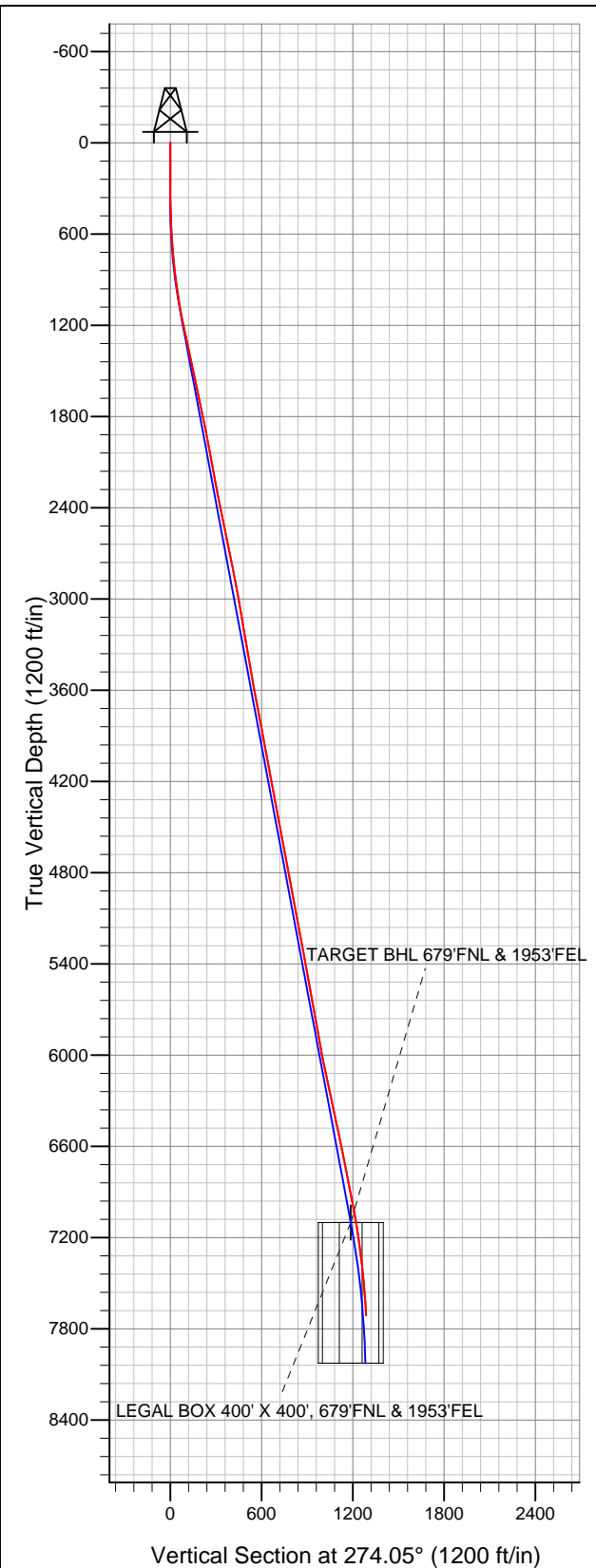


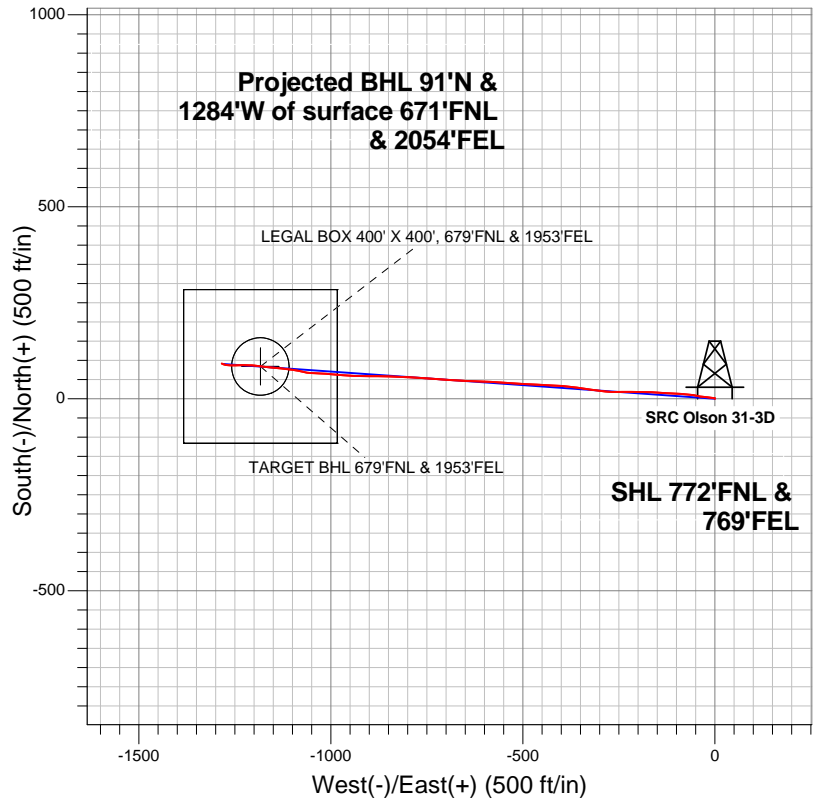
# Well Name: SRC Olson 31-3D

Surface Location: SRC Olson 41-3 Pad Sec.3-T3N-R68W  
North American Datum 1983 US State Plane 1983Colorado Northern Zone  
Ground Elevation: 5041.0

+N/-S	+E/-W	Northing	Easting	Latitude	Longitude	Slot
0.0	0.0	1338168.73	3144390.22	40.260516	-104.982624	
Original Well Elev			WELL @ 5054.0ft (Original Well Elev)			



## Synergy Resources



### LEGEND

- Wellbore #1
- SRC Olson 31-3D, Wellbore #1, Plan #2 (7-13-12) V0
- Survey #1

## Final Survey Plot

Projected Final Survey -  
7829'MD & 7710'TVD @ 1288'VS  
3.40 deg Inc 291.80 deg AZ

Project: SEC.3-T3N-R68W  
Site: SRC Olson 41-3 Pad Sec.3-T3N-R68W  
Well: SRC Olson 31-3D  
Plan: Wellbore #1



## **Synergy Resources**

**SEC.3-T3N-R68W**

**SRC Olson 41-3 Pad Sec.3-T3N-R68W**

**SRC Olson 31-3D**

**Wellbore #1**

**Survey: Survey #1**

## **Standard Survey Report**

**07 September, 2012**

<b>Company:</b>	Synergy Resources	<b>Local Co-ordinate Reference:</b>	Well SRC Olson 31-3D
<b>Project:</b>	SEC.3-T3N-R68W	<b>TVD Reference:</b>	WELL @ 5054.0ft (Original Well Elev)
<b>Site:</b>	SRC Olson 41-3 Pad Sec.3-T3N-R68W	<b>MD Reference:</b>	WELL @ 5054.0ft (Original Well Elev)
<b>Well:</b>	SRC Olson 31-3D	<b>North Reference:</b>	True
<b>Wellbore:</b>	Wellbore #1	<b>Survey Calculation Method:</b>	Minimum Curvature
<b>Design:</b>	Wellbore #1	<b>Database:</b>	Landmark

<b>Project</b>	SEC.3-T3N-R68W, Weld County, CO		
<b>Map System:</b>	US State Plane 1983	<b>System Datum:</b>	Mean Sea Level
<b>Geo Datum:</b>	North American Datum 1983		Using Well Reference Point
<b>Map Zone:</b>	Colorado Northern Zone		Using geodetic scale factor

<b>Site</b>	SRC Olson 41-3 Pad Sec.3-T3N-R68W				
<b>Site Position:</b>		<b>Northing:</b>	1,338,180.83 ft	<b>Latitude:</b>	40.260549 °
<b>From:</b>	Lat/Long	<b>Easting:</b>	3,144,398.81 ft	<b>Longitude:</b>	-104.982593 °
<b>Position Uncertainty:</b>	0.0 ft	<b>Slot Radius:</b>	"	<b>Grid Convergence:</b>	0.33 °

Well	SRC Olson 31-3D					
Well Position	+N/-S	0.0 ft	Northing:	1,338,168.73 ft	Latitude:	40.260516
	+E/-W	0.0 ft	Easting:	3,144,390.22 ft	Longitude:	-104.982624
Position Uncertainty		0.0 ft	Wellhead Elevation:	ft	Ground Level:	5,041.0 ft

Wellbore #1					
Magnetics	Model Name	Sample Date	Declination (°)	Dip Angle (°)	Field Strength (nT)
	IGRF2010	7/23/2012	8.82	66.86	52,916

Design	Wellbore #1			
Audit Notes:				
Version:	1.0	Phase:	ACTUAL	Tie On Depth: 0.0
Vertical Section:	Depth From (TVD) (ft)	+N/-S (ft)	+E/-W (ft)	Direction (°)
	0.0	0.0	0.0	274.05

Survey Program		Date	9/7/2012		
From (ft)	To (ft)	Survey (Wellbore)	Tool Name	Description	
20.0	7,829.0	Survey #1 (Wellbore #1)	MWD	MWD - Standard	

Survey	Survey Data									
	Measured Depth (ft)	Inclination (°)	Azimuth (°)	Vertical Depth (ft)	+N/-S (ft)	+E/-W (ft)	Vertical Section (ft)	Dogleg Rate (°/100ft)	Build Rate (°/100ft)	Turn Rate (°/100ft)
	0.0	0.00	0.00	0.0	0.0	0.0	0.0	0.00	0.00	0.00
	20.0	0.40	355.10	20.0	0.1	0.0	0.0	2.00	2.00	0.00
	108.0	0.30	4.30	108.0	0.6	0.0	0.1	0.13	-0.11	10.45
	241.0	0.10	19.20	241.0	1.1	0.0	0.0	0.15	-0.15	11.20
	356.0	0.40	299.40	356.0	1.4	-0.3	0.4	0.34	0.26	-69.39
	483.0	2.20	273.40	483.0	1.7	-3.1	3.2	1.46	1.42	-20.47
	610.0	3.40	280.40	609.8	2.5	-9.2	9.4	0.98	0.94	5.51
	737.0	4.90	274.60	736.5	3.7	-18.3	18.5	1.22	1.18	-4.57
	864.0	6.90	279.20	862.8	5.3	-31.3	31.6	1.62	1.57	3.62
	992.0	9.00	279.20	989.6	8.1	-48.7	49.2	1.64	1.64	0.00
	1,041.0	9.00	279.20	1,038.0	9.4	-56.3	56.8	0.00	0.00	0.00
	1,071.0	9.60	278.80	1,067.6	10.1	-61.1	61.7	2.01	2.00	-1.33
	1,199.0	12.00	271.80	1,193.3	12.2	-85.0	85.6	2.13	1.88	-5.47

<b>Company:</b>	Synergy Resources	<b>Local Co-ordinate Reference:</b>	Well SRC Olson 31-3D
<b>Project:</b>	SEC.3-T3N-R68W	<b>TVD Reference:</b>	WELL @ 5054.0ft (Original Well Elev)
<b>Site:</b>	SRC Olson 41-3 Pad Sec.3-T3N-R68W	<b>MD Reference:</b>	WELL @ 5054.0ft (Original Well Elev)
<b>Well:</b>	SRC Olson 31-3D	<b>North Reference:</b>	True
<b>Wellbore:</b>	Wellbore #1	<b>Survey Calculation Method:</b>	Minimum Curvature
<b>Design:</b>	Wellbore #1	<b>Database:</b>	Landmark

Survey										
Measured Depth (ft)	Inclination (°)	Azimuth (°)	Vertical Depth (ft)	+N/-S (ft)	+E/-W (ft)	Vertical Section (ft)	Dogleg Rate (°/100ft)	Build Rate (°/100ft)	Turn Rate (°/100ft)	
1,328.0	12.20	273.90	1,319.4	13.5	-112.0	112.6	0.37	0.16	1.63	
1,456.0	12.20	274.30	1,444.5	15.5	-138.9	139.7	0.07	0.00	0.31	
1,584.0	11.30	271.60	1,569.8	16.8	-165.0	165.7	0.82	-0.70	-2.11	
1,712.0	12.30	271.80	1,695.1	17.6	-191.1	191.9	0.78	0.78	0.16	
1,840.0	11.60	270.00	1,820.4	18.0	-217.6	218.4	0.62	-0.55	-1.41	
1,968.0	11.00	270.20	1,945.9	18.1	-242.7	243.4	0.47	-0.47	0.16	
2,096.0	10.60	268.50	2,071.6	17.8	-266.7	267.3	0.40	-0.31	-1.33	
2,225.0	10.60	277.20	2,198.4	19.0	-290.3	290.9	1.24	0.00	6.74	
2,353.0	11.10	280.40	2,324.1	22.7	-314.1	314.9	0.61	0.39	2.50	
2,481.0	11.40	276.90	2,449.7	26.4	-338.8	339.8	0.58	0.23	-2.73	
2,612.0	11.80	276.90	2,578.0	29.6	-364.9	366.1	0.31	0.31	0.00	
2,741.0	11.50	275.00	2,704.3	32.3	-390.9	392.2	0.38	-0.23	-1.47	
2,869.0	11.30	273.90	2,829.8	34.3	-416.1	417.5	0.23	-0.16	-0.86	
2,997.0	10.00	273.00	2,955.6	35.7	-439.7	441.1	1.02	-1.02	-0.70	
3,126.0	9.80	272.00	3,082.7	36.7	-461.8	463.3	0.20	-0.16	-0.78	
3,253.0	9.50	272.70	3,207.9	37.5	-483.1	484.6	0.25	-0.24	0.55	
3,382.0	9.70	273.40	3,335.1	38.7	-504.6	506.1	0.18	0.16	0.54	
3,510.0	9.80	275.50	3,461.2	40.4	-526.2	527.7	0.29	0.08	1.64	
3,639.0	10.60	272.90	3,588.2	42.0	-549.0	550.6	0.72	0.62	-2.02	
3,767.0	10.90	272.90	3,714.0	43.2	-572.8	574.4	0.23	0.23	0.00	
3,895.0	10.90	272.90	3,839.6	44.5	-597.0	598.6	0.00	0.00	0.00	
4,023.0	10.90	272.00	3,965.3	45.5	-621.2	622.8	0.13	0.00	-0.70	
4,151.0	10.00	271.60	4,091.2	46.2	-644.4	646.0	0.71	-0.70	-0.31	
4,280.0	10.20	274.10	4,218.2	47.3	-667.0	668.6	0.37	0.16	1.94	
4,408.0	10.60	273.00	4,344.1	48.8	-690.0	691.8	0.35	0.31	-0.86	
4,537.0	10.50	274.60	4,470.9	50.3	-713.6	715.4	0.24	-0.08	1.24	
4,662.0	10.50	273.70	4,593.8	52.0	-736.3	738.1	0.13	0.00	-0.72	
4,791.0	11.00	274.40	4,720.6	53.7	-760.3	762.2	0.40	0.39	0.54	
4,919.0	11.30	273.40	4,846.2	55.4	-785.0	787.0	0.28	0.23	-0.78	
5,048.0	10.40	270.90	4,972.8	56.3	-809.3	811.2	0.79	-0.70	-1.94	
5,176.0	10.20	273.70	5,098.8	57.2	-832.1	834.1	0.42	-0.16	2.19	
5,304.0	10.70	271.80	5,224.7	58.3	-855.3	857.3	0.47	0.39	-1.48	
5,432.0	10.00	269.00	5,350.6	58.5	-878.3	880.2	0.67	-0.55	-2.19	
5,560.0	10.60	270.60	5,476.5	58.4	-901.2	903.1	0.52	0.47	1.25	
5,689.0	10.30	271.80	5,603.4	58.9	-924.6	926.4	0.29	-0.23	0.93	
5,817.0	9.90	275.00	5,729.4	60.2	-947.0	948.9	0.54	-0.31	2.50	
5,946.0	10.60	271.40	5,856.3	61.5	-969.9	971.8	0.74	0.54	-2.79	
6,074.0	10.60	277.40	5,982.2	63.3	-993.3	995.3	0.86	0.00	4.69	
6,202.0	12.00	272.90	6,107.7	65.5	-1,018.3	1,020.4	1.29	1.09	-3.52	
6,331.0	11.80	271.40	6,233.9	66.5	-1,044.9	1,047.0	0.29	-0.16	-1.16	
6,459.0	12.70	283.40	6,359.0	70.1	-1,071.7	1,073.9	2.11	0.70	9.38	
6,587.0	12.00	278.50	6,484.0	75.3	-1,098.5	1,101.1	0.98	-0.55	-3.83	
6,715.0	11.40	276.20	6,609.4	78.6	-1,124.2	1,127.0	0.59	-0.47	-1.80	
6,843.0	11.20	273.60	6,734.9	80.8	-1,149.2	1,152.1	0.43	-0.16	-2.03	
6,972.0	10.70	278.50	6,861.6	83.3	-1,173.6	1,176.5	0.82	-0.39	3.80	
7,100.0	11.50	275.00	6,987.2	86.2	-1,198.0	1,201.1	0.82	0.63	-2.73	
7,208.5	9.48	272.09	7,093.8	87.5	-1,217.7	1,220.9	1.93	-1.86	-2.68	
TARGET BHL 679'FNL & 1953'FEL										
7,209.0	9.47	272.08	7,094.3	87.5	-1,217.8	1,221.0	1.93	-1.85	-3.25	
LEGAL BOX 400' X 400', 679'FNL & 1953'FEL										
7,209.1	9.47	272.07	7,094.4	87.5	-1,217.8	1,221.0	1.93	-1.85	-3.25	
TARGET CIRCLE 679'FNL & 1953'FEL										
7,229.0	9.10	271.40	7,114.1	87.6	-1,221.1	1,224.2	1.93	-1.85	-3.38	
7,357.0	7.90	266.50	7,240.7	87.3	-1,240.0	1,243.0	1.09	-0.94	-3.83	

<b>Company:</b>	Synergy Resources	<b>Local Co-ordinate Reference:</b>	Well SRC Olson 31-3D
<b>Project:</b>	SEC.3-T3N-R68W	<b>TVD Reference:</b>	WELL @ 5054.0ft (Original Well Elev)
<b>Site:</b>	SRC Olson 41-3 Pad Sec.3-T3N-R68W	<b>MD Reference:</b>	WELL @ 5054.0ft (Original Well Elev)
<b>Well:</b>	SRC Olson 31-3D	<b>North Reference:</b>	True
<b>Wellbore:</b>	Wellbore #1	<b>Survey Calculation Method:</b>	Minimum Curvature
<b>Design:</b>	Wellbore #1	<b>Database:</b>	Landmark

Survey									
Measured Depth (ft)	Inclination (°)	Azimuth (°)	Vertical Depth (ft)	+N/-S (ft)	+E/-W (ft)	Vertical Section (ft)	Dogleg Rate (°/100ft)	Build Rate (°/100ft)	Turn Rate (°/100ft)
7,485.0	6.30	269.50	7,367.7	86.7	-1,255.8	1,258.7	1.28	-1.25	2.34
7,613.0	5.50	277.80	7,495.0	87.5	-1,268.9	1,271.9	0.91	-0.63	6.48
7,785.0	3.40	291.80	7,666.5	90.5	-1,281.8	1,284.9	1.37	-1.22	8.14
7,829.0	3.40	291.80	7,710.4	91.4	-1,284.2	1,287.4	0.00	0.00	0.00

Checked By: _____	Approved By: _____	Date: _____
-------------------	--------------------	-------------