

# Well Name: SRC Avex 32-10D

Surface Location: SRC Avex 42-10D Pad Sec.10-T4N-R68W  
 North American Datum 1983 US State Plane 1983 Colorado Northern Zone  
 Ground Elevation: 5038.0  
 Northing 1363965.53 Easting 3143566.42 Latitude 40.331342 Longitude -104.985039 Slot  
 Original Well Elev WELL @ 5051.0ft (Original Well Elev)

+N/-S 0.0  
 +E/-W 0.0

Northing 1363965.53

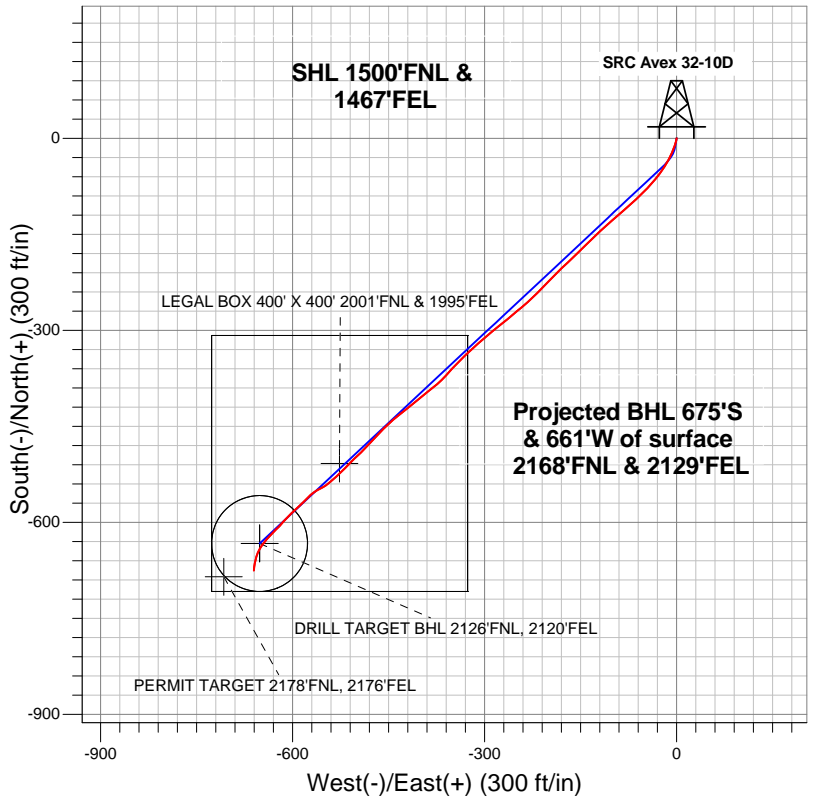
Easting 3143566.42

Latitude 40.331342

Longitude -104.985039

Slot

## Synergy Resources



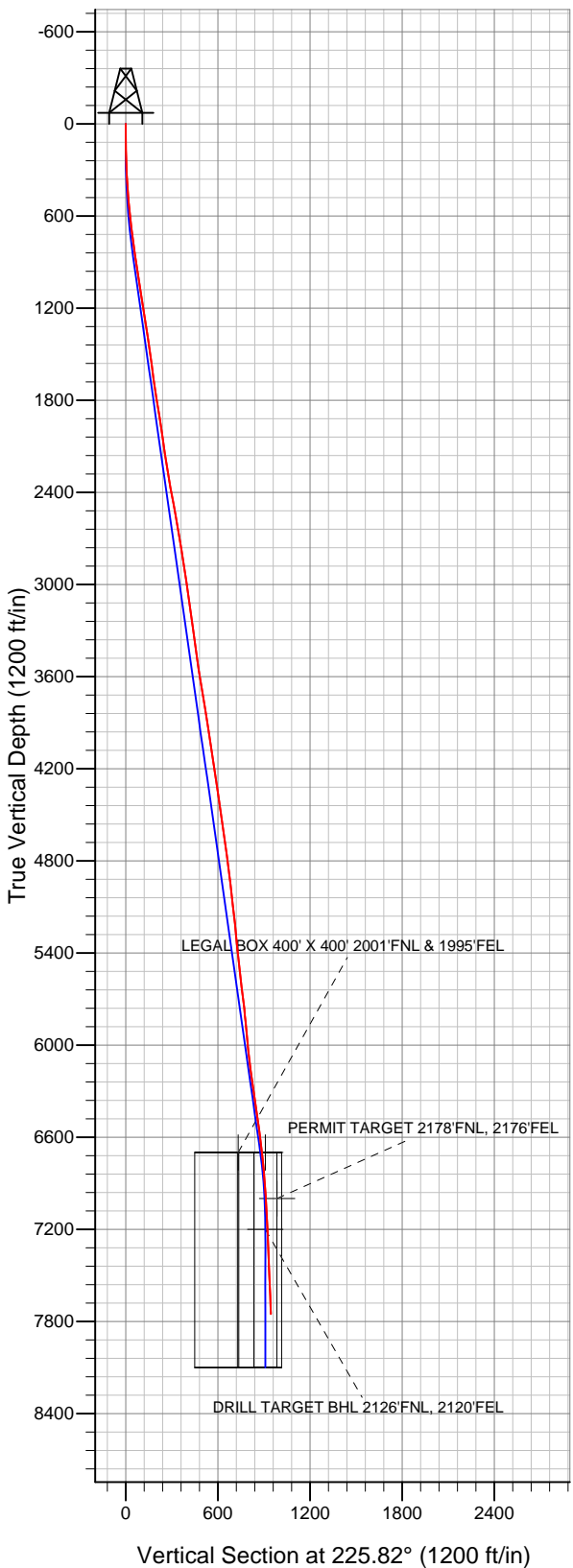
### LEGEND

- ◆ SRC Avex 32-10D, Wellbore #1, Plan #2 (10-02-12) R V0
- Wellbore #1
- Survey #1

## Final Survey Plot

**Projected Final Survey -**  
**7816'MD & 7751'TVD @ 944'VS**  
**2.70 deg Inc 187.60 deg AZ**

Project: SEC.10-T4N-R68W  
 Site: SRC Avex 42-10D Pad Sec.10-T4N-R68W  
 Well: SRC Avex 32-10D  
 Plan: Wellbore #1





## **Synergy Resources**

**SEC.10-T4N-R68W**

**SRC Avex 42-10D Pad Sec.10-T4N-R68W**

**SRC Avex 32-10D**

**Wellbore #1**

**Survey: Survey #1**

## **Standard Survey Report**

**09 October, 2012**



<b>Company:</b>	Synergy Resources	<b>Local Co-ordinate Reference:</b>	Well SRC Avex 32-10D
<b>Project:</b>	SEC.10-T4N-R68W	<b>TVD Reference:</b>	WELL @ 5051.0ft (Original Well Elev)
<b>Site:</b>	SRC Avex 42-10D Pad Sec.10-T4N-R68W	<b>MD Reference:</b>	WELL @ 5051.0ft (Original Well Elev)
<b>Well:</b>	SRC Avex 32-10D	<b>North Reference:</b>	True
<b>Wellbore:</b>	Wellbore #1	<b>Survey Calculation Method:</b>	Minimum Curvature
<b>Design:</b>	Wellbore #1	<b>Database:</b>	Landmark

### Survey

Measured Depth (ft)	Inclination (°)	Azimuth (°)	Vertical Depth (ft)	+N/-S (ft)	+E/-W (ft)	Vertical Section (ft)	Dogleg Rate (°/100ft)	Build Rate (°/100ft)	Turn Rate (°/100ft)
1,412.0	7.90	229.10	1,402.2	-116.4	-86.8	143.4	0.31	-0.31	-0.23
1,540.0	8.30	229.10	1,529.0	-128.2	-100.5	161.4	0.31	0.31	0.00
1,668.0	8.60	228.40	1,655.6	-140.6	-114.6	180.2	0.25	0.23	-0.55
1,797.0	8.70	225.70	1,783.1	-153.8	-128.8	199.6	0.32	0.08	-2.09
1,925.0	8.90	225.00	1,909.6	-167.6	-142.7	219.2	0.18	0.16	-0.55
2,053.0	8.30	225.40	2,036.2	-181.1	-156.3	238.3	0.47	-0.47	0.31
2,181.0	8.40	226.80	2,162.8	-194.0	-169.7	256.9	0.18	0.08	1.09
2,310.0	9.70	226.30	2,290.2	-207.9	-184.4	277.2	1.01	1.01	-0.39
2,438.0	10.90	224.30	2,416.1	-224.0	-200.7	300.1	0.98	0.94	-1.56
2,566.0	9.80	223.60	2,542.1	-240.6	-216.6	323.0	0.86	-0.86	-0.55
2,694.0	9.60	229.40	2,668.2	-255.4	-232.3	344.6	0.78	-0.16	4.53
2,823.0	9.30	229.60	2,795.5	-269.2	-248.4	365.7	0.23	-0.23	0.16
2,951.0	8.60	229.40	2,921.9	-282.1	-263.5	385.6	0.55	-0.55	-0.16
3,079.0	8.10	233.10	3,048.6	-293.8	-278.0	404.1	0.57	-0.39	2.89
3,207.0	7.90	228.20	3,175.3	-305.0	-291.8	421.8	0.56	-0.16	-3.83
3,336.0	7.70	229.80	3,303.1	-316.5	-305.0	439.3	0.23	-0.16	1.24
3,464.0	7.80	230.10	3,430.0	-327.6	-318.2	456.5	0.08	0.08	0.23
3,592.0	9.10	224.00	3,556.6	-340.5	-331.9	475.3	1.23	1.02	-4.77
3,720.0	9.40	223.10	3,682.9	-355.4	-346.0	495.9	0.26	0.23	-0.70
3,849.0	9.10	222.60	3,810.2	-370.6	-360.1	516.6	0.24	-0.23	-0.39
3,977.0	8.40	229.80	3,936.7	-384.1	-374.1	536.0	1.01	-0.55	5.63
4,105.0	8.80	232.40	4,063.3	-396.1	-389.0	555.0	0.44	0.31	2.03
4,233.0	8.90	228.50	4,189.8	-408.6	-404.2	574.7	0.48	0.08	-3.05
4,362.0	8.50	232.90	4,317.3	-421.0	-419.3	594.1	0.60	-0.31	3.41
4,490.0	8.40	230.30	4,443.9	-432.7	-434.0	612.8	0.31	-0.08	-2.03
4,618.0	8.50	227.30	4,570.5	-445.1	-448.2	631.6	0.35	0.08	-2.34
4,747.0	7.50	227.00	4,698.3	-457.3	-461.3	649.5	0.78	-0.78	-0.23
4,875.0	6.90	220.80	4,825.2	-468.8	-472.5	665.5	0.77	-0.47	-4.84
5,003.0	7.00	222.00	4,952.3	-480.4	-482.7	681.0	0.14	0.08	0.94
5,132.0	6.30	228.20	5,080.4	-491.0	-493.3	695.9	0.78	-0.54	4.81
5,260.0	6.20	225.90	5,207.7	-500.5	-503.5	709.8	0.21	-0.08	-1.80
5,389.0	5.20	224.80	5,336.0	-509.4	-512.6	722.6	0.78	-0.78	-0.85
5,517.0	6.50	221.90	5,463.4	-519.0	-521.5	735.7	1.04	1.02	-2.27
5,645.0	6.90	231.70	5,590.5	-529.1	-532.4	750.5	0.94	0.31	7.66
5,774.0	6.90	227.70	5,718.6	-539.1	-544.2	766.0	0.37	0.00	-3.10
5,902.0	5.80	245.10	5,845.8	-547.0	-555.7	779.8	1.72	-0.86	13.59
6,031.0	5.40	235.60	5,974.2	-553.2	-566.7	791.9	0.78	-0.31	-7.36
6,159.0	6.90	223.60	6,101.4	-562.2	-576.9	805.5	1.54	1.17	-9.38
6,287.0	8.10	227.50	6,228.3	-573.8	-588.9	822.2	1.02	0.94	3.05
6,416.0	8.00	226.80	6,356.1	-586.1	-602.1	840.3	0.11	-0.08	-0.54
6,544.0	8.40	221.00	6,482.8	-599.3	-614.8	858.5	0.72	0.31	-4.53
6,673.0	6.90	224.70	6,610.6	-611.9	-626.4	875.7	1.22	-1.16	2.87
6,745.3	6.39	223.11	6,682.5	-617.9	-632.2	884.0	0.75	-0.71	-2.20
<b>LEGAL BOX 400' X 400' 2001'FNL &amp; 1995'FEL</b>									
6,765.5	6.25	222.62	6,702.5	-619.5	-633.7	886.2	0.75	-0.70	-2.43
<b>TARGET CIRCLE 2126'FNL &amp; 2120'FEL</b>									
6,801.0	6.00	221.70	6,737.8	-622.4	-636.2	890.0	0.75	-0.70	-2.59
6,929.0	4.70	221.70	6,865.2	-631.3	-644.2	901.9	1.02	-1.02	0.00
7,058.0	3.70	210.30	6,993.9	-638.8	-649.8	911.2	1.01	-0.78	-8.84
7,068.2	3.66	209.99	7,004.1	-639.4	-650.1	911.8	0.44	-0.40	-3.00
<b>PERMIT TARGET 2178'FNL, 2176'FEL</b>									
7,186.0	3.20	205.90	7,121.7	-645.6	-653.4	918.5	0.44	-0.39	-3.48
7,263.6	2.95	200.78	7,199.1	-649.4	-655.1	922.4	0.48	-0.32	-6.60
<b>DRILL TARGET BHL 2126'FNL, 2120'FEL</b>									

<b>Company:</b>	Synergy Resources	<b>Local Co-ordinate Reference:</b>	Well SRC Avex 32-10D
<b>Project:</b>	SEC.10-T4N-R68W	<b>TVD Reference:</b>	WELL @ 5051.0ft (Original Well Elev)
<b>Site:</b>	SRC Avex 42-10D Pad Sec.10-T4N-R68W	<b>MD Reference:</b>	WELL @ 5051.0ft (Original Well Elev)
<b>Well:</b>	SRC Avex 32-10D	<b>North Reference:</b>	True
<b>Wellbore:</b>	Wellbore #1	<b>Survey Calculation Method:</b>	Minimum Curvature
<b>Design:</b>	Wellbore #1	<b>Database:</b>	Landmark

Survey										
Measured Depth (ft)	Inclination (°)	Azimuth (°)	Vertical Depth (ft)	+N/-S (ft)	+E/-W (ft)	Vertical Section (ft)	Dogleg Rate (°/100ft)	Build Rate (°/100ft)	Turn Rate (°/100ft)	
7,315.0	2.80	196.90	7,250.5	-651.8	-655.9	924.7	0.48	-0.29	-7.54	
7,443.0	2.60	195.50	7,378.3	-657.6	-657.6	929.9	0.16	-0.16	-1.09	
7,571.0	2.90	191.30	7,506.2	-663.6	-659.0	935.1	0.28	0.23	-3.28	
7,700.0	2.70	186.00	7,635.0	-669.8	-660.0	940.1	0.25	-0.16	-4.11	
7,771.0	2.70	187.60	7,706.0	-673.1	-660.4	942.7	0.11	0.00	2.25	
7,816.0	2.70	187.60	7,750.9	-675.2	-660.7	944.4	0.00	0.00	0.00	

Wellbore Targets									
Target Name	Dip Angle	Dip Dir.	TVD	+N/-S	+E/-W	Northing	Easting	Latitude	Longitude
- hit/miss target	(°)	(°)	(ft)	(ft)	(ft)	(ft)	(ft)		
- Shape									
TARGET CIRCLE 212	0.00	0.00	6,700.0	-633.2	-651.6	1,363,328.59	3,142,918.53	40.329604	-104.987376
- survey misses target center by 22.6ft at 6765.4ft MD (6702.5 TVD, -619.5 N, -633.7 E)									
- Circle (radius 75.0)									
LEGAL BOX 400' X 400'	0.00	0.00	6,700.0	-508.2	-526.6	1,363,454.31	3,143,042.80	40.329947	-104.986928
- survey misses target center by 153.3ft at 6746.0ft MD (6683.1 TVD, -618.0 N, -632.2 E)									
- Rectangle (sides W400.0 H400.0 D1,400.0)									
PERMIT TARGET 211	0.00	0.00	7,000.0	-685.2	-707.6	1,363,276.23	3,142,862.81	40.329461	-104.987577
- survey misses target center by 73.7ft at 7068.2ft MD (7004.1 TVD, -639.4 N, -650.1 E)									
- Point									
DRILL TARGET BHL	0.00	0.00	7,200.0	-633.2	-651.6	1,363,328.59	3,142,918.53	40.329604	-104.987376
- survey misses target center by 16.6ft at 7263.6ft MD (7199.2 TVD, -649.4 N, -655.1 E)									
- Point									

Checked By: _____	Approved By: _____	Date: _____
-------------------	--------------------	-------------