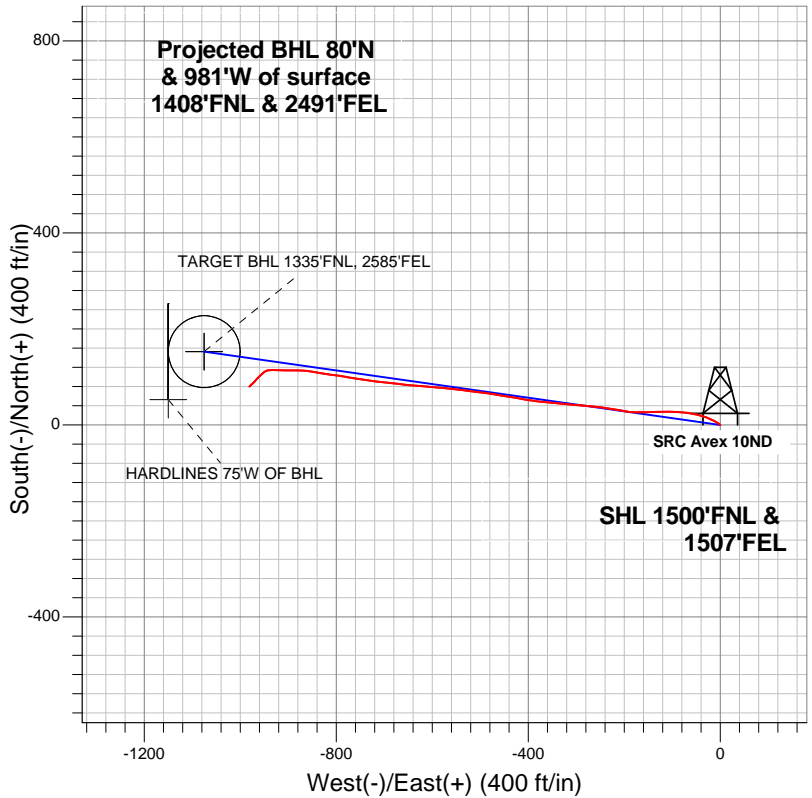


## Synergy Resources



### LEGEND

- △ SRC Avex 10ND, Wellbore #1, Plan #1 (10-15-12)R V0
- Wellbore #1
- Survey #1

## Final Survey Plot

**Projected Final Survey -**  
**7840'MD & 7763'TVD @ 982'VS**  
**2.10 deg Inc 227.80 deg AZ**

Project: SEC.10-T4N-R68W  
 Site: SRC Avex 42-10D Pad Sec.10-T4N-R68W  
 Well: SRC Avex 10ND  
 Plan: Wellbore #1



## **Directional**

### **Synergy Resources**

**SEC.10-T4N-R68W**

**SRC Avex 42-10D Pad Sec.10-T4N-R68W**

**SRC Avex 10ND**

**Wellbore #1**

**Survey: Survey #1**

### **Standard Survey Report**

**23 October, 2012**

<b>Company:</b>	Synergy Resources	<b>Local Co-ordinate Reference:</b>	Well SRC Avex 10ND
<b>Project:</b>	SEC.10-T4N-R68W	<b>TVD Reference:</b>	WELL @ 5050.0ft (Original Well Elev)
<b>Site:</b>	SRC Avex 42-10D Pad Sec.10-T4N-R68W	<b>MD Reference:</b>	WELL @ 5050.0ft (Original Well Elev)
<b>Well:</b>	SRC Avex 10ND	<b>North Reference:</b>	True
<b>Wellbore:</b>	Wellbore #1	<b>Survey Calculation Method:</b>	Minimum Curvature
<b>Design:</b>	Wellbore #1	<b>Database:</b>	Landmark

<b>Project</b>	SEC.10-T4N-R68W, Weld County, Colorado		
<b>Map System:</b>	US State Plane 1983	<b>System Datum:</b>	Mean Sea Level
<b>Geo Datum:</b>	North American Datum 1983		Using Well Reference Point
<b>Map Zone:</b>	Colorado Northern Zone		Using geodetic scale factor

<b>Site</b>	SRC Avex 42-10D Pad Sec.10-T4N-R68W		
<b>Site Position:</b>		<b>Northing:</b>	1,363,966.99 ft
<b>From:</b>	Lat/Long	<b>Easting:</b>	3,143,626.35 ft
<b>Position Uncertainty:</b>	0.0 ft	<b>Slot Radius:</b>	"
		<b>Latitude:</b>	40.331345
		<b>Longitude:</b>	-104.984824
		<b>Grid Convergence:</b>	0.33 °

<b>Well</b>	SRC Avex 10ND		
<b>Well Position</b>	<b>+N/-S</b>	0.0 ft	<b>Northing:</b> 1,363,965.29 ft
	<b>+E/-W</b>	0.0 ft	<b>Easting:</b> 3,143,526.27 ft
<b>Position Uncertainty</b>	0.0 ft	<b>Wellhead Elevation:</b>	ft
		<b>Latitude:</b>	40.331342
		<b>Longitude:</b>	-104.985183
		<b>Ground Level:</b>	5,037.0 ft

<b>Wellbore</b>	Wellbore #1				
<b>Magnetics</b>	<b>Model Name</b>	<b>Sample Date</b>	<b>Declination (°)</b>	<b>Dip Angle (°)</b>	<b>Field Strength (nT)</b>
	IGRF2010	10/15/2012	8.80	66.91	52,929

<b>Design</b>	Wellbore #1				
<b>Audit Notes:</b>					
<b>Version:</b>	1.0	<b>Phase:</b>	ACTUAL	<b>Tie On Depth:</b>	0.0
<b>Vertical Section:</b>	<b>Depth From (TVD) (ft)</b>	<b>+N/-S (ft)</b>	<b>+E/-W (ft)</b>	<b>Direction (°)</b>	
	0.0	0.0	0.0	278.08	

<b>Survey Program</b>	<b>Date</b>	10/23/2012			
<b>From (ft)</b>	<b>To (ft)</b>	<b>Survey (Wellbore)</b>	<b>Tool Name</b>	<b>Description</b>	
48.0	7,840.0	Survey #1 (Wellbore #1)	MWD	MWD - Standard	

<b>Survey</b>										
<b>Measured Depth (ft)</b>	<b>Inclination (°)</b>	<b>Azimuth (°)</b>	<b>Vertical Depth (ft)</b>	<b>+N/-S (ft)</b>	<b>+E/-W (ft)</b>	<b>Vertical Section (ft)</b>	<b>Dogleg Rate (°/100ft)</b>	<b>Build Rate (°/100ft)</b>	<b>Turn Rate (°/100ft)</b>	
0.0	0.00	0.00	0.0	0.0	0.0	0.0	0.00	0.00	0.00	
48.0	0.30	9.20	48.0	0.1	0.0	0.0	0.63	0.63	0.00	
139.0	1.10	307.90	139.0	0.9	-0.6	0.8	1.09	0.88	-67.36	
230.0	1.40	309.90	230.0	2.1	-2.2	2.5	0.33	0.33	2.20	
317.0	1.10	288.80	317.0	3.1	-3.8	4.2	0.63	-0.34	-24.25	
434.0	1.10	305.40	433.9	4.1	-5.8	6.3	0.27	0.00	14.19	
569.0	1.10	296.90	568.9	5.4	-8.0	8.7	0.12	0.00	-6.30	
642.0	1.30	302.50	641.9	6.2	-9.3	10.1	0.32	0.27	7.67	
768.0	2.50	303.40	767.8	8.5	-12.8	13.9	0.95	0.95	0.71	
897.0	3.80	295.00	896.6	11.8	-19.0	20.5	1.07	1.01	-6.51	
1,025.0	4.80	290.90	1,024.3	15.5	-27.9	29.8	0.82	0.78	-3.20	
1,153.0	5.40	284.30	1,151.8	18.9	-38.7	41.0	0.65	0.47	-5.16	
1,281.0	6.10	281.30	1,279.1	21.8	-51.2	53.8	0.59	0.55	-2.34	

<b>Company:</b>	Synergy Resources	<b>Local Co-ordinate Reference:</b>	Well SRC Avex 10ND
<b>Project:</b>	SEC.10-T4N-R68W	<b>TVD Reference:</b>	WELL @ 5050.0ft (Original Well Elev)
<b>Site:</b>	SRC Avex 42-10D Pad Sec.10-T4N-R68W	<b>MD Reference:</b>	WELL @ 5050.0ft (Original Well Elev)
<b>Well:</b>	SRC Avex 10ND	<b>North Reference:</b>	True
<b>Wellbore:</b>	Wellbore #1	<b>Survey Calculation Method:</b>	Minimum Curvature
<b>Design:</b>	Wellbore #1	<b>Database:</b>	Landmark

Survey										
Measured Depth (ft)	Inclination (°)	Azimuth (°)	Vertical Depth (ft)	+N/-S (ft)	+E/-W (ft)	Vertical Section (ft)	Dogleg Rate (°/100ft)	Build Rate (°/100ft)	Turn Rate (°/100ft)	
1,410.0	6.90	279.90	1,407.3	24.4	-65.6	68.3	0.63	0.62	-1.09	
1,538.0	7.90	275.60	1,534.2	26.6	-81.9	84.8	0.89	0.78	-3.36	
1,666.0	8.00	270.40	1,661.0	27.5	-99.6	102.4	0.57	0.08	-4.06	
1,794.0	8.40	270.50	1,787.7	27.7	-117.8	120.5	0.31	0.31	0.08	
1,923.0	8.80	265.60	1,915.2	27.0	-137.1	139.5	0.65	0.31	-3.80	
2,051.0	8.70	270.40	2,041.7	26.3	-156.5	158.7	0.58	-0.08	3.75	
2,179.0	8.90	270.20	2,168.2	26.4	-176.1	178.1	0.16	0.16	-0.16	
2,307.0	10.20	280.60	2,294.5	28.5	-197.1	199.2	1.68	1.02	8.13	
2,436.0	11.70	279.20	2,421.1	32.7	-221.3	223.7	1.18	1.16	-1.09	
2,564.0	10.40	277.10	2,546.7	36.2	-245.6	248.2	1.06	-1.02	-1.64	
2,693.0	10.20	274.90	2,673.7	38.7	-268.5	271.3	0.34	-0.16	-1.71	
2,821.0	10.60	275.50	2,799.6	40.8	-291.5	294.3	0.32	0.31	0.47	
2,950.0	10.10	274.10	2,926.5	42.7	-314.6	317.5	0.43	-0.39	-1.09	
3,078.0	9.80	277.10	3,052.5	44.9	-336.6	339.6	0.47	-0.23	2.34	
3,206.0	9.70	275.60	3,178.7	47.2	-358.1	361.2	0.21	-0.08	-1.17	
3,334.0	9.70	274.10	3,304.9	49.1	-379.6	382.8	0.20	0.00	-1.17	
3,463.0	9.80	281.40	3,432.0	52.0	-401.2	404.6	0.96	0.08	5.66	
3,591.0	11.90	279.30	3,557.7	56.3	-424.9	428.6	1.67	1.64	-1.64	
3,719.0	11.90	279.50	3,682.9	60.6	-451.0	455.0	0.03	0.00	0.16	
3,847.0	11.30	279.00	3,808.3	64.8	-476.4	480.8	0.48	-0.47	-0.39	
3,976.0	9.50	275.80	3,935.2	67.8	-499.5	504.0	1.46	-1.40	-2.48	
4,104.0	9.80	277.80	4,061.4	70.4	-520.8	525.5	0.35	0.23	1.56	
4,232.0	10.60	276.50	4,187.4	73.2	-543.2	548.1	0.65	0.63	-1.02	
4,360.0	9.20	276.70	4,313.5	75.7	-565.1	570.1	1.09	-1.09	0.16	
4,489.0	9.50	275.50	4,440.8	77.9	-585.9	591.1	0.28	0.23	-0.93	
4,617.0	9.90	273.00	4,566.9	79.5	-607.4	612.6	0.45	0.31	-1.95	
4,745.0	9.80	275.80	4,693.0	81.2	-629.3	634.4	0.38	-0.08	2.19	
4,874.0	9.50	275.50	4,820.2	83.3	-650.8	656.0	0.24	-0.23	-0.23	
5,002.0	9.70	276.50	4,946.4	85.5	-672.0	677.4	0.20	0.16	0.78	
5,131.0	9.70	276.20	5,073.6	87.9	-693.6	699.1	0.04	0.00	-0.23	
5,259.0	9.60	276.00	5,199.8	90.2	-715.0	720.5	0.08	-0.08	-0.16	
5,387.0	8.60	281.60	5,326.2	93.3	-734.9	740.8	1.04	-0.78	4.38	
5,516.0	8.40	275.10	5,453.7	96.0	-753.8	759.8	0.76	-0.16	-5.04	
5,644.0	9.10	281.80	5,580.3	98.9	-773.0	779.2	0.97	0.55	5.23	
5,773.0	8.80	278.30	5,707.7	102.5	-792.8	799.3	0.48	-0.23	-2.71	
5,901.0	8.80	276.00	5,834.2	104.9	-812.2	818.9	0.27	0.00	-1.80	
6,029.0	8.90	280.00	5,960.7	107.6	-831.7	838.5	0.49	0.08	3.13	
6,158.0	8.30	281.10	6,088.2	111.2	-850.6	857.8	0.48	-0.47	0.85	
6,286.0	8.30	272.80	6,214.9	113.4	-868.9	876.2	0.94	0.00	-6.48	
6,415.0	8.40	269.70	6,342.5	113.8	-887.6	894.8	0.36	0.08	-2.40	
6,543.0	8.00	269.50	6,469.2	113.7	-905.9	912.9	0.31	-0.31	-0.16	
6,671.0	5.60	274.60	6,596.3	114.1	-921.0	927.9	1.93	-1.88	3.98	
6,800.0	4.70	269.80	6,724.8	114.6	-932.6	939.4	0.77	-0.70	-3.72	
6,892.7	4.32	262.78	6,817.2	114.1	-939.9	946.6	0.72	-0.41	-7.57	
TARGET CIRCLE 1335'FNL, 2585'FNL										
6,928.0	4.20	259.80	6,852.4	113.7	-942.5	949.1	0.72	-0.35	-8.45	
7,057.0	5.50	229.90	6,980.9	108.9	-951.8	957.7	2.17	1.01	-23.18	
7,185.0	4.10	223.80	7,108.5	101.7	-959.7	964.5	1.16	-1.09	-4.77	
7,313.0	3.20	224.30	7,236.2	95.8	-965.4	969.2	0.70	-0.70	0.39	
7,442.0	2.50	217.30	7,365.1	91.0	-969.6	972.7	0.61	-0.54	-5.43	
7,570.0	2.30	229.20	7,492.9	87.1	-973.2	975.8	0.42	-0.16	9.30	
7,699.0	2.30	225.40	7,621.8	83.6	-977.0	979.1	0.12	0.00	-2.95	
7,795.0	2.10	227.80	7,717.8	81.0	-979.7	981.4	0.23	-0.21	2.50	
7,840.0	2.10	227.80	7,762.7	79.9	-980.9	982.4	0.00	0.00	0.00	

<b>Company:</b>	Synergy Resources	<b>Local Co-ordinate Reference:</b>	Well SRC Avex 10ND
<b>Project:</b>	SEC.10-T4N-R68W	<b>TVD Reference:</b>	WELL @ 5050.0ft (Original Well Elev)
<b>Site:</b>	SRC Avex 42-10D Pad Sec.10-T4N-R68W	<b>MD Reference:</b>	WELL @ 5050.0ft (Original Well Elev)
<b>Well:</b>	SRC Avex 10ND	<b>North Reference:</b>	True
<b>Wellbore:</b>	Wellbore #1	<b>Survey Calculation Method:</b>	Minimum Curvature
<b>Design:</b>	Wellbore #1	<b>Database:</b>	Landmark

Survey									
Measured Depth (ft)	Inclination (°)	Azimuth (°)	Vertical Depth (ft)	+N/-S (ft)	+E/-W (ft)	Vertical Section (ft)	Dogleg Rate (°/100ft)	Build Rate (°/100ft)	Turn Rate (°/100ft)
HARDLINES 75'W OF BHL - TARGET BHL 1335'FNL, 2585'FEL									

Wellbore Targets									
Target Name	Dip Angle (°)	Dip Dir. (°)	TVD (ft)	+N/-S (ft)	+E/-W (ft)	Northing (ft)	Easting (ft)	Latitude	Longitude
- hit/miss target									
- Shape									
TARGET CIRCLE 1335'F	0.00	0.00	6,807.0	152.7	-1,075.1	1,364,111.74	3,142,450.35	40.331761	-104.989039
- survey misses target center by 141.0ft at 6892.7ft MD (6817.2 TVD, 114.1 N, -939.9 E)									
- Circle (radius 75.0)									
HARDLINES 75'W OF BHL	0.00	0.00	7,827.0	52.7	-1,150.1	1,364,011.31	3,142,375.93	40.331487	-104.989308
- survey misses target center by 183.0ft at 7840.0ft MD (7762.7 TVD, 79.9 N, -980.9 E)									
- Polygon									
Point 1			7,827.0	0.0	0.0	1,364,011.31	3,142,375.93		
Point 2			7,827.0	200.0	0.0	1,364,211.30	3,142,374.77		
TARGET BHL 1335'F	0.00	0.00	7,827.0	152.7	-1,075.1	1,364,111.73	3,142,450.38	40.331761	-104.989039
- survey misses target center by 135.2ft at 7840.0ft MD (7762.7 TVD, 79.9 N, -980.9 E)									
- Point									

Checked By: _____	Approved By: _____	Date: _____
-------------------	--------------------	-------------