



Digital Drilling Data
Systems, LLC

GeoLogPlot

(Scale: 5":100' (100'))

Company: Encana Oil & Gas
Well: Davis 1C-9H
Field: DJ Wattenberg
Well ID: 5123353660000
Job Number: 125271

Location: DJ Basin
Operator 1: Jared Nichols
Operator 2: Chris McCain

State: CO
County: Weld
Country: USA

Elev KB: 4915
Elev DF: 13
Elev GL: 4902

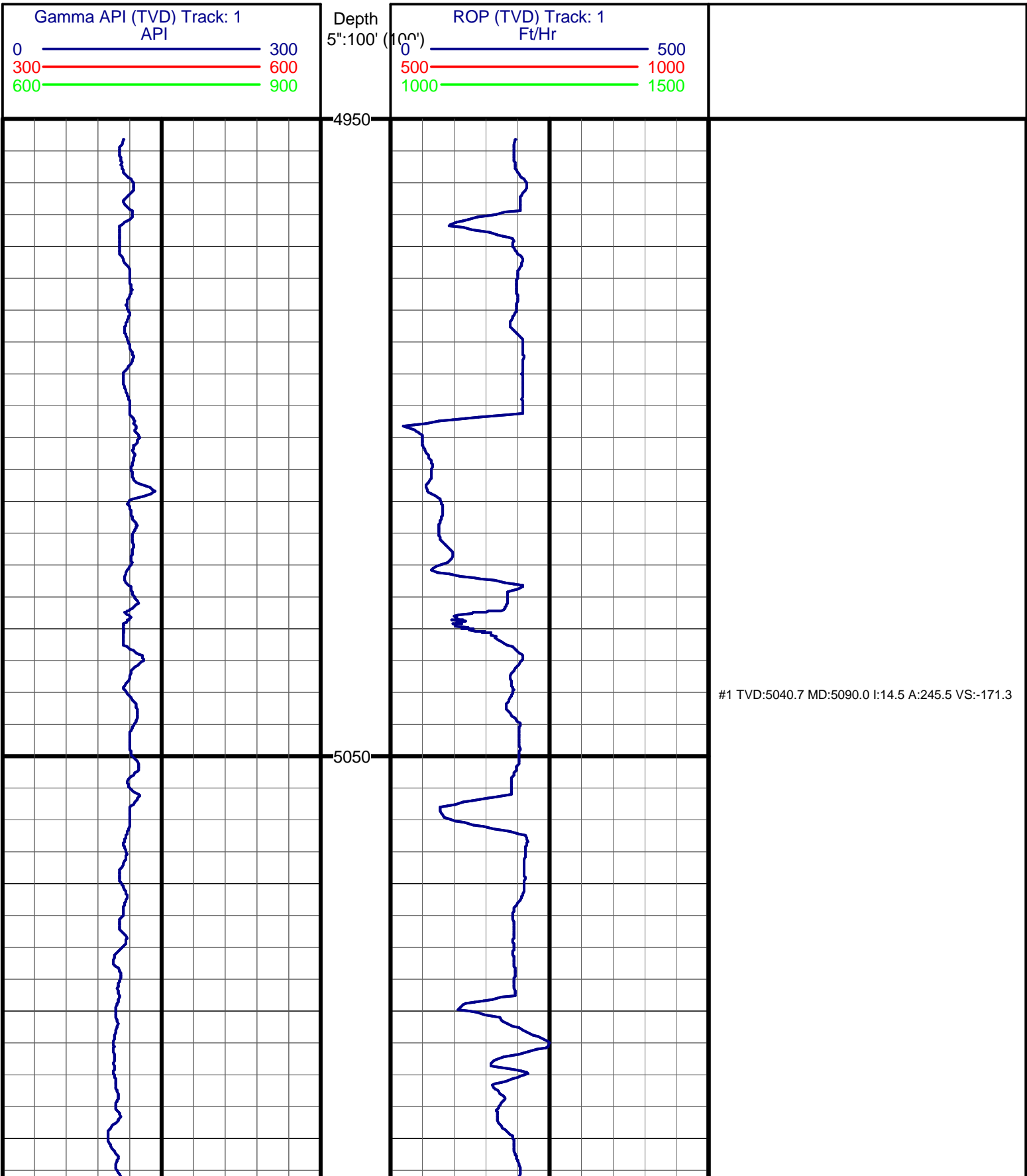
Comment 1:
Comment 2:
Comment 3:
Comment 4:
Comment 5:

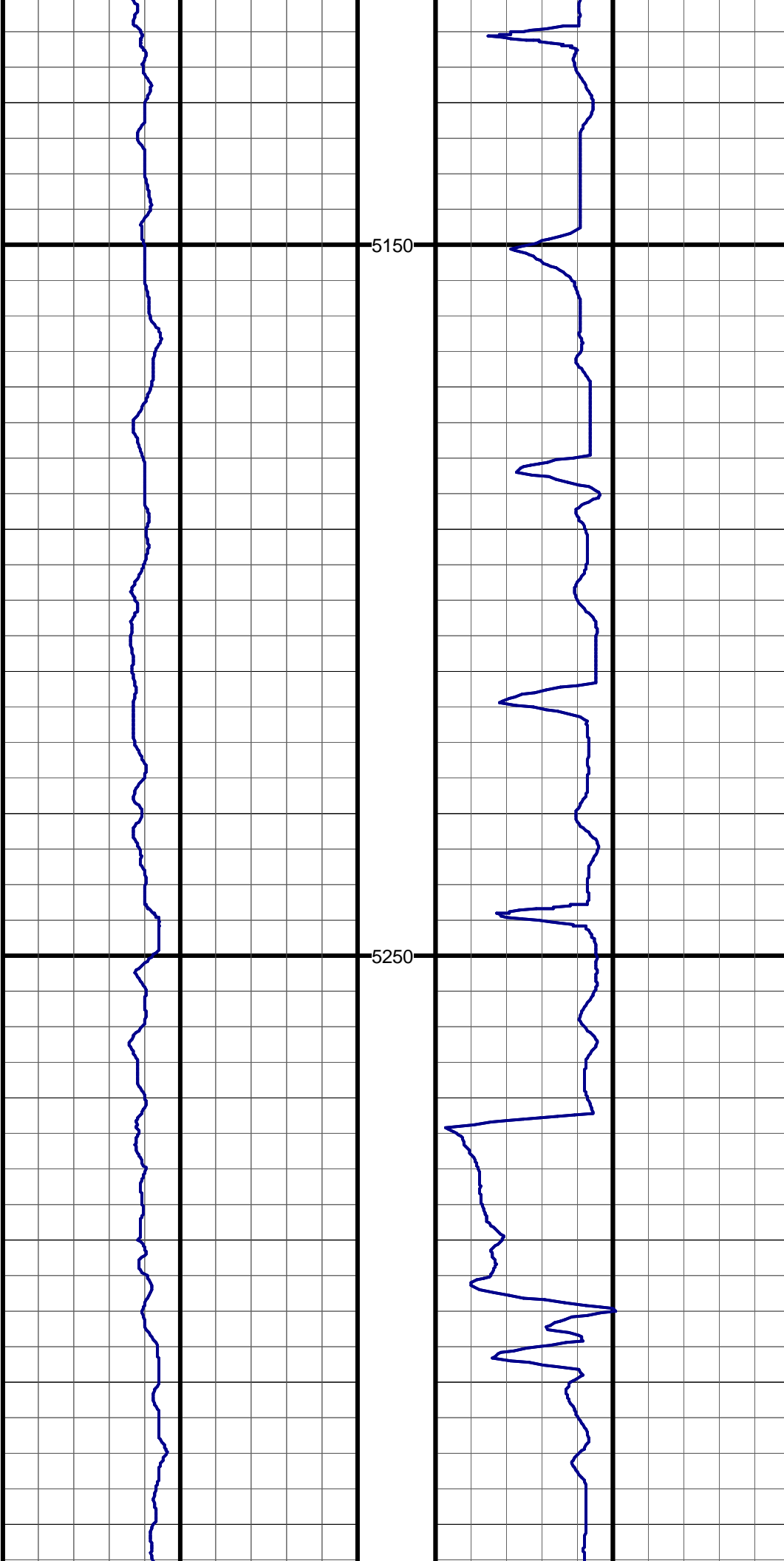
Hole Data			Casing Record		
Size	From	To	Size	From	To
12.25	0	996	9 5/8	0	983
8.75	996	7655	7	0	7637
6.125	7655	14495	4 1/2	0	14495

Tool Run Data	Run #1	Run #2	Run #3	Run #4	Run #5
Tool S/N	1129	1129	1129`	1167	1065
Cal Factor	4.27	4.27	2.75	2.75	2.75
Gamma Offset	38	38	36	36	36
Start Depth	996	7453	7655	7732	7769
Start Date	4/13	4/22	4/26	4/28	4/28
Start Time	11:00	3:00	14:00	4:30	23:00
End Depth	7453	7655	7732	7769	14495
End Date	4/18	4/23	4/28	4/28	5/3
End Time	1:00	16:00	1:00	21:00	12:00

Tool Run Data	Run #6	Run #7	Run #8	Run #9	Run #10		Tool Run Data	Run #11	Run #12	Run #13	Run #14	Run #15
Tool S/N							Tool S/N					
Cal Factor							Cal Factor					
Offset							Offset					
Start Depth							Start Depth					
Start Date							Start Date					
Start Time							Start Time					
End Depth							End Depth					
End Date												
End Time												

End Date					
End Time					

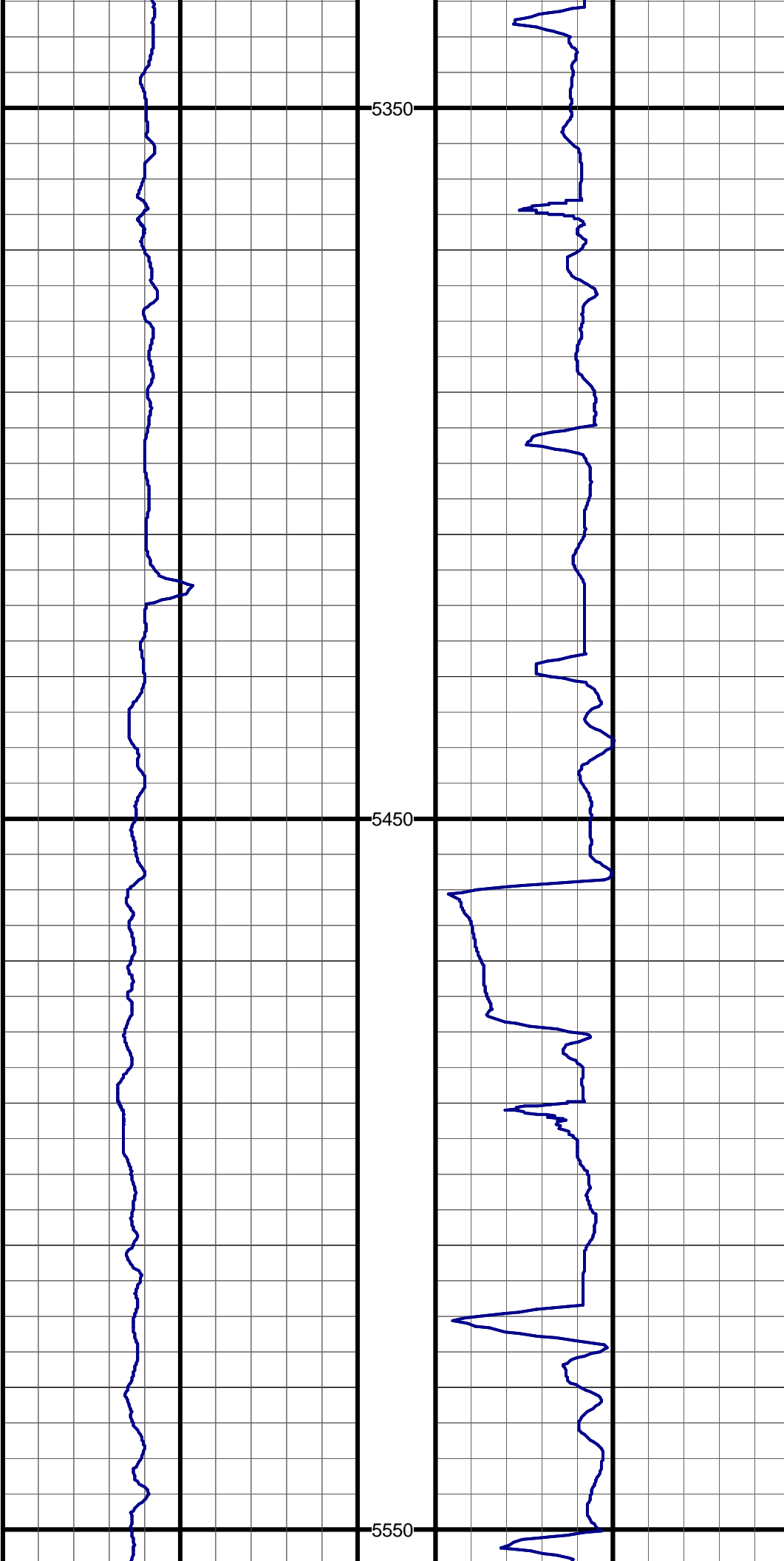




#2 TVD:5132.8 MD:5185.0 I:13.8 A:245.5 VS:-180.9

#3 TVD:5225.3 MD:5280.0 I:12.5 A:244.0 VS:-190.1

#4 TVD:5317.6 MD:5375.0 I:14.7 A:241.7 VS:-200.3



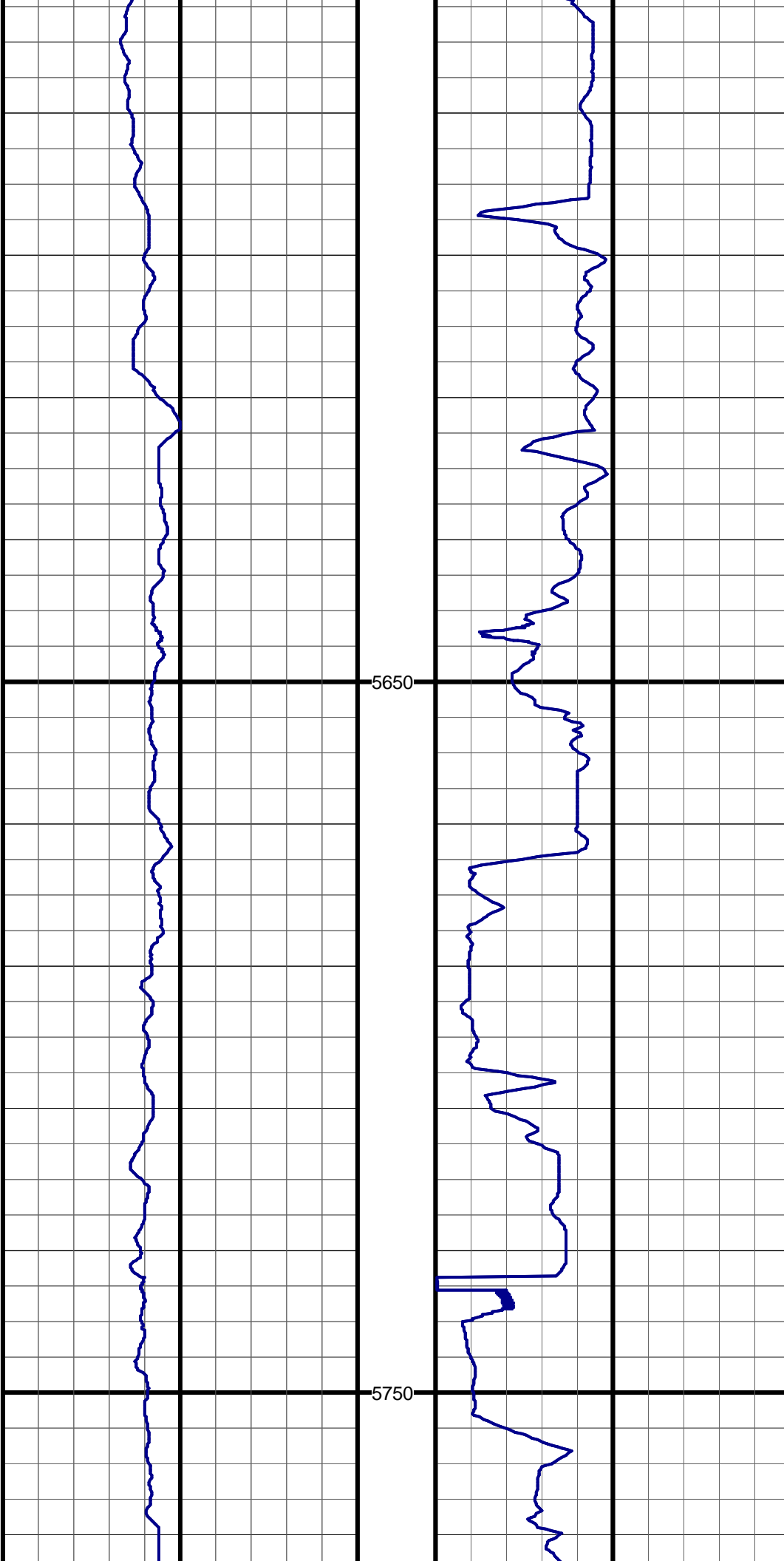
5350

5450

5550

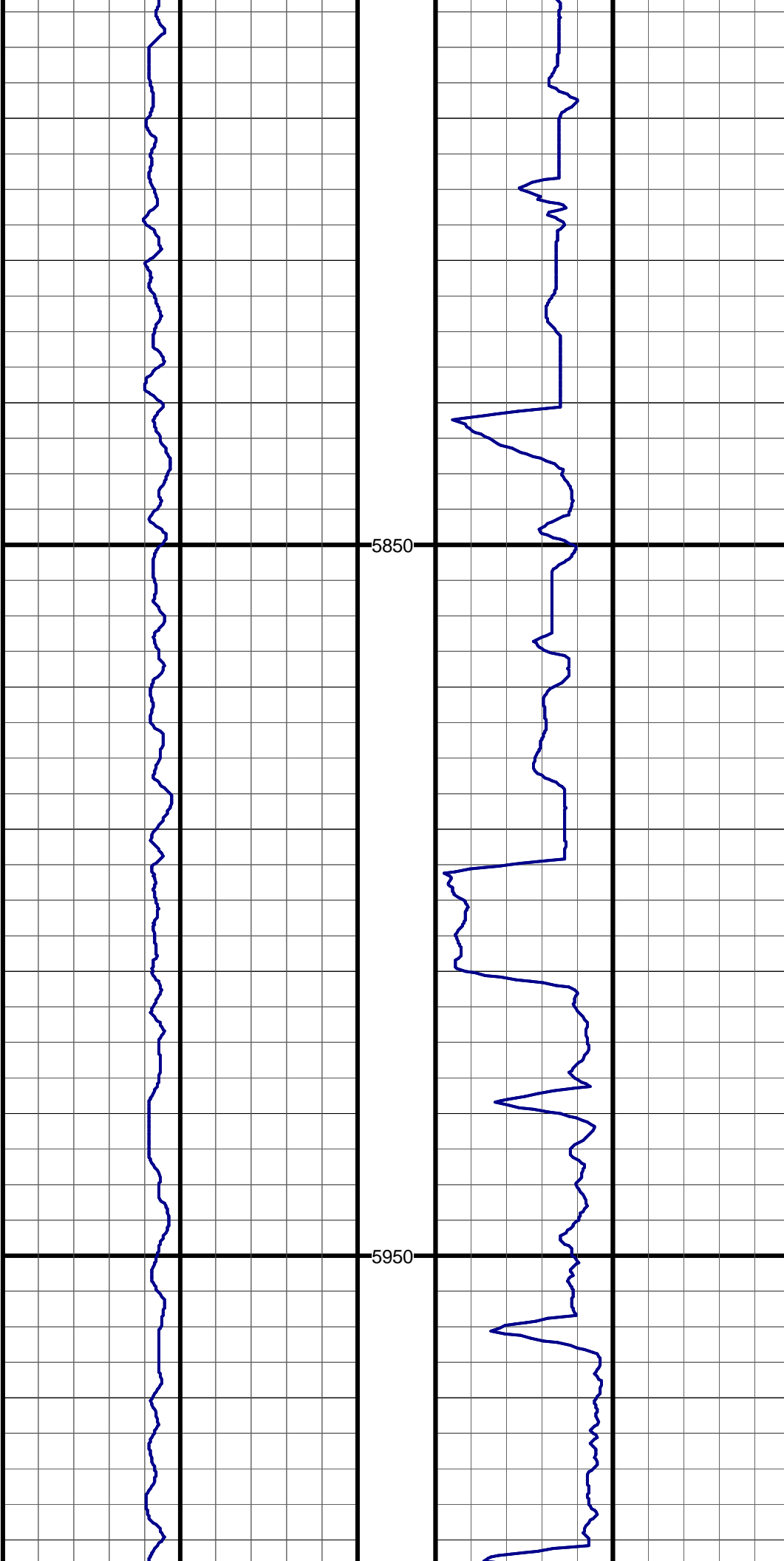
#5 TVD:5409.9 MD:5470.0 I:12.9 A:240.0 VS:-211.3

#6 TVD:5502.3 MD:5565.0 I:14.1 A:248.4 VS:-220.9



#7 TVD:5595.8 MD:5661.0 I:11.8 A:248.7 VS:-228.8

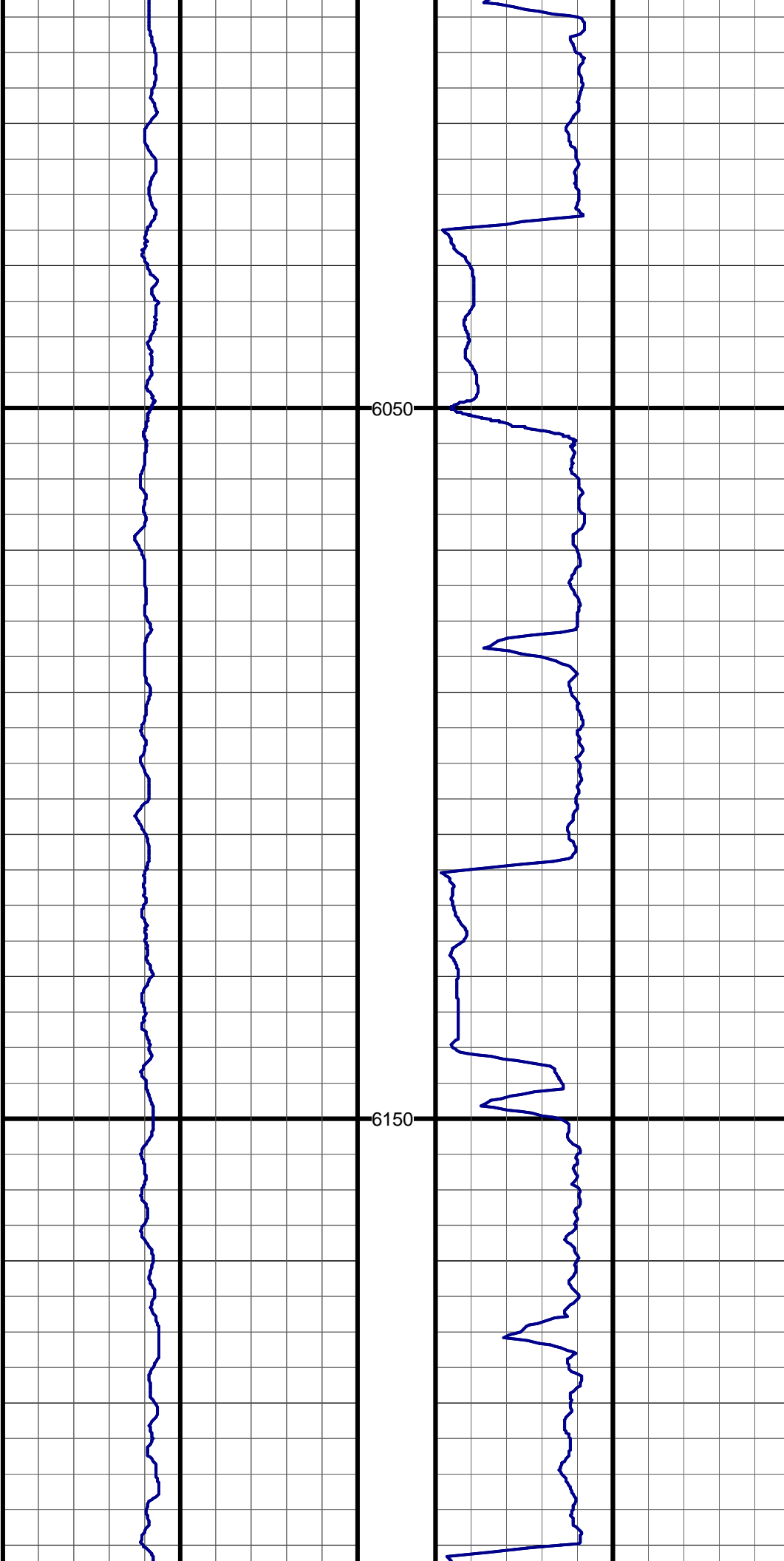
#8 TVD:5687.9 MD:5755.0 I:11.3 A:252.3 VS:-235.1



#9 TVD:5781.7 MD:5851.0 I:13.4 A:254.3 VS:-240.9

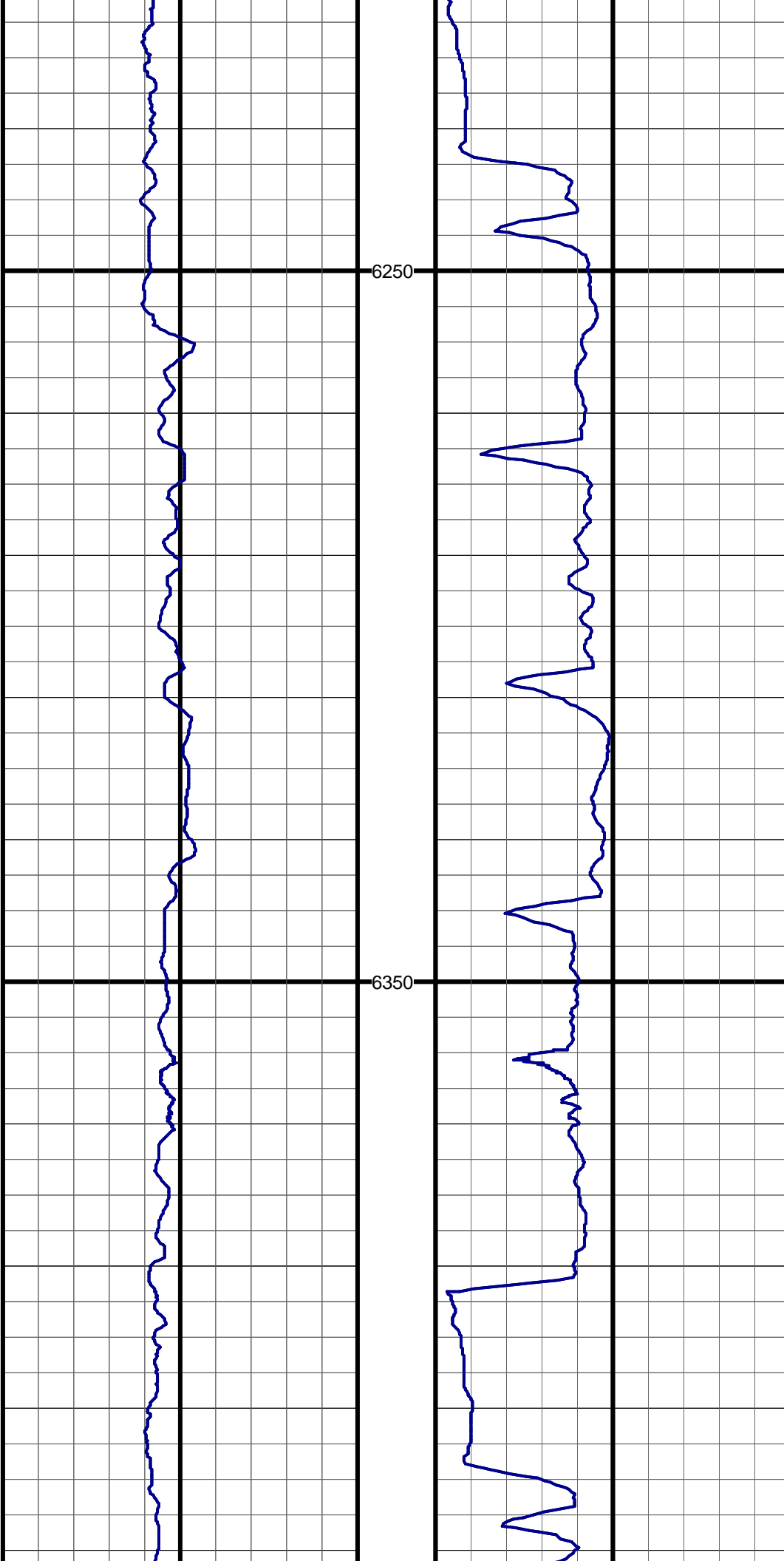
#10 TVD:5874.5 MD:5946.0 I:11.1 A:253.9 VS:-246.5

#11 TVD:5967.9 MD:6041.0 I:9.8 A:254.7 VS:-251.1



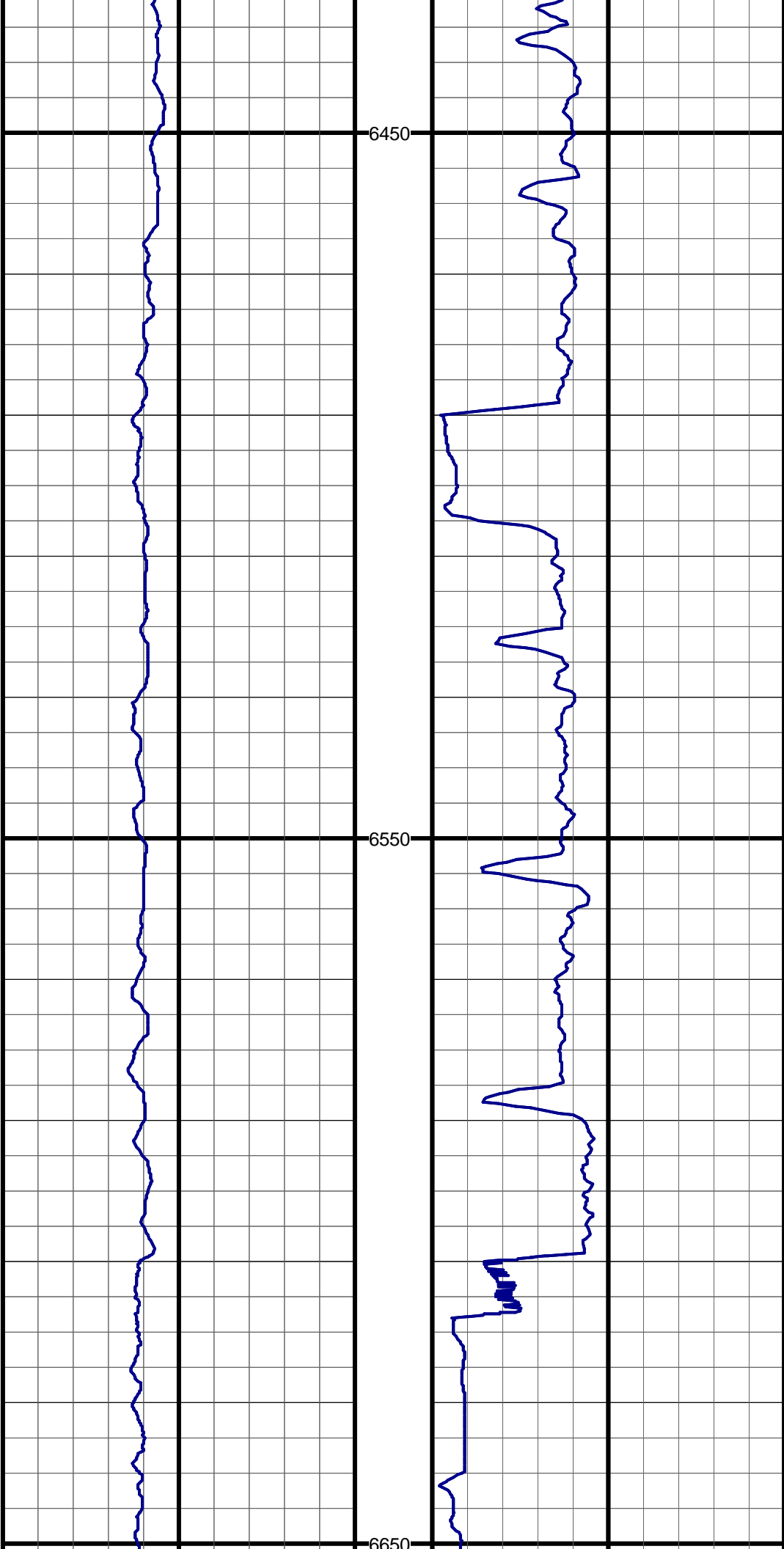
#12 TVD:6061.4 MD:6136.0 I:10.7 A:258.3 VS:-255.0

#13 TVD:6155.6 MD:6232.0 I:11.7 A:251.4 VS:-260.0



#14 TVD:6248.4 MD:6327.0 I:13.2 A:247.0 VS:-267.3

#15 TVD:6341.3 MD:6422.0 I:10.4 A:248.3 VS:-274.7



#16 TVD:6434.6 MD:6517.0 I:11.3 A:245.9 VS:-281.7

6450

#17 TVD:6527.8 MD:6612.0 I:11.2 A:250.2 VS:-288.6

6550

#18 TVD:6559.2 MD:6644.0 I:10.4 A:250.1 VS:-290.6

#19 TVD:6590.8 MD:6676.0 I:9.6 A:249.2 VS:-292.5

#20 TVD:6622.3 MD:6708.0 I:10.3 A:262.8 VS:-293.9

6650

