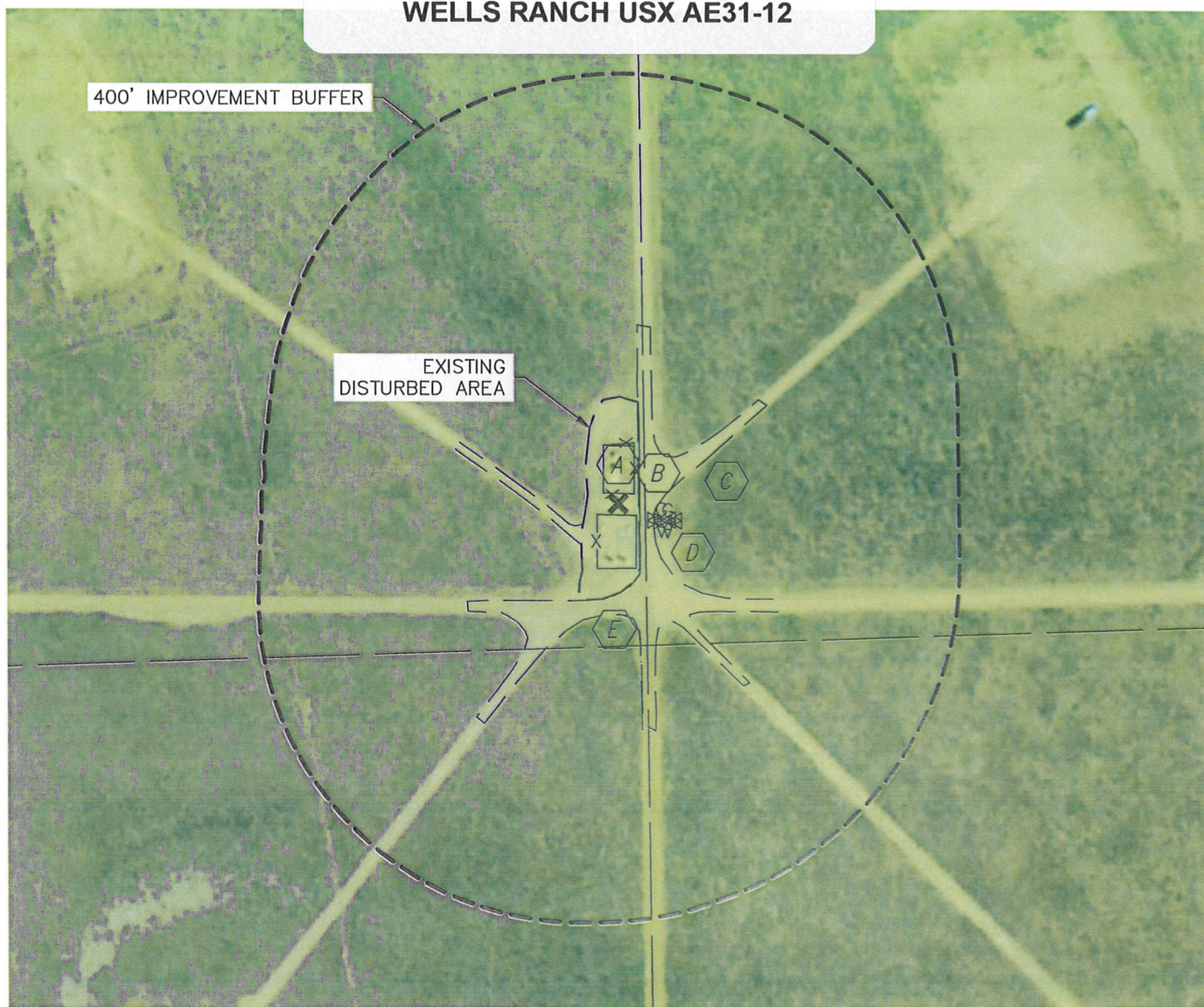


PRODUCTION FACILITY AS-BUILT

SECTION: 31
TOWNSHIP: 6N
RANGE: 62W

WELLS RANCH USX AE31-12








REFERENCE POINT LOCATION:

LAT: 40.43980°N
LONG: 104.37118°W
ELEV: 4679'
PDOP: 1.7
DATE: 11/7/2012
OPERATOR: ADAM KELLY
1/41/4: NW1/4SW1/4
FSL: 1501'
FWL: 1291'
DISTANCE TO WELL: 750'±
ASSOCIATED NEW WELLS:
NONE


ASSOCIATED EXISTING WELLS:

WELLS RANCH USX AE31-12
WELLS RANCH USX AE31-14
WELLS RANCH USX AE31-11P
WELLS RANCH USX AE31-13P

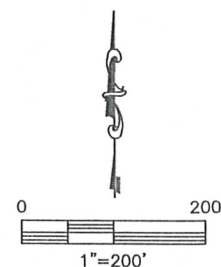
IMPROVEMENTS:

-  EX. PRODUCTION EQUIPMENT (NOBLE) 12' N, 15' S
-  EDGE OF DISTURBANCE 27' E, 40' W, 113' S, 132' N
-  FIELD ROAD 27' E, 61' SW, 202' SW, 88' NE, 113' S, 152' SE
-  GAS VALVE 58' SE, 66' SE
-  DITCH 140' S

LEGEND

 - REFERENCE POINT
ALL DISTANCES ARE APPROXIMATE.

NEAREST: BUILDING 5280'+,
PUBLIC ROAD 5280'+, ABOVE GROUND UTILITY 5280'+,
RAILROAD 5280'+, PROPERTY LINE 1291' W



DATE: 11/13/2012
PROJECT#: 2012169