

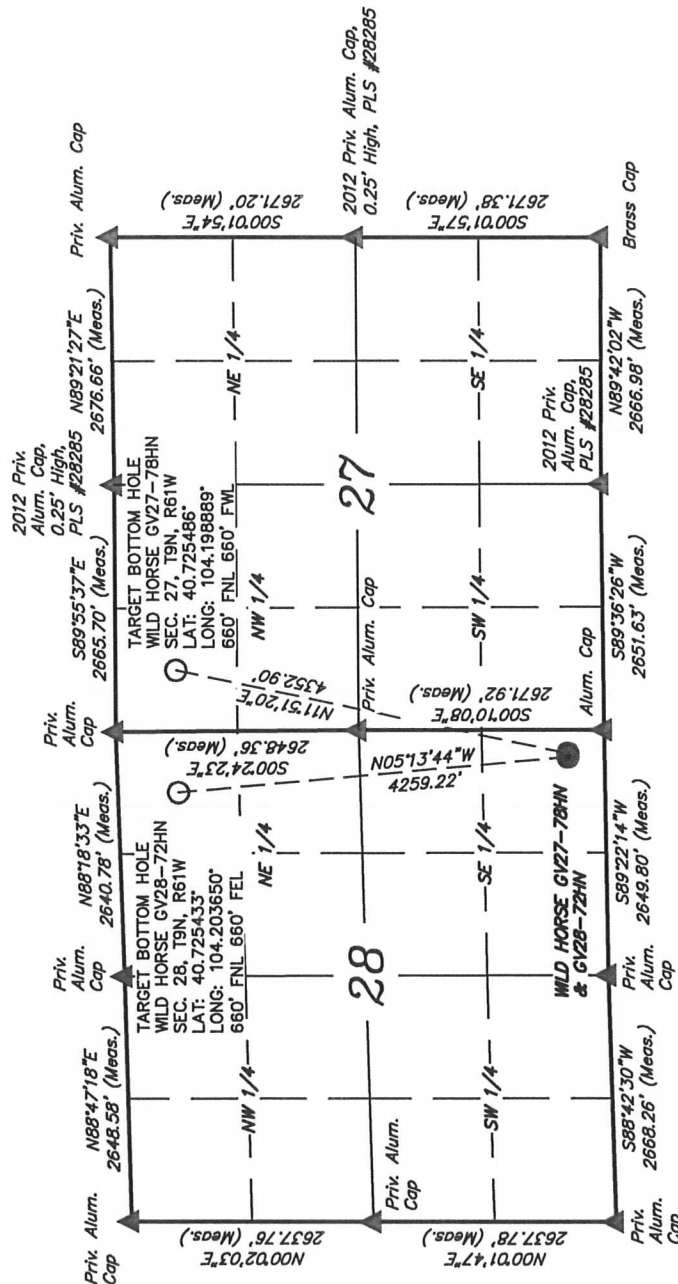
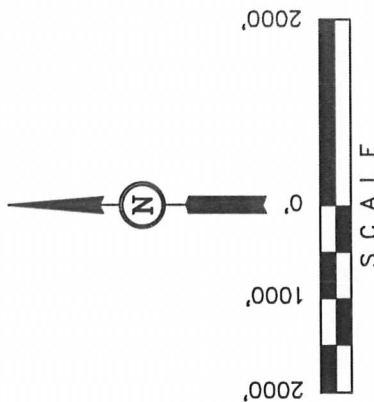
# MULTI-WELL PLAN T9N, R61W, 6th P.M.

NOBLE ENERGY, INC.

Well location, WILD HORSE GV27-78HN & GV28-72HN, located as shown in the SE 1/4 SE 1/4 of Section 28, T9N, R61W, 6th P.M., Weld County, Colorado.

## BASIS OF BEARINGS

BASIS OF BEARINGS IS A G.P.S. OBSERVATION.



## LEGEND:

- ▲ = SECTION CORNERS LOCATED.
- = PROPOSED WELL HEAD.
- = TARGET BOTTOM HOLE.

UNTAAH ENGINEERING & LAND SURVEYING  
85 SOUTH 200 EAST - VERNAL, UTAH 84078  
(435) 789-1017

SCALE 1" = 1000'	DATE SURVEYED: 07-26-12	DATE DRAWN: 10-19-12
PARTY LOREN SHANKS A.G. J.M.H.	REFERENCES G.L.O. PLAT	
WEATHER HOT	FILE	NOBLE ENERGY, INC.

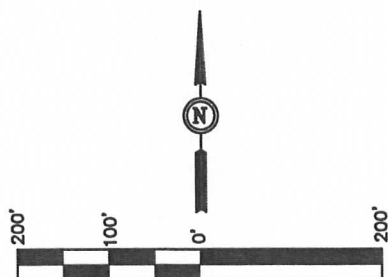
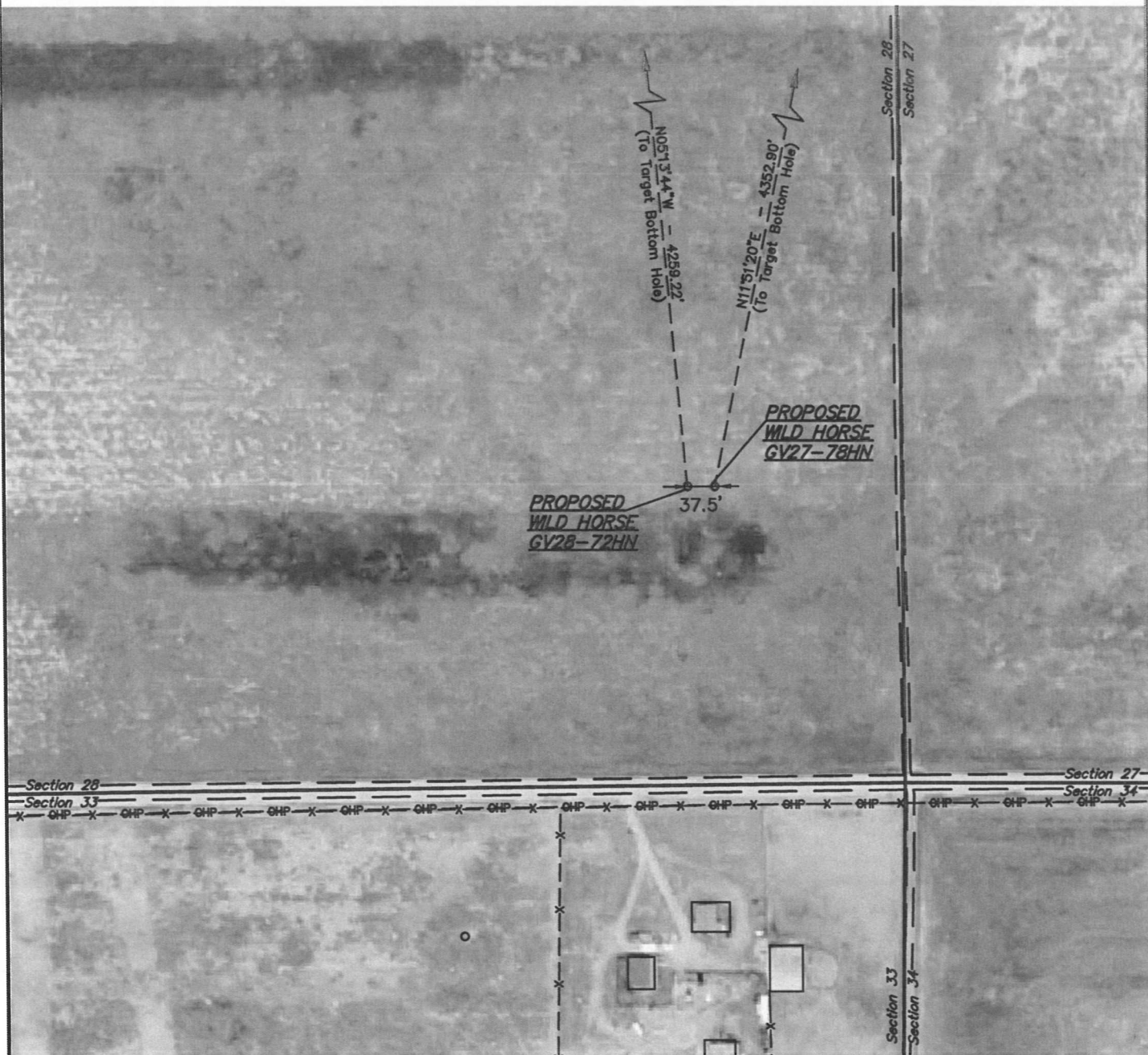
# WILD HORSE GV 27-78HN

NOBLE ENERGY, INC.

MULTI-WELL PLAN

WILD HORSE GV27-78HN & GV28-72HN  
SECTION 28, T9N, R61W, 6th P.M.

DATE: 10-19-12  
DRAWN BY: J.M.H.



PAD DETAILS:  
WELL HEAD SPACING = 37.5'

UINTAH ENGINEERING & LAND SURVEYING  
85 So. 200 East \* Vernal, Utah 84078 \* (435) 789-1017