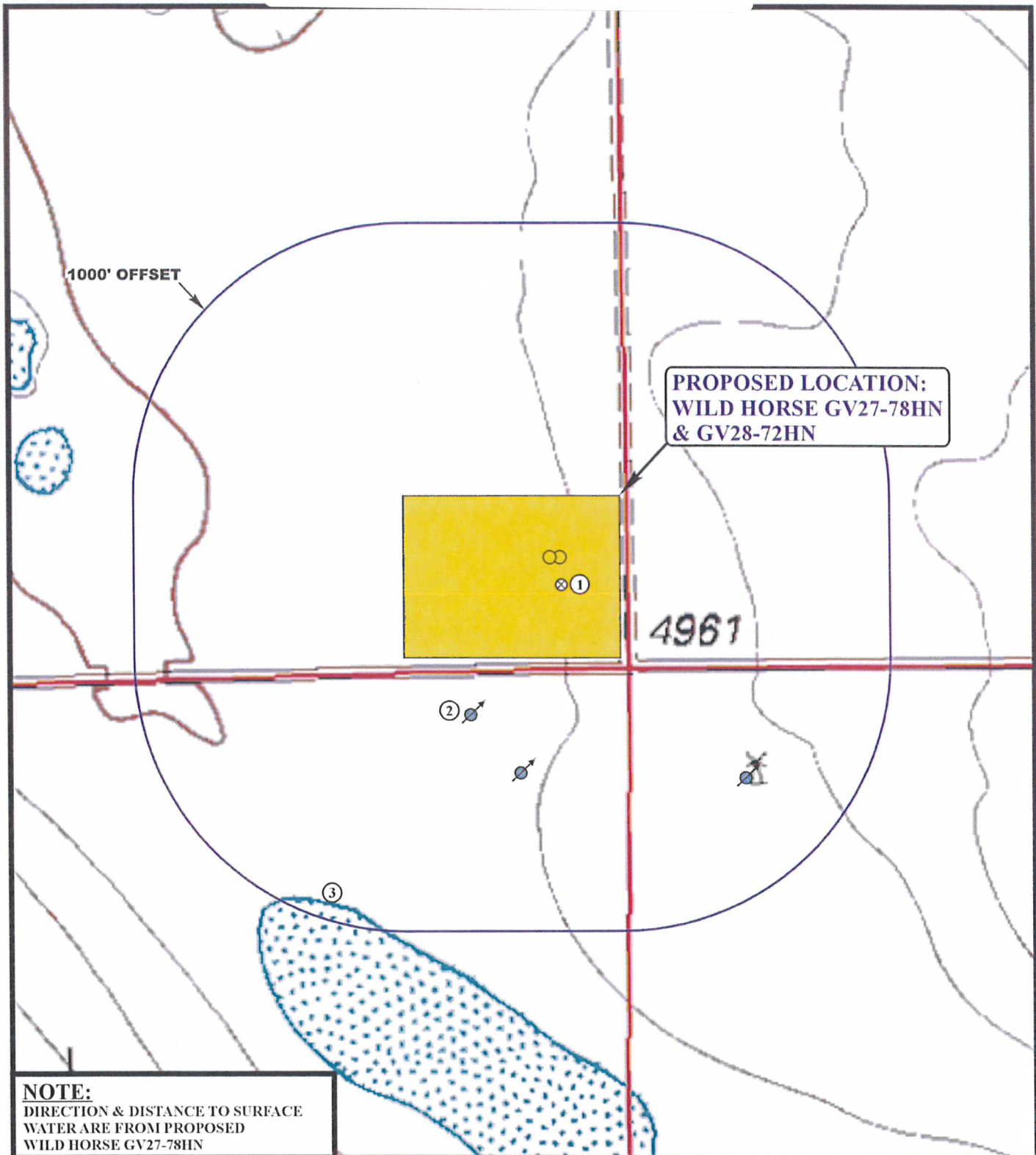


# WILD HORSE GV 27-78HN



## NOTE:

DIRECTION & DISTANCE TO SURFACE  
WATER ARE FROM PROPOSED  
WILD HORSE GV27-78HN

## LEGEND:

- ① ⊗ ABANDONED STANDPIPE 100' S
- ② ⚙ WATER WELL 696' SW, 804' SW, 1,060' SE
- ③ DRY POND 1,450' SW

NOBLE ENERGY, INC.

WILD HORSE GV27-78HN & GV28-72HN  
SECTION 28, T9N, R61W, 6th P.M.



Uintah Engineering & Land Surveying  
85 South 200 East Vernal, Utah 84078  
(435) 789-1017 \* FAX (435) 789-1813



HYDROLOGY  
MAP

10 19 12  
MONTH DAY YEAR

SCALE: 1" = 500' DRAWN BY: B.D.H. REVISED: 00-00-00

