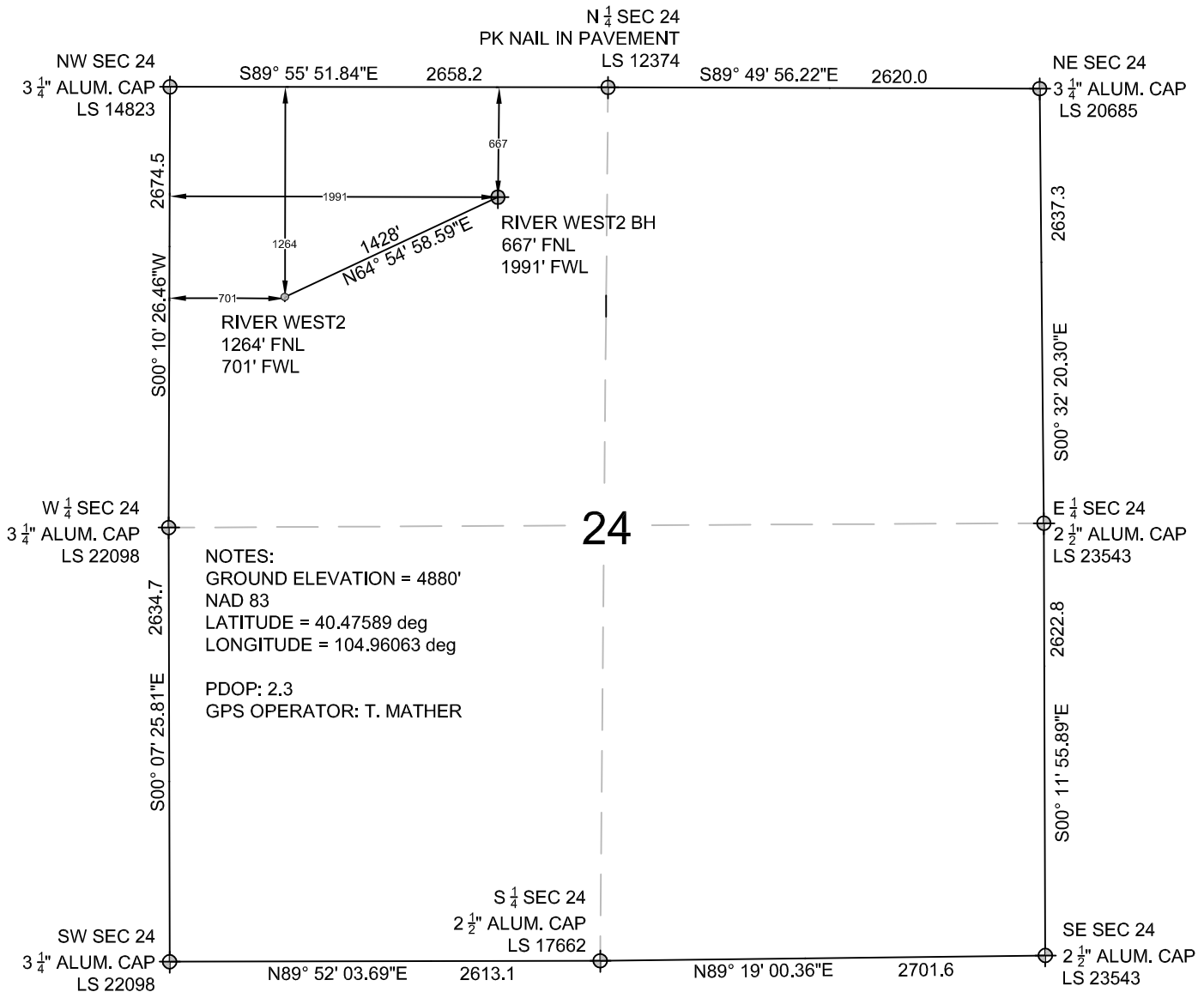


WELL LOCATION CERTIFICATE: RIVER WEST-2

SECTION 24, TOWNSHIP 6 NORTH, RANGE 68 WEST, 6TH P.M.

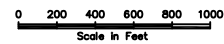


NOTES:
 GROUND ELEVATION = 4880'
 NAD 83
 LATITUDE = 40.47589 deg
 LONGITUDE = 104.96063 deg
 PDOP: 2.3
 GPS OPERATOR: T. MATHER

WELL **RIVER WEST-2** TO BE LOCATED 1264' FNL AND 701' FWL, SECTION 24, T6N, R68W OF 6TH P.M.

LEGEND

- ⊕ EXISTING MONUMENT
- ⊙ PROPOSED WELL
- ⊕ BOTTOM HOLE
- EXISTING WELL
- BH = BOTTOM HOLE



NOTES:

- THIS FIELD SURVEY CONFORMS TO THE MINIMUM STANDARDS SET BY THE COGCC, RULE NO. 215
- ELEVATIONS ARE NAVD 88, USING CONUS GEOID 03 AS OBSERVED FROM GPS OBSERVATIONS
- THE BASIS OF BEARINGS ARE PER STATE PLANE COORDINATE COLORADO NORTH ZONE NAD 83
- DISTANCES ARE MEASURED PERPENDICULAR TO THE NEAREST SECTION LINE



InfoMaption Inc.

1514 Banyan Dr.
 Fort Collins, CO 80521
 Ph. 970.581.3131
 www.infomaption.com

OPERATOR:
 RANCHERS EXPLORATION

SURFACE LOCATION:
 NW 1/4 NW 1/4 SEC. 24, T6N R68W

Field Data	TRM	Date	4-23-2012	File Name.	120424 RIVER WEST-2 WELL PLAT.dwg
Drawn	TRM	Date	4-26-2012	Project No.	120104
				Well Name:	RIVER WEST WELLS-2