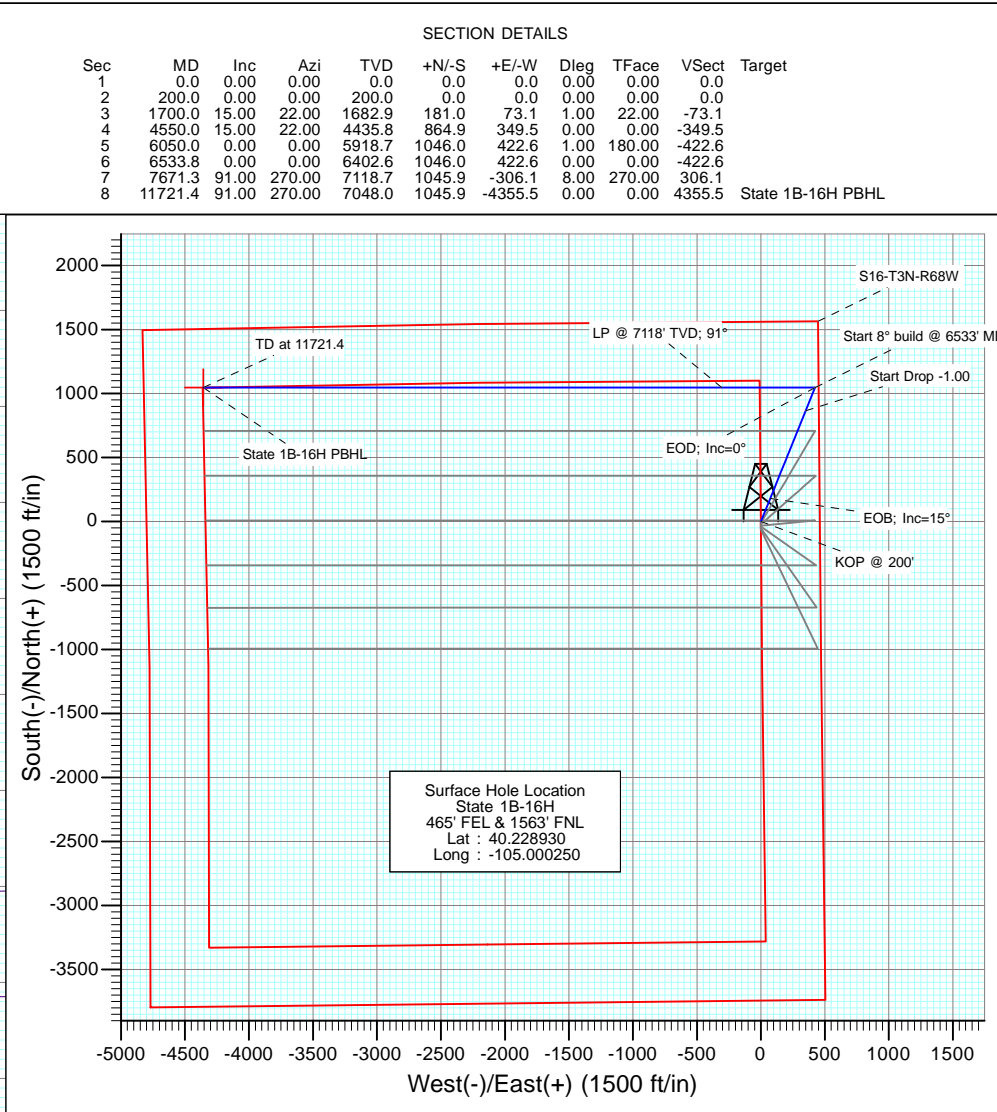
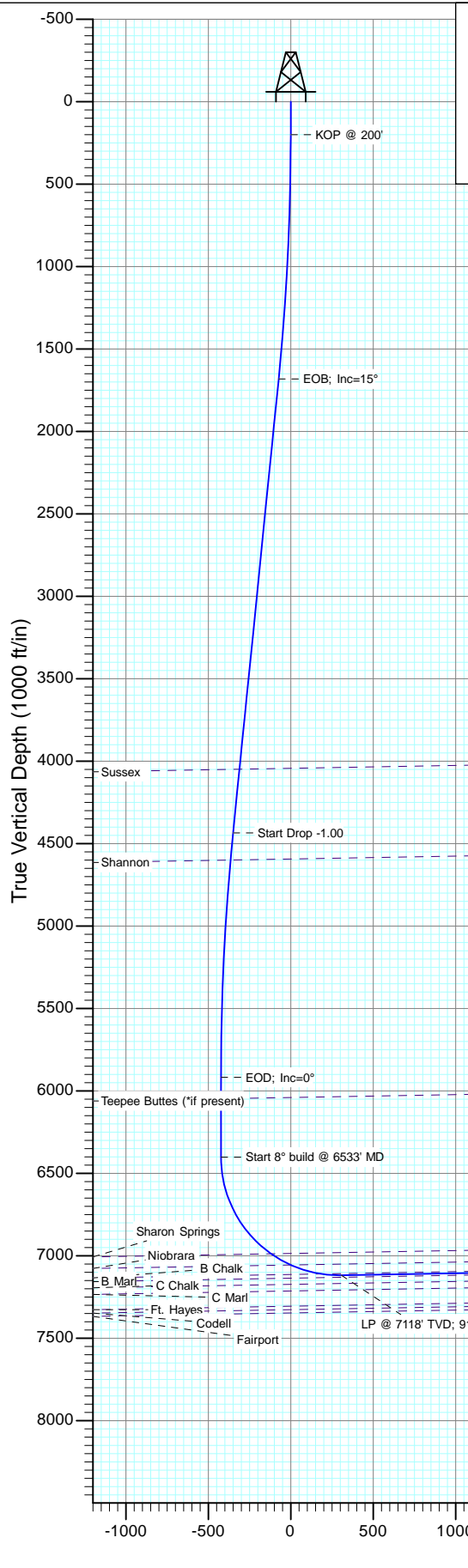




Project: DJ Wattenberg
Site: S16-T3N-R68W (State)
Well: State 1B-16H
Wellbore: Hz
Design: Plan #1

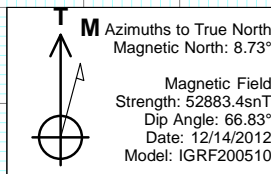


DESIGN TARGET DETAILS

Name	+N/-S	+E/-W	Northing	Easting	Latitude	Longitude
State 1B-16H PBHL	1045.9	-4355.5	1327658.37	3135180.93	40.231800	-105.015850

FORMATION TOP DETAILS

TVDPath	MDPath	Formation
4049.4	4150.0	Sussex
4600.4	4719.7	Shannon
6048.4	6179.6	Teepee Buttes (*if present)
6989.1	7221.0	Sharon Springs
7057.0	7359.1	Niobrara
7110.7	7551.5	B Chalk



Plan #1
State 1B-16H
12xxx; LR
WELL @ 5039.0ft (Original Well Elev)
Ground Elevation @ 5026.0
North American Datum 1983
Well State 1B-16H, True North

Planning Report

Database:	USA EDM 5000 Multi Users DB	Local Co-ordinate Reference:	Well State 1B-16H
Company:	EnCana Oil & Gas (USA) Inc	TVD Reference:	WELL @ 5039.0ft (Original Well Elev)
Project:	DJ Wattenberg	MD Reference:	WELL @ 5039.0ft (Original Well Elev)
Site:	S16-T3N-R68W (State)	North Reference:	True
Well:	State 1B-16H	Survey Calculation Method:	Minimum Curvature
Wellbore:	Hz		
Design:	Plan #1		

Project	DJ Wattenberg		
Map System:	US State Plane 1983	System Datum:	Mean Sea Level
Geo Datum:	North American Datum 1983		
Map Zone:	Colorado Northern Zone		

Site		S16-T3N-R68W (State)			
Site Position:		Northing:	1,326,575.12 ft	Latitude:	40.228760
From:	Lat/Long	Easting:	3,139,542.66 ft	Longitude:	-105.000250
Position Uncertainty:	0.0 ft	Slot Radius:	13.200 in	Grid Convergence:	0.32 °

Well	State 1B-16H					
Well Position	+N/-S	0.0 ft	Northing:	1,326,637.04 ft	Latitude:	40.228930
	+E/-W	0.0 ft	Easting:	3,139,542.31 ft	Longitude:	-105.000250
Position Uncertainty		0.0 ft	Wellhead Elevation:	ft	Ground Level:	5,026.0 ft

Wellbore	Hz				
Magnetics	Model Name	Sample Date	Declination (°)	Dip Angle (°)	Field Strength (nT)
	IGRF200510	12/14/2012	8.73	66.83	52,883

Design	Plan #1			
Audit Notes:				
Version:	Phase:	PLAN	Tie On Depth:	0.0
Vertical Section:	Depth From (TVD) (ft)	+N/-S (ft)	+E/-W (ft)	Direction (°)
	0.0	0.0	0.0	270.00

Plan Sections										
Measured Depth (ft)	Inclination (°)	Azimuth (°)	Vertical Depth (ft)	+N/-S (ft)	+E/-W (ft)	Dogleg Rate (°/100ft)	Build Rate (°/100ft)	Turn Rate (°/100ft)	TFO (°)	Target
0.0	0.00	0.00	0.0	0.0	0.0	0.00	0.00	0.00	0.00	
200.0	0.00	0.00	200.0	0.0	0.0	0.00	0.00	0.00	0.00	
1,700.0	15.00	22.00	1,682.9	181.0	73.1	1.00	1.00	0.00	22.00	
4,550.0	15.00	22.00	4,435.8	864.9	349.5	0.00	0.00	0.00	0.00	
6,050.0	0.00	0.00	5,918.7	1,046.0	422.6	1.00	-1.00	0.00	180.00	
6,533.8	0.00	0.00	6,402.6	1,046.0	422.6	0.00	0.00	0.00	0.00	
7,671.3	91.00	270.00	7,118.7	1,045.9	-306.1	8.00	8.00	0.00	270.00	
11,721.4	91.00	270.00	7,048.0	1,045.9	-4,355.5	0.00	0.00	0.00	0.00	State 1B-16H PBHL

Planning Report

Database:	USA EDM 5000 Multi Users DB	Local Co-ordinate Reference:	Well State 1B-16H
Company:	EnCana Oil & Gas (USA) Inc	TVD Reference:	WELL @ 5039.0ft (Original Well Elev)
Project:	DJ Wattenberg	MD Reference:	WELL @ 5039.0ft (Original Well Elev)
Site:	S16-T3N-R68W (State)	North Reference:	True
Well:	State 1B-16H	Survey Calculation Method:	Minimum Curvature
Wellbore:	Hz		
Design:	Plan #1		

Planned Survey

Measured Depth (ft)	Inclination (°)	Azimuth (°)	Vertical Depth (ft)	+N/-S (ft)	+E/-W (ft)	Vertical Section (ft)	Dogleg Rate (°/100ft)	Build Rate (°/100ft)	Comments / Formations
0.0	0.00	0.00	0.0	0.0	0.0	0.0	0.00	0.00	
100.0	0.00	0.00	100.0	0.0	0.0	0.0	0.00	0.00	
200.0	0.00	0.00	200.0	0.0	0.0	0.0	0.00	0.00	KOP @ 200'
300.0	1.00	22.00	300.0	0.8	0.3	-0.3	1.00	1.00	
400.0	2.00	22.00	400.0	3.2	1.3	-1.3	1.00	1.00	
500.0	3.00	22.00	499.9	7.3	2.9	-2.9	1.00	1.00	
600.0	4.00	22.00	599.7	12.9	5.2	-5.2	1.00	1.00	
700.0	5.00	22.00	699.4	20.2	8.2	-8.2	1.00	1.00	
800.0	6.00	22.00	798.9	29.1	11.8	-11.8	1.00	1.00	
900.0	7.00	22.00	898.3	39.6	16.0	-16.0	1.00	1.00	
1,000.0	8.00	22.00	997.4	51.7	20.9	-20.9	1.00	1.00	
1,100.0	9.00	22.00	1,096.3	65.4	26.4	-26.4	1.00	1.00	
1,200.0	10.00	22.00	1,194.9	80.7	32.6	-32.6	1.00	1.00	
1,300.0	11.00	22.00	1,293.3	97.6	39.4	-39.4	1.00	1.00	
1,400.0	12.00	22.00	1,391.2	116.1	46.9	-46.9	1.00	1.00	
1,500.0	13.00	22.00	1,488.9	136.2	55.0	-55.0	1.00	1.00	
1,600.0	14.00	22.00	1,586.1	157.8	63.8	-63.8	1.00	1.00	
1,700.0	15.00	22.00	1,682.9	181.0	73.1	-73.1	1.00	1.00	EOB; Inc=15°
1,800.0	15.00	22.00	1,779.5	205.0	82.8	-82.8	0.00	0.00	
1,900.0	15.00	22.00	1,876.1	229.0	92.5	-92.5	0.00	0.00	
2,000.0	15.00	22.00	1,972.7	253.0	102.2	-102.2	0.00	0.00	
2,100.0	15.00	22.00	2,069.3	277.0	111.9	-111.9	0.00	0.00	
2,200.0	15.00	22.00	2,165.9	301.0	121.6	-121.6	0.00	0.00	
2,300.0	15.00	22.00	2,262.5	325.0	131.3	-131.3	0.00	0.00	
2,400.0	15.00	22.00	2,359.1	349.0	141.0	-141.0	0.00	0.00	
2,500.0	15.00	22.00	2,455.7	373.0	150.7	-150.7	0.00	0.00	
2,600.0	15.00	22.00	2,552.3	397.0	160.4	-160.4	0.00	0.00	
2,700.0	15.00	22.00	2,648.8	421.0	170.1	-170.1	0.00	0.00	
2,800.0	15.00	22.00	2,745.4	445.0	179.8	-179.8	0.00	0.00	
2,900.0	15.00	22.00	2,842.0	469.0	189.5	-189.5	0.00	0.00	
3,000.0	15.00	22.00	2,938.6	493.0	199.2	-199.2	0.00	0.00	
3,100.0	15.00	22.00	3,035.2	517.0	208.9	-208.9	0.00	0.00	
3,200.0	15.00	22.00	3,131.8	541.0	218.6	-218.6	0.00	0.00	
3,300.0	15.00	22.00	3,228.4	565.0	228.3	-228.3	0.00	0.00	
3,400.0	15.00	22.00	3,325.0	589.0	238.0	-238.0	0.00	0.00	
3,500.0	15.00	22.00	3,421.6	613.0	247.7	-247.7	0.00	0.00	
3,600.0	15.00	22.00	3,518.2	637.0	257.3	-257.3	0.00	0.00	
3,700.0	15.00	22.00	3,614.8	661.0	267.0	-267.0	0.00	0.00	
3,800.0	15.00	22.00	3,711.4	685.0	276.7	-276.7	0.00	0.00	
3,900.0	15.00	22.00	3,808.0	709.0	286.4	-286.4	0.00	0.00	
4,000.0	15.00	22.00	3,904.6	733.0	296.1	-296.1	0.00	0.00	
4,100.0	15.00	22.00	4,001.1	756.9	305.8	-305.8	0.00	0.00	
4,150.0	15.00	22.00	4,049.4	768.9	310.7	-310.7	0.00	0.00	Sussex
4,200.0	15.00	22.00	4,097.7	780.9	315.5	-315.5	0.00	0.00	
4,300.0	15.00	22.00	4,194.3	804.9	325.2	-325.2	0.00	0.00	
4,400.0	15.00	22.00	4,290.9	828.9	334.9	-334.9	0.00	0.00	
4,500.0	15.00	22.00	4,387.5	852.9	344.6	-344.6	0.00	0.00	
4,550.0	15.00	22.00	4,435.8	864.9	349.5	-349.5	0.00	0.00	Start Drop -1.00
4,600.0	14.50	22.00	4,484.2	876.7	354.2	-354.2	1.00	-1.00	
4,700.0	13.50	22.00	4,581.2	899.2	363.3	-363.3	1.00	-1.00	
4,719.7	13.30	22.00	4,600.4	903.4	365.0	-365.0	1.00	-1.00	Shannon
4,800.0	12.50	22.00	4,678.6	920.0	371.7	-371.7	1.00	-1.00	

Planning Report

Database:	USA EDM 5000 Multi Users DB	Local Co-ordinate Reference:	Well State 1B-16H
Company:	EnCana Oil & Gas (USA) Inc	TVD Reference:	WELL @ 5039.0ft (Original Well Elev)
Project:	DJ Wattenberg	MD Reference:	WELL @ 5039.0ft (Original Well Elev)
Site:	S16-T3N-R68W (State)	North Reference:	True
Well:	State 1B-16H	Survey Calculation Method:	Minimum Curvature
Wellbore:	Hz		
Design:	Plan #1		

Planned Survey									
Measured Depth (ft)	Inclination (°)	Azimuth (°)	Vertical Depth (ft)	+N/-S (ft)	+E/-W (ft)	Vertical Section (ft)	Dogleg Rate (°/100ft)	Build Rate (°/100ft)	Comments / Formations
4,900.0	11.50	22.00	4,776.4	939.3	379.5	-379.5	1.00	-1.00	
5,000.0	10.50	22.00	4,874.6	957.0	386.7	-386.7	1.00	-1.00	
5,100.0	9.50	22.00	4,973.1	973.1	393.2	-393.2	1.00	-1.00	
5,200.0	8.50	22.00	5,071.9	987.6	399.0	-399.0	1.00	-1.00	
5,300.0	7.50	22.00	5,170.9	1,000.5	404.2	-404.2	1.00	-1.00	
5,400.0	6.50	22.00	5,270.1	1,011.8	408.8	-408.8	1.00	-1.00	
5,500.0	5.50	22.00	5,369.6	1,021.5	412.7	-412.7	1.00	-1.00	
5,600.0	4.50	22.00	5,469.2	1,029.6	416.0	-416.0	1.00	-1.00	
5,700.0	3.50	22.00	5,569.0	1,036.0	418.6	-418.6	1.00	-1.00	
5,800.0	2.50	22.00	5,668.8	1,040.9	420.5	-420.5	1.00	-1.00	
5,900.0	1.50	22.00	5,768.8	1,044.1	421.9	-421.9	1.00	-1.00	
6,000.0	0.50	22.00	5,868.7	1,045.7	422.5	-422.5	1.00	-1.00	
6,050.0	0.00	0.00	5,918.7	1,046.0	422.6	-422.6	1.00	-1.00	EOD; Inc=0°
6,100.0	0.00	0.00	5,968.7	1,046.0	422.6	-422.6	0.00	0.00	
6,179.6	0.00	0.00	6,048.4	1,046.0	422.6	-422.6	0.00	0.00	Teepee Buttes (*if present)
6,200.0	0.00	0.00	6,068.7	1,046.0	422.6	-422.6	0.00	0.00	
6,300.0	0.00	0.00	6,168.7	1,046.0	422.6	-422.6	0.00	0.00	
6,400.0	0.00	0.00	6,268.7	1,046.0	422.6	-422.6	0.00	0.00	
6,500.0	0.00	0.00	6,368.7	1,046.0	422.6	-422.6	0.00	0.00	
6,533.8	0.00	0.00	6,402.6	1,046.0	422.6	-422.6	0.00	0.00	Start 8° build @ 6533' MD
6,600.0	5.29	270.00	6,468.6	1,046.0	419.5	-419.5	8.00	8.00	
6,700.0	13.29	270.00	6,567.2	1,046.0	403.4	-403.4	8.00	8.00	
6,800.0	21.29	270.00	6,662.7	1,046.0	373.7	-373.7	8.00	8.00	
6,900.0	29.29	270.00	6,753.0	1,046.0	331.0	-331.0	8.00	8.00	
7,000.0	37.29	270.00	6,836.5	1,046.0	276.2	-276.2	8.00	8.00	
7,100.0	45.29	270.00	6,911.6	1,045.9	210.2	-210.2	8.00	8.00	
7,200.0	53.29	270.00	6,976.7	1,045.9	134.5	-134.5	8.00	8.00	
7,221.0	54.97	270.00	6,989.1	1,045.9	117.5	-117.5	8.00	8.00	Sharon Springs
7,300.0	61.29	270.00	7,030.7	1,045.9	50.4	-50.4	8.00	8.00	
7,359.1	66.02	270.00	7,057.0	1,045.9	-2.6	2.6	8.00	8.00	Niobrara
7,400.0	69.29	270.00	7,072.5	1,045.9	-40.4	40.4	8.00	8.00	
7,500.0	77.29	270.00	7,101.2	1,045.9	-136.1	136.1	8.00	8.00	
7,551.5	81.42	270.00	7,110.7	1,045.9	-186.7	186.7	8.00	8.00	B Chalk
7,600.0	85.29	270.00	7,116.3	1,045.9	-234.8	234.8	8.00	8.00	
7,671.3	91.00	270.00	7,118.7	1,045.9	-306.1	306.1	8.00	8.00	LP @ 7118' TVD; 91°
7,700.0	91.00	270.00	7,118.2	1,045.9	-334.8	334.8	0.00	0.00	
7,800.0	91.00	270.00	7,116.4	1,045.9	-434.8	434.8	0.00	0.00	
7,900.0	91.00	270.00	7,114.7	1,045.9	-534.7	534.7	0.00	0.00	
8,000.0	91.00	270.00	7,112.9	1,045.9	-634.7	634.7	0.00	0.00	
8,100.0	91.00	270.00	7,111.2	1,045.9	-734.7	734.7	0.00	0.00	
8,200.0	91.00	270.00	7,109.4	1,045.9	-834.7	834.7	0.00	0.00	
8,300.0	91.00	270.00	7,107.7	1,045.9	-934.7	934.7	0.00	0.00	
8,400.0	91.00	270.00	7,105.9	1,045.9	-1,034.7	1,034.7	0.00	0.00	
8,500.0	91.00	270.00	7,104.2	1,045.9	-1,134.6	1,134.6	0.00	0.00	
8,600.0	91.00	270.00	7,102.4	1,045.9	-1,234.6	1,234.6	0.00	0.00	
8,700.0	91.00	270.00	7,100.7	1,045.9	-1,334.6	1,334.6	0.00	0.00	
8,800.0	91.00	270.00	7,099.0	1,045.9	-1,434.6	1,434.6	0.00	0.00	
8,900.0	91.00	270.00	7,097.2	1,045.9	-1,534.6	1,534.6	0.00	0.00	
9,000.0	91.00	270.00	7,095.5	1,045.9	-1,634.6	1,634.6	0.00	0.00	
9,100.0	91.00	270.00	7,093.7	1,045.9	-1,734.6	1,734.6	0.00	0.00	
9,200.0	91.00	270.00	7,092.0	1,045.9	-1,834.5	1,834.5	0.00	0.00	
9,300.0	91.00	270.00	7,090.2	1,045.9	-1,934.5	1,934.5	0.00	0.00	

Planning Report

Database:	USA EDM 5000 Multi Users DB	Local Co-ordinate Reference:	Well State 1B-16H
Company:	EnCana Oil & Gas (USA) Inc	TVD Reference:	WELL @ 5039.0ft (Original Well Elev)
Project:	DJ Wattenberg	MD Reference:	WELL @ 5039.0ft (Original Well Elev)
Site:	S16-T3N-R68W (State)	North Reference:	True
Well:	State 1B-16H	Survey Calculation Method:	Minimum Curvature
Wellbore:	Hz		
Design:	Plan #1		

Planned Survey

Measured Depth (ft)	Inclination (°)	Azimuth (°)	Vertical Depth (ft)	+N/-S (ft)	+E/-W (ft)	Vertical Section (ft)	Dogleg Rate (°/100ft)	Build Rate (°/100ft)	Comments / Formations
9,400.0	91.00	270.00	7,088.5	1,045.9	-2,034.5	2,034.5	0.00	0.00	
9,500.0	91.00	270.00	7,086.7	1,045.9	-2,134.5	2,134.5	0.00	0.00	
9,600.0	91.00	270.00	7,085.0	1,045.9	-2,234.5	2,234.5	0.00	0.00	
9,700.0	91.00	270.00	7,083.2	1,045.9	-2,334.5	2,334.5	0.00	0.00	
9,800.0	91.00	270.00	7,081.5	1,045.9	-2,434.5	2,434.5	0.00	0.00	
9,900.0	91.00	270.00	7,079.8	1,045.9	-2,534.4	2,534.4	0.00	0.00	
10,000.0	91.00	270.00	7,078.0	1,045.9	-2,634.4	2,634.4	0.00	0.00	
10,100.0	91.00	270.00	7,076.3	1,045.9	-2,734.4	2,734.4	0.00	0.00	
10,200.0	91.00	270.00	7,074.5	1,045.9	-2,834.4	2,834.4	0.00	0.00	
10,300.0	91.00	270.00	7,072.8	1,045.9	-2,934.4	2,934.4	0.00	0.00	
10,400.0	91.00	270.00	7,071.0	1,045.9	-3,034.4	3,034.4	0.00	0.00	
10,500.0	91.00	270.00	7,069.3	1,045.9	-3,134.3	3,134.3	0.00	0.00	
10,600.0	91.00	270.00	7,067.5	1,045.9	-3,234.3	3,234.3	0.00	0.00	
10,700.0	91.00	270.00	7,065.8	1,045.9	-3,334.3	3,334.3	0.00	0.00	
10,800.0	91.00	270.00	7,064.1	1,045.9	-3,434.3	3,434.3	0.00	0.00	
10,900.0	91.00	270.00	7,062.3	1,045.9	-3,534.3	3,534.3	0.00	0.00	
11,000.0	91.00	270.00	7,060.6	1,045.9	-3,634.3	3,634.3	0.00	0.00	
11,100.0	91.00	270.00	7,058.8	1,045.9	-3,734.3	3,734.3	0.00	0.00	
11,200.0	91.00	270.00	7,057.1	1,045.9	-3,834.2	3,834.2	0.00	0.00	
11,300.0	91.00	270.00	7,055.3	1,045.9	-3,934.2	3,934.2	0.00	0.00	
11,400.0	91.00	270.00	7,053.6	1,045.9	-4,034.2	4,034.2	0.00	0.00	
11,500.0	91.00	270.00	7,051.8	1,045.9	-4,134.2	4,134.2	0.00	0.00	
11,600.0	91.00	270.00	7,050.1	1,045.9	-4,234.2	4,234.2	0.00	0.00	
11,700.0	91.00	270.00	7,048.3	1,045.9	-4,334.2	4,334.2	0.00	0.00	
11,721.4	91.00	270.00	7,048.0	1,045.9	-4,355.5	4,355.5	0.00	0.00	TD at 11721.4 - State 1B-16H PBHL

Targets

Target Name	Dip Angle (°)	Dip Dir. (°)	TVD (ft)	+N/-S (ft)	+E/-W (ft)	Northing (ft)	Easting (ft)	Latitude	Longitude
- hit/miss target									
- Shape									
State 1B-16H PBHL	0.00	0.00	7,048.0	1,045.9	-4,355.5	1,327,658.37	3,135,180.93	40.231800	-105.015850
- plan hits target center									
- Point									

Formations

Measured Depth (ft)	Vertical Depth (ft)	Name	Lithology	Dip (°)	Dip Direction (°)
4,150.0	4,044.0	Sussex		-1.00	270.00
4,719.7	4,594.0	Shannon		-1.00	270.00
6,179.6	6,041.0	Teepee Buttes (*if present)		-1.00	270.00
7,221.0	6,987.0	Sharon Springs		-1.00	270.00
7,359.1	7,057.0	Niobrara		-1.00	270.00
7,551.5	7,114.0	B Chalk		-1.00	270.00

Planning Report

Database:	USA EDM 5000 Multi Users DB	Local Co-ordinate Reference:	Well State 1B-16H
Company:	EnCana Oil & Gas (USA) Inc	TVD Reference:	WELL @ 5039.0ft (Original Well Elev)
Project:	DJ Wattenberg	MD Reference:	WELL @ 5039.0ft (Original Well Elev)
Site:	S16-T3N-R68W (State)	North Reference:	True
Well:	State 1B-16H	Survey Calculation Method:	Minimum Curvature
Wellbore:	Hz		
Design:	Plan #1		

Plan Annotations

Measured Depth (ft)	Vertical Depth (ft)	Local Coordinates		Comment
		+N/-S (ft)	+E/-W (ft)	
200.0	200.0	0.0	0.0	KOP @ 200'
1,700.0	1,682.9	181.0	73.1	EOB; Inc=15°
4,550.0	4,435.8	864.9	349.5	Start Drop -1.00
6,050.0	5,918.7	1,046.0	422.6	EOD; Inc=0°
6,533.8	6,402.6	1,046.0	422.6	Start 8° build @ 6533' MD
7,671.3	7,118.7	1,045.9	-306.1	LP @ 7118' TVD; 91°
11,721.4	7,048.0	1,045.9	-4,355.5	TD at 11721.4

EnCana Oil & Gas (USA) Inc

DJ Wattenberg

S16-T3N-R68W (State)

State 1B-16H

Hz

Plan #1

Anticollision Report

14 December, 2012

Anticollision Report

Company:	EnCana Oil & Gas (USA) Inc	Local Co-ordinate Reference:	Well State 1B-16H
Project:	DJ Wattenberg	TVD Reference:	WELL @ 5039.0ft (Original Well Elev)
Reference Site:	S16-T3N-R68W (State)	MD Reference:	WELL @ 5039.0ft (Original Well Elev)
Site Error:	0.0ft	North Reference:	True
Reference Well:	State 1B-16H	Survey Calculation Method:	Minimum Curvature
Well Error:	0.0ft	Output errors are at	2.00 sigma
Reference Wellbore	Hz	Database:	USA EDM 5000 Multi Users DB
Reference Design:	Plan #1	Offset TVD Reference:	Offset Datum

Reference	Plan #1		
Filter type:	NO GLOBAL FILTER: Using user defined selection & filtering criteria		
Interpolation Method:	MD Interval 100.0ft	Error Model:	Systematic Ellipse
Depth Range:	Unlimited	Scan Method:	Closest Approach 3D
Results Limited by:	Maximum center-center distance of 500.0ft	Error Surface:	Elliptical Conic
Warning Levels Evaluated at:	2.00 Sigma		

Survey Tool Program	Date	12/14/2012		
From (ft)	To (ft)	Survey (Wellbore)	Tool Name	Description
0.0	11,721.4	Plan #1 (Hz)	MWD	Geolink MWD

Summary						
Site Name	Reference Measured Depth (ft)	Offset Measured Depth (ft)	Distance Between Centres (ft)	Distance Between Ellipses (ft)	Separation Factor	Warning
Offset Well - Wellbore - Design						
S16-T3N-R68W (State)						
State 1C-16H - Hz - Plan #1	200.0	200.0	10.9	10.3	16.742	CC, ES
State 1C-16H - Hz - Plan #1	11,721.4	11,870.1	398.2	204.9	2.060	SF
State 1D-16H - Hz - Plan #1	200.0	200.0	21.9	21.2	33.485	CC, ES
State 1D-16H - Hz - Plan #1	1,600.0	1,603.6	101.3	94.4	14.608	SF
State 1E-16H - Hz - Plan #1	200.0	200.0	32.8	32.1	50.227	CC, ES
State 1E-16H - Hz - Plan #1	700.0	699.4	53.6	51.2	22.367	SF
State 1F-16H - Hz - Plan #1	200.0	200.0	40.1	39.4	61.388	CC, ES
State 1F-16H - Hz - Plan #1	600.0	598.7	55.1	53.0	26.822	SF
State 1G-16H - Hz - Plan #1	200.0	200.0	51.0	50.3	78.131	CC, ES
State 1G-16H - Hz - Plan #1	700.0	695.0	82.5	80.1	34.243	SF
State 1H-16H - Hz - Plan #1	200.0	200.0	61.9	61.3	94.866	CC, ES
State 1H-16H - Hz - Plan #1	700.0	692.1	101.5	99.1	42.184	SF

Anticollision Report

Company:	EnCana Oil & Gas (USA) Inc	Local Co-ordinate Reference:	Well State 1B-16H
Project:	DJ Wattenberg	TVD Reference:	WELL @ 5039.0ft (Original Well Elev)
Reference Site:	S16-T3N-R68W (State)	MD Reference:	WELL @ 5039.0ft (Original Well Elev)
Site Error:	0.0ft	North Reference:	True
Reference Well:	State 1B-16H	Survey Calculation Method:	Minimum Curvature
Well Error:	0.0ft	Output errors are at	2.00 sigma
Reference Wellbore	Hz	Database:	USA EDM 5000 Multi Users DB
Reference Design:	Plan #1	Offset TVD Reference:	Offset Datum

Offset Design S16-T3N-R68W (State) - State 1C-16H - Hz - Plan #1													Offset Site Error:	0.0 ft
Survey Program: 0-MWD													Offset Well Error:	0.0 ft
Reference		Offset		Semi Major Axis			Distance							Warning
Measured Depth (ft)	Vertical Depth (ft)	Measured Depth (ft)	Vertical Depth (ft)	Reference (ft)	Offset (ft)	Highside Toolface (°)	Offset Wellbore Centre +N/-S (ft)	+E/-W (ft)	Between Centres (ft)	Between Ellipses (ft)	Total Uncertainty Axis	Separation Factor		
0.0	0.0	0.0	0.0	0.0	0.0	180.00	-10.9	0.0	10.9					
100.0	100.0	100.0	100.0	0.2	0.2	180.00	-10.9	0.0	10.9	10.6	0.30	35.986		
200.0	200.0	200.0	200.0	0.3	0.3	180.00	-10.9	0.0	10.9	10.3	0.65	16.742 CC, ES		
300.0	300.0	300.0	300.0	0.5	0.5	159.59	-10.9	0.0	11.7	10.7	1.00	11.721		
400.0	400.0	400.2	400.2	0.7	0.7	161.68	-10.2	0.4	13.4	12.1	1.35	9.944		
500.0	499.9	500.4	500.3	0.9	0.9	162.38	-7.9	1.8	15.2	13.5	1.70	8.953		
600.0	599.7	600.6	600.5	1.1	1.0	162.13	-4.1	4.0	17.1	15.1	2.06	8.336		
700.0	699.4	700.9	700.6	1.3	1.2	161.19	1.2	7.1	19.1	16.7	2.41	7.925		
800.0	798.9	801.2	800.5	1.5	1.5	159.79	7.9	11.1	21.2	18.4	2.78	7.635		
900.0	898.3	901.5	900.4	1.8	1.7	158.06	16.2	16.0	23.4	20.3	3.16	7.421		
1,000.0	997.4	1,001.8	1,000.1	2.0	1.9	156.12	26.1	21.8	25.8	22.2	3.56	7.251		
1,100.0	1,096.3	1,102.2	1,099.6	2.3	2.2	154.04	37.4	28.5	28.3	24.3	3.98	7.107		
1,200.0	1,194.9	1,202.6	1,198.8	2.7	2.5	151.88	50.2	36.0	30.9	26.5	4.44	6.974		
1,300.0	1,293.3	1,303.0	1,297.8	3.0	2.8	149.70	64.5	44.4	33.8	28.8	4.94	6.844		
1,400.0	1,391.2	1,403.4	1,396.6	3.4	3.2	147.52	80.3	53.8	36.8	31.3	5.48	6.712		
1,500.0	1,488.9	1,503.8	1,495.0	3.8	3.5	145.38	97.6	63.9	40.0	33.9	6.08	6.577		
1,600.0	1,586.1	1,603.7	1,592.7	4.2	3.9	144.17	115.5	74.5	44.1	37.4	6.69	6.591		
1,700.0	1,682.9	1,703.6	1,690.4	4.7	4.3	144.36	133.4	85.0	49.6	42.4	7.26	6.834		
1,800.0	1,779.5	1,803.4	1,788.0	5.1	4.7	145.06	151.3	95.6	55.8	48.0	7.81	7.153		
1,900.0	1,876.1	1,903.2	1,885.6	5.6	5.1	145.62	169.2	106.1	62.1	53.7	8.36	7.429		
2,000.0	1,972.7	2,003.0	1,983.2	6.1	5.5	146.07	187.1	116.6	68.3	59.4	8.91	7.669		
2,100.0	2,069.3	2,102.8	2,080.8	6.6	5.8	146.45	204.9	127.2	74.6	65.1	9.46	7.881		
2,200.0	2,165.9	2,202.6	2,178.5	7.0	6.2	146.77	222.8	137.7	80.8	70.8	10.02	8.068		
2,300.0	2,262.5	2,302.4	2,276.1	7.5	6.6	147.05	240.7	148.2	87.1	76.5	10.57	8.234		
2,400.0	2,359.1	2,402.2	2,373.7	8.0	7.0	147.29	258.6	158.7	93.3	82.2	11.13	8.384		
2,500.0	2,455.7	2,502.0	2,471.3	8.5	7.4	147.50	276.5	169.3	99.6	87.9	11.69	8.518		
2,600.0	2,552.3	2,601.8	2,569.0	8.9	7.8	147.68	294.3	179.8	105.8	93.6	12.25	8.640		
2,700.0	2,648.8	2,701.6	2,666.6	9.4	8.2	147.84	312.2	190.3	112.1	99.3	12.80	8.751		
2,800.0	2,745.4	2,801.4	2,764.2	9.9	8.6	147.99	330.1	200.9	118.3	104.9	13.36	8.853		
2,900.0	2,842.0	2,901.2	2,861.8	10.4	9.0	148.12	348.0	211.4	124.6	110.6	13.93	8.946		
3,000.0	2,938.6	3,001.0	2,959.5	10.9	9.4	148.24	365.8	221.9	130.8	116.3	14.49	9.031		
3,100.0	3,035.2	3,100.8	3,057.1	11.4	9.8	148.35	383.7	232.5	137.1	122.0	15.05	9.110		
3,200.0	3,131.8	3,200.6	3,154.7	11.8	10.2	148.44	401.6	243.0	143.3	127.7	15.61	9.183		
3,300.0	3,228.4	3,300.4	3,252.3	12.3	10.6	148.53	419.5	253.5	149.6	133.4	16.17	9.251		
3,400.0	3,325.0	3,400.2	3,349.9	12.8	11.0	148.62	437.4	264.1	155.8	139.1	16.73	9.314		
3,500.0	3,421.6	3,500.0	3,447.6	13.3	11.4	148.69	455.2	274.6	162.1	144.8	17.30	9.373		
3,600.0	3,518.2	3,599.8	3,545.2	13.8	11.8	148.77	473.1	285.1	168.4	150.5	17.86	9.428		
3,700.0	3,614.8	3,699.6	3,642.8	14.3	12.2	148.83	491.0	295.7	174.6	156.2	18.42	9.479		
3,800.0	3,711.4	3,799.4	3,740.4	14.7	12.6	148.89	508.9	306.2	180.9	161.9	18.98	9.528		
3,900.0	3,808.0	3,899.2	3,838.1	15.2	13.0	148.95	526.8	316.7	187.1	167.6	19.55	9.573		
4,000.0	3,904.6	3,999.0	3,935.7	15.7	13.4	149.00	544.6	327.3	193.4	173.3	20.11	9.616		
4,100.0	4,001.1	4,098.9	4,033.3	16.2	13.8	149.05	562.5	337.8	199.6	179.0	20.67	9.657		
4,200.0	4,097.7	4,198.7	4,130.9	16.7	14.2	149.10	580.4	348.3	205.9	184.7	21.24	9.695		
4,300.0	4,194.3	4,298.5	4,228.6	17.2	14.6	149.14	598.3	358.8	212.2	190.4	21.80	9.731		
4,400.0	4,290.9	4,395.6	4,323.7	17.6	15.0	149.30	615.1	368.7	219.0	196.7	22.31	9.816		
4,500.0	4,387.5	4,492.3	4,418.8	18.1	15.3	149.71	630.4	377.8	227.1	204.4	22.73	9.995		
4,600.0	4,484.2	4,588.8	4,513.9	18.6	15.7	150.33	644.3	386.0	236.4	213.4	23.06	10.255		
4,700.0	4,581.2	4,685.1	4,609.1	19.0	16.0	151.00	656.9	393.4	245.8	222.4	23.34	10.527		
4,800.0	4,678.6	4,781.3	4,704.4	19.5	16.2	151.65	668.0	399.9	254.9	231.3	23.60	10.799		
4,900.0	4,776.4	4,877.3	4,799.8	19.9	16.5	152.29	677.7	405.7	263.9	240.1	23.84	11.072		
5,000.0	4,874.6	4,973.2	4,895.2	20.2	16.7	152.93	686.1	410.6	272.7	248.7	24.04	11.346		
5,100.0	4,973.1	5,069.0	4,990.6	20.6	16.9	153.56	693.0	414.7	281.4	257.2	24.22	11.620		

CC - Min centre to center distance or convergent point, SF - min separation factor, ES - min ellipse separation

Anticollision Report

Company:	EnCana Oil & Gas (USA) Inc	Local Co-ordinate Reference:	Well State 1B-16H
Project:	DJ Wattenberg	TVD Reference:	WELL @ 5039.0ft (Original Well Elev)
Reference Site:	S16-T3N-R68W (State)	MD Reference:	WELL @ 5039.0ft (Original Well Elev)
Site Error:	0.0ft	North Reference:	True
Reference Well:	State 1B-16H	Survey Calculation Method:	Minimum Curvature
Well Error:	0.0ft	Output errors are at	2.00 sigma
Reference Wellbore	Hz	Database:	USA EDM 5000 Multi Users DB
Reference Design:	Plan #1	Offset TVD Reference:	Offset Datum

Offset Design S16-T3N-R68W (State) - State 1C-16H - Hz - Plan #1													Offset Site Error:	0.0 ft
Survey Program: 0-MWD													Offset Well Error:	0.0 ft
Reference		Offset		Semi Major Axis			Distance				Total		Warning	
Measured Depth (ft)	Vertical Depth (ft)	Measured Depth (ft)	Vertical Depth (ft)	Reference (ft)	Offset (ft)	Highside Toolface (°)	Offset Wellbore Centre +N/-S (ft)	+E/-W (ft)	Between Centres (ft)	Between Ellipses (ft)	Uncertainty Axis	Separation Factor		
5,200.0	5,071.9	5,164.7	5,086.1	20.9	17.1	154.18	698.6	418.0	289.9	265.6	24.37	11.895		
5,300.0	5,170.9	5,260.2	5,181.5	21.1	17.2	154.81	702.8	420.4	298.3	273.8	24.51	12.171		
5,400.0	5,270.1	5,355.6	5,276.8	21.4	17.3	155.43	705.6	422.1	306.5	281.9	24.62	12.448		
5,500.0	5,369.6	5,450.9	5,372.1	21.6	17.4	156.05	707.1	423.0	314.6	289.8	24.72	12.726		
5,600.0	5,469.2	5,548.0	5,469.2	21.8	17.5	156.67	707.3	423.1	322.3	297.5	24.81	12.994		
5,700.0	5,569.0	5,647.8	5,569.0	22.0	17.6	157.18	707.3	423.1	328.7	303.8	24.93	13.188		
5,800.0	5,668.8	5,747.6	5,668.8	22.1	17.7	157.55	707.3	423.1	333.6	308.5	25.09	13.297		
5,900.0	5,768.8	5,847.6	5,768.8	22.3	17.8	157.78	707.3	423.1	336.8	311.5	25.28	13.322		
6,000.0	5,868.7	5,947.5	5,868.7	22.4	17.9	157.90	707.3	423.1	338.4	312.9	25.51	13.267		
6,100.0	5,968.7	6,047.5	5,968.7	22.4	18.0	179.92	707.3	423.1	338.6	301.1	37.57	9.013		
6,200.0	6,068.7	6,147.5	6,068.7	22.5	18.1	179.92	707.3	423.1	338.6	300.9	37.77	8.965		
6,300.0	6,168.7	6,247.5	6,168.7	22.6	18.2	179.92	707.3	423.1	338.6	300.6	37.98	8.917		
6,400.0	6,268.7	6,347.5	6,268.7	22.7	18.3	179.92	707.3	423.1	338.6	300.4	38.18	8.869		
6,500.0	6,368.7	6,447.5	6,368.7	22.8	18.4	179.92	707.3	423.1	338.6	300.2	38.39	8.821		
6,541.0	6,409.7	6,488.5	6,409.7	22.8	18.5	-90.21	707.3	423.1	338.6	311.6	27.07	12.508		
6,600.0	6,468.6	6,547.4	6,468.6	22.8	18.5	-90.60	707.3	423.1	338.6	311.3	27.33	12.390		
6,700.0	6,567.2	6,646.1	6,567.2	22.8	18.6	-93.24	707.3	423.1	339.2	311.0	28.21	12.024		
6,800.0	6,662.7	6,745.1	6,662.7	22.7	18.7	-97.63	707.3	421.0	341.9	312.6	29.34	11.655		
6,900.0	6,753.0	6,850.0	6,753.0	22.6	18.7	-102.18	707.3	405.4	347.1	317.1	29.98	11.576		
7,000.0	6,836.5	6,959.9	6,836.5	22.5	18.6	-106.48	707.3	373.0	354.3	324.3	29.94	11.832		
7,100.0	6,911.6	7,075.3	6,911.6	22.4	18.4	-110.42	707.3	322.1	362.8	333.6	29.24	12.406		
7,200.0	6,976.7	7,196.6	6,976.7	22.3	18.2	-113.90	707.3	251.5	372.0	343.8	28.11	13.231		
7,300.0	7,030.7	7,323.7	7,030.7	22.3	18.1	-116.83	707.3	160.9	380.8	353.9	26.98	14.117		
7,400.0	7,072.5	7,456.1	7,072.5	22.5	18.1	-119.12	707.3	51.2	388.6	362.1	26.46	14.684		
7,500.0	7,101.2	7,593.1	7,101.2	22.8	18.4	-120.72	707.3	-74.4	394.3	367.1	27.24	14.473		
7,600.0	7,116.3	7,733.0	7,116.3	23.3	19.3	-121.55	707.3	-211.0	397.5	367.8	29.66	13.401		
7,700.0	7,118.2	7,860.7	7,118.2	24.1	20.8	-121.68	707.3	-338.4	397.9	364.8	33.10	12.023		
7,800.0	7,116.4	7,960.7	7,116.4	25.2	22.3	-121.68	707.3	-438.4	397.9	361.8	36.10	11.024		
7,900.0	7,114.7	8,060.7	7,114.7	26.5	24.0	-121.68	707.3	-538.4	397.9	358.6	39.31	10.122		
8,000.0	7,112.9	8,160.7	7,112.9	28.0	25.8	-121.68	707.3	-638.4	397.9	355.2	42.70	9.319		
8,100.0	7,111.2	8,260.7	7,111.2	29.7	27.8	-121.68	707.3	-738.3	397.9	351.7	46.23	8.608		
8,200.0	7,109.4	8,360.7	7,109.4	31.5	29.8	-121.68	707.3	-838.3	398.0	348.1	49.86	7.981		
8,300.0	7,107.7	8,460.7	7,107.7	33.5	31.9	-121.68	707.3	-938.3	398.0	344.4	53.58	7.427		
8,400.0	7,105.9	8,560.7	7,105.9	35.5	34.1	-121.68	707.3	-1,038.3	398.0	340.6	57.37	6.936		
8,500.0	7,104.2	8,660.7	7,104.2	37.6	36.3	-121.68	707.3	-1,138.3	398.0	336.7	61.22	6.501		
8,600.0	7,102.4	8,760.7	7,102.4	39.7	38.5	-121.68	707.2	-1,238.3	398.0	332.9	65.11	6.112		
8,700.0	7,100.7	8,860.7	7,100.7	41.9	40.8	-121.68	707.2	-1,338.3	398.0	328.9	69.04	5.765		
8,800.0	7,099.0	8,960.7	7,099.0	44.1	43.1	-121.67	707.2	-1,438.2	398.0	325.0	73.00	5.452		
8,900.0	7,097.2	9,060.7	7,097.2	46.4	45.4	-121.67	707.2	-1,538.2	398.0	321.0	76.98	5.169		
9,000.0	7,095.5	9,160.7	7,095.5	48.6	47.7	-121.67	707.2	-1,638.2	398.0	317.0	81.00	4.914		
9,100.0	7,093.7	9,260.7	7,093.7	50.9	50.0	-121.67	707.2	-1,738.2	398.0	313.0	85.03	4.681		
9,200.0	7,092.0	9,360.7	7,092.0	53.2	52.4	-121.67	707.2	-1,838.2	398.0	308.9	89.07	4.468		
9,300.0	7,090.2	9,460.7	7,090.2	55.5	54.7	-121.67	707.2	-1,938.2	398.0	304.8	93.14	4.273		
9,400.0	7,088.5	9,560.7	7,088.5	57.9	57.1	-121.67	707.2	-2,038.1	398.0	300.8	97.21	4.094		
9,500.0	7,086.7	9,660.7	7,086.7	60.2	59.5	-121.67	707.2	-2,138.1	398.0	296.7	101.30	3.929		
9,600.0	7,085.0	9,760.7	7,085.0	62.6	61.9	-121.67	707.2	-2,238.1	398.0	292.6	105.40	3.776		
9,700.0	7,083.2	9,860.7	7,083.2	64.9	64.3	-121.67	707.2	-2,338.1	398.0	288.5	109.51	3.634		
9,800.0	7,081.5	9,960.7	7,081.5	67.3	66.7	-121.67	707.2	-2,438.1	398.0	284.4	113.62	3.503		
9,900.0	7,079.8	10,060.7	7,079.8	69.7	69.1	-121.67	707.2	-2,538.1	398.0	280.3	117.74	3.380		
10,000.0	7,078.0	10,160.7	7,078.0	72.1	71.5	-121.67	707.2	-2,638.1	398.0	276.1	121.87	3.266		
10,100.0	7,076.3	10,260.7	7,076.3	74.5	73.9	-121.67	707.2	-2,738.0	398.0	272.0	126.01	3.159		
10,200.0	7,074.5	10,360.7	7,074.5	76.8	76.3	-121.67	707.2	-2,838.0	398.0	267.9	130.14	3.058		

CC - Min centre to center distance or convergent point, SF - min separation factor, ES - min ellipse separation

Anticollision Report

Company:	EnCana Oil & Gas (USA) Inc	Local Co-ordinate Reference:	Well State 1B-16H
Project:	DJ Wattenberg	TVD Reference:	WELL @ 5039.0ft (Original Well Elev)
Reference Site:	S16-T3N-R68W (State)	MD Reference:	WELL @ 5039.0ft (Original Well Elev)
Site Error:	0.0ft	North Reference:	True
Reference Well:	State 1B-16H	Survey Calculation Method:	Minimum Curvature
Well Error:	0.0ft	Output errors are at	2.00 sigma
Reference Wellbore	Hz	Database:	USA EDM 5000 Multi Users DB
Reference Design:	Plan #1	Offset TVD Reference:	Offset Datum

Offset Design S16-T3N-R68W (State) - State 1C-16H - Hz - Plan #1													Offset Site Error:	0.0 ft
Survey Program: 0-MWD													Offset Well Error:	0.0 ft
Reference		Offset		Semi Major Axis			Distance				Total		Warning	
Measured Depth (ft)	Vertical Depth (ft)	Measured Depth (ft)	Vertical Depth (ft)	Reference (ft)	Offset (ft)	Highside Toolface (°)	Offset Wellbore Centre +N/-S (ft)	+E/-W (ft)	Between Centres (ft)	Between Ellipses (ft)	Uncertainty Axis	Separation Factor		
10,300.0	7,072.8	10,460.7	7,281.7	79.2	78.7	-121.67	707.2	-2,938.0	398.0	263.7	134.29	2.964		
10,400.0	7,071.0	10,560.7	7,280.0	81.7	81.2	-121.67	707.2	-3,038.0	398.0	259.6	138.44	2.875		
10,500.0	7,069.3	10,660.7	7,278.2	84.1	83.6	-121.67	707.2	-3,138.0	398.0	255.4	142.59	2.791		
10,600.0	7,067.5	10,760.7	7,276.5	86.5	86.0	-121.67	707.2	-3,238.0	398.0	251.3	146.75	2.712		
10,700.0	7,065.8	10,860.7	7,274.7	88.9	88.4	-121.67	707.2	-3,337.9	398.0	247.1	150.91	2.638		
10,800.0	7,064.1	10,960.7	7,273.0	91.3	90.9	-121.67	707.1	-3,437.9	398.0	243.0	155.07	2.567		
10,900.0	7,062.3	11,060.7	7,271.2	93.7	93.3	-121.67	707.1	-3,537.9	398.0	238.8	159.24	2.500		
11,000.0	7,060.6	11,160.7	7,269.5	96.2	95.7	-121.67	707.1	-3,637.9	398.0	234.6	163.40	2.436		
11,100.0	7,058.8	11,260.7	7,267.8	98.6	98.2	-121.67	707.1	-3,737.9	398.0	230.5	167.57	2.375		
11,200.0	7,057.1	11,360.7	7,266.0	101.0	100.6	-121.67	707.1	-3,837.9	398.0	226.3	171.75	2.318		
11,300.0	7,055.3	11,460.7	7,264.3	103.5	103.1	-121.67	707.1	-3,937.9	398.0	222.1	175.92	2.263		
11,400.0	7,053.6	11,560.7	7,262.5	105.9	105.5	-121.67	707.1	-4,037.8	398.0	217.9	180.10	2.210		
11,500.0	7,051.8	11,660.7	7,260.8	108.3	108.0	-121.67	707.1	-4,137.8	398.0	213.8	184.28	2.160		
11,600.0	7,050.1	11,760.7	7,259.0	110.8	110.4	-121.67	707.1	-4,237.8	398.0	209.6	188.46	2.112		
11,700.0	7,048.3	11,860.7	7,257.3	113.2	112.9	-121.67	707.1	-4,337.8	398.1	205.4	192.64	2.066		
11,700.0	7,048.3	11,860.7	7,257.3	113.2	112.9	-121.67	707.1	-4,337.8	398.1	205.4	192.64	2.066		
11,721.4	7,048.0	11,870.1	7,257.1	113.7	113.1	-121.67	707.1	-4,347.2	398.2	204.9	193.29	2.060 SF		

Anticollision Report

Company:	EnCana Oil & Gas (USA) Inc	Local Co-ordinate Reference:	Well State 1B-16H
Project:	DJ Wattenberg	TVD Reference:	WELL @ 5039.0ft (Original Well Elev)
Reference Site:	S16-T3N-R68W (State)	MD Reference:	WELL @ 5039.0ft (Original Well Elev)
Site Error:	0.0ft	North Reference:	True
Reference Well:	State 1B-16H	Survey Calculation Method:	Minimum Curvature
Well Error:	0.0ft	Output errors are at	2.00 sigma
Reference Wellbore	Hz	Database:	USA EDM 5000 Multi Users DB
Reference Design:	Plan #1	Offset TVD Reference:	Offset Datum

Offset Design S16-T3N-R68W (State) - State 1D-16H - Hz - Plan #1													Offset Site Error:	0.0 ft
Survey Program: 0-MWD													Offset Well Error:	0.0 ft
Reference		Offset		Semi Major Axis		Distance		Total		Separation		Warning		
Measured Depth (ft)	Vertical Depth (ft)	Measured Depth (ft)	Vertical Depth (ft)	Reference (ft)	Offset (ft)	Highside Toolface (°)	Offset Wellbore Centre +N/-S (ft)	+E/-W (ft)	Between Centres (ft)	Between Ellipses (ft)	Uncertainty Axis			
0.0	0.0	0.0	0.0	0.0	0.0	-180.00	-21.9	0.0	21.9					
100.0	100.0	100.0	100.0	0.2	0.2	-180.00	-21.9	0.0	21.9	21.6	0.30	71.972		
200.0	200.0	200.0	200.0	0.3	0.3	-180.00	-21.9	0.0	21.9	21.2	0.65	33.485 CC, ES		
300.0	300.0	300.0	300.0	0.5	0.5	158.82	-21.9	0.0	22.7	21.7	1.00	22.627		
400.0	400.0	400.0	400.0	0.7	0.7	160.97	-21.9	0.0	25.1	23.8	1.35	18.598		
500.0	499.9	500.2	500.2	0.9	0.9	162.56	-21.3	0.7	28.7	26.9	1.70	16.840		
600.0	599.7	600.5	600.5	1.1	1.0	162.57	-19.5	2.6	32.6	30.5	2.05	15.865		
700.0	699.4	700.9	700.7	1.3	1.2	161.49	-16.6	5.9	36.9	34.5	2.41	15.312		
800.0	798.9	801.2	800.9	1.5	1.4	159.70	-12.6	10.5	41.7	38.9	2.78	15.007		
900.0	898.3	901.6	901.0	1.8	1.6	157.47	-7.3	16.4	47.0	43.8	3.16	14.852		
1,000.0	997.4	1,002.0	1,000.9	2.0	1.8	154.99	-0.9	23.7	52.8	49.2	3.57	14.783		
1,100.0	1,096.3	1,102.3	1,100.6	2.3	2.1	152.40	6.6	32.2	59.2	55.2	4.01	14.758		
1,200.0	1,194.9	1,202.7	1,200.0	2.7	2.4	149.80	15.3	42.0	66.2	61.8	4.49	14.747		
1,300.0	1,293.3	1,303.0	1,299.2	3.0	2.6	147.25	25.2	53.2	73.9	68.9	5.02	14.733		
1,400.0	1,391.2	1,403.3	1,398.1	3.4	3.0	144.80	36.2	65.6	82.3	76.7	5.60	14.706		
1,500.0	1,488.9	1,503.5	1,496.7	3.8	3.3	142.48	48.3	79.3	91.5	85.2	6.24	14.663		
1,600.0	1,586.1	1,603.6	1,594.8	4.2	3.7	140.29	61.6	94.3	101.3	94.4	6.94	14.608 SF		
1,700.0	1,682.9	1,703.0	1,692.0	4.7	4.0	138.69	75.3	109.8	112.3	104.6	7.66	14.665		
1,800.0	1,779.5	1,802.3	1,789.1	5.1	4.4	137.71	89.0	125.3	123.9	115.5	8.38	14.784		
1,900.0	1,876.1	1,901.6	1,886.2	5.6	4.8	136.90	102.7	140.7	135.6	126.5	9.12	14.871		
2,000.0	1,972.7	2,000.9	1,983.4	6.1	5.2	136.22	116.3	156.2	147.3	137.5	9.87	14.934		
2,100.0	2,069.3	2,100.2	2,080.5	6.6	5.6	135.63	130.0	171.7	159.1	148.4	10.62	14.980		
2,200.0	2,165.9	2,199.5	2,177.6	7.0	6.0	135.13	143.7	187.1	170.8	159.4	11.38	15.016		
2,300.0	2,262.5	2,298.8	2,274.7	7.5	6.4	134.69	157.4	202.6	182.6	170.4	12.14	15.042		
2,400.0	2,359.1	2,398.1	2,371.9	8.0	6.7	134.31	171.1	218.0	194.3	181.4	12.90	15.062		
2,500.0	2,455.7	2,497.4	2,469.0	8.5	7.1	133.97	184.7	233.5	206.1	192.4	13.67	15.077		
2,600.0	2,552.3	2,596.7	2,566.1	8.9	7.5	133.66	198.4	249.0	217.9	203.4	14.44	15.089		
2,700.0	2,648.8	2,696.0	2,663.3	9.4	7.9	133.39	212.1	264.4	229.7	214.5	15.21	15.097		
2,800.0	2,745.4	2,795.3	2,760.4	9.9	8.3	133.15	225.8	279.9	241.5	225.5	15.99	15.104		
2,900.0	2,842.0	2,894.6	2,857.5	10.4	8.7	132.92	239.5	295.4	253.2	236.5	16.76	15.108		
3,000.0	2,938.6	2,993.8	2,954.6	10.9	9.1	132.72	253.1	310.8	265.0	247.5	17.54	15.112		
3,100.0	3,035.2	3,093.1	3,051.8	11.4	9.5	132.53	266.8	326.3	276.8	258.5	18.32	15.114		
3,200.0	3,131.8	3,191.8	3,148.3	11.8	9.9	132.39	280.3	341.5	288.7	269.6	19.08	15.127		
3,300.0	3,228.4	3,289.6	3,244.3	12.3	10.3	132.52	292.8	355.6	300.9	281.2	19.78	15.121		
3,400.0	3,325.0	3,387.3	3,340.4	12.8	10.6	132.93	304.1	368.5	313.7	293.3	20.42	15.362		
3,500.0	3,421.6	3,484.7	3,436.6	13.3	10.9	133.59	314.4	380.1	327.0	306.0	20.99	15.580		
3,600.0	3,518.2	3,581.8	3,532.8	13.8	11.2	134.47	323.5	390.4	340.8	319.3	21.49	15.862		
3,700.0	3,614.8	3,678.6	3,628.8	14.3	11.5	135.52	331.6	399.5	355.3	333.4	21.92	16.209		
3,800.0	3,711.4	3,775.0	3,724.6	14.7	11.7	136.73	338.5	407.3	370.5	348.2	22.29	16.624		
3,900.0	3,808.0	3,871.0	3,820.2	15.2	11.9	138.06	344.3	413.9	386.4	363.9	22.59	17.109		
4,000.0	3,904.6	3,966.5	3,915.4	15.7	12.1	139.50	349.1	419.3	403.3	380.4	22.83	17.667		
4,100.0	4,001.1	4,061.5	4,010.2	16.2	12.2	141.01	352.8	423.5	421.0	398.0	23.01	18.300		
4,200.0	4,097.7	4,155.8	4,104.5	16.7	12.4	142.58	355.4	426.4	439.8	416.7	23.13	19.011		
4,300.0	4,194.3	4,249.6	4,198.2	17.2	12.5	144.18	357.0	428.2	459.6	436.4	23.21	19.804		
4,400.0	4,290.9	4,342.6	4,291.2	17.6	12.6	145.81	357.6	428.9	480.6	457.4	23.25	20.675		

Anticollision Report

Company:	EnCana Oil & Gas (USA) Inc	Local Co-ordinate Reference:	Well State 1B-16H
Project:	DJ Wattenberg	TVD Reference:	WELL @ 5039.0ft (Original Well Elev)
Reference Site:	S16-T3N-R68W (State)	MD Reference:	WELL @ 5039.0ft (Original Well Elev)
Site Error:	0.0ft	North Reference:	True
Reference Well:	State 1B-16H	Survey Calculation Method:	Minimum Curvature
Well Error:	0.0ft	Output errors are at	2.00 sigma
Reference Wellbore	Hz	Database:	USA EDM 5000 Multi Users DB
Reference Design:	Plan #1	Offset TVD Reference:	Offset Datum

Offset Design S16-T3N-R68W (State) - State 1E-16H - Hz - Plan #1													Offset Site Error:	0.0 ft
Survey Program: 0-MWD													Offset Well Error:	0.0 ft
Reference		Offset		Semi Major Axis		Distance		Total		Separation		Warning		
Measured Depth (ft)	Vertical Depth (ft)	Measured Depth (ft)	Vertical Depth (ft)	Reference (ft)	Offset (ft)	Highside Toolface (°)	Offset Wellbore Centre +N/-S (ft)	+E/-W (ft)	Between Centres (ft)	Between Ellipses (ft)	Uncertainty Axis			
0.0	0.0	0.0	0.0	0.0	0.0	180.00	-32.8	0.0	32.8					
100.0	100.0	100.0	100.0	0.2	0.2	180.00	-32.8	0.0	32.8	32.5	0.30	107.959		
200.0	200.0	200.0	200.0	0.3	0.3	180.00	-32.8	0.0	32.8	32.1	0.65	50.227 CC, ES		
300.0	300.0	300.0	300.0	0.5	0.5	158.55	-32.8	0.0	33.6	32.6	1.00	33.534		
400.0	400.0	400.0	400.0	0.7	0.7	160.07	-32.8	0.0	36.0	34.7	1.35	26.678		
500.0	499.9	499.9	499.9	0.9	0.8	162.18	-32.8	0.0	40.2	38.5	1.70	23.625		
600.0	599.7	599.7	599.7	1.1	1.0	164.49	-32.8	0.0	46.0	44.0	2.05	22.457		
700.0	699.4	699.4	699.4	1.3	1.2	166.71	-32.8	0.0	53.6	51.2	2.40	22.367 SF		
800.0	798.9	798.9	798.9	1.5	1.4	168.70	-32.8	0.0	63.0	60.3	2.74	22.954		
900.0	898.3	898.3	898.3	1.8	1.5	170.39	-32.8	0.0	74.1	71.0	3.09	23.992		
1,000.0	997.4	997.4	997.4	2.0	1.7	171.81	-32.8	0.0	87.0	83.6	3.43	25.347		
1,100.0	1,096.3	1,096.9	1,096.9	2.3	1.9	172.55	-32.7	0.8	101.4	97.6	3.78	26.842		
1,200.0	1,194.9	1,196.3	1,196.3	2.7	2.1	172.40	-32.5	3.3	116.9	112.8	4.12	28.344		
1,300.0	1,293.3	1,295.7	1,295.5	3.0	2.2	171.67	-32.1	7.6	133.5	129.1	4.48	29.831		
1,400.0	1,391.2	1,394.8	1,394.5	3.4	2.4	170.58	-31.5	13.5	151.3	146.5	4.84	31.283		
1,500.0	1,488.9	1,493.8	1,493.2	3.8	2.6	169.25	-30.7	21.2	170.4	165.1	5.21	32.679		
1,600.0	1,586.1	1,592.5	1,591.4	4.2	2.8	167.79	-29.9	30.5	190.7	185.0	5.61	33.996		
1,700.0	1,682.9	1,690.0	1,688.4	4.7	3.0	166.45	-28.9	40.6	212.5	206.5	6.02	35.315		
1,800.0	1,779.5	1,787.3	1,785.2	5.1	3.2	165.46	-27.9	50.7	235.2	228.7	6.45	36.489		
1,900.0	1,876.1	1,884.7	1,882.0	5.6	3.5	164.64	-26.9	60.9	258.0	251.1	6.88	37.478		
2,000.0	1,972.7	1,982.0	1,978.8	6.1	3.7	163.96	-26.0	71.0	280.8	273.4	7.33	38.319		
2,100.0	2,069.3	2,079.3	2,075.6	6.6	3.9	163.38	-25.0	81.1	303.6	295.8	7.78	39.038		
2,200.0	2,165.9	2,176.6	2,172.3	7.0	4.1	162.88	-24.0	91.2	326.5	318.2	8.23	39.657		
2,300.0	2,262.5	2,273.9	2,269.1	7.5	4.4	162.44	-23.0	101.4	349.4	340.7	8.69	40.195		
2,400.0	2,359.1	2,371.2	2,365.9	8.0	4.6	162.06	-22.1	111.5	372.3	363.1	9.15	40.665		
2,500.0	2,455.7	2,468.5	2,462.7	8.5	4.8	161.72	-21.1	121.6	395.2	385.6	9.62	41.078		
2,600.0	2,552.3	2,565.8	2,559.5	8.9	5.1	161.42	-20.1	131.7	418.1	408.0	10.09	41.443		
2,700.0	2,648.8	2,663.2	2,656.2	9.4	5.3	161.15	-19.1	141.9	441.1	430.5	10.56	41.768		
2,800.0	2,745.4	2,760.5	2,753.0	9.9	5.5	160.91	-18.2	152.0	464.0	453.0	11.03	42.058		
2,900.0	2,842.0	2,857.8	2,849.8	10.4	5.8	160.69	-17.2	162.1	487.0	475.5	11.51	42.318		

Anticollision Report

Company:	EnCana Oil & Gas (USA) Inc	Local Co-ordinate Reference:	Well State 1B-16H
Project:	DJ Wattenberg	TVD Reference:	WELL @ 5039.0ft (Original Well Elev)
Reference Site:	S16-T3N-R68W (State)	MD Reference:	WELL @ 5039.0ft (Original Well Elev)
Site Error:	0.0ft	North Reference:	True
Reference Well:	State 1B-16H	Survey Calculation Method:	Minimum Curvature
Well Error:	0.0ft	Output errors are at	2.00 sigma
Reference Wellbore	Hz	Database:	USA EDM 5000 Multi Users DB
Reference Design:	Plan #1	Offset TVD Reference:	Offset Datum

Offset Design		S16-T3N-R68W (State) - State 1F-16H - Hz - Plan #1											Offset Site Error:		0.0 ft	
Survey Program:		0-MWD											Offset Well Error:		0.0 ft	
Reference		Offset		Semi Major Axis			Distance									
Measured Depth	Vertical Depth	Measured Depth	Vertical Depth	Reference	Offset	Highside Toolface	Offset Wellbore Centre		Between Centres	Between Ellipses	Total Uncertainty	Separation			Warning	
(ft)	(ft)	(ft)	(ft)	(ft)	(ft)	(°)	+N/-S (ft)	+E/-W (ft)	(ft)	(ft)	Axis	Factor				
0.0	0.0	0.0	0.0	0.0	0.0	180.00	-40.1	0.0	40.1							
100.0	100.0	100.0	100.0	0.2	0.2	180.00	-40.1	0.0	40.1	39.8	0.30	131.949				
200.0	200.0	200.0	200.0	0.3	0.3	180.00	-40.1	0.0	40.1	39.4	0.65	61.388	CC, ES			
300.0	300.0	300.0	300.0	0.5	0.5	158.46	-40.1	0.0	40.9	39.9	1.00	40.806				
400.0	400.0	400.0	400.0	0.7	0.7	159.72	-40.1	0.0	43.3	42.0	1.35	32.066				
500.0	499.9	499.4	499.4	0.9	0.8	160.64	-40.6	0.7	47.9	46.2	1.70	28.170				
600.0	599.7	598.7	598.6	1.1	1.0	160.44	-42.0	2.8	55.1	53.0	2.05	26.822	SF			
700.0	699.4	697.6	697.5	1.3	1.2	159.50	-44.5	6.3	64.8	62.4	2.41	26.876				
800.0	798.9	796.2	795.9	1.5	1.4	158.21	-47.9	11.2	77.1	74.3	2.78	27.768				
900.0	898.3	894.2	893.6	1.8	1.6	156.80	-52.3	17.4	92.0	88.9	3.15	29.178				
1,000.0	997.4	991.6	990.6	2.0	1.8	155.43	-57.6	25.0	109.6	106.0	3.54	30.909				
1,100.0	1,096.3	1,088.3	1,086.6	2.3	2.1	154.15	-63.8	33.8	129.7	125.8	3.95	32.830				
1,200.0	1,194.9	1,184.1	1,181.7	2.7	2.3	152.99	-70.8	43.9	152.5	148.1	4.38	34.852				
1,300.0	1,293.3	1,279.1	1,275.6	3.0	2.6	151.96	-78.7	55.1	177.9	173.0	4.82	36.913				
1,400.0	1,391.2	1,373.0	1,368.3	3.4	2.9	151.03	-87.3	67.5	205.8	200.5	5.28	38.969				
1,500.0	1,488.9	1,467.7	1,461.6	3.8	3.2	150.26	-96.7	80.9	235.9	230.2	5.76	40.968				
1,600.0	1,586.1	1,562.5	1,555.0	4.2	3.5	149.81	-106.2	94.4	267.6	261.3	6.25	42.822				
1,700.0	1,682.9	1,656.9	1,647.9	4.7	3.8	149.58	-115.6	107.8	300.7	293.9	6.75	44.561				
1,800.0	1,779.5	1,751.0	1,740.6	5.1	4.1	149.62	-125.0	121.2	334.5	327.2	7.26	46.067				
1,900.0	1,876.1	1,845.1	1,833.3	5.6	4.4	149.65	-134.3	134.6	368.3	360.5	7.78	47.348				
2,000.0	1,972.7	1,939.2	1,926.0	6.1	4.7	149.67	-143.7	148.0	402.1	393.8	8.30	48.450				
2,100.0	2,069.3	2,033.3	2,018.7	6.6	5.1	149.70	-153.1	161.4	435.9	427.0	8.82	49.405				
2,200.0	2,165.9	2,127.5	2,111.3	7.0	5.4	149.72	-162.5	174.8	469.7	460.3	9.35	50.242				

Anticollision Report

Company:	EnCana Oil & Gas (USA) Inc	Local Co-ordinate Reference:	Well State 1B-16H
Project:	DJ Wattenberg	TVD Reference:	WELL @ 5039.0ft (Original Well Elev)
Reference Site:	S16-T3N-R68W (State)	MD Reference:	WELL @ 5039.0ft (Original Well Elev)
Site Error:	0.0ft	North Reference:	True
Reference Well:	State 1B-16H	Survey Calculation Method:	Minimum Curvature
Well Error:	0.0ft	Output errors are at	2.00 sigma
Reference Wellbore	Hz	Database:	USA EDM 5000 Multi Users DB
Reference Design:	Plan #1	Offset TVD Reference:	Offset Datum

Offset Design S16-T3N-R68W (State) - State 1G-16H - Hz - Plan #1													Offset Site Error: 0.0 ft	
Survey Program: 0-MWD													Offset Well Error: 0.0 ft	
Reference		Offset		Semi Major Axis			Distance							Warning
Measured Depth	Vertical Depth	Measured Depth	Vertical Depth	Reference	Offset	Highside Toolface	Offset Wellbore Centre		Between Centres	Between Ellipses	Total Uncertainty Axis	Separation Factor		
(ft)	(ft)	(ft)	(ft)	(ft)	(ft)	(°)	+N/-S (ft)	+E/-W (ft)	(ft)	(ft)				
0.0	0.0	0.0	0.0	0.0	0.0	180.00	-51.0	0.0	51.0					
100.0	100.0	100.0	100.0	0.2	0.2	180.00	-51.0	0.0	51.0	50.7	0.30	167.936		
200.0	200.0	200.0	200.0	0.3	0.3	180.00	-51.0	0.0	51.0	50.3	0.65	78.131	CC, ES	
300.0	300.0	300.0	300.0	0.5	0.5	158.36	-51.0	0.0	51.8	50.8	1.00	51.714		
400.0	400.0	399.2	399.2	0.7	0.7	158.83	-51.7	0.5	55.0	53.6	1.35	40.701		
500.0	499.9	498.2	498.2	0.9	0.9	158.86	-53.8	2.0	61.1	59.4	1.70	35.955		
600.0	599.7	596.8	596.7	1.1	1.0	158.56	-57.3	4.4	70.3	68.3	2.05	34.254		
700.0	699.4	695.0	694.7	1.3	1.2	158.07	-62.2	7.8	82.5	80.1	2.41	34.243	SF	
800.0	798.9	792.6	792.0	1.5	1.4	157.50	-68.3	12.1	97.7	94.9	2.77	35.247		
900.0	898.3	889.5	888.4	1.8	1.7	156.93	-75.8	17.4	115.8	112.7	3.14	36.892		
1,000.0	997.4	985.4	983.8	2.0	1.9	156.38	-84.5	23.5	136.9	133.4	3.52	38.948		
1,100.0	1,096.3	1,080.4	1,078.0	2.3	2.1	155.88	-94.5	30.4	161.0	157.1	3.90	41.269		
1,200.0	1,194.9	1,174.4	1,171.0	2.7	2.4	155.42	-105.5	38.2	187.9	183.6	4.29	43.754		
1,300.0	1,293.3	1,267.1	1,262.5	3.0	2.7	155.00	-117.7	46.7	217.6	212.9	4.70	46.335		
1,400.0	1,391.2	1,358.5	1,352.5	3.4	3.0	154.62	-130.9	55.9	250.1	245.0	5.11	48.963		
1,500.0	1,488.9	1,448.5	1,440.8	3.8	3.3	154.26	-145.0	65.8	285.4	279.9	5.53	51.601		
1,600.0	1,586.1	1,538.8	1,529.2	4.2	3.7	153.94	-160.2	76.4	323.3	317.3	5.97	54.194		
1,700.0	1,682.9	1,630.7	1,619.1	4.7	4.0	153.75	-175.8	87.4	362.8	356.4	6.41	56.592		
1,800.0	1,779.5	1,722.2	1,708.6	5.1	4.4	153.81	-191.4	98.3	403.0	396.1	6.87	58.647		
1,900.0	1,876.1	1,813.8	1,798.2	5.6	4.7	153.85	-207.0	109.2	443.2	435.9	7.34	60.415		
2,000.0	1,972.7	1,905.3	1,887.7	6.1	5.1	153.89	-222.6	120.2	483.5	475.7	7.80	61.950		

Anticollision Report

Company:	EnCana Oil & Gas (USA) Inc	Local Co-ordinate Reference:	Well State 1B-16H
Project:	DJ Wattenberg	TVD Reference:	WELL @ 5039.0ft (Original Well Elev)
Reference Site:	S16-T3N-R68W (State)	MD Reference:	WELL @ 5039.0ft (Original Well Elev)
Site Error:	0.0ft	North Reference:	True
Reference Well:	State 1B-16H	Survey Calculation Method:	Minimum Curvature
Well Error:	0.0ft	Output errors are at	2.00 sigma
Reference Wellbore	Hz	Database:	USA EDM 5000 Multi Users DB
Reference Design:	Plan #1	Offset TVD Reference:	Offset Datum

Offset Design S16-T3N-R68W (State) - State 1H-16H - Hz - Plan #1													Offset Site Error:	0.0 ft
Survey Program:		0-MWD											Offset Well Error:	0.0 ft
Reference		Offset		Semi Major Axis			Distance				Total Uncertainty Axis	Separation Factor	Warning	
Measured Depth (ft)	Vertical Depth (ft)	Measured Depth (ft)	Vertical Depth (ft)	Reference (ft)	Offset (ft)	Highside Toolface (°)	Offset Wellbore Centre +N/-S (ft)	+E/-W (ft)	Between Centres (ft)	Between Ellipses (ft)				
0.0	0.0	0.0	0.0	0.0	0.0	180.00	-61.9	0.0	61.9					
100.0	100.0	100.0	100.0	0.2	0.2	180.00	-61.9	0.0	61.9	61.6	0.30	203.908		
200.0	200.0	200.0	200.0	0.3	0.3	180.00	-61.9	0.0	61.9	61.3	0.65	94.866	CC, ES	
300.0	300.0	299.0	299.0	0.5	0.5	157.95	-62.7	0.4	63.5	62.5	1.00	63.494		
400.0	400.0	397.9	397.8	0.7	0.7	157.83	-65.0	1.5	68.3	66.9	1.35	50.625		
500.0	499.9	496.4	496.3	0.9	0.9	157.65	-68.8	3.3	76.2	74.5	1.70	44.863		
600.0	599.7	594.5	594.2	1.1	1.1	157.45	-74.2	5.8	87.3	85.2	2.05	42.561		
700.0	699.4	692.1	691.5	1.3	1.3	157.25	-81.0	9.1	101.5	99.1	2.41	42.184	SF	
800.0	798.9	788.9	787.8	1.5	1.5	157.06	-89.2	13.0	118.8	116.1	2.77	42.973		
900.0	898.3	884.8	883.2	1.8	1.7	156.88	-98.8	17.6	139.2	136.1	3.13	44.505		
1,000.0	997.4	979.7	977.3	2.0	2.0	156.72	-109.7	22.8	162.7	159.2	3.50	46.527		
1,100.0	1,096.3	1,073.6	1,070.2	2.3	2.3	156.57	-121.9	28.6	189.1	185.3	3.87	48.875		
1,200.0	1,194.9	1,166.1	1,161.6	2.7	2.6	156.43	-135.3	35.0	218.6	214.3	4.25	51.441		
1,300.0	1,293.3	1,257.4	1,251.4	3.0	2.9	156.30	-149.7	41.9	250.9	246.2	4.63	54.150		
1,400.0	1,391.2	1,347.2	1,339.5	3.4	3.2	156.16	-165.2	49.3	286.0	281.0	5.02	56.947		
1,500.0	1,488.9	1,437.2	1,427.6	3.8	3.5	156.04	-181.9	57.2	323.9	318.5	5.42	59.750		
1,600.0	1,586.1	1,529.0	1,517.5	4.2	3.9	156.00	-199.1	65.5	363.5	357.7	5.83	62.361		
1,700.0	1,682.9	1,620.2	1,606.7	4.7	4.2	156.04	-216.3	73.6	404.5	398.3	6.24	64.821		
1,800.0	1,779.5	1,711.1	1,695.5	5.1	4.6	156.27	-233.3	81.7	446.3	439.6	6.67	66.929		
1,900.0	1,876.1	1,801.9	1,784.4	5.6	4.9	156.46	-250.4	89.9	488.1	481.0	7.10	68.762		

Anticollision Report

Company:	EnCana Oil & Gas (USA) Inc	Local Co-ordinate Reference:	Well State 1B-16H
Project:	DJ Wattenberg	TVD Reference:	WELL @ 5039.0ft (Original Well Elev)
Reference Site:	S16-T3N-R68W (State)	MD Reference:	WELL @ 5039.0ft (Original Well Elev)
Site Error:	0.0ft	North Reference:	True
Reference Well:	State 1B-16H	Survey Calculation Method:	Minimum Curvature
Well Error:	0.0ft	Output errors are at	2.00 sigma
Reference Wellbore	Hz	Database:	USA EDM 5000 Multi Users DB
Reference Design:	Plan #1	Offset TVD Reference:	Offset Datum

Reference Depths are relative to WELL @ 5039.0ft (Original Well Elev)

Offset Depths are relative to Offset Datum

Central Meridian is -105.500000 °

Coordinates are relative to: State 1B-16H

Coordinate System is US State Plane 1983, Colorado Northern Zone

Grid Convergence at Surface is: 0.32°

