

T6N, R92W, 6th P.M.

QUICKSILVER RESOURCES, INC.

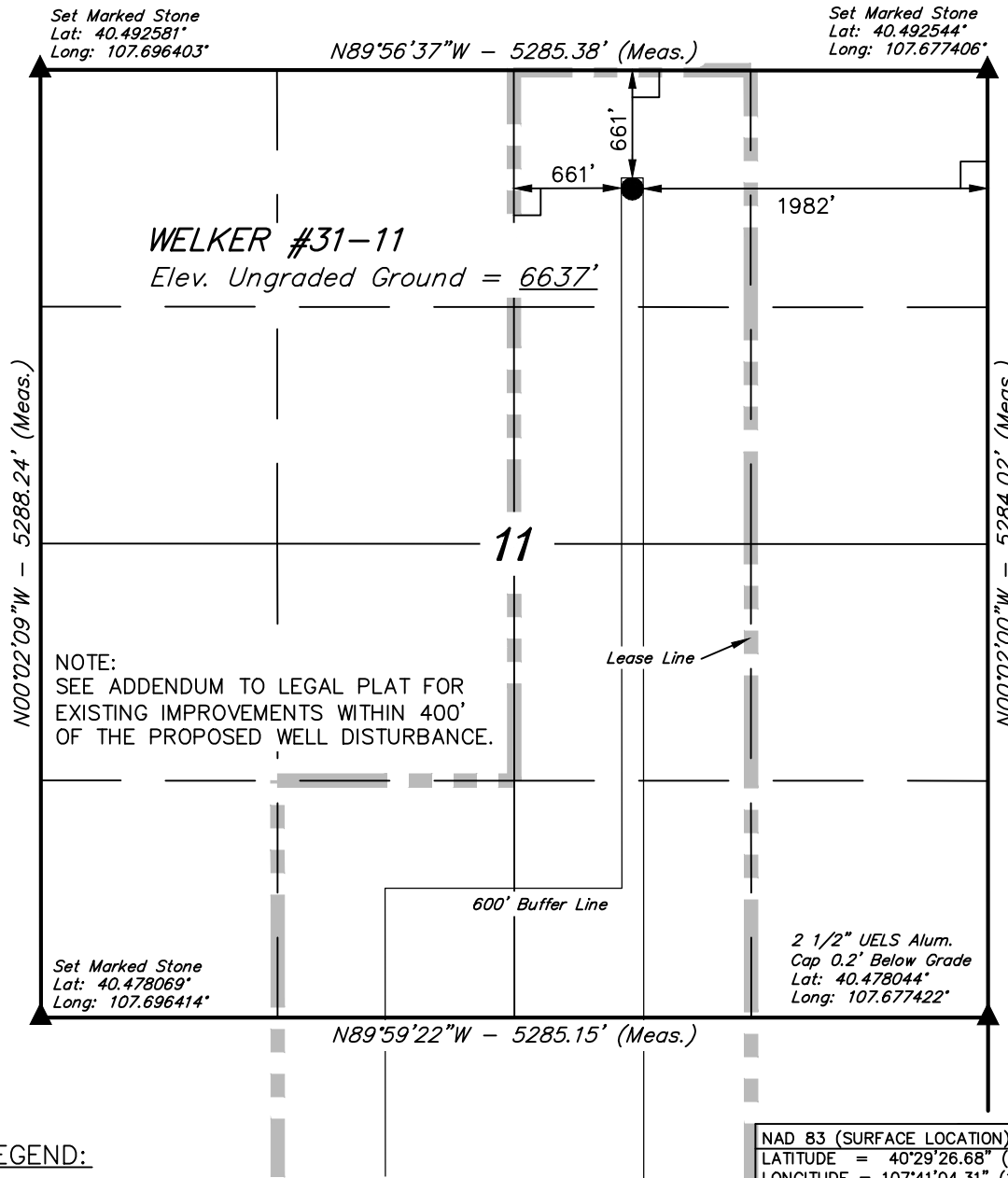
Well location, WELKER #31-11, located as shown in the NW 1/4 NE 1/4 of Section 11, T6N, R92W, 6th. P.M., Moffat County, Colorado.

BASIS OF ELEVATION

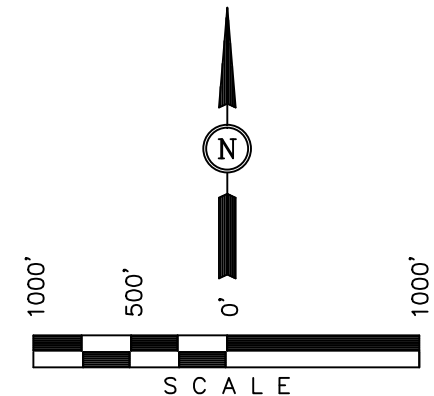
SPOT ELEVATION LOCATED AT THE NORTHEAST CORNER OF SECTION 10, T6N, R93W, 6th. P.M., TAKEN FROM THE HORSE GULCH QUADRANGLE, COLORADO, MOFFAT COUNTY, 7.5 MINUTE QUAD. (TOPOGRAPHIC MAP) PUBLISHED BY THE UNITED STATES DEPARTMENT OF THE INTERIOR, GEOLOGICAL SURVEY. SAID ELEVATION IS MARKED AS BEING 6246 FEET.

BASIS OF BEARINGS

BASIS OF BEARINGS IS A G.P.S. OBSERVATION.



NOTE:
SEE ADDENDUM TO LEGAL PLAT FOR
EXISTING IMPROVEMENTS WITHIN 400'
OF THE PROPOSED WELL DISTURBANCE.



CERTIFICATE

THIS IS TO CERTIFY THAT THE ABOVE PLAT WAS PREPARED FROM FIELD NOTES OF ACTUAL SURVEYS MADE BY ME OR UNDER MY SUPERVISION AND THAT THE SAME ARE TRUE AND CORRECT TO THE BEST OF MY KNOWLEDGE AND BELIEF.

REGISTERED LAND SURVEYOR
REGISTRATION NO. 17492
STATE OF COLORADO
OF 99-20-12

LEGEND:

- └─┘ = 90° SYMBOL
- = PROPOSED WELL HEAD.
- ▲ = SECTION CORNERS LOCATED.

PDOP = 1.4

NAD 83 (SURFACE LOCATION)
LATITUDE = 40°29'26.68" (40.490744)
LONGITUDE = 107°41'04.31" (107.684531)
NAD 27 (SURFACE LOCATION)
LATITUDE = 40°29'26.78" (40.490772)
LONGITUDE = 107°41'02.06" (107.683906)
STATE PLANE NAD 83
N: 1429102.47 E: 2392461.47
STATE PLANE NAD 27
N: 429101.40 E: 1392619.37

UINTAH ENGINEERING & LAND SURVEYING 85 SOUTH 200 EAST - VERNAL, UTAH 84078 (435) 789-1017		
SCALE 1" = 1000'	DATE SURVEYED: 11-15-12	DATE DRAWN: 11-20-12
PARTY G.M. J.D. J.G.G.	REFERENCES G.L.O. PLAT	
WEATHER COLD	FILE	QUICKSILVER RESOURCES, INC.

QUICKSILVER RESOURCES, INC.

ADDENDUM TO LEGAL PLAT FOR

WELKER #31-11
SECTION 11, T6N, R92W, 6th. P.M.
661' FNL 1982' FEL

SCALE: 1" = 200'
DATE: 11-20-12
DRAWN BY: J.G.G..

