

**WHITING OIL & GAS CORP.**

**CONSTRUCTION LAYOUT FOR**

**RAZOR #33-2813H**

**SECTION 33, T10N, R58W, 6th. P.M.**

**565' FSL 660' FWL**

**FIGURE #1**

SCALE: 1" = 100'

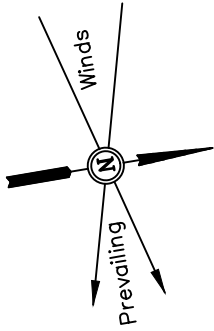
DATE: 04-27-12

DRAWN BY: R.L.L.

REV: 07-23-12 H.K.W.

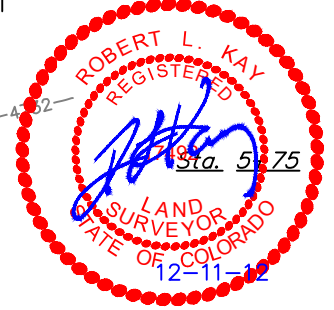
REV: 09-12-12 J.M.H.

REV: 12-11-12 J.M.H.



El. 32.9'  
**C-13.2'**  
(Btm. Pit)

El. 32.7'  
**C-13.0'** Sta. 6+90  
(Btm. Pit)



Existing  
Underground  
Waterline

**C-1.2'**  
El. 30.9'

Approx.  
Top of  
Cut Slope

**C-1.1'**  
El. 30.8' Sta. 4+20

**C-1.4'**  
El. 31.1'

Cut/Fill  
Transition Line

**C-0.2'**  
El. 29.9'

**F-0.1'**  
El. 29.6'

**F-0.5'** Sta. 2+00  
El. 29.2'

**F-1.6'**  
El. 28.1'

**F-1.7'**  
El. 28.0'

Approx.  
Toe of  
Fill Slope

**F-2.8'**  
El. 26.9'

Fresh Water Supply Pit  
& Spoils Stockpile

N01°16'37"W = 6695.30'  
(To Target Bottom Hole)

Elev. Ungraded Ground At Loc. Stake = **4729.9'**  
FINISHED GRADE ELEV. AT LOC. STAKE = **4729.7'**

**UINTAH ENGINEERING & LAND SURVEYING**  
85 So. 200 East \* Vernal, Utah 84078 \* (435) 789-1017

# WHITING OIL & GAS CORP.

## CONSTRUCTION LAYOUT CROSS SECTIONS FOR

RAZOR #33-2813H

SECTION 33, T10N, R58W, 6th. P.M.

565' FSL 660' FWL

FIGURE #2

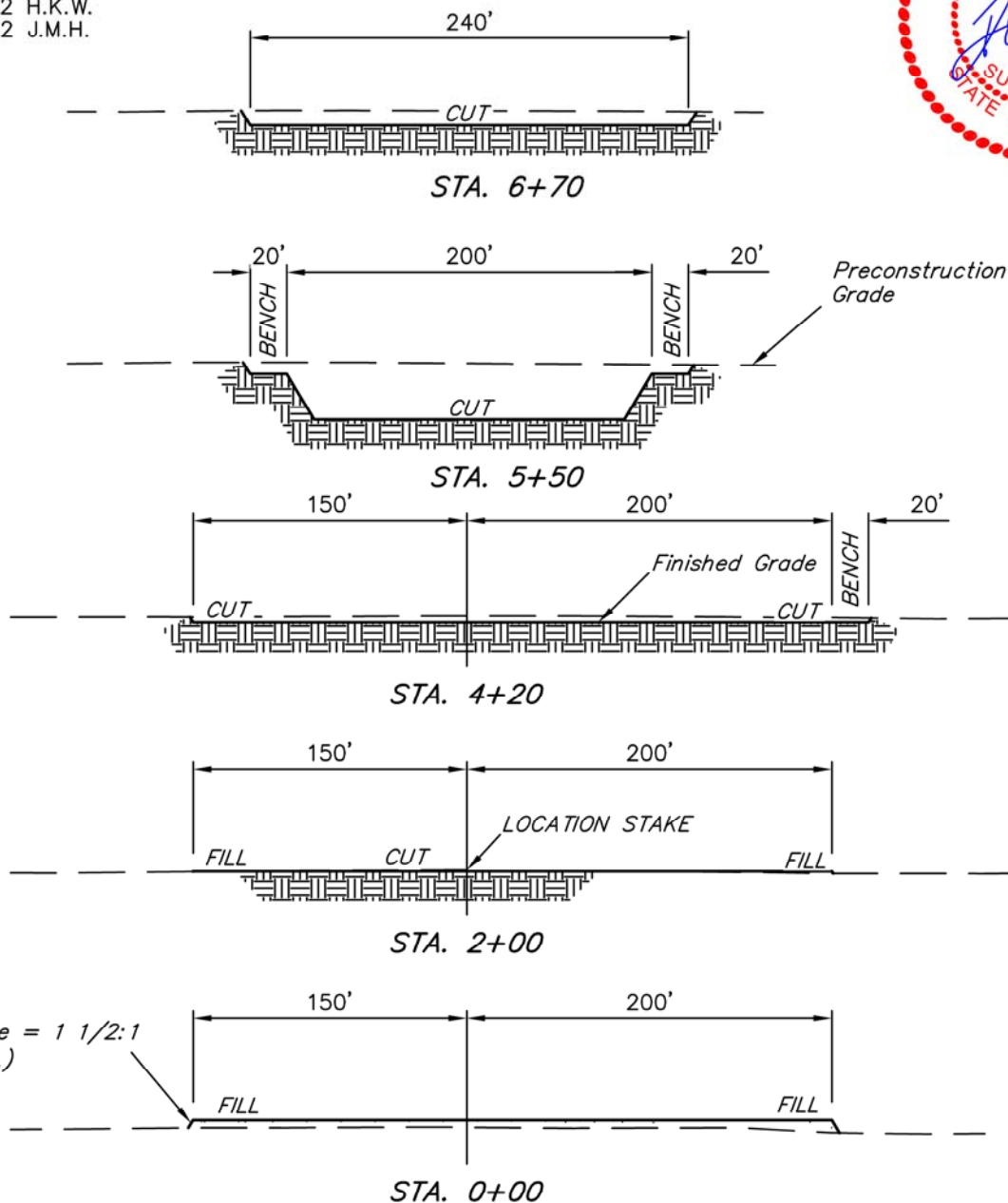
X-Section  
Scale  
1" = 100'

DATE: 04-27-12

DRAWN BY: R.L.L.

REV: 07-23-12 H.K.W.

REV: 09-12-12 J.M.H.



**NOTE:**

Topsoil should not be Stripped Below Finished Grade on Substructure Area.

APPROXIMATE ACREAGES  
WELL SITE DISTURBANCE = ± 6.553 ACRES

\* NOTE:  
FILL QUANTITY INCLUDES 5% FOR COMPACTION

APPROXIMATE YARDAGES

(6") Topsoil Stripping	=	4,030 Cu. Yds.
Remaining Location	=	21,200 Cu. Yds.
<b>TOTAL CUT</b>	=	<b>25,230 CU. YDS.</b>
<b>FILL</b>	=	<b>4,250 CU. YDS.</b>

EXCESS MATERIAL	=	20,980 Cu. Yds.
Topsoil & Pit Backfill (1/2 Pit Vol.)	=	12,100 Cu. Yds.
EXCESS UNBALANCE (After Interim Rehabilitation)	=	8,880 Cu. Yds.

UINTAH ENGINEERING & LAND SURVEYING  
85 So. 200 East \* Vernal, Utah 84078 \* (435) 789-1017

**WHITING OIL & GAS CORP.**  
**TYPICAL RIG LAYOUT FOR**  
**RAZOR #33-2813H**  
**SECTION 33, T10N, R58W, 6th. P.M.**  
**565' FSL 660' FWL**

**FIGURE #3**

SCALE: 1" = 100'  
 DATE: 04-27-12  
 DRAWN BY: R.L.L.  
 REV: 07-23-12 H.K.W.  
 REV: 09-12-12 J.M.H.  
 REV: 12-11-12 J.M.H.

