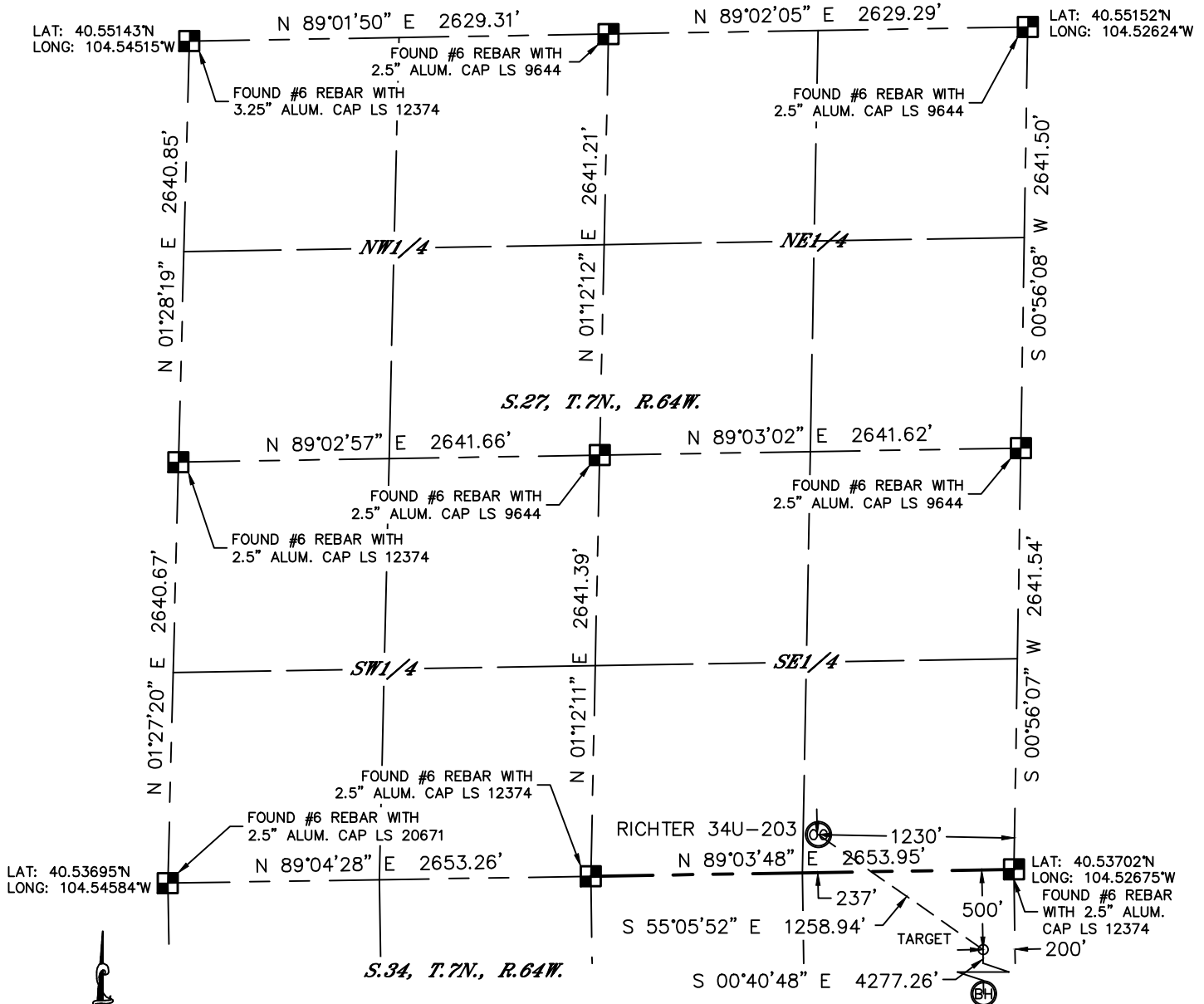


WELL LOCATION CERTIFICATE

SECTION: 27
TOWNSHIP: 7N
RANGE: 64W

THIS MAP DOES NOT REPRESENT A BOUNDARY SURVEY



In accordance with a request from Jeff Dillingham with PDC ENERGY Lat40', Inc. has determined the surface location of the RICHTER 34U-203 to be 237' from the SOUTH line and 1230' from the EAST line as measured at right angles from the section lines of Section 27, Township 7 North, Range 64 West and the bottom hole to be 500' from the SOUTH line and 200' from the EAST line as measured at right angles from the section lines of Section 34, Township 7 North, Range 64 West of the Sixth Principal Meridian, County of Weld, State of Colorado.

I hereby state that this Well Location Certificate was prepared by me, or under my direct supervision, that the fieldwork was completed on 9/4/2012, for and on behalf of PDC ENERGY. That this is not a Land Survey Plat or an Improvement Survey Plat, and that it is not to be relied upon for establishment of fence, building, or other future improvement lines.

NOTE:

- 1) Bearings shown are Grid Bearings of the Colorado State Plane Coordinate System, North Zone, North American Datum 1983/2007. The lineal dimensions as contained herein are based upon the "U.S. Survey Foot."
- 2) Ground elevations are based on an observed GPS elevation (NAVD 1988 DATUM).
- 3) IMPROVEMENTS: See LOCATION DRAWING for all visible improvements within 400' of disturbed area.
- 4) SURFACE USE: RANGELAND
- 5) INSTRUMENT OPERATOR: WYATT HALL

SURFACE LOCATION

<u>START POINT</u>	<u>END POINT</u>
LAT: 40.53766°N	LAT: 40.53565°N
LONG: 104.53116°W	LONG: 104.52716°W
PDOP: 1.5	
ELEV: 4870'	
1/4,1/4: SE1/4SE1/4	
NEAREST PROPERTY LINE: 237' SOUTH	

TARGET HOLE

LAT: 40.53565°N
LONG: 104.52747°W



BOTTOM HOLE

LAT: 40.52391°N
LONG: 104.52746°W

NOTE

NOTE
According to Colorado law, you must commence any legal action based upon any defect in this W.L.C. within three years after you discover such defect. In no event, may any action based upon any defect in this survey be commenced more than ten years after the date of the certificate shown hereon. (13-80-105 C.R.S.)

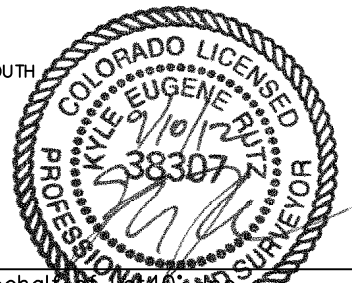
LEGEND

-  = ALIQUOT MONUMENT AS DESCRIBED
 = CALCULATED POSITION

SHEET 1 OF 2

Kyle E. Rutz—On behalf of
Colorado Licensed Professional
Land Surveyor No. 38307

DATE: 9/10/2012
PROJECT#: 2011311



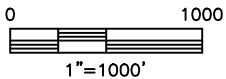
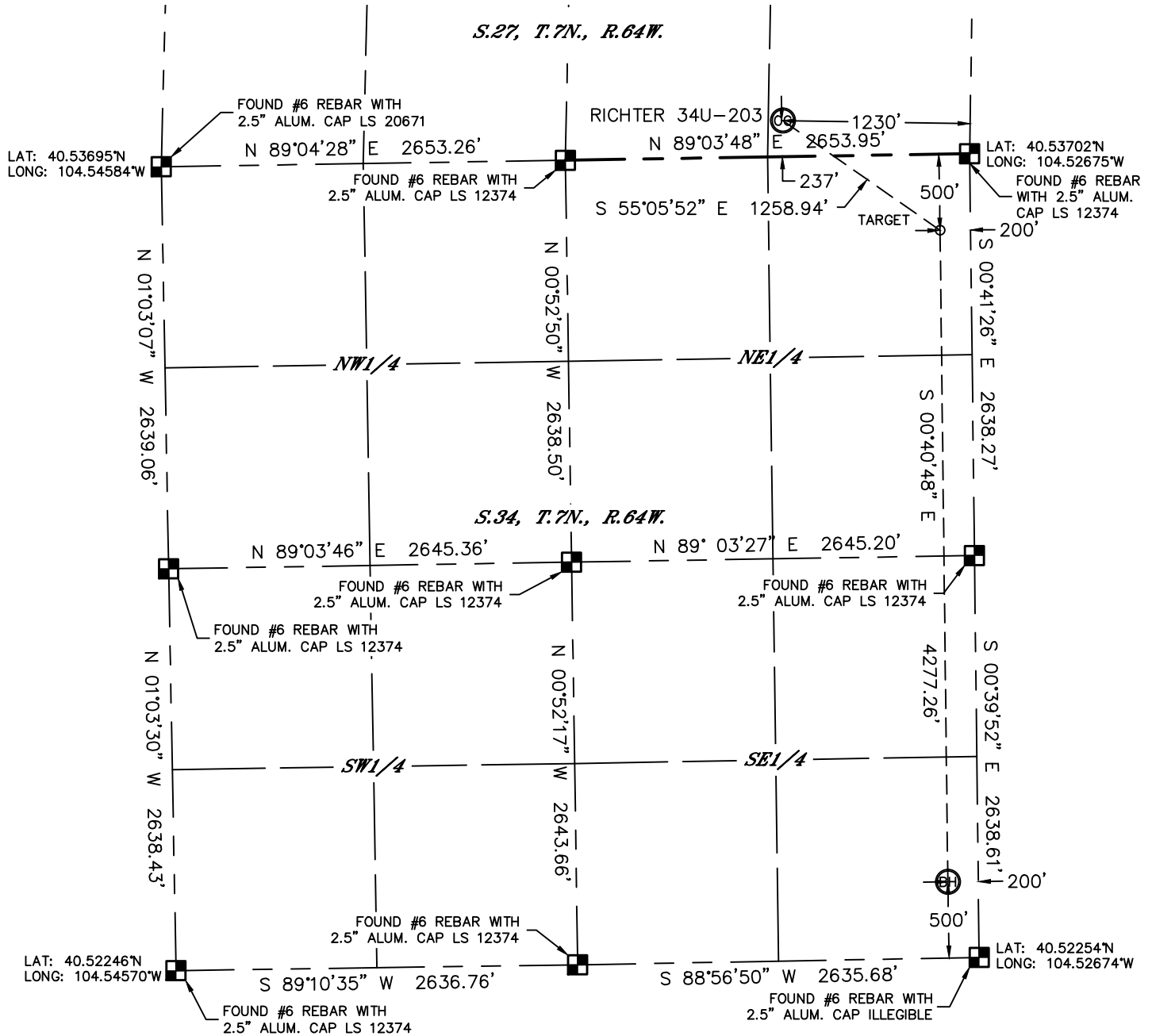


Lat40°, Inc. 1635 Foxtrail Drive, Suite 325 Loveland, CO 970-776-3321

WELL LOCATION CERTIFICATE

THIS MAP DOES NOT REPRESENT A BOUNDARY SURVEY

SECTION: 27
TOWNSHIP: 7N
RANGE: 64W

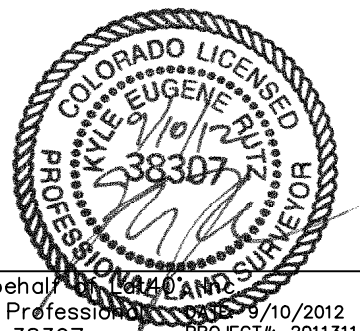


NOTE
According to Colorado law, you must commence any legal action based upon any defect in this W.L.C. within three years after you discover such defect. In no event, may any action based upon any defect in this survey be commenced more than ten years after the date of the certificate shown hereon. (13-80-105 C.R.S.)

LEGEND
■ = ALIQUOT MONUMENT AS DESCRIBED
○ = CALCULATED POSITION

SHEET 2 OF 2

Kyle E. Rutz—On behalf of Lat40, Inc.
Colorado Licensed Professional Land Surveyor No. 38307
DATE: 8/10/2012
PROJECT#: 2011311



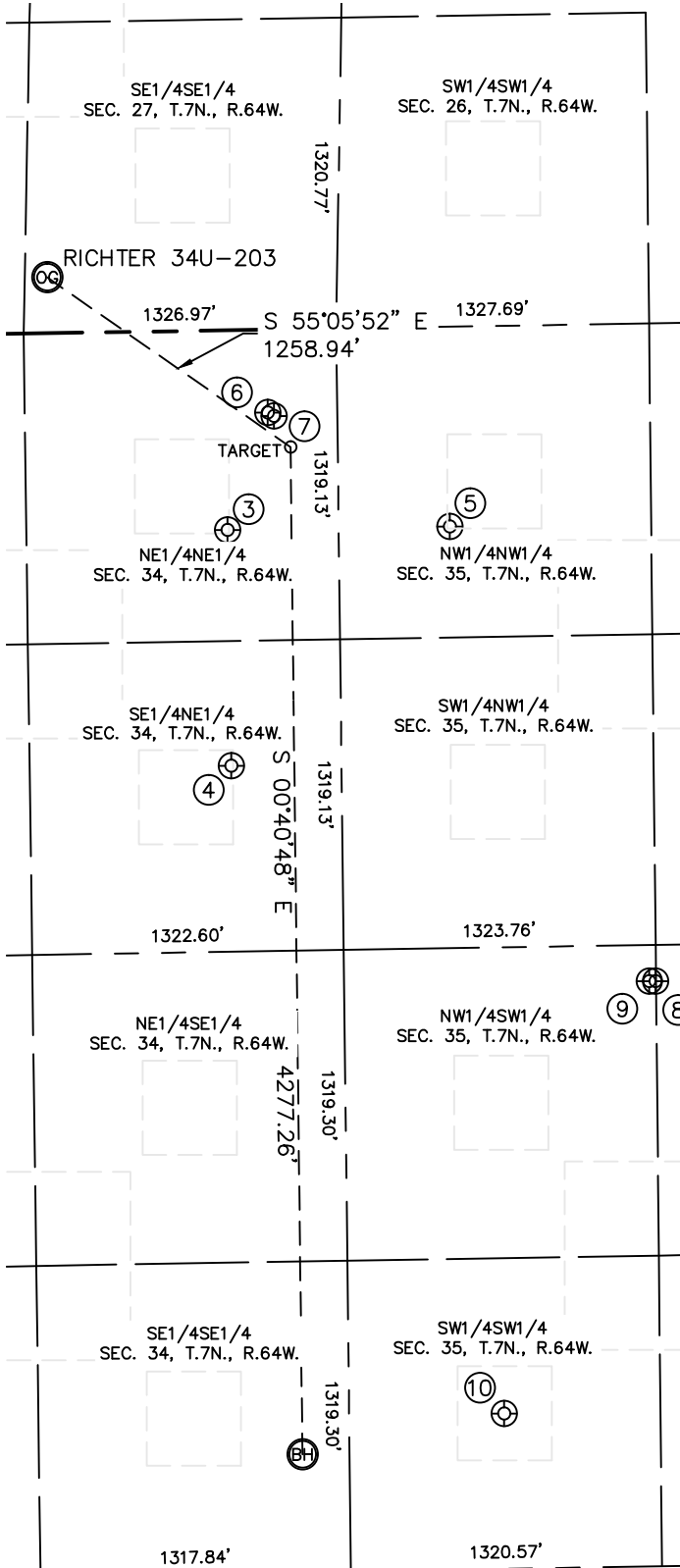


Lat40°, Inc. 1635 Foxtrail Drive, Suite 325 Loveland, CO 970-776-3321

SITE SKETCH

RICHTER 34U-203

SECTION: 27
TOWNSHIP: 7N
RANGE: 64W



③
D DYER 41-34
NE1/4NE1/4
848' FNL
472' FEL
LAT-40.53469°N
LONG-104.52845°W
PDOP: 2.1
ELEV: 4865'

④
D DYER 42-34
SE1/4NE1/4
1849' FNL
468' FEL
LAT-40.53194°N
LONG-104.52843°W
PDOP: 2.7
ELEV: 4842'

⑤
LANG 11-35
NW1/4NW1/4
848' FNL
472' FWL
LAT-40.53470°N
LONG-104.52505°W
PDOP: 2.6
ELEV: 4863'

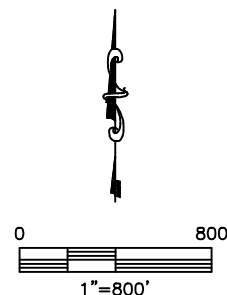
⑥
DRYER USX AB
35-68-1HN
NE1/4NE1/4
352' FNL
295' FEL
LAT-40.53605°N
LONG-104.52781°W
PDOP: 1.3
ELEV: 4872'

⑦
DRYER USX AB
35-67-1HN
NE1/4NE1/4
367' FNL
269' FEL
LAT-40.53601°N
LONG-104.52772°W
PDOP: 1.8
ELEV: 4872'

⑧
CECIL USX AB 35-11D
NW1/4SW1/4
2484' FSL
1295' FWL
LAT-40.52938°N
LONG-104.52199°W
PDOP: 1.2
ELEV: 4835'

⑨
CECIL USX AB 35-12D
NW1/4SW1/4
2484' FSL
1321' FWL
LAT-40.52938°N
LONG-104.52209°W
PDOP: 1.6
ELEV: 4836'

⑩
DRYER USX AB 35-13
SW1/4SW1/4
659' FSL
658' FWL
LAT-40.52436°N
LONG-104.52437°W
PDOP: 1.8
ELEV: 4828'



DATE: 9/10/2012
PROJECT#: 2011311