



Corporate Office

1775 Sherman Street, #3000
Denver, Colorado 80203
303.860.5800
www.pdce.com

December 19, 2012

State of Colorado, Oil & Gas Conservation Commission
Attn: Michael Lepore
1120 Lincoln Street, Suite 801
Denver, CO 80203

Re: **Letter to the Director, Rule 318A.m.**
Dillard 20R-203
NWNE, Section 20, T7N, R64W
Weld County, Colorado

Dear Director:

Petroleum Development Corporation doing business as PDC Energy ("PDC") hereby certifies to the Director that PDC holds all minerals in the proposed 320 acre wellbore spacing unit consisting of the E2W2 and W2E2 of Sec 20 T7N R64W; therefore, no 30-day notice is needed to owners in the proposed wellbore spacing unit. This horizontal well location crosses existing unit boundaries and requires the formation of the proposed unit. PDC hereby requests the Director to approve the well.

If you should have any questions or concerns regarding this permit, please contact the undersigned at (303) 860-5800.

Sincerely,

A handwritten signature in blue ink, appearing to read "Liz Lindow".

Liz Lindow
Regulatory Analyst
PDC Energy, Inc.

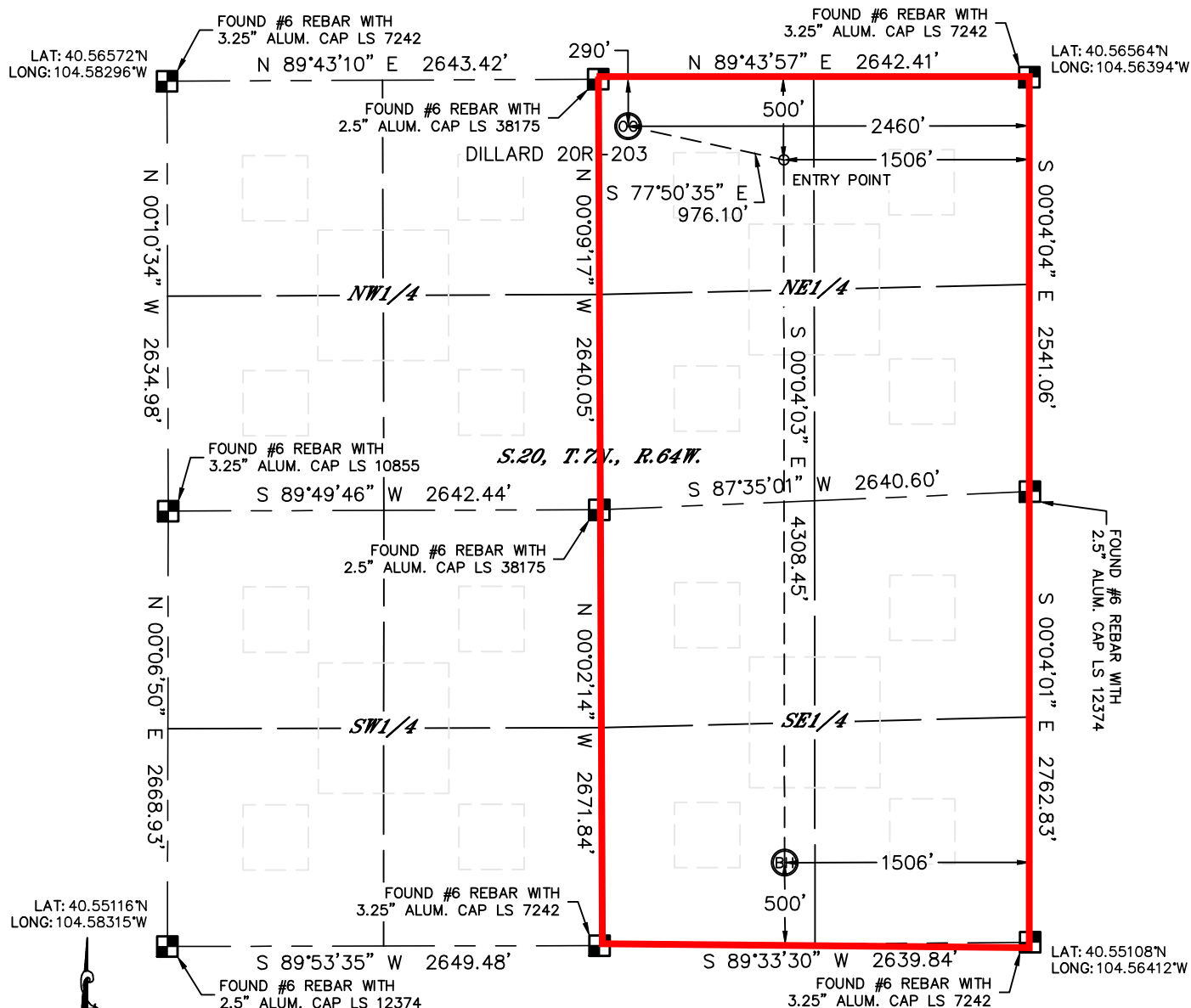


Lat40°, Inc. 1635 Foxtrail Drive, Suite 325 Loveland, CO 970-776-3321

WELL LOCATION CERTIFICATE

THIS MAP DOES NOT REPRESENT A BOUNDARY SURVEY

SECTION: 20
TOWNSHIP: 7N
RANGE: 64W



In accordance with a request from Al Bragg with PDC Energy Lat40°, Inc. has determined the surface location of the DILLARD 20R-203 to be 290' from the NORTH line and 2460' from the EAST line and the bottom hole to be 500' from the SOUTH line and 1506' from the EAST line as measured at right angles from the section lines of Section 20, Township 7 North, Range 64 West of the Sixth Principal Meridian, County of Weld, State of Colorado.

I hereby state that this Well Location Certificate was prepared by me, or under my direct supervision, that the fieldwork was completed on 10/16/2012, for and on behalf of PDC Energy. That this is not a Land Survey Plat or an Improvement Survey Plat, and that it is not to be relied upon for establishment of fence, building, or other future improvement lines.

NOTE:

- 1) Bearings shown are Grid Bearings of the Colorado State Plane Coordinate System, North Zone, North American Datum 1983/2007. The lineal dimensions as contained herein are based upon the "U.S. Survey Foot."
- 2) Ground elevations are based on an observed GPS elevation (NAVD 1988 DATUM).
- 3) IMPROVEMENTS: See LOCATION DRAWING for all visible improvements within 400' of disturbed area.
- 4) SURFACE USE: CROPLAND
- 5) INSTRUMENT OPERATOR: ADAM KELLY

NOTE

According to Colorado law, you must commence any legal action based upon any defect in this W.L.C. within three years after you discover such defect. In no event, may any action based upon any defect in this survey be commenced more than ten years after the date of the certificate shown hereon. (13-80-105 C.R.S.)

LEGEND

- = ALIQUOT MONUMENT AS DESCRIBED
- = CALCULATED POSITION

SURFACE LOCATION

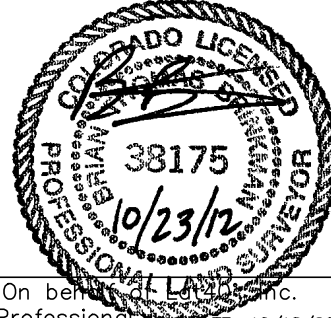
LATITUDE: 40.56488°N
LONGITUDE: 104.57280°W
PDOP: 1.2
ELEV: 4899'
1/4, 1/4: NW1/4NE1/4
NEAREST PROPERTY LINE: 182' W

ENTRY POINT

LATITUDE: 40.56429°N
LONGITUDE: 104.56937°W

BOTTOM HOLE

LATITUDE: 40.55246°N
LONGITUDE: 104.56952°W



Brian T. Brinkman—On behalf of Lat40°, Inc.
Colorado Licensed Professional
Land Surveyor No. 38175

DATE: 10/18/2012
PROJECT#: 2011290