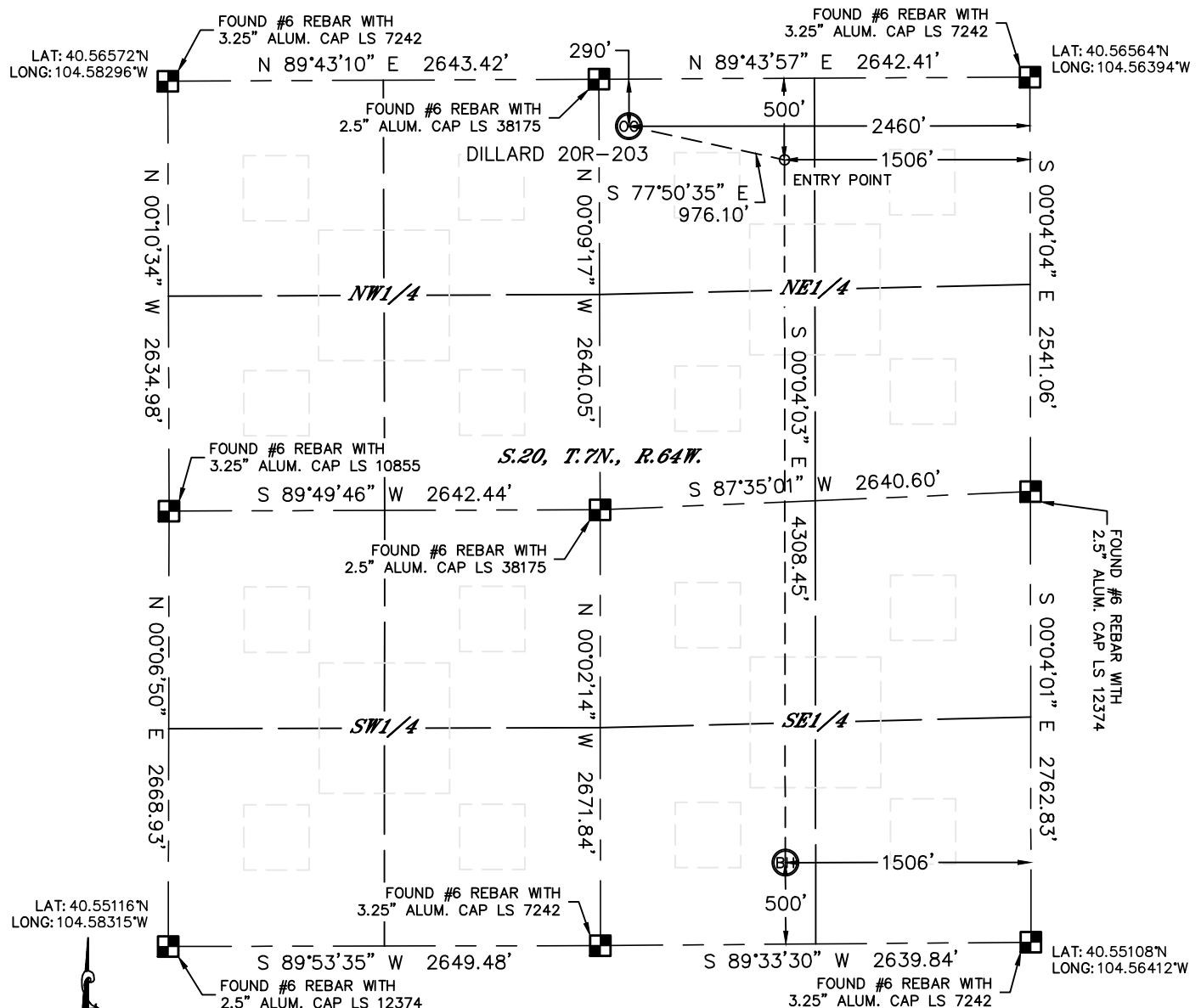


WELL LOCATION CERTIFICATE

THIS MAP DOES NOT REPRESENT A BOUNDARY SURVEY

SECTION: 20
TOWNSHIP: 7N
RANGE: 64W



In accordance with a request from Al Bragg with PDC Energy Lat40', Inc. has determined the surface location of the DILLARD 20R-203 to be 290' from the NORTH line and 2460' from the EAST line and the bottom hole to be 500' from the SOUTH line and 1506' from the EAST line as measured at right angles from the section lines of Section 20, Township 7 North, Range 64 West of the Sixth Principal Meridian, County of Weld, State of Colorado.

I hereby state that this Well Location Certificate was prepared by me, or under my direct supervision, that the fieldwork was completed on 10/16/2012, for and on behalf of PDC Energy. That this is not a Land Survey Plat or an Improvement Survey Plat, and that it is not to be relied upon for establishment of fence, building, or other future improvement lines.

NOTE:

- 1) Bearings shown are Grid Bearings of the Colorado State Plane Coordinate System, North Zone, North American Datum 1983/2007. The lineal dimensions as contained herein are based upon the "U.S. Survey Foot."
- 2) Ground elevations are based on an observed GPS elevation (NAVD 1988 DATUM).
- 3) IMPROVEMENTS: See LOCATION DRAWING for all visible improvements within 400' of disturbed area.
- 4) SURFACE USE: CROPLAND
- 5) INSTRUMENT OPERATOR: ADAM KELLY

SURFACE LOCATION

LATITUDE: 40.56488°N
 LONGITUDE: 104.57280°W
 PDOP: 1.2
 ELEV: 4899'
 1/4,1/4: NW1/4NE1/4
 NEAREST PROPERTY LINE: 182' W

ENTRY POINT

LATITUDE: 40.56429°N
LONGITUDE: 104.56937°W



BOTTOM HOLE

LATITUDE: 40.55246°N
LONGITUDE: 104.56952°W

NOTE

NOTE
According to Colorado law, you must commence any legal action based upon any defect in this W.L.C. within three years after you discover such defect. In no event, may any action based upon any defect in this survey be commenced more than ten years after the date of the certificate shown hereon. (13-80-105 C.R.S.)

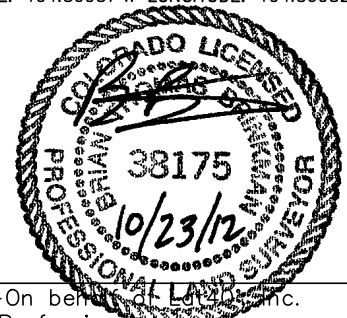
LEGEND

- LEGEND
-  = ALIQUOT MONUMENT AS DESCRIBED
-  = CALCULATED POSITION

Brian T. Brinkman—On behalf of Laidlaw, Inc.

Colorado Licensed Professional
Land Surveyor No. 38175

DATE: 10/18/2012
PROJECT#: 2011290



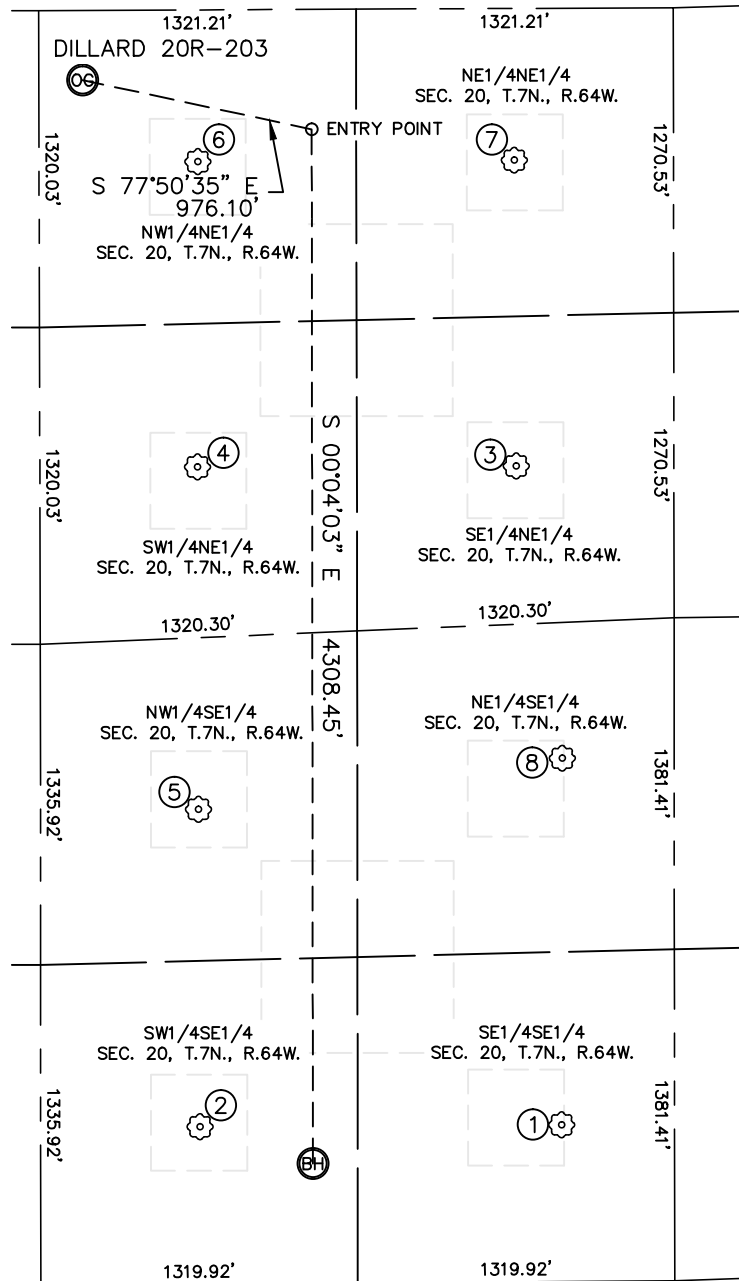


Lat40°, Inc. 1635 Foxtrail Drive, Suite 325 Loveland, CO 970-776-3321

SITE SKETCH

DILLARD 20R-203

SECTION: 20
TOWNSHIP: 7N
RANGE: 64W



①
DILLARD 44-20
SE1/4SE1/4
653' FSL
471' FEL
LAT-40.55288°N
LONG-104.56579°W
PDOP: 2.1
ELEV: 4865'

②
DILLARD 34-20
SW1/4SE1/4
657' FSL
1977' FEL
LAT-40.55290°N
LONG-104.57121°W
PDOP: 1.3
ELEV: 4865'

③
DILLARD 42-20
SE1/4NE1/4
1907' FNL
657' FEL
LAT-40.56041°N
LONG-104.56637°W
PDOP: 1.8
ELEV: 4892'

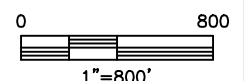
④
DILLARD 32-20
SW1/4NE1/4
1904' FNL
1983' FEL
LAT-40.56044°N
LONG-104.57114°W
PDOP: 1.2
ELEV: 4897'

⑤
DILLARD 33-20
NW1/4SE1/4
1979' FSL
1981' FEL
LAT-40.55653°N
LONG-104.57118°W
PDOP: 1.1
ELEV: 4873'

⑥
DILLARD 31-20
NW1/4NE1/4
633' FNL
1981' FEL
LAT-40.56393°N
LONG-104.57109°W
PDOP: 2.6
ELEV: 4897'

⑦
DILLARD 41-20
NE1/4NE1/4
633' FNL
663' FEL
LAT-40.56391°N
LONG-104.56635°W
PDOP: 2.7
ELEV: 4902'

⑧
DILLARD 43-20
NE1/4SE1/4
2180' FSL
467' FEL
LAT-40.55707°N
LONG-104.56572°W
PDOP: 3.0
ELEV: 4880'



DATE: 10/18/2012
PROJECT#: 2011290