

1700 Broadway
Suite 650
Denver, Colorado 80290



Shannon Hartnett
Permitting Agent
Tel: 303.830.9893
E-mail: shartnett@gwogco.com

December 20, 2012

Colorado Oil and Gas Conservation Commission
The Chancery Building
1120 Lincoln Street, Suite 801
Denver, CO 80203

RE: **30 day Certification Letter – Rule 318Ac**
Greenspire FD 22-23H
Township 6 North, Range 67 West, 6th P.M.
Section 16: NWNE
Weld County, Colorado

Dear Director:

Great Western Oil and Gas Company, LLC hereby certifies to the Director that a thirty (30-day) notice has been given by certified mail to all owners in the proposed wellbore spacing unit consisting of **Section 16, T6N-R67W, 6th P.M., 640 acres.** We have not received any objections to such well location or proposed spacing unit, therefore Great Western hereby requests the Director to approve the application to drill the captioned well.

If you should have any questions or concerns regarding this permit, please contact me at 303.830.9893.

Respectfully,

A handwritten signature in blue ink that reads "Shannon Hartnett". The signature is fluid and cursive, with the first name and last name clearly distinguishable.

Shannon Hartnett
Permitting Agent
Great Western Oil and Gas Company, LLC

T6N, R67W, 6th P.M.

GREAT WESTERN OIL & GAS COMPANY

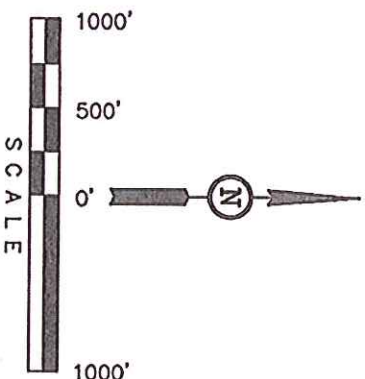
Well location, GREENSPIRE FD #22-23H, located as shown in the NW 1/4 NE 1/4 of Section 16, T6N, R67W, 6th P.M., Weld County, Colorado.

BASIS OF ELEVATION

USGS COOPERATIVE BASE NETWORK CONTROL STATION, DESIGNATION 'VERMILYEA'. NGS DATA SHEET LISTS THE NAVD 88 ELEVATION AS BEING 5026 FEET

BASIS OF BEARINGS

BASIS OF BEARINGS IS A G.P.S. OBSERVATION.



CERTIFICATE

THIS IS TO CERTIFY THAT THE ABOVE PLAT WAS PREPARED FROM FIELD NOTES OF ACTUAL SURVEYS MADE BY ME OR UNDER MY SUPERVISION AND THAT THE SAME ARE TRUE AND CORRECT TO THE BEST OF MY KNOWLEDGE AND BELIEF.

REGISTERED AND SURVEYOR
STATE OF COLORADO
09-12-12

REVISED: 07-12-12

UTAH ENGINEERING & LAND SURVEYING

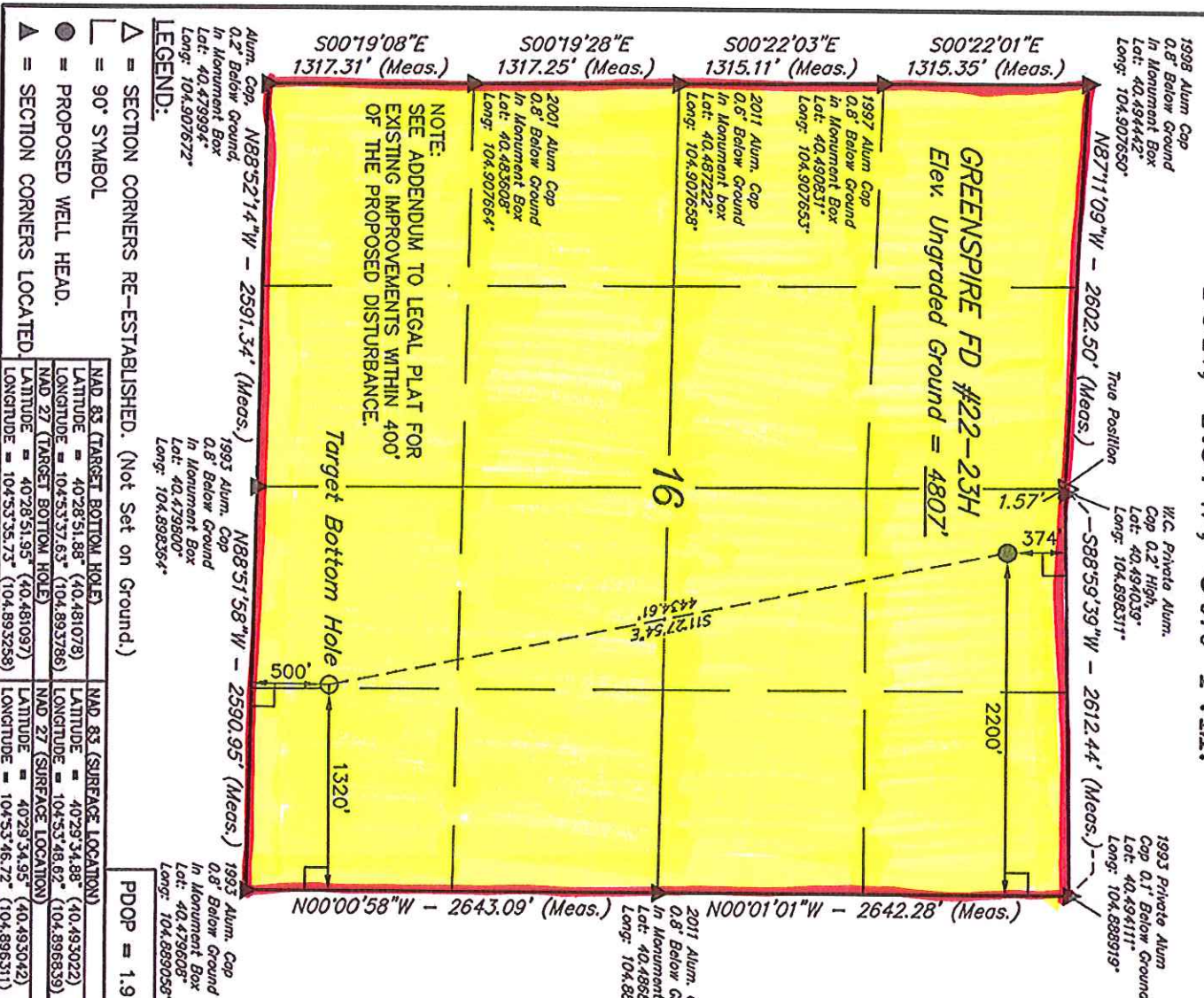
85 SOUTH 200 EAST - VERNAL, UTAH 84078

(435) 789-1017

SCALE	DATE SURVEYED:	DATE DRAWN:
1" = 1000'	06-15-12	06-25-12

PARTY	REFERENCES
Z.B. A.G. J.W.	G.L.O. PLAT

WEATHER	FILE
WARM	GREAT WESTERN OIL & GAS COMPANY



1998 Alum Cop 0.8' Below Ground In Monument Box Lat: 40.494442° Long: 104.907650°
1993 Private Alum Cop 0.2' High Lat: 40.494039° Long: 104.896311°
1993 Private Alum Cop 0.1' Below Ground Lat: 40.494117° Long: 104.889919°
2011 Alum Cop 0.6' Below Ground In Monument Box Lat: 40.487222° Long: 104.907653°
1997 Alum Cop 0.6' Below Ground In Monument Box Lat: 40.490831° Long: 104.907653°
2001 Alum Cop 0.8' Below Ground In Monument Box Lat: 40.483608° Long: 104.907654°
1993 Alum Cop 0.8' Below Ground In Monument Box Lat: 40.479600° Long: 104.896364°
1993 Alum Cop 0.8' Below Ground In Monument Box Lat: 40.479600° Long: 104.896364°
1993 Alum Cop 0.8' Below Ground In Monument Box Lat: 40.479600° Long: 104.896364°
1993 Alum Cop 0.8' Below Ground In Monument Box Lat: 40.479600° Long: 104.896364°

LEGEND:
△ = SECTION CORNERS RE-ESTABLISHED. (Not Set on Ground.)
◻ = 90° SYMBOL
● = PROPOSED WELL HEAD.
▲ = SECTION CORNERS LOCATED

NAD 83 (TARGET BOTTOM HOLE)	NAD 83 (SURFACE LOCATION)
LATITUDE = 40.2851.88° (40.481078°)	LATITUDE = 40.2934.88° (40.493022°)
LONGITUDE = 104.5337.63° (104.893786°)	LONGITUDE = 104.5348.62° (104.896839°)
NAD 27 (TARGET BOTTOM HOLE)	NAD 27 (SURFACE LOCATION)
LATITUDE = 40.2851.95° (40.481097°)	LATITUDE = 40.2934.95° (40.493042°)
LONGITUDE = 104.5335.73° (104.893289°)	LONGITUDE = 104.5346.72° (104.896311°)

PDOP = 1.9

NOTE:
SEE ADDENDUM TO LEGAL PLAT FOR EXISTING IMPROVEMENTS WITHIN 400' OF THE PROPOSED DISTURBANCE.