

WHITING OIL & GAS CORP.

ADDENDUM TO LEGAL PLAT FOR

HORSETAIL #07-0611H
SECTION 7, T10N, R57W, 6th P.M.
2450' FNL 660' FWL

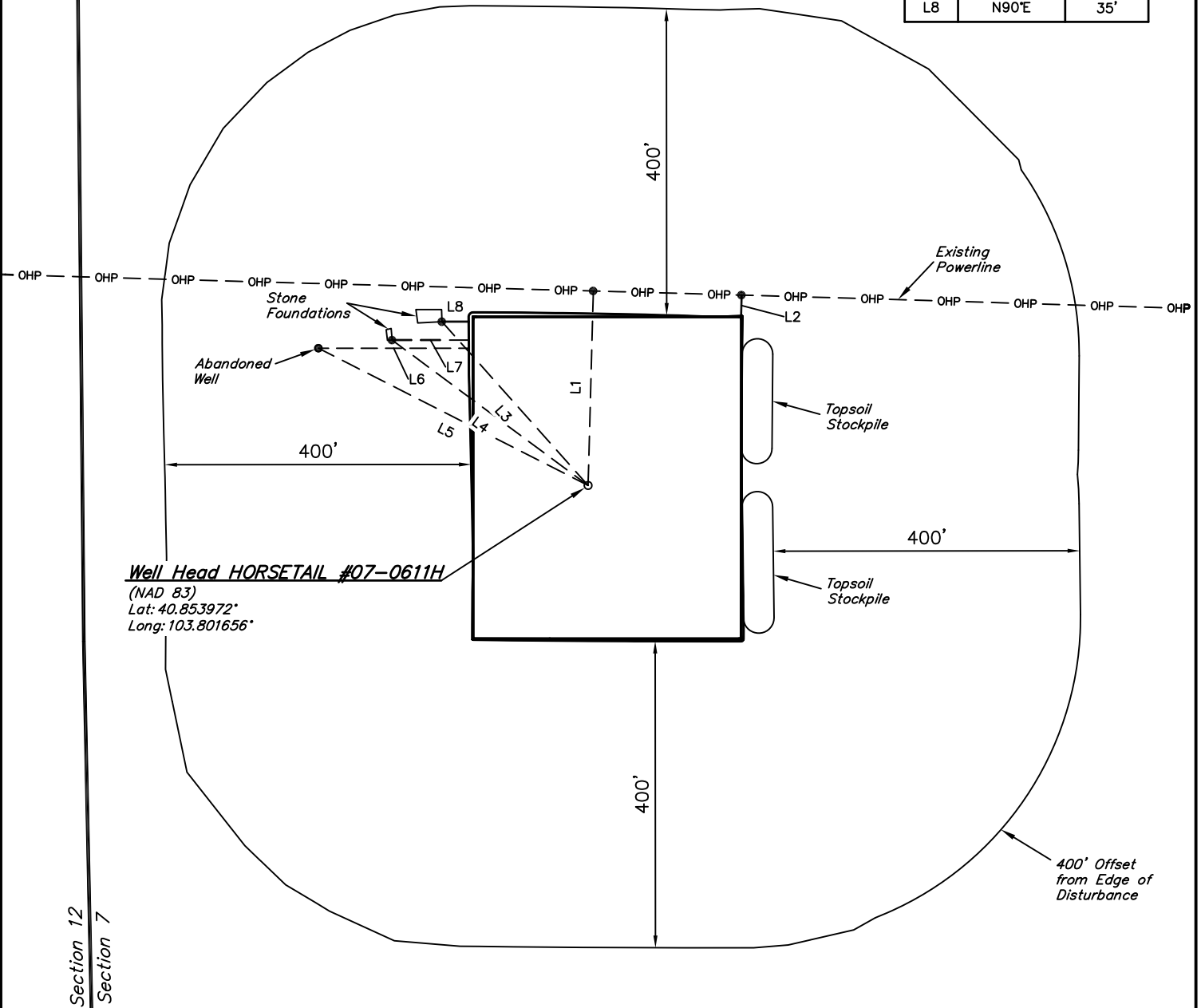
SCALE: 1" = 200'
 DATE: 05-30-12
 DRAWN BY: W.M.



R 58 W
R 57 W



LINE TABLE		
LINE	DIRECTION	LENGTH
L1	N02°E	254'
L2	N02°E	27'
L3	N42°W	286'
L4	N53°W	318'
L5	N63°W	395'
L6	N90°E	196'
L7	N90°E	100'
L8	N90°E	35'



Well Head HORSETAIL #07-0611H
 (NAD 83)
 Lat: 40.853972°
 Long: 103.801656°

Section 12
Section 7