



Lat40°, Inc. 1635 Foxtrail Drive, Suite 325 Loveland, CO 970-776-3321

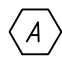
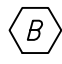
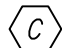
LOCATION DRAWING

PRONGHORN F-10 PAD

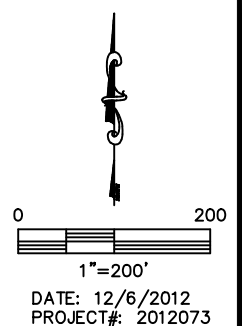
SECTION: 10
TOWNSHIP: 5N
RANGE: 61W



IMPROVEMENTS
MEASURED FROM PROPOSED PRONGHORN F-J-10HNB WELL

-  FIELD ROAD 376' N
-  APPROXIMATE GAS LINE 348' N
-  GAS MARKER 445' NE

NEAREST: BUILDING 5280'+, PUBLIC ROAD 5280'+,
ABOVE GROUND UTILITY 5280'+, RAILROAD 5280'+, PROPERTY LINE 370' N



DATE: 12/6/2012
PROJECT#: 2012073