

NOBLE ENERGY, INC.
TIMBRO LC13-73HN, LC13-47-1-HN, LC13-74HN & LC13-75-1HN
LOCATED IN WELD COUNTY, COLORADO
SECTION 24, T9N, R59W, 6th P.M.

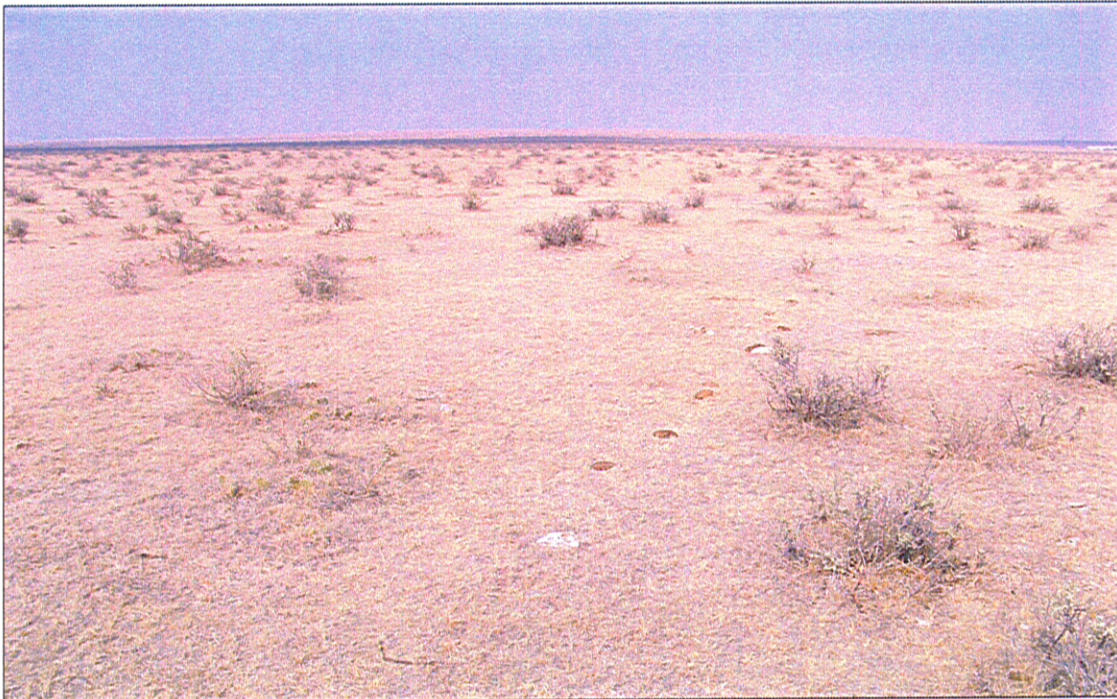


PHOTO: VIEW OF REFERENCE AREA

CAMERA ANGLE: NORTHERLY



- Since 1964 -

UELS Uintah Engineering & Land Surveying
85 South 200 East Vernal, Utah 84078
(435) 789-1017 * FAX (435) 789-1813

REFERENCE AREA PHOTO	10	05	12	PHOTO REF
	MONTH	DAY	YEAR	
TAKEN BY: Z.B.	DRAWN BY: B.D.H.		REVISED: 00-00-00	