

MULTI-WELL PLAN  
T9N, R59W, 6th P.M.

TARGET BOTTOM HOLE  
TIMBRO LC13-75-1-HN  
SEC. 13, T9N, R59W  
LAT: 40.756497'  
LONG: 103.925275'  
660' FNL 2310' FEL

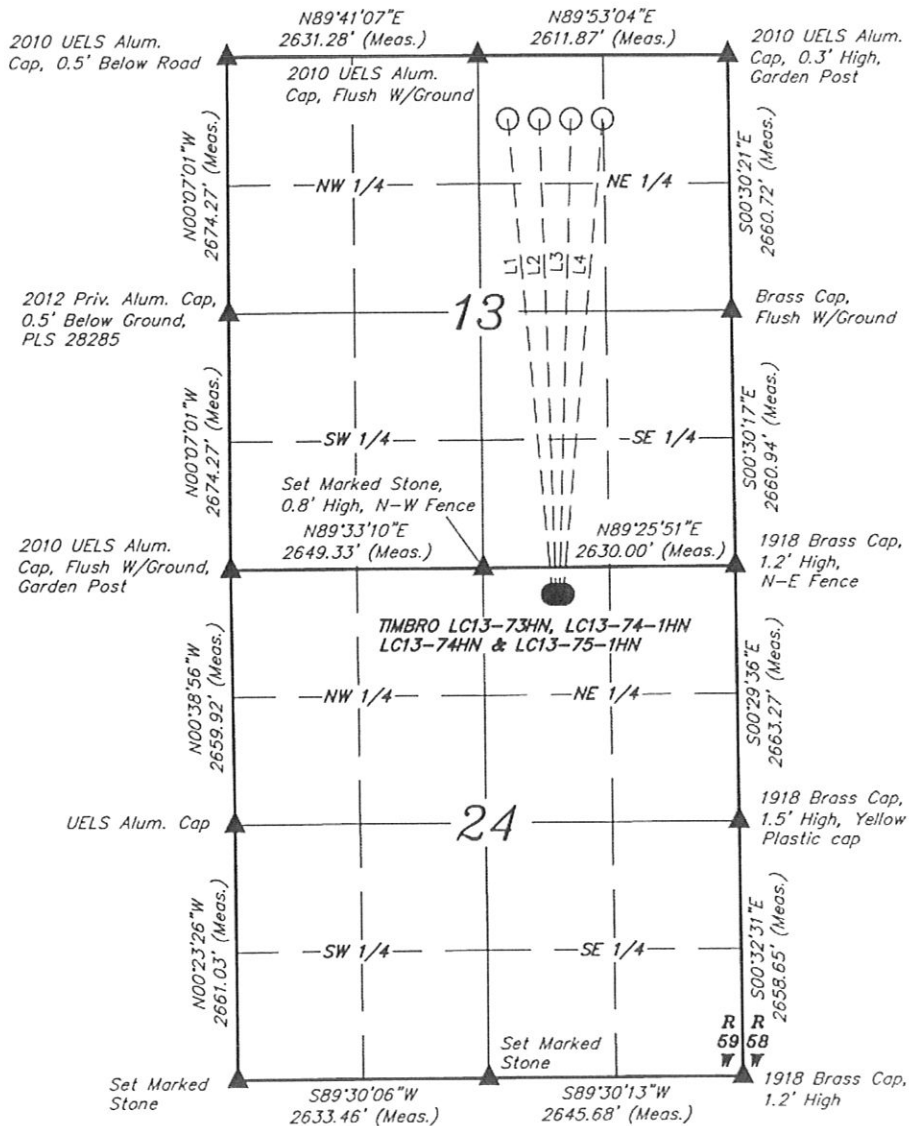
TARGET BOTTOM HOLE  
TIMBRO LC13-74HN  
SEC. 13, T9N, R59W  
LAT: 40.756500'  
LONG: 103.924086'  
660' FNL 1980' FEL

TARGET BOTTOM HOLE  
TIMBRO LC13-74-1HN  
SEC. 13, T9N, R59W  
LAT: 40.756503'  
LONG: 103.922894'  
660' FNL 1650' FEL

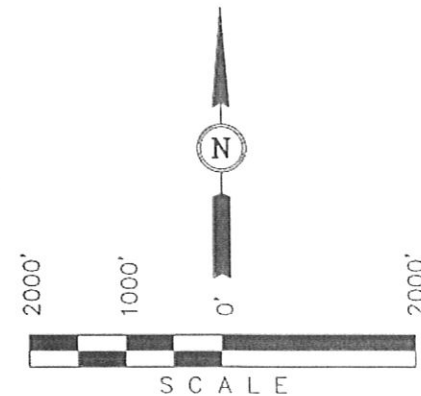
TARGET BOTTOM HOLE  
TIMBRO LC13-73HN  
SEC. 13, T9N, R59W  
LAT: 40.756506'  
LONG: 103.921703'  
660' FNL 1320' FEL

NOBLE ENERGY, INC.

Well location, TIMBRO LC13-73HN, LC13-74-1HN, LC13-74HN & LC13-75-1HN located as shown in the NW 1/4 NE 1/4 of Section 24, T9N, R59W, 6th P.M., Weld County, Colorado.



| LINE TABLE |             |          |
|------------|-------------|----------|
| LINE       | DIRECTION   | LENGTH   |
| L1         | N05°05'14"W | 4975.36' |
| L2         | N01°43'07"W | 4958.38' |
| L3         | N01°39'46"E | 4958.38' |
| L4         | N05°01'52"E | 4975.84' |



LEGEND:

- ▲ = SECTION CORNERS LOCATED.  
● = PROPOSED WELL HEAD.  
○ = TARGET BOTTOM HOLE.

UINTAH ENGINEERING & LAND SURVEYING  
85 SOUTH 200 EAST - VERNAL, UTAH 84078  
(435) 789-1017

|                                   |                            |                         |
|-----------------------------------|----------------------------|-------------------------|
| SCALE<br>1" = 1000'               | DATE SURVEYED:<br>09-03-12 | DATE DRAWN:<br>10-01-12 |
| PARTY<br>ZANE BULLARD A.G. J.M.H. | REFERENCES<br>G.L.O. PLAT  |                         |
| WEATHER<br>WARM                   | FILE<br>NOBLE ENERGY, INC. |                         |

NOBLE ENERGY, INC.

MULTI-WELL PLAN

DATE: 10-02-12

DRAWN BY: J.M.H.

TIMBRO LC13-73HN, LC13-74-1-HN,  
LC13-74HN & LC13-75-1HN  
SECTION 24, T9N, R59W, 6th P.M.

