

NOBLE ENERGY, INC.

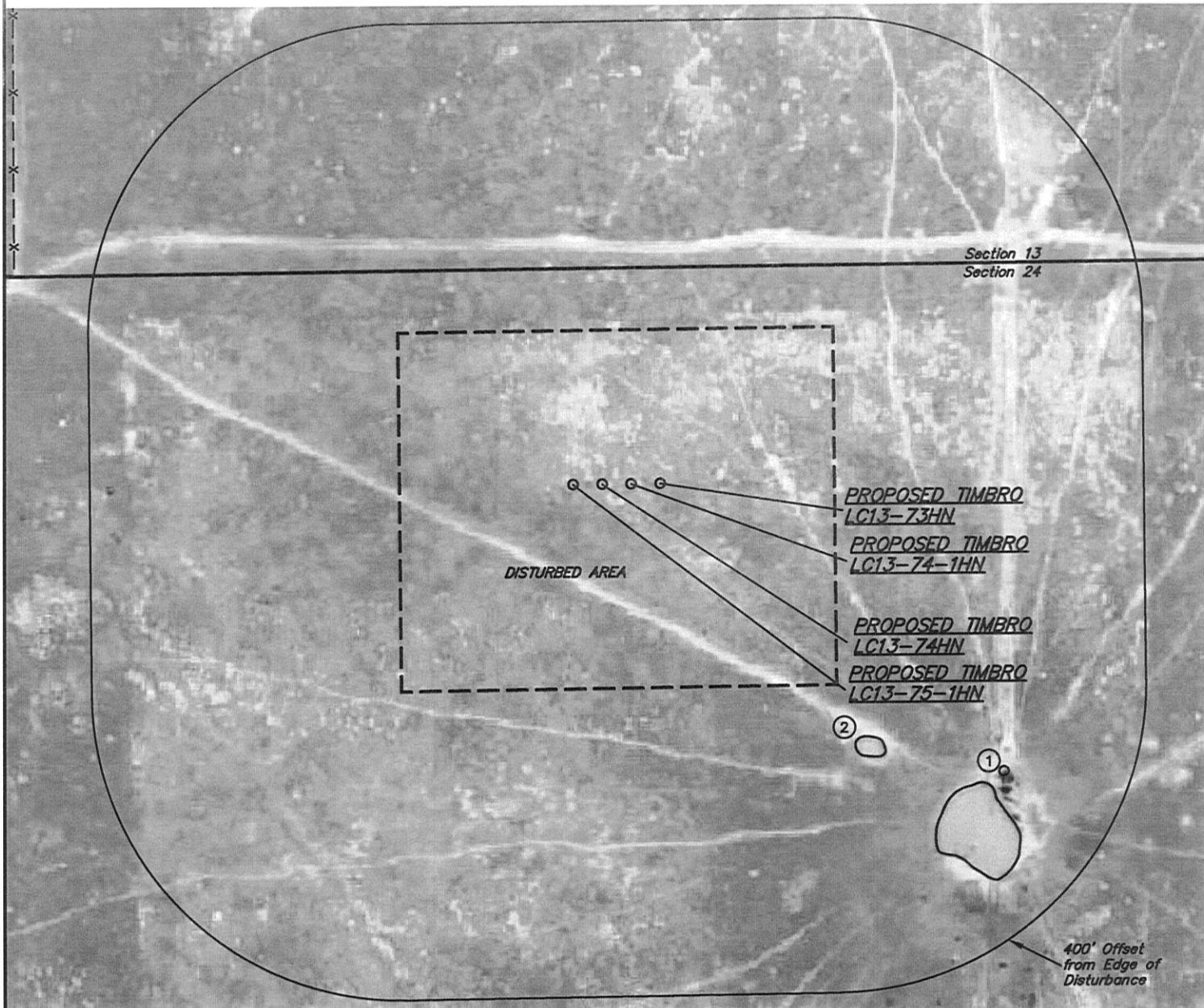
LOCATION DRAWING

TIMBRO LC13-73HN, LC13-74-1HN,
LC13-74HN & LC13-75-1HN
SECTION 24, T9N, R59W, 6th P.M.

DATE: 09-10-12

DRAWN BY: J.M.H.

REV: 10-23-12

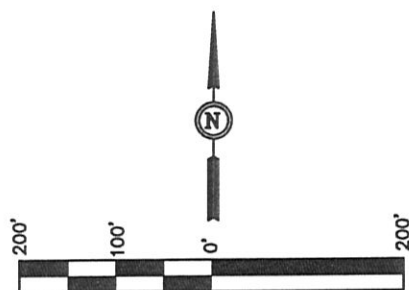


NOTE:
DIRECTION AND DISTANCE TO IMPROVEMENTS AND NEAREST FEATURES ARE FROM PROPOSED TIMBRO LC13-75-1HN.

IMPROVEMENTS:

- ① CATTLE DRINKER 671' SE
- ② LOW AREA 496' SE, 636' SE

PAD DETAILS:
WELL HEAD SPACING = 37.5'



NEAREST FEATURE: BUILDING 5280' +, PUBLIC ROAD
3394' NW (CR 191), ABOVE GROUND UTILITY 3359'
NW, RAILROAD 5280' +, PROPERTY LINE 280' N

UINTAH ENGINEERING & LAND SURVEYING
85 So. 200 East * Vernal, Utah 84078 * (435) 789-1017