

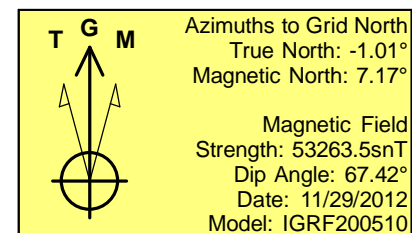
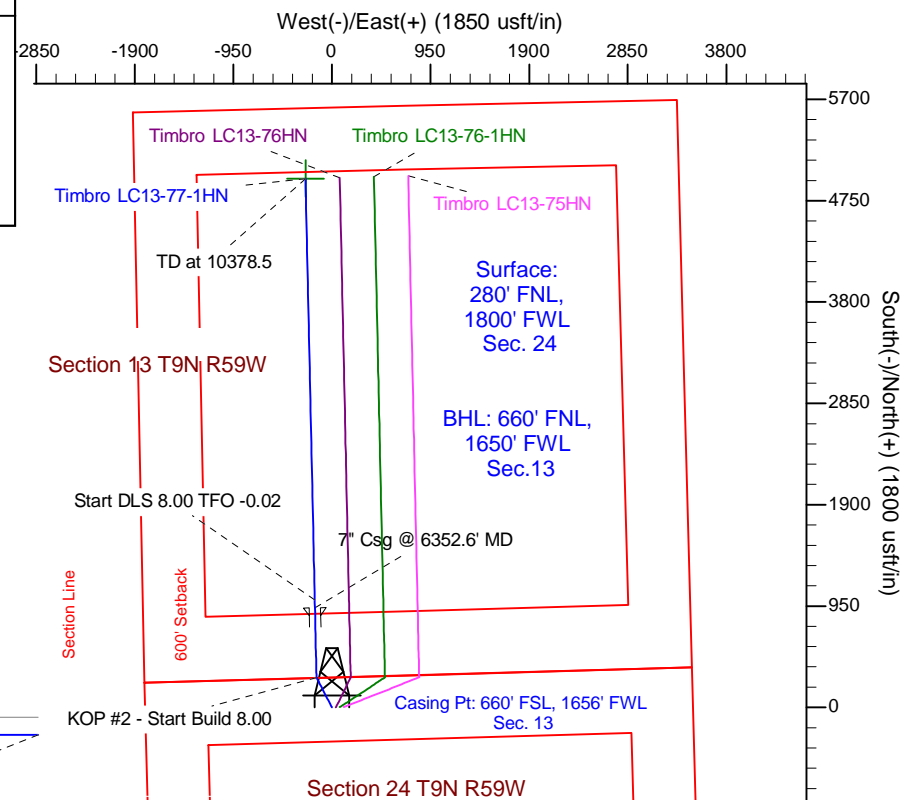
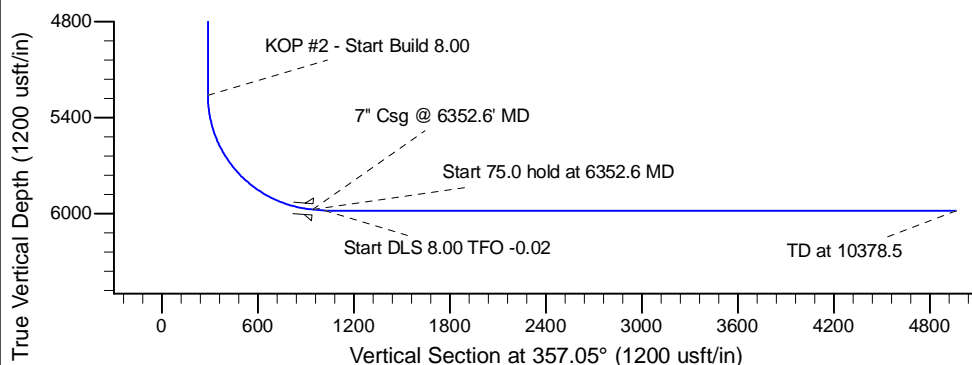
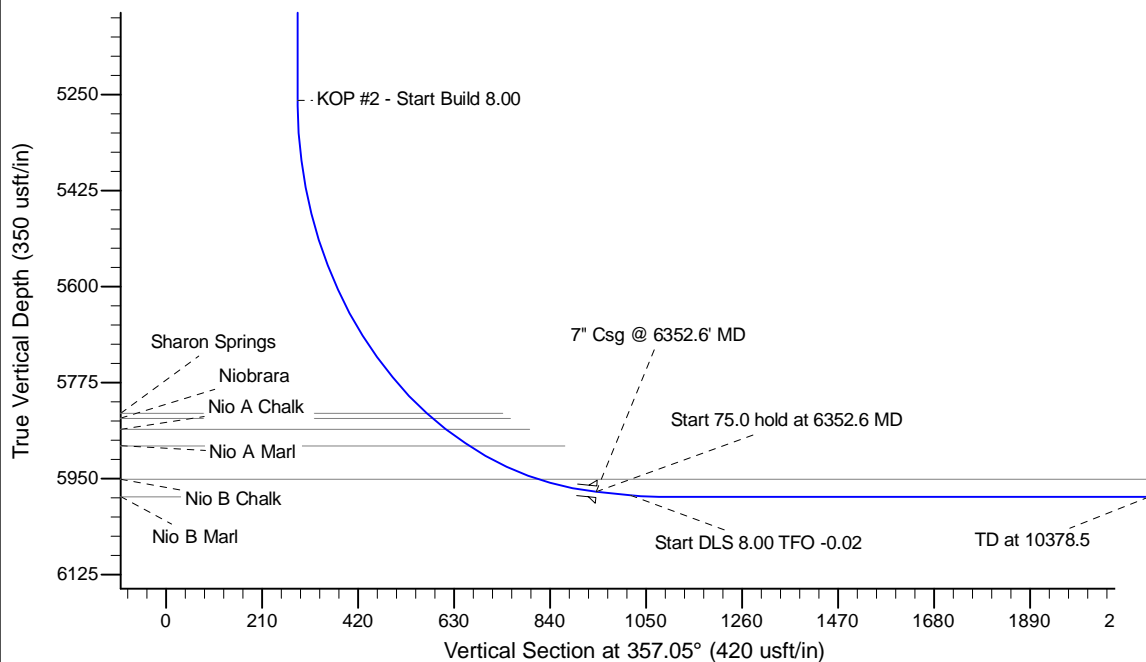
Project: Wattenberg Field
 Site: LC (Sec.24-T09N-R59W) Weld County, CO
 Well: Timbro LC13-77-1HN
 Wellbore: Original Drilling
 Design: APD - Rev 0

Northern Region Drilling

Geodetic System: US State Plane 1983
 Datum: North American Datum 1983
 Ellipsoid: GRS 1980
 Zone: Colorado Northern Zone
 System Datum: Mean Sea Level

SECTION DETAILS

Sec	MD	Inc	Azi	TVD	+N/-S	+E/-W	Dleg	TFace	VSec	Target
1	0.0	0.00	0.00	0.0	0.0	0.0	0.00	0.00	0.0	
2	2000.0	0.00	0.00	2000.0	0.0	0.0	0.00	0.00	0.0	
3	2480.1	12.00	331.82	2476.6	44.2	-23.7	2.50	331.82	45.3	
4	3525.8	12.00	331.82	3499.4	235.8	-126.3	0.00	0.00	242.0	
5	4005.9	0.00	0.00	3976.0	280.0	-150.0	2.50	180.00	287.3	
6	5290.1	0.00	0.00	5260.2	280.0	-150.0	0.00	0.00	287.3	
7	6352.6	85.00	358.71	5973.7	933.6	-164.7	8.00	358.71	940.8	
8	6427.6	85.00	358.71	5980.2	1008.3	-166.4	0.00	0.00	1015.5	
9	6490.1	90.00	358.71	5983.0	1070.7	-167.8	8.00	-0.02	1077.9	
10	10378.5	90.00	358.71	5983.0	4958.1	-255.5	0.00	0.00	4964.7	Timbro LC13-77-1HN BHL 660'FNL, 1650'FWL



WELL DETAILS: Timbro LC13-77-1HN

Ground Level:	4860.0
North	1517321.74
East	3435216.27
Latitude	40.742856
Longitude	-103.929317

Plan: APD - Rev 0 (Timbro LC13-77-1HN/Original Drilling)

Created By: Carrie Willers	Date: 14:02, November 30 2012
Checked: _____	Date: _____
Reviewed: _____	Date: _____
Approved: _____	Date: _____