

MULTI-WELL PLAN
T9N, R59W, 6th P.M.

TARGET BOTTOM HOLE
TIMBRO LC13-75-1-HN
SEC. 13, T9N, R59W
LAT: 40.756497'
LONG: 103.925275'
660' FNL 2310' FEL

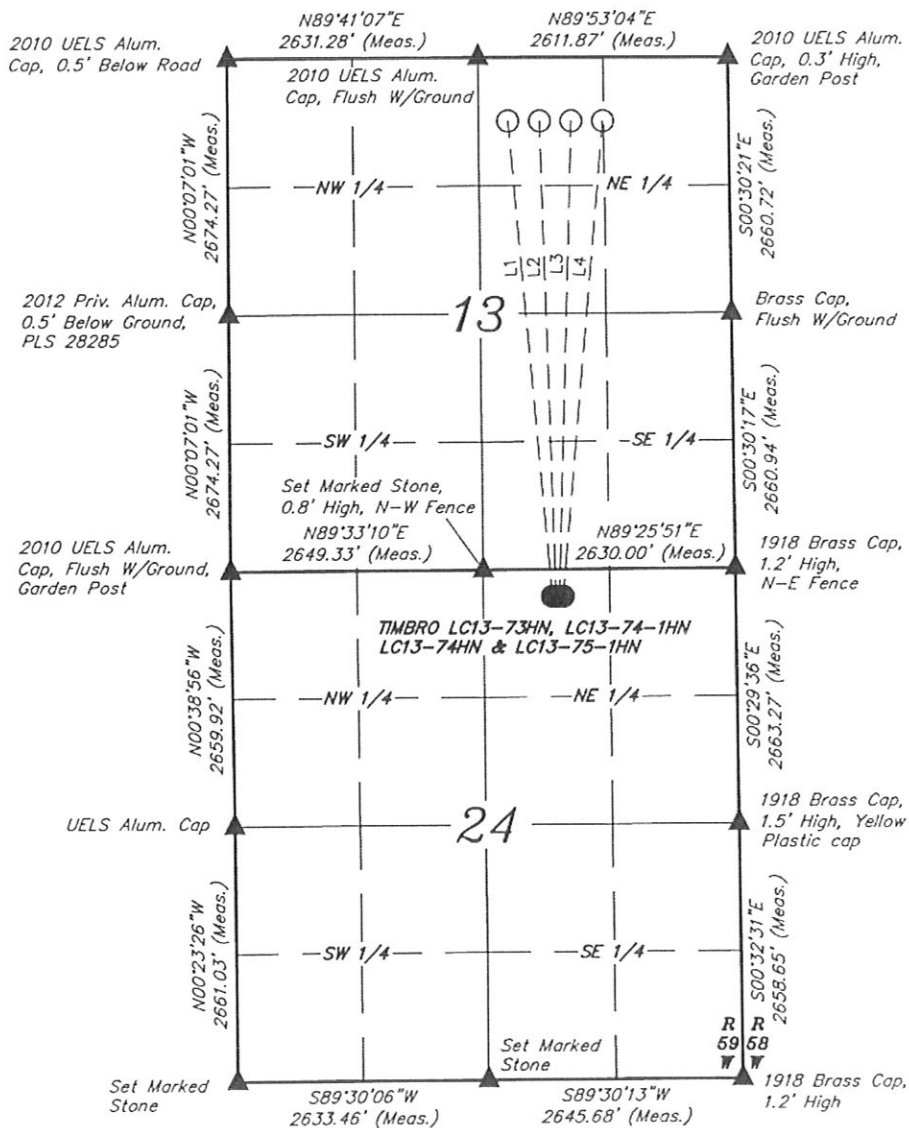
TARGET BOTTOM HOLE
TIMBRO LC13-74HN
SEC. 13, T9N, R59W
LAT: 40.756500'
LONG: 103.924086'
660' FNL 1980' FEL

TARGET BOTTOM HOLE
TIMBRO LC13-74-1HN
SEC. 13, T9N, R59W
LAT: 40.756503'
LONG: 103.922894'
660' FNL 1650' FEL

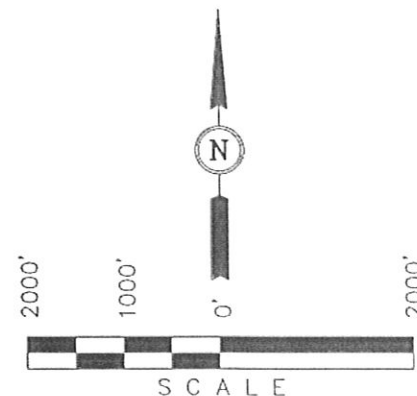
TARGET BOTTOM HOLE
TIMBRO LC13-73HN
SEC. 13, T9N, R59W
LAT: 40.756506'
LONG: 103.921703'
660' FNL 1320' FEL

NOBLE ENERGY, INC.

Well location, TIMBRO LC13-73HN, LC13-74-1HN, LC13-74HN & LC13-75-1HN located as shown in the NW 1/4 NE 1/4 of Section 24, T9N, R59W, 6th P.M., Weld County, Colorado.



LINE TABLE		
LINE	DIRECTION	LENGTH
L1	N05°05'14"W	4975.36'
L2	N01°43'07"W	4958.38'
L3	N01°39'46"E	4958.38'
L4	N05°01'52"E	4975.84'



LEGEND:

- ▲ = SECTION CORNERS LOCATED.
● = PROPOSED WELL HEAD.
○ = TARGET BOTTOM HOLE.

UINTAH ENGINEERING & LAND SURVEYING
85 SOUTH 200 EAST - VERNAL, UTAH 84078
(435) 789-1017

SCALE 1" = 1000'	DATE SURVEYED: 09-03-12	DATE DRAWN: 10-01-122
PARTY ZANE BULLARD A.G. J.M.H.	REFERENCES G.L.O. PLAT	
WEATHER WARM	FILE NOBLE ENERGY, INC.	

NOBLE ENERGY, INC.

MULTI-WELL PLAN

DATE: 10-02-12

DRAWN BY: J.M.H.

TIMBRO LC13-73HN, LC13-74-1-HN,
LC13-74HN & LC13-75-1HN
SECTION 24, T9N, R59W, 6th P.M.

