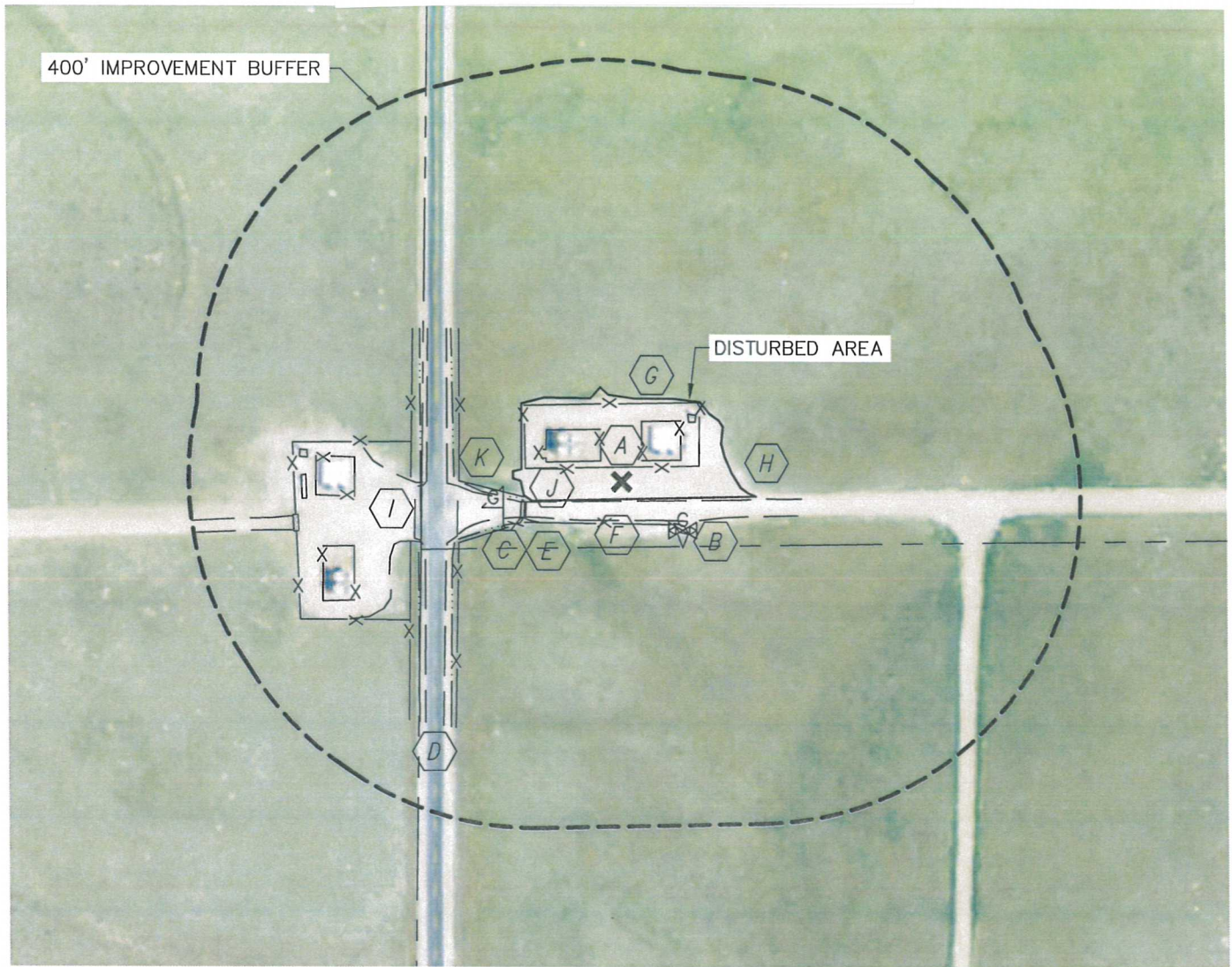


DF RANCH 1161-9-24 TANK

Lat40°, Inc. 1635 Foxtrail Drive, Suite 325 Loveland, CO 970-776-3321

PRODUCTION FACILITY AS-BUILT DF RANCH 1161-9-24

SECTION: 9
TOWNSHIP: 11N
RANGE: 61W



REFERENCE POINT LOCATION:

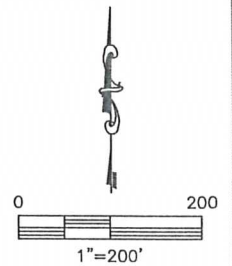
LAT: 40.93617°N
LONG: 104.21913°W
ELEV: 5288'
PDOP: 2.6
DATE: 11/9/2012
OPERATOR: ADAM KELLY
1/41/4: SW1/4NW1/4
FNL: 2651'
FWL: 247'
DISTANCE TO WELL: ±921'
ASSOCIATED NEW WELLS:
NONE
ASSOCIATED EXISTING WELLS:
DF RANCH 1161-9-24
DF RANCH 1161-9-32

IMPROVEMENTS:

- | | | | |
|--|---|--|------------------------------|
| | EX. PRODUCTION EQUIPMENT (NOBLE) 35', 83' & 110' NE, 36' NW, 330', 389' & 390' W, 340' SW | | CULVERT 248' W |
| | GAS VALVE 95' SE | | BARROW DITCH 123' SW, 248' W |
| | GAS MARKER 157' SW | | |
| | CR 89 215' W | | |
| | CATTLE GUARD 121' & 402' SW | | |
| | FIELD ROAD 24' S, 409' SW | | |
| | FENCE 18' & 95' N, 52' S, 122', 132' & 272' SW, 201', 260' & 404' W | | |
| | EDGE OF DISTURBANCE 21' S, 103' N, 125' W, 136' W | | |

LEGEND
X - REFERENCE POINT
ALL DISTANCES ARE APPROXIMATE.

NEAREST: BUILDING (MISSILE SILO) 3280' NE,
PUBLIC ROAD (CR 89) 215' W, ABOVE GROUND UTILITY 3700' N,
RAILROAD 5280'+, PROPERTY LINE 247' W



DATE: 11/29/2012
PROJECT#: 2012169