

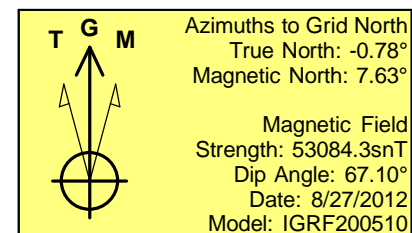
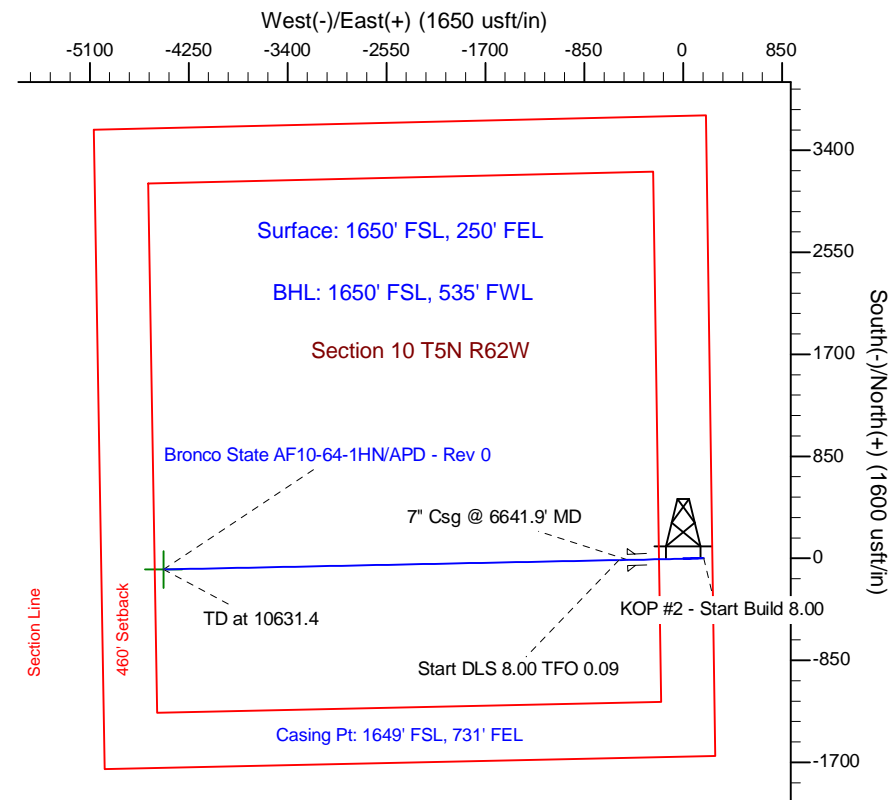
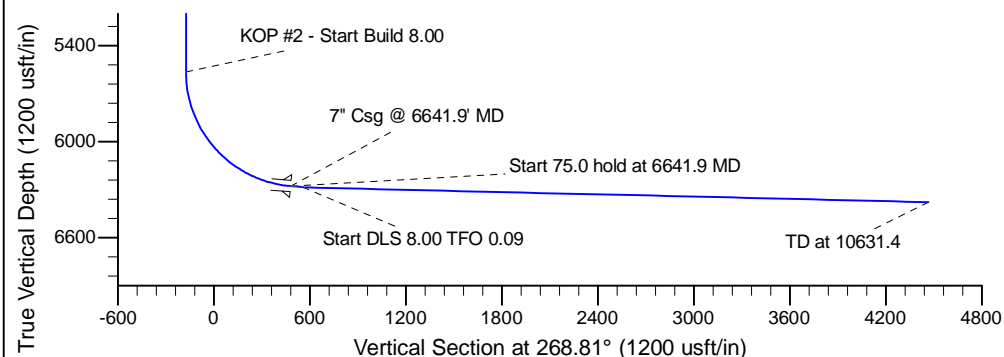
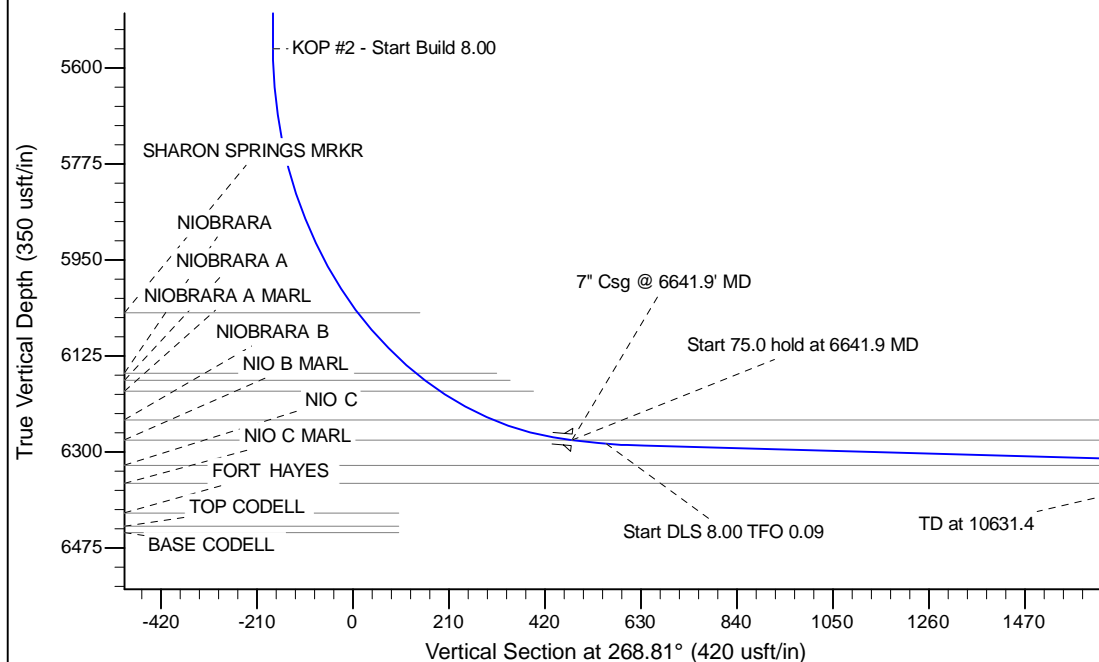
Project: Wattenberg Field
Site: AF (Sec.-10-T05N-R62W) Weld County, CO
Well: Bronco State AF10-64-1HN
Wellbore: Original Drilling
Design: APD - Rev 0

Northern Region Drilling

Geodetic System: US State Plane 1983
Datum: North American Datum 1983
Ellipsoid: GRS 1980
Zone: Colorado Northern Zone
System Datum: Mean Sea Level

SECTION DETAILS

Sec	MD	Inc	Azi	TVD	+N/-S	+E/-W	Dleg	TFace	V Sect	Target
1	0.0	0.00	0.00	0.0	0.0	0.0	0.00	0.00	0.0	
2	2000.0	0.00	0.00	2000.0	0.0	0.0	0.00	0.00	0.0	
3	2480.1	12.00	90.00	2476.6	0.0	50.1	2.50	90.00	-50.1	
4	2839.8	12.00	90.00	2828.4	0.0	124.9	0.00	0.00	-124.9	
5	3319.9	0.00	0.00	3305.0	0.0	175.0	2.50	180.00	-175.0	
6	5579.4	0.00	0.00	5564.5	0.0	175.0	0.00	0.00	-175.0	
7	6641.9	85.00	268.85	6278.0	-13.1	-478.6	8.00	268.85	478.8	
8	6716.9	85.00	268.85	6284.5	-14.6	-553.3	0.00	0.00	553.5	
9	6762.5	88.65	268.86	6287.1	-15.5	-598.9	8.00	0.09	599.1	
10	10631.4	88.65	268.86	6378.3	-92.8	-4465.9	0.00	0.00	4466.8	Bronco State AF10-64-1HN BHL 1650'FSL, 535'FWL



WELL DETAILS: Bronco State AF10-64-1HN

Ground Level: 4646.0	Latitude	Longitude
Northing 1395127.58	Easting 3333893.32	40° 24' 42.588 N 104° 18' 3.240 W

Plan: APD - Rev 0 (Bronco State AF10-64-1HN/Original Drilling)

Created By: Carrie Willers	Date: 13:28, August 27 2012
Checked: _____	Date: _____
Reviewed: _____	Date: _____
Approved: _____	Date: _____