

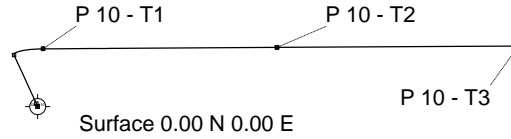
TEKTON WINDSOR, LLC

Location	Windsor, CO, USA	Slot	Slot #10
Field	Windsor Project	Well	PAVISTMA 10 #1-3-32-090-8-CH
Installation	Pavistma	Wellbore	PAVISTMA 10 #1-3-32-090-8-CH (PWB)

Scale 1 cm = 800 ft

East (feet) ->

-3200 -1600 0 1600 3200 4800 6400 8000 9600 11200



North (feet) ^
3200
1600
0
-1600
Scale 1 cm = 800 ft

WELL PROFILE DATA

Point	MD	Inc	Azi	TVD	North	East	deg/100ft	V. Sect
Tie on	13.00	0.00	0.00	13.00	0.00	0.00	0.00	0.00
KOP	1013.00	0.00	0.00	1013.00	0.00	0.00	0.00	0.00
End of Build	1606.15	11.86	335.36	1601.92	55.61	-25.51	2.00	-18.37
End of Hold	6720.17	11.86	335.36	6606.72	1011.16	-463.90	0.00	-333.97
Target P 10 - T1	7668.64	90.00	89.62	7217.00	1131.76	106.23	10.00	246.76
Target P 10 - T2	12254.47	90.00	89.62	7217.00	1161.83	4691.96	0.00	4800.33
End of Turn	12258.36	90.00	89.70	7217.00	1161.85	4695.85	2.00	4804.20
T.D. & Target P 10 - T3	16986.70	90.00	89.70	7217.00	1186.42	9424.12	0.00	9498.51

Tie on - 0.00 Inc, 13.00 MD, 13.00 TVD, 0.00 VS

3DS Kick off Point - 0.00 Inc, 1013.00 MD, 1013.00 TVD, 0.00 VS

End of Build - 11.86 Inc, 1606.15 MD, 1601.92 TVD, -18.37 VS

End of Hold - 11.86 Inc, 6720.17 MD, 6606.72 TVD, -333.97 VS

3DJ Kick off Point - 90.00 Inc, 12254.47 MD, 7217.00 TVD, 4800.33 VS

T.D. & End of Hold - 7217.00 TVD, 1186.42 N 9424.12 E

P 10 - T1

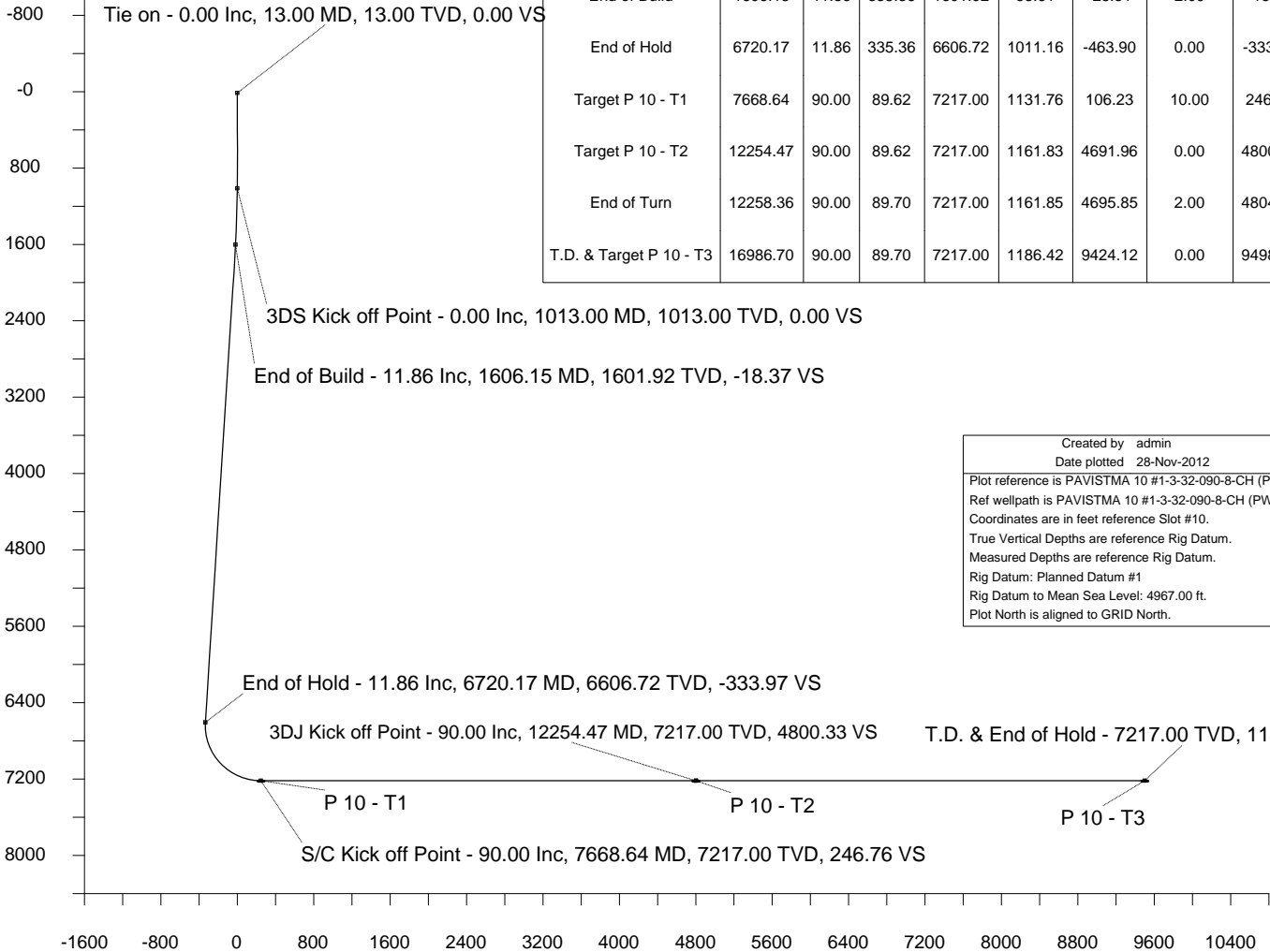
P 10 - T2

P 10 - T3

S/C Kick off Point - 90.00 Inc, 7668.64 MD, 7217.00 TVD, 246.76 VS

Created by admin
Date plotted 28-Nov-2012
Plot reference is PAVISTMA 10 #1-3-32-090-8-CH (PWB).
Ref wellpath is PAVISTMA 10 #1-3-32-090-8-CH (PWP#1).
Coordinates are in feet reference Slot #10.
True Vertical Depths are reference Rig Datum.
Measured Depths are reference Rig Datum.
Rig Datum: Planned Datum #1
Rig Datum to Mean Sea Level: 4967.00 ft.
Plot North is aligned to GRID North.

Scale 1 cm = 400 ft
True Vertical Depth (feet) <-



Scale 1 cm = 400 ft

Vertical Section (feet) ->

Azimuth 82.82 with reference 0.00 N, 0.00 E from Slot #10



SYSDRILL
Well Design Combined Report
Wellbore: PAVISTMA 10 #1-3-32-090-8-CH (PWB)
Wellpath: PAVISTMA 10 #1-3-32-090-8-CH (PWP#1)

Wellhead Details

Name	Northing	Easting	Latitude	Longitude	North	East
Slot #10	1404450.3098	3160118.7426	N40 26 31.8917	W104 55 29.0160	128.26N	5.47W

Site Details

Name	Northing	Easting	Coord System Name	North Alignment
Pavistma	1404322.0586	3160124.2135	CO83-NF on NORTH AMERICAN DATUM 1983 datum	Grid

Summary Wellpath

MD[ft]	Inc[deg]	Azi[deg]	TVD[ft]	North[ft]	East[ft]	Dogleg [deg/100ft]	Vertical Section[ft]	Northing	Easting
13.00	0.00	0.000	13.00	0.00N	0.00E		0.00	1404450.31	3160118.74
1013.00	0.00	0.000	1013.00	0.00N	0.00E	==>	0.00	1404450.31	3160118.74
1606.15	11.86	335.360	1601.92	55.61N	25.51W	2.00	-18.37	1404505.92	3160093.23
6720.17	11.86	335.360	6606.72	1011.16N	463.90W	==>	-333.97	1405461.43	3159654.86
7668.64	90.00	89.620	7217.00	1131.76N	106.23E	10.00	246.76	1405582.03	3160224.97
12254.47	90.00	89.620	7217.00	1161.83N	4691.96E	==>	4800.33	1405612.09	3164810.51
12258.36	90.00	89.700	7217.00	1161.85N	4695.85E	2.00	4804.20	1405612.11	3164814.41
16986.70	90.00	89.700	7217.00	1186.42N	9424.12E	==>	9498.51	1405636.68	3169542.49

Interpolated Wellpath

MD[ft]	Inc[deg]	Azi[deg]	TVD[ft]	North[ft]	East[ft]	Dogleg [deg/100ft]	Vertical Section[ft]	Northing	Easting
0.00	0.00	0.000	0.00	0.00N	0.00E		0.00	1404450.31	3160118.74
13.00	0.00	0.000	13.00	0.00N	0.00E	==>	0.00	1404450.31	3160118.74
100.00	0.00	0.000	100.00	0.00N	0.00E	==>	0.00	1404450.31	3160118.74
200.00	0.00	0.000	200.00	0.00N	0.00E	==>	0.00	1404450.31	3160118.74
300.00	0.00	0.000	300.00	0.00N	0.00E	==>	0.00	1404450.31	3160118.74
400.00	0.00	0.000	400.00	0.00N	0.00E	==>	0.00	1404450.31	3160118.74
500.00	0.00	0.000	500.00	0.00N	0.00E	==>	0.00	1404450.31	3160118.74
600.00	0.00	0.000	600.00	0.00N	0.00E	==>	0.00	1404450.31	3160118.74
700.00	0.00	0.000	700.00	0.00N	0.00E	==>	0.00	1404450.31	3160118.74
800.00	0.00	0.000	800.00	0.00N	0.00E	==>	0.00	1404450.31	3160118.74
900.00	0.00	0.000	900.00	0.00N	0.00E	==>	0.00	1404450.31	3160118.74
1000.00	0.00	0.000	1000.00	0.00N	0.00E	==>	0.00	1404450.31	3160118.74
1013.00	0.00	0.000	1013.00	0.00N	0.00E	==>	0.00	1404450.31	3160118.74
1100.00	1.74	335.360	1099.99	1.20N	0.55W	2.00	-0.40	1404451.51	3160118.19
1200.00	3.74	335.360	1199.87	5.55N	2.54W	2.00	-1.83	1404455.85	3160116.20
1300.00	5.74	335.360	1299.52	13.06N	5.99W	2.00	-4.31	1404463.36	3160112.75
1400.00	7.74	335.360	1398.82	23.72N	10.88W	2.00	-7.84	1404474.03	3160107.86
1500.00	9.74	335.360	1497.66	37.53N	17.22W	2.00	-12.40	1404487.84	3160101.52
1600.00	11.74	335.360	1595.90	54.47N	24.99W	2.00	-17.99	1404504.78	3160093.75
1606.15	11.86	335.360	1601.92	55.61N	25.51W	2.00	-18.37	1404505.92	3160093.23
1700.00	11.86	335.360	1693.77	73.15N	33.56W	==>	-24.16	1404523.46	3160085.18
1800.00	11.86	335.360	1791.63	91.83N	42.13W	==>	-30.33	1404542.14	3160076.61
1900.00	11.86	335.360	1889.49	110.52N	50.70W	==>	-36.50	1404560.82	3160068.04
2000.00	11.86	335.360	1987.36	129.20N	59.28W	==>	-42.67	1404579.51	3160059.47
2100.00	11.86	335.360	2085.22	147.89N	67.85W	==>	-48.84	1404598.19	3160050.90
2200.00	11.86	335.360	2183.09	166.57N	76.42W	==>	-55.02	1404616.88	3160042.33
2300.00	11.86	335.360	2280.95	185.26N	84.99W	==>	-61.19	1404635.56	3160033.75
2400.00	11.86	335.360	2378.82	203.94N	93.56W	==>	-67.36	1404654.24	3160025.18
2500.00	11.86	335.360	2476.68	222.63N	102.14W	==>	-73.53	1404672.93	3160016.61
2600.00	11.86	335.360	2574.54	241.31N	110.71W	==>	-79.70	1404691.61	3160008.04
2700.00	11.86	335.360	2672.41	260.00N	119.28W	==>	-85.87	1404710.30	3159999.47
2800.00	11.86	335.360	2770.27	278.68N	127.85W	==>	-92.04	1404728.98	3159990.89
2900.00	11.86	335.360	2868.14	297.37N	136.43W	==>	-98.21	1404747.66	3159982.32
3000.00	11.86	335.360	2966.00	316.05N	145.00W	==>	-104.39	1404766.35	3159973.75
3100.00	11.86	335.360	3063.87	334.74N	153.57W	==>	-110.56	1404785.03	3159965.18
3200.00	11.86	335.360	3161.73	353.42N	162.14W	==>	-116.73	1404803.72	3159956.61
3300.00	11.86	335.360	3259.59	372.10N	170.71W	==>	-122.90	1404822.40	3159948.03
3400.00	11.86	335.360	3357.46	390.79N	179.29W	==>	-129.07	1404841.08	3159939.46
3500.00	11.86	335.360	3455.32	409.47N	187.86W	==>	-135.24	1404859.77	3159930.89
3600.00	11.86	335.360	3553.19	428.16N	196.43W	==>	-141.41	1404878.45	3159922.32
3700.00	11.86	335.360	3651.05	446.84N	205.00W	==>	-147.59	1404897.14	3159913.75
3800.00	11.86	335.360	3748.91	465.53N	213.58W	==>	-153.76	1404915.82	3159905.17
3900.00	11.86	335.360	3846.78	484.21N	222.15W	==>	-159.93	1404934.50	3159896.60
4000.00	11.86	335.360	3944.64	502.90N	230.72W	==>	-166.10	1404953.19	3159888.03
4100.00	11.86	335.360	4042.51	521.58N	239.29W	==>	-172.27	1404971.87	3159879.46
4200.00	11.86	335.360	4140.37	540.27N	247.87W	==>	-178.44	1404990.56	3159870.89
4300.00	11.86	335.360	4238.24	558.95N	256.44W	==>	-184.61	1405009.24	3159862.32
4400.00	11.86	335.360	4336.10	577.64N	265.01W	==>	-190.78	1405027.92	3159853.74
4500.00	11.86	335.360	4433.96	596.32N	273.58W	==>	-196.96	1405046.61	3159845.17
4600.00	11.86	335.360	4531.83	615.01N	282.15W	==>	-203.13	1405065.29	3159836.60
4700.00	11.86	335.360	4629.69	633.69N	290.73W	==>	-209.30	1405083.98	3159828.03

All data is in Feet unless otherwise stated
Coordinates are from Slot MD's are from Rig and TVD's are from Rig (Planned Datum #1 4967.0ft above Mean Sea Level)
Vertical Section is from 0.00N 0.00E on azimuth 82.820 degrees
Bottom hole distance is 9498.51 Feet on azimuth 82.82 degrees from Wellhead
Calculation method uses Minimum Curvature method
Prepared by Peterson Energy
Date Printed: 28-Nov-2012



SYSDRILL
Well Design Combined Report
Wellbore: PAVISTMA 10 #1-3-32-090-8-CH (PWB)
Wellpath: PAVISTMA 10 #1-3-32-090-8-CH (PWP#1)

Interpolated Wellpath

MD[ft]	Inc[deg]	Azi[deg]	TVD[ft]	North[ft]	East[ft]	Dogleg [deg/100ft]	Vertical Section[ft]	Northing	Easting
4800.00	11.86	335.360	4727.56	652.38N	299.30W	==>	-215.47	1405102.66	3159819.46
4900.00	11.86	335.360	4825.42	671.06N	307.87W	==>	-221.64	1405121.34	3159810.88
5000.00	11.86	335.360	4923.28	689.75N	316.44W	==>	-227.81	1405140.03	3159802.31
5100.00	11.86	335.360	5021.15	708.43N	325.02W	==>	-233.98	1405158.71	3159793.74
5200.00	11.86	335.360	5119.01	727.12N	333.59W	==>	-240.15	1405177.40	3159785.17
5300.00	11.86	335.360	5216.88	745.80N	342.16W	==>	-246.33	1405196.08	3159776.60
5400.00	11.86	335.360	5314.74	764.48N	350.73W	==>	-252.50	1405214.76	3159768.02
5500.00	11.86	335.360	5412.61	783.17N	359.30W	==>	-258.67	1405233.45	3159759.45
5600.00	11.86	335.360	5510.47	801.85N	367.88W	==>	-264.84	1405252.13	3159750.88
5700.00	11.86	335.360	5608.33	820.54N	376.45W	==>	-271.01	1405270.82	3159742.31
5800.00	11.86	335.360	5706.20	839.22N	385.02W	==>	-277.18	1405289.50	3159733.74
5900.00	11.86	335.360	5804.06	857.91N	393.59W	==>	-283.35	1405308.18	3159725.17
6000.00	11.86	335.360	5901.93	876.59N	402.17W	==>	-289.52	1405326.87	3159716.59
6100.00	11.86	335.360	5999.79	895.28N	410.74W	==>	-295.70	1405345.55	3159708.02
6200.00	11.86	335.360	6097.65	913.96N	419.31W	==>	-301.87	1405364.24	3159699.45
6300.00	11.86	335.360	6195.52	932.65N	427.88W	==>	-308.04	1405382.92	3159690.88
6400.00	11.86	335.360	6293.38	951.33N	436.45W	==>	-314.21	1405401.60	3159682.31
6500.00	11.86	335.360	6391.25	970.02N	445.03W	==>	-320.38	1405420.29	3159673.73
6600.00	11.86	335.360	6489.11	988.70N	453.60W	==>	-326.55	1405438.97	3159665.16
6700.00	11.86	335.360	6586.98	1007.39N	462.17W	==>	-332.72	1405457.66	3159656.59
6720.17	11.86	335.360	6606.72	1011.16N	463.90W	==>	-333.97	1405461.43	3159654.86
6800.00	11.28	15.860	6685.05	1026.15N	465.19W	10.00	-333.37	1405476.42	3159653.57
6900.00	16.97	50.760	6782.15	1044.83N	451.18W	10.00	-317.14	1405495.10	3159667.58
7000.00	25.42	65.870	6875.37	1062.89N	420.21W	10.00	-284.16	1405513.16	3159698.55
7100.00	34.67	73.550	6961.87	1079.76N	373.22W	10.00	-235.43	1405530.03	3159745.53
7200.00	44.22	78.270	7039.02	1094.94N	311.65W	10.00	-172.44	1405545.21	3159807.11
7300.00	53.90	81.600	7104.49	1107.96N	237.35W	10.00	-97.10	1405558.23	3159881.40
7400.00	63.65	84.180	7156.27	1118.44N	152.60W	10.00	-11.70	1405568.70	3159966.15
7500.00	73.45	86.360	7192.80	1126.04N	59.96W	10.00	81.16	1405576.30	3160058.79
7600.00	83.26	88.330	7212.97	1130.54N	37.76E	10.00	178.67	1405580.81	3160156.50
7668.64	90.00	89.620	7217.00	1131.76N	106.23E	10.00	246.76	1405582.03	3160224.97
7700.00	90.00	89.620	7217.00	1131.97N	137.58E	==>	277.90	1405582.23	3160256.32
7800.00	90.00	89.620	7217.00	1132.62N	237.58E	==>	377.19	1405582.89	3160356.32
7900.00	90.00	89.620	7217.00	1133.28N	337.58E	==>	476.49	1405583.54	3160456.31
8000.00	90.00	89.620	7217.00	1133.93N	437.58E	==>	575.79	1405584.20	3160556.30
8100.00	90.00	89.620	7217.00	1134.59N	537.58E	==>	675.08	1405584.86	3160656.30
8200.00	90.00	89.620	7217.00	1135.25N	637.57E	==>	774.38	1405585.51	3160756.29
8300.00	90.00	89.620	7217.00	1135.90N	737.57E	==>	873.68	1405586.17	3160856.29
8400.00	90.00	89.620	7217.00	1136.56N	837.57E	==>	972.97	1405586.82	3160956.28
8500.00	90.00	89.620	7217.00	1137.21N	937.57E	==>	1072.27	1405587.48	3161056.27
8600.00	90.00	89.620	7217.00	1137.87N	1037.57E	==>	1171.57	1405588.13	3161156.27
8700.00	90.00	89.620	7217.00	1138.52N	1137.56E	==>	1270.86	1405588.79	3161256.26
8800.00	90.00	89.620	7217.00	1139.18N	1237.56E	==>	1370.16	1405589.44	3161356.25
8900.00	90.00	89.620	7217.00	1139.84N	1337.56E	==>	1469.46	1405590.10	3161456.25
9000.00	90.00	89.620	7217.00	1140.49N	1437.56E	==>	1568.75	1405590.76	3161556.24
9100.00	90.00	89.620	7217.00	1141.15N	1537.55E	==>	1668.05	1405591.41	3161656.24
9200.00	90.00	89.620	7217.00	1141.80N	1637.55E	==>	1767.35	1405592.07	3161756.23
9300.00	90.00	89.620	7217.00	1142.46N	1737.55E	==>	1866.64	1405592.72	3161856.22
9400.00	90.00	89.620	7217.00	1143.11N	1837.55E	==>	1965.94	1405593.38	3161956.22
9500.00	90.00	89.620	7217.00	1143.77N	1937.55E	==>	2065.24	1405594.03	3162056.21
9600.00	90.00	89.620	7217.00	1144.42N	2037.54E	==>	2164.53	1405594.69	3162156.21
9700.00	90.00	89.620	7217.00	1145.08N	2137.54E	==>	2263.83	1405595.34	3162256.20
9800.00	90.00	89.620	7217.00	1145.74N	2237.54E	==>	2363.13	1405596.00	3162356.19
9900.00	90.00	89.620	7217.00	1146.39N	2337.54E	==>	2462.42	1405596.66	3162456.19
10000.00	90.00	89.620	7217.00	1147.05N	2437.54E	==>	2561.72	1405597.31	3162556.18
10100.00	90.00	89.620	7217.00	1147.70N	2537.53E	==>	2661.02	1405597.97	3162656.18
10200.00	90.00	89.620	7217.00	1148.36N	2637.53E	==>	2760.31	1405598.62	3162756.17
10300.00	90.00	89.620	7217.00	1149.01N	2737.53E	==>	2859.61	1405599.28	3162856.16
10400.00	90.00	89.620	7217.00	1149.67N	2837.53E	==>	2958.91	1405599.93	3162956.16
10500.00	90.00	89.620	7217.00	1150.32N	2937.52E	==>	3058.20	1405600.59	3163056.15
10600.00	90.00	89.620	7217.00	1150.98N	3037.52E	==>	3157.50	1405601.24	3163156.14
10700.00	90.00	89.620	7217.00	1151.64N	3137.52E	==>	3256.80	1405601.90	3163256.14
10800.00	90.00	89.620	7217.00	1152.29N	3237.52E	==>	3356.09	1405602.56	3163356.13
10900.00	90.00	89.620	7217.00	1152.95N	3337.52E	==>	3455.39	1405603.21	3163456.13
11000.00	90.00	89.620	7217.00	1153.60N	3437.51E	==>	3554.69	1405603.87	3163556.12
11100.00	90.00	89.620	7217.00	1154.26N	3537.51E	==>	3653.98	1405604.52	3163656.11
11200.00	90.00	89.620	7217.00	1154.91N	3637.51E	==>	3753.28	1405605.18	3163756.11
11300.00	90.00	89.620	7217.00	1155.57N	3737.51E	==>	3852.58	1405605.83	3163856.10
11400.00	90.00	89.620	7217.00	1156.22N	3837.51E	==>	3951.87	1405606.49	3163956.10
11500.00	90.00	89.620	7217.00	1156.88N	3937.50E	==>	4051.17	1405607.14	3164056.09
11600.00	90.00	89.620	7217.00	1157.54N	4037.50E	==>	4150.46	1405607.80	3164156.08
11700.00	90.00	89.620	7217.00	1158.19N	4137.50E	==>	4249.76	1405608.46	3164256.08
11800.00	90.00	89.620	7217.00	1158.85N	4237.50E	==>	4349.06	1405609.11	3164356.07
11900.00	90.00	89.620	7217.00	1159.50N	4337.49E	==>	4448.35	1405609.77	3164456.07
12000.00	90.00	89.620	7217.00	1160.16N	4437.49E	==>	4547.65	1405610.42	3164556.06

All data is in Feet unless otherwise stated
Coordinates are from Slot MD's are from Rig (Planned Datum #1 4967.0ft above Mean Sea Level)
Vertical Section is from 0.00N 0.00E on azimuth 82.820 degrees
Bottom hole distance is 9498.51 Feet on azimuth 82.82 degrees from Wellhead
Calculation method uses Minimum Curvature method
Prepared by Peterson Energy
Date Printed: 28-Nov-2012



SYSDRILL
Well Design Combined Report
Wellbore: PAVISTMA 10 #1-3-32-090-8-CH (PWB)
Wellpath: PAVISTMA 10 #1-3-32-090-8-CH (PWP#1)

Interpolated Wellpath

MD[ft]	Inc[deg]	Azi[deg]	TVD[ft]	North[ft]	East[ft]	Dogleg [deg/100ft]	Vertical Section[ft]	Northing	Easting
12100.00	90.00	89.620	7217.00	1160.81N	4537.49E	==>	4646.95	1405611.08	3164656.05
12200.00	90.00	89.620	7217.00	1161.47N	4637.49E	==>	4746.24	1405611.73	3164756.05
12254.47	90.00	89.620	7217.00	1161.83N	4691.96E	==>	4800.33	1405612.09	3164810.51
12258.36	90.00	89.700	7217.00	1161.85N	4695.85E	2.00	4804.20	1405612.11	3164814.41
12300.00	90.00	89.700	7217.00	1162.07N	4737.49E	==>	4845.53	1405612.33	3164856.04
12400.00	90.00	89.700	7217.00	1162.59N	4837.49E	==>	4944.81	1405612.85	3164956.04
12500.00	90.00	89.700	7217.00	1163.11N	4937.48E	==>	5044.09	1405613.37	3165056.03
12600.00	90.00	89.700	7217.00	1163.62N	5037.48E	==>	5143.38	1405613.89	3165156.03
12700.00	90.00	89.700	7217.00	1164.14N	5137.48E	==>	5242.66	1405614.41	3165256.02
12800.00	90.00	89.700	7217.00	1164.66N	5237.48E	==>	5341.94	1405614.93	3165356.01
12900.00	90.00	89.700	7217.00	1165.18N	5337.48E	==>	5441.22	1405615.45	3165456.01
13000.00	90.00	89.700	7217.00	1165.70N	5437.48E	==>	5540.50	1405615.97	3165556.00
13100.00	90.00	89.700	7217.00	1166.22N	5537.48E	==>	5639.78	1405616.49	3165656.00
13200.00	90.00	89.700	7217.00	1166.74N	5637.47E	==>	5739.06	1405617.01	3165755.99
13300.00	90.00	89.700	7217.00	1167.26N	5737.47E	==>	5838.34	1405617.53	3165855.99
13400.00	90.00	89.700	7217.00	1167.78N	5837.47E	==>	5937.62	1405618.05	3165955.98
13500.00	90.00	89.700	7217.00	1168.30N	5937.47E	==>	6036.90	1405618.57	3166055.98
13600.00	90.00	89.700	7217.00	1168.82N	6037.47E	==>	6136.18	1405619.08	3166155.97
13700.00	90.00	89.700	7217.00	1169.34N	6137.47E	==>	6235.46	1405619.60	3166255.97
13800.00	90.00	89.700	7217.00	1169.86N	6237.47E	==>	6334.74	1405620.12	3166355.96
13900.00	90.00	89.700	7217.00	1170.38N	6337.46E	==>	6434.02	1405620.64	3166455.96
14000.00	90.00	89.700	7217.00	1170.90N	6437.46E	==>	6533.30	1405621.16	3166555.95
14100.00	90.00	89.700	7217.00	1171.42N	6537.46E	==>	6632.58	1405621.68	3166655.95
14200.00	90.00	89.700	7217.00	1171.94N	6637.46E	==>	6731.86	1405622.20	3166755.94
14300.00	90.00	89.700	7217.00	1172.46N	6737.46E	==>	6831.14	1405622.72	3166855.94
14400.00	90.00	89.700	7217.00	1172.98N	6837.46E	==>	6930.42	1405623.24	3166955.93
14500.00	90.00	89.700	7217.00	1173.50N	6937.46E	==>	7029.70	1405623.76	3167055.92
14600.00	90.00	89.700	7217.00	1174.02N	7037.46E	==>	7128.98	1405624.28	3167155.92
14700.00	90.00	89.700	7217.00	1174.54N	7137.45E	==>	7228.26	1405624.80	3167255.91
14800.00	90.00	89.700	7217.00	1175.06N	7237.45E	==>	7327.54	1405625.32	3167355.91
14900.00	90.00	89.700	7217.00	1175.58N	7337.45E	==>	7426.83	1405625.84	3167455.90
15000.00	90.00	89.700	7217.00	1176.10N	7437.45E	==>	7526.11	1405626.36	3167555.90
15100.00	90.00	89.700	7217.00	1176.62N	7537.45E	==>	7625.39	1405626.88	3167655.89
15200.00	90.00	89.700	7217.00	1177.14N	7637.45E	==>	7724.67	1405627.40	3167755.89
15300.00	90.00	89.700	7217.00	1177.66N	7737.45E	==>	7823.95	1405627.92	3167855.88
15400.00	90.00	89.700	7217.00	1178.17N	7837.44E	==>	7923.23	1405628.44	3167955.88
15500.00	90.00	89.700	7217.00	1178.69N	7937.44E	==>	8022.51	1405628.96	3168055.87
15600.00	90.00	89.700	7217.00	1179.21N	8037.44E	==>	8121.79	1405629.48	3168155.87
15700.00	90.00	89.700	7217.00	1179.73N	8137.44E	==>	8221.07	1405630.00	3168255.86
15800.00	90.00	89.700	7217.00	1180.25N	8237.44E	==>	8320.35	1405630.52	3168355.86
15900.00	90.00	89.700	7217.00	1180.77N	8337.44E	==>	8419.63	1405631.04	3168455.85
16000.00	90.00	89.700	7217.00	1181.29N	8437.44E	==>	8518.91	1405631.56	3168555.85
16100.00	90.00	89.700	7217.00	1181.81N	8537.44E	==>	8618.19	1405632.08	3168655.84
16200.00	90.00	89.700	7217.00	1182.33N	8637.43E	==>	8717.47	1405632.60	3168755.83
16300.00	90.00	89.700	7217.00	1182.85N	8737.43E	==>	8816.75	1405633.11	3168855.83
16400.00	90.00	89.700	7217.00	1183.37N	8837.43E	==>	8916.03	1405633.63	3168955.82
16500.00	90.00	89.700	7217.00	1183.89N	8937.43E	==>	9015.31	1405634.15	3169055.82
16600.00	90.00	89.700	7217.00	1184.41N	9037.43E	==>	9114.59	1405634.67	3169155.81
16700.00	90.00	89.700	7217.00	1184.93N	9137.43E	==>	9213.87	1405635.19	3169255.81
16800.00	90.00	89.700	7217.00	1185.45N	9237.43E	==>	9313.15	1405635.71	3169355.80
16900.00	90.00	89.700	7217.00	1185.97N	9337.42E	==>	9412.43	1405636.23	3169455.80
16986.70	90.00	89.700	7217.00	1186.42N	9424.12E	==>	9498.51	1405636.68	3169542.49

All data is in Feet unless otherwise stated
Coordinates are from Slot MD's are from Rig and TVD's are from Rig (Planned Datum #1 4967.0ft above Mean Sea Level)
Vertical Section is from 0.00N 0.00E on azimuth 82.820 degrees
Bottom hole distance is 9498.51 Feet on azimuth 82.82 degrees from Wellhead
Calculation method uses Minimum Curvature method
Prepared by Peterson Energy
Date Printed: 28-Nov-2012



SYSDRILL
Well Design Combined Report
Wellbore: PAVISTMA 10 #1-3-32-090-8-CH (PWB)
Wellpath: PAVISTMA 10 #1-3-32-090-8-CH (PWP#1)

Targets

Name	North[ft]	East[ft]	TVD[ft]	Latitude	Longitude	Northing	Easting	Last Revised
P 10 - T1	1131.76N	106.23E	7217.00	N40 26 43.0682	W104 55 27.5471	1405582.03	3160224.97	19-Oct-2012
P 10 - T2	1161.83N	4691.96E	7217.00	N40 26 43.0669	W104 54 28.2338	1405612.09	3164810.51	19-Oct-2012
P 10 - T3	1186.42N	9424.12E	7217.00	N40 26 42.9932	W104 53 27.0270	1405636.68	3169542.49	19-Oct-2012

Survey Tool Program

Reference	Survey Name	MD[ft]	TVD[ft]	Survey Tool	Error Model
9395	Planned	16986.70	7217.00	WdW Rate Gyro	Standard

Notes

All data is in Feet unless otherwise stated
Coordinates are from Slot MD's are from Rig and TVD's are from Rig (Planned Datum #1 4967.0ft above Mean Sea Level)
Vertical Section is from 0.00N 0.00E on azimuth 82.820 degrees
Bottom hole distance is 9498.51 Feet on azimuth 82.82 degrees from Wellhead
Calculation method uses Minimum Curvature method
Prepared by Peterson Energy
Date Printed: 28-Nov-2012



SYSDRILL
Closest Approach + Clearance Factor Summary Report
Wellbore: PAVISTMA 10 #1-3-32-090-8-CH (PWB)
Wellpath: PAVISTMA 10 #1-3-32-090-8-CH (PWP#1)

Ellipse separations are reported ONLY if BOTH wells have uncertainty data
Only Depth and Magnetic Reference Field error terms are correlated across tie points
Cutoff is calculated on CENTRE to CENTRE distance

Summary data uses Closest Approach clearance calculation for all minima
Hole size/Casings ARE included
Hole size/Casings are NOT subtracted from Centre-Centre distance
Confidence limit of 95.00% / 2.80 SD.

Wellbore

Name	Created	Last Revised
PAVISTMA 10 #1-3-32-090-8-CH (PWB)	13-Nov-2012	13-Nov-2012

Well

Name	Government ID	Last Revised
PAVISTMA 10 #1-3-32-090-8-CH		13-Nov-2012

Slot

Name	Grid Northing	Grid Easting	Latitude	Longitude	North	East
Slot #10	1404450.3098	3160118.7426	N40 26 31.8917	W104 55 29.0160	128.26N	5.47W

Installation

Name	Easting	Northing	Coord System Name	North Alignment
Pavistma	3160124.2135	1404322.0586	CO83-NF on NORTH AMERICAN DATUM 1983 datum	Grid

Field

Name	Easting	Northing	Coord System Name	North Alignment
Windsor Project	3162710.0707	1407271.6545	CO83-NF on NORTH AMERICAN DATUM 1983 datum	Grid

Clearance Summary

Offset WellName	Offset Wellbore	Offset Slot	Offset Structure	Separation [ft]	MD[ft]	Diverging From[ft]	Ellipse Separation [ft]	Ellipse MD[ft]	Clearance Factor	Clearance MD[ft]
PAVISTMA 9 #1-3-32-09 0-4-NH	PAVISTMA 9 #1-3-32-090-4 -NH (PWB)	Slot #9	Pavistma	15.96	1030.06	11838.75	14.29	1062.87	3.85	11824.02
PAVISTMA 11 #1-3-32-09 0-4-NH	PAVISTMA 11 #1-3-32-090-4 -NH (PWB)	Slot #11	Pavistma	16.00	1080.05	11824.02	13.94	1549.08	3.40	11873.24
PAVISTMA 8 #1-3-32-09 0-4-NH	PAVISTMA 8 #1-3-32-090-4 -NH (PWB)	Slot #8	Pavistma	31.91	1358.14	7713.00	29.73	1358.14	7.08	11840.43
PAVISTMA 12 #1-2-32-09 0-4-NH	PAVISTMA 12 #1-2-32-090-4 -NH (PWB)	Slot #12	Pavistma	32.00	1046.77	11824.02	30.20	1248.80	6.54	11913.00
PAVISTMA 5-1-32	PAVISTMA 5-1-32 (AWB)	PAVISTMA 5-1-32	Pavistma	43.82	2276.78	2276.78	33.63	2293.18	4.25	2375.20
PAVISTMA 7 #1-4-32-09 0-8-CH	PAVISTMA 7 #1-4-32-090-8 -CH (PWB)	Slot #7	Pavistma	47.96	1030.06	12254.56	46.31	1062.87	3.93	16986.70
PAVISTMA 6 #1-4-32-09 0-4-NH	PAVISTMA 6 #1-4-32-090-4 -NH (PWB)	Slot #6	Pavistma	63.98	1030.06	11889.64	62.34	1030.06	12.03	11889.64
PAVISTMA 5 #1-5-32-09 0-4-NH	PAVISTMA 5 #1-5-32-090-4 -NH (PWB)	Slot #5	Pavistma	79.98	1013.66	12086.49	78.37	1013.66	21.28	12184.92
PAVISTMA 4 #1-6-32-09 0-4-NH	PAVISTMA 4 #1-6-32-090-4 -NH (PWB)	Slot #4	Pavistma	95.98	1013.66	12208.52	94.37	1013.66	26.38	12463.79
PAVISTMA 4-2-32	PAVISTMA 4-2-32 (AWB)	PAVISTMA 4-2-32	Pavistma	97.79	1128.49	8008.14	94.54	1144.89	5.33	7919.82
PAVISTMA 5-3-32	PAVISTMA 5-3-32 (AWB)	PAVISTMA 5-3-32	Pavistma	141.86	1046.46	8592.40	139.68	1046.46	20.01	8444.76
CENTER POINT 5	CENTER POINT 5	Slot #5	Center Point	150.22	12140.27	12140.27	125.39	12152.11	5.55	12213.00

All data is in Feet unless otherwise stated
Coordinates are from Slot MD's are from Rig and TVD's are from Rig (Planned Datum #1 4967.0ft above Mean Sea Level)
Vertical Section is from 0.00N 0.00E on azimuth 82.820 degrees
Prepared by Peterson Energy
Date Printed: 28-Nov-2012

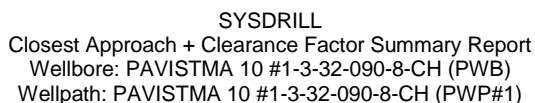


SYSDRILL
Closest Approach + Clearance Factor Summary Report
Wellbore: PAVISTMA 10 #1-3-32-090-8-CH (PWB)
Wellpath: PAVISTMA 10 #1-3-32-090-8-CH (PWP#1)

Clearance Summary

Offset WellName	Offset Wellbore	Offset Slot	Offset Structure	Separation [ft]	MD[ft]	Diverging From[ft]	Ellipse Separation [ft]	Ellipse MD[ft]	Clearance Factor	Clearance MD[ft]
#8-1-32-18 0-4-NH CENTER POINT 7	#8-1-32-180-4 -NH (PWB) CENTER POINT 7	Slot #7	Center Point	150.93	12409.31	12409.31	125.85	12414.57	5.59	12480.19
#0-1-33-18 0-4-NH HILLSIDE 17	#0-1-33-180-4 -NH (PWB) HILLSIDE 17 #3-1-33-090-4 -NH (PWB)	Slot #17	Hillside	193.32	16986.70	16986.70	67.52	16986.70	1.54	16986.70
#3-1-33-09 0-4-NH FRYE FARMS 12	FRYE FARMS 12 #1-3-33-090-4 -NH (PWB)	Slot #12	Frye Farms	227.04	16986.70	16986.70	126.41	16986.70	2.26	16986.70
#1-3-33-09 0-4-NH RANCHO WATER VALLEY 9	RANCHO WATER VALLEY 9 #8-7-33-000-4 -CH (PWB)	Slot #9	Rancho Water Valley	254.10	16986.70	16986.70	149.72	16986.70	2.43	16986.70
#8-7-33-00 0-4-CH PAVISTMA 12-32	PAVISTMA 12-32 (AWB)	PAVISTMA 12-32	Pavistma (Anadarko)	317.37	13.00	7949.41	316.00	341.08	80.23	8051.06
PAVISTMA 11-32	PAVISTMA 11-32 (AWB)	PAVISTMA 11-32	Pavistma (Anadarko)	348.47	13.00	9277.10	346.99	423.10	22.29	9297.78
PAVISTMA 19-32	PAVISTMA 19-32 (AWB)	PAVISTMA 19-32	Pavistma (Anadarko)	377.03	13.00	8622.61	375.98	259.06	48.99	9182.95
RANCHO WATER VALLEY 8	RANCHO WATER VALLEY 8 #8-7-33-000-4 -NH (PWB)	Slot #8	Rancho Water Valley	435.88	16986.70	16986.70	387.94	16986.70	9.09	16986.70
#8-7-33-00 0-4-NH HILLSIDE 18	HILLSIDE 18 #2-1-33-090-4 -NH (PWB)	Slot #18	Hillside	503.36	16986.70	16986.70	361.63	16986.70	3.55	16986.70
#2-1-33-09 0-4-NH FRYE FARMS 11	FRYE FARMS 11 #1-4-33-090-4 -NH (PWB)	Slot #11	Frye Farms	522.31	16986.70	16986.70	395.27	16986.70	4.11	16986.70
#1-4-33-09 0-4-NH RAINDAN CE 6	RAINDANCE 6 #1-2-32-090-4 -CH (PWB)	Slot #6	Raindance	633.22	11813.14	11813.14	405.59	11813.14	2.78	11807.62
#1-2-32-09 0-4-CH HILLSIDE 15	HILLSIDE 15 #2-1-33-090-4 -CH (PWB)	Slot #15	Hillside	664.61	16986.70	16986.70	521.00	16986.70	4.63	16986.70
#2-1-33-09 0-4-CH RAINDAN CE 5	RAINDANCE 5 #1-2-32-090-4 -NH (PWB)	Slot #5	Raindance	801.50	11813.00	11813.00	574.40	11807.62	3.53	11807.62
#1-2-32-09 0-4-NH HILLSIDE 14	HILLSIDE 14 #2-1-33-090-4 -NH (PWB)	Slot #14	Hillside	830.90	16986.70	16986.70	687.41	16986.70	5.79	16986.70
#2-1-33-09 0-4-NH FRYE FARMS 10	FRYE FARMS 10 #1-4-33-090-4 -NH (PWB)	Slot #10	Frye Farms	894.82	16986.70	16986.70	763.70	16986.70	6.82	16986.70
#1-4-33-09 0-4-NH RAINDAN CE 4	RAINDANCE 4 #1-1-32-090-4 -NH (PWB)	Slot #4	Raindance	1126.66	11807.62	11807.62	898.65	11807.62	4.94	11806.54
#1-1-32-09 0-4-NH CENTER POINT 2	CENTER POINT 2 #1-1-33-090-4 -NH (PWB)	Slot #2	Center Point	1155.58	16986.70	16986.70	1039.50	16986.70	9.96	16986.70
#1-1-33-09 0-4-NH FRYE FARMS 9	FRYE FARMS 9 #1-5-33-090-4 -NH (PWB)	Slot #9	Frye Farms	1221.59	16986.70	16986.70	1089.55	16986.70	9.25	16986.70
#1-5-33-09 0-4-NH RAINDAN CE 3	RAINDANCE 3 #1-1-32-090-4 -CH (PWB)	Slot #3	Raindance	1290.24	11807.62	11807.62	1061.98	11807.62	5.65	11813.00
#1-1-32-09 0-4-CH HILLSIDE 2-4-32	HILLSIDE 2-4-32 (PWB)	HILLSIDE 2-4-32	Hillside	1313.67	9096.73	9096.73	1270.57	9117.33	27.83	9527.44

All data is in Feet unless otherwise stated
Coordinates are from Slot MD's are from Rig and TVD's are from Rig (Planned Datum #1 4967.0ft above Mean Sea Level)
Vertical Section is from 0.00N 0.00E on azimuth 82.820 degrees
Prepared by Peterson Energy
Date Printed: 28-Nov-2012



Offset WellName	Offset Wellbore	Offset Slot	Offset Structure	Separation [ft]	MD[ft]	Diverging From[ft]	Ellipse Separation [ft]	Ellipse MD[ft]	Clearance Factor	Clearance MD[ft]
CENTER POINT 1 #1-1-33-09 0-4-CH FRYE	CENTER POINT 1 #1-1-33-090-4 -CH (PWB) FRYE	Slot #1	Center Point	1324.28	16986.70	16986.70	1208.20	16986.70	11.41	16986.70
FARMS 13 #1-5-5-32- 090-6-CH RAINDAN CE 2	FARMS 13 #1-5-5-32-090 -6-CH (PWB) RAINDANCE 2	Slot #13	Frye Farms	1372.08	16986.70	16986.70	1237.66	16986.70	10.21	16986.70
#1-1-32-09 0-4-NH CENTER POINT 3	#1-1-32-090-4 -NH CENTER POINT 3	Slot #2	Raindance	1453.28	11801.92	11801.92	1225.46	11807.62	6.38	11824.02
#1-1-33-09 0-4-NH FRYE	#1-1-33-090-4 -NH (PWB) FRYE	Slot #3	Center Point	1485.32	16986.70	16986.70	1369.27	16986.70	12.80	16986.70
FARMS 8 #1-5-33-09 0-4-NH CENTER POINT 4	FARMS 8 #1-5-33-090-4 -NH (PWB) CENTER POINT 4	Slot #8	Frye Farms	1549.66	16986.70	16986.70	1417.22	16986.70	11.70	16986.70
#1-0-33-09 0-4-NH RAINDAN CE 9	#1-0-33-090-4 -NH (PWB) RAINDANCE 9	Slot #4	Center Point	1725.17	16986.70	16986.70	1608.94	16986.70	14.84	16986.70
#1-0-32-09 0-4-NH HILLSIDE 11	#1-0-32-090-4 -NH (PWB) HILLSIDE 11	Slot #9	Raindance	1727.50	11791.22	11791.22	1642.22	11824.02	19.98	12013.00
#0-7-28-00 0-4-CH FRYE	#0-7-28-000-4 -CH (PWB) FRYE	Slot #11	Hillside	1832.56	12152.11	12152.11	1740.98	12184.92	19.41	12496.60
FARMS 7 #1-6-33-09 0-4-NH RAINDAN CE 8	FARMS 7 #1-6-33-090-4 -NH (PWB) RAINDANCE 8	Slot #7	Frye Farms	1878.67	16986.70	16986.70	1746.08	16986.70	14.17	16986.70
#1-0-32-09 09-4-CH CENTER POINT 6	#1-0-32-0909- 4-CH (PWB) CENTER POINT 6	Slot #8	Raindance	1890.86	11797.33	11797.33	1805.71	11824.02	21.81	12070.09
#1-0-33-09 0-4-CH HILLSIDE 9	#1-0-33-090-4 -CH (PWB) HILLSIDE 9 #7-7-29-000-4 -NH (PWB)	Slot #6	Center Point	1893.77	16986.70	16986.70	1777.93	16986.70	16.35	16986.70
#7-7-29-00 0-4-NH HILLSIDE 7	HILLSIDE 7 #7-7-29-000-4 -CH (PWB)	Slot #9	Hillside	1906.62	11709.19	11709.19	1831.37	11742.00	24.31	12102.90
#7-7-29-00 0-4-CH HILLSIDE 2	HILLSIDE 2 #5-7-29-000-4 -CH (PWB)	Slot #7	Hillside	1915.17	11561.56	11561.56	1865.95	11594.36	36.07	12086.49
#5-7-29-00 0-4-CH RAINDAN CE 7	HILLSIDE 10 #8-7-29-000-4 -NH (PWB)	Slot #2	Hillside	1916.84	10161.98	10161.98	1888.42	10183.60	56.83	10987.41
#1-0-32-09 0-4-NH HILLSIDE 6	RAINDANCE 7 #1-0-32-090-4 -NH (PWB) HILLSIDE 6 #6-7-29-000-4 -CH (PWB)	Slot #7	Raindance	1947.12	11795.29	11795.29	1862.15	11824.02	22.48	12070.09
#6-7-29-00 0-4-CH HILLSIDE 10	HILLSIDE 10 #8-7-29-000-4 -NH (PWB)	Slot #6	Hillside	1950.99	10786.69	10786.69	1906.19	10823.37	39.05	11446.73
#8-7-29-00 0-4-NH HILLSIDE 8	HILLSIDE 8 #7-7-29-000-4 -NH (PWB)	Slot #10	Hillside	1951.91	12023.30	12023.30	1865.12	12070.09	21.69	12398.17
#7-7-29-00 0-4-NH HILLSIDE 4	HILLSIDE 4 #5-7-29-000-4 -NH (PWB)	Slot #8	Hillside	1954.67	11408.62	11408.62	1889.51	11446.73	28.32	11889.64
#5-7-29-00 0-4-NH		Slot #4	Hillside	1956.58	10081.17	10081.17	1928.06	10101.58	58.78	10905.39

All data is in Feet unless otherwise stated
 Coordinates are from Slot MD's are from Rig and TVD's are from Rig (Planned Datum #1 4967.0ft above Mean Sea Level)
 Vertical Section is from 0.00N 0.00E on azimuth 82.820 degrees
 Prepared by Peterson Energy
 Date Printed: 28-Nov-2012



SYSDRILL
Closest Approach + Clearance Factor Summary Report
Wellbore: PAVISTMA 10 #1-3-32-090-8-CH (PWB)
Wellpath: PAVISTMA 10 #1-3-32-090-8-CH (PWP#1)

Clearance Summary

Offset WellName	Offset Wellbore	Offset Slot	Offset Structure	Separation [ft]	MD[ft]	Diverging From[ft]	Ellipse Separation [ft]	Ellipse MD[ft]	Clearance Factor	Clearance MD[ft]
HILLSIDE 3 #5-7-29-00 0-4-NH	HILLSIDE 3 #5-7-29-000-4 -NH (PWB)	Slot #3	Hillside	1956.58	10642.92	10642.92	1916.62	10675.73	43.28	11348.30
RAINDANCE CE 1 #1-1-32	RAINDANCE 1 #1-1-32 (PWB)	Slot #1	Raindance	1965.80	7335.73	7335.73	1952.47	7335.73	113.04	8838.46
HILLSIDE 5 #6-7-29-00 0-4-NH	HILLSIDE 5 #6-7-29-000-4 -NH (PWB)	Slot #5	Hillside	1979.73	11108.76	11108.76	1924.49	11135.05	33.16	11676.39
CENTER POINT 8 #1-0-33-09 0-4-NH	CENTER POINT 8 #1-0-33-090-4 -NH (PWB)	Slot #8	Center Point	1980.04	16986.70	16986.70	1863.80	16986.70	17.03	16986.70
FRYE FARM 7-5-32	FRYE FARM 7-5-32 (AWB)	FRYE FARMS #7-5-32 Slot #13	Frye Farms	2002.83	10087.62	10087.62	1941.43	10101.58	32.31	10298.43
RANCHO WATER VALLEY 13 #7-6-33-27 0-6-CH	RANCHO WATER VALLEY 13 #7-6-33-270-6 -CH (PWB)	Slot #6	Rancho Water Valley	2023.67	16986.70	16986.70	1930.90	16986.70	21.82	16986.70
FRYE FARMS 6 #1-6-33-09 0-4-NH	FRYE FARMS 6 #1-6-33-090-4 -NH (PWB)	Slot #12	Rancho Water Valley	2207.83	16986.70	16986.70	2075.15	16986.70	16.64	16986.70
RANCHO WATER VALLEY 12 #7-7-33-27 0-4-NH	RANCHO WATER VALLEY 12 #7-7-33-270-4 -NH (PWB)	Slot #5	Rancho Water Valley	2534.37	16986.70	16986.70	2308.67	13245.97	11.23	13245.97
FRYE FARMS 5 #7-9-32-27 0-3-NH	FRYE FARMS 5 #7-9-32-270-3 -NH (PWB)	Slot #11	Rancho Water Valley	2566.14	12401.61	12401.61	2511.73	12545.81	43.59	13152.76
RANCHO WATER VALLEY 11 #7-7-33-27 0-6-CH	RANCHO WATER VALLEY 11 #7-7-33-270-6 -CH (PWB)	Slot #10	Rancho Water Valley	2677.33	16986.70	16986.70	2584.68	16986.70	28.90	16986.70
RANCHO WATER VALLEY 10 #7-8-33-27 0-4-NH	RANCHO WATER VALLEY 10 #7-8-33-270-4 -NH (PWB)	Slot #1	Rancho Water Valley	2860.99	16986.70	16986.70	2768.63	16986.70	30.98	16986.70
FRYE FARMS 1 #7-8-32-27 0-4-NH	FRYE FARMS 1 #7-8-32-270-4 -NH (PWB)	Slot #7	Rancho Water Valley	2892.26	12717.42	12717.42	2833.92	12775.47	47.05	13382.42
RANCHO WATER VALLEY 7 #7-8-33-27 0-5-CH	RANCHO WATER VALLEY 7 #7-8-33-270-5 -CH (PWB)	FRYE FARMS #9-7-32 (AWB)	Frye Farms	3264.48	16986.70	16986.70	3023.93	12032.93	12.16	12032.93
FRYE FARMS #9-7-32	FRYE FARMS #9-7-32 (AWB)	FRYE FARMS #9-5-32 (AWB)	Frye Farms	3330.98	11569.19	11569.19	3282.94	11594.36	63.52	12824.68
FRYE FARMS #9-5-32	FRYE FARMS #9-5-32 (AWB)	Slot #6	Rancho Water Valley	3346.18	10258.60	10258.60	3287.00	10258.60	56.46	10134.39
RANCHO WATER VALLEY 6 #0-7-4-270 -5-NH	RANCHO WATER VALLEY 6 #0-7-4-270-5- NH (PWB)	Slot #4	Rancho Water Valley	3436.29	16986.70	16986.70	3343.54	16986.70	37.05	16986.70
RANCHO WATER VALLEY 4 #7-1-4-270 -4-NH	RANCHO WATER VALLEY 4 #7-1-4-270-4- NH (PWB)	Slot #3	Rancho Water Valley	3766.62	16986.70	16986.70	3559.24	13393.83	16.55	13393.83
RANCHO WATER VALLEY	RANCHO WATER VALLEY			4023.12	16106.24	16106.24	3901.69	16121.92	33.01	16367.99

All data is in Feet unless otherwise stated
Coordinates are from Slot MD's are from Rig and TVD's are from Rig (Planned Datum #1 4967.0ft above Mean Sea Level)
Vertical Section is from 0.00N 0.00E on azimuth 82.820 degrees
Prepared by Peterson Energy
Date Printed: 28-Nov-2012



SYSDRILL
Closest Approach + Clearance Factor Summary Report
Wellbore: PAVISTMA 10 #1-3-32-090-8-CH (PWB)
Wellpath: PAVISTMA 10 #1-3-32-090-8-CH (PWP#1)

Clearance Summary

Offset WellName	Offset Wellbore	Offset Slot	Offset Structure	Separation [ft]	MD[ft]	Diverging From[ft]	Ellipse Separation [ft]	Ellipse MD[ft]	Clearance Factor	Clearance MD[ft]
#2-6-4 RANCHO WATER VALLEY	#2-6-4 (AWB) RANCHO WATER VALLEY	Slot #2	Rancho Water Valley	4058.87	16986.70	16986.70	3960.91	16986.70	41.43	16986.70
2-8-4 RANCHO WATER VALLEY 5	2-8-4 (AWB) RANCHO WATER VALLEY 5	Slot #5	Rancho Water Valley	4424.26	16986.70	16986.70	4217.27	13330.80	19.42	13330.80
#7-2-4-270 -4-NH RANCHO WATER VALLEY	#7-2-4-270-4- NH (PWB) RANCHO WATER VALLEY	Slot #1	Rancho Water Valley	4759.40	16986.70	16986.70	4662.61	16986.70	49.17	16986.70
#3-9-4 DIAMOND VALLEY SW 9-5-22	#3-9-4 (AWB) DIAMOND VALLEY SW 1	Slot #1	Diamond Valley SW	7949.26	16986.70	16986.70	7841.74	16986.70	73.93	16986.70
DIAMOND VALLEY SW 8-2-22	#3-7-22-270-6 -NH (PWB) DIAMOND VALLEY SW 8-2-22 (PWB)	Slot #5	Diamond Valley SW	7974.69	16986.70	16986.70	7855.36	16986.70	66.83	16986.70
DIAMOND VALLEY SW 2	DIAMOND VALLEY SW 2	Slot #2	Diamond Valley SW	8113.85	16986.70	16986.70	8006.57	16986.70	75.63	16986.70
DIAMOND VALLEY SW 2	#3-7-22-270-6 -CH (PWB) DIAMOND VALLEY SW 8-4-22 (PWB)	Slot #2	Diamond Valley SW	8276.31	16986.70	16986.70	8194.04	16986.70	100.59	16986.70
DIAMOND VALLEY SW 3	DIAMOND VALLEY SW 3	Slot #3	Diamond Valley SW	8277.37	16986.70	16986.70	8169.91	16986.70	77.03	16986.70
DIAMOND VALLEY SW 4	#3-6-22-270-6 -NH (PWB) DIAMOND VALLEY SW 4	Slot #4	Diamond Valley SW	8608.64	16986.70	16986.70	8501.09	16986.70	80.04	16986.70
DIAMOND VALLEY SW 7	#3-6-22-270-6 -NH (PWB) DIAMOND VALLEY SW 7-3-22 (PWB)	Slot #7	Diamond Valley SW	8744.08	16986.70	16986.70	8640.89	16986.70	84.74	16986.70
DIAMOND VALLEY SW 8-2-22	DIAMOND VALLEY SW 5	Slot #5	Diamond Valley SW	8773.39	16986.70	16986.70	8666.01	16986.70	81.70	16986.70
DIAMOND VALLEY SW 6	#3-6-22-270-6 -CH (PWB) DIAMOND VALLEY SW 6 (PWB)	Slot #6	Diamond Valley SW	8940.17	16986.70	16986.70	8832.59	16986.70	83.10	16986.70
DIAMOND VALLEY SW 8	DIAMOND VALLEY SW 6-2-22 (PWB)	Slot #8	Diamond Valley SW	9149.72	16986.70	16986.70	9029.48	16986.70	76.10	16986.70
DIAMOND VALLEY SW 7	DIAMOND VALLEY SW 7	Slot #7	Diamond Valley SW	9268.27	16986.70	16986.70	9160.82	16986.70	86.26	16986.70
DIAMOND VALLEY SW 8	#3-5-22-270-6 -NH (PWB) DIAMOND VALLEY SW 8	Slot #8	Diamond Valley SW	9346.69	16986.70	16986.70	9239.80	16986.70	87.44	16986.70
DIAMOND VALLEY SW 10	#3-5-22-270-6 -CH (PWB) DIAMOND VALLEY SW 6-4-22 (PWB)	Slot #10	Diamond Valley SW	9492.29	16986.70	16986.70	9402.84	16986.70	106.12	16986.70
DIAMOND VALLEY SW 9	DIAMOND VALLEY SW 9	Slot #9	Diamond Valley SW	9599.55	16986.70	16986.70	9491.80	16986.70	89.09	16986.70
DIAMOND VALLEY SW 10	#3-4-22-270-6 -NH (PWB) DIAMOND VALLEY SW 10	Slot #10	Diamond Valley SW	9927.56	16986.70	16986.70	9819.94	16986.70	92.25	16986.70
	#3-4-22-270-6									

All data is in Feet unless otherwise stated
Coordinates are from Slot MD's are from Rig and TVD's are from Rig (Planned Datum #1 4967.0ft above Mean Sea Level)
Vertical Section is from 0.00N 0.00E on azimuth 82.820 degrees
Prepared by Peterson Energy
Date Printed: 28-Nov-2012



SYSDRILL
Closest Approach + Clearance Factor Summary Report
Wellbore: PAVISTMA 10 #1-3-32-090-8-CH (PWB)
Wellpath: PAVISTMA 10 #1-3-32-090-8-CH (PWP#1)

Clearance Summary

Offset WellName	Offset Wellbore	Offset Slot	Offset Structure	Separation [ft]	MD[ft]	Diverging From[ft]	Ellipse Separation [ft]	Ellipse MD[ft]	Clearance Factor	Clearance MD[ft]
-NH (PWB)										