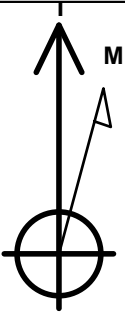


Whiting Oil & Gas

Well Name: **Razor #25-2514H**  
Surface Location: Razor #25-2514H Pad Sec.25-T10N-R58W  
North American Datum 1983 , US State Plane 1983 , Colorado Northern Zone  
Ground Elevation: 4761.2  
+N/-S +E/-W Northing Easting Latitude Longitude Slot  
0.0 0.0 1544564.48 3464883.65 40.816125 -103.820411  
Original Well Elev WELL @ 4777.7ft (Original Well Elev)

WELLBORE TARGET DETAILS

Name	TVD	+N/-S	+E/-W	Shape
HARDLINE SHL 660'FNL	1.0	-346.0	400.0	Polygon
BHL 660'FSL, 660'FWL	5699.0	-4343.6	92.2	Point



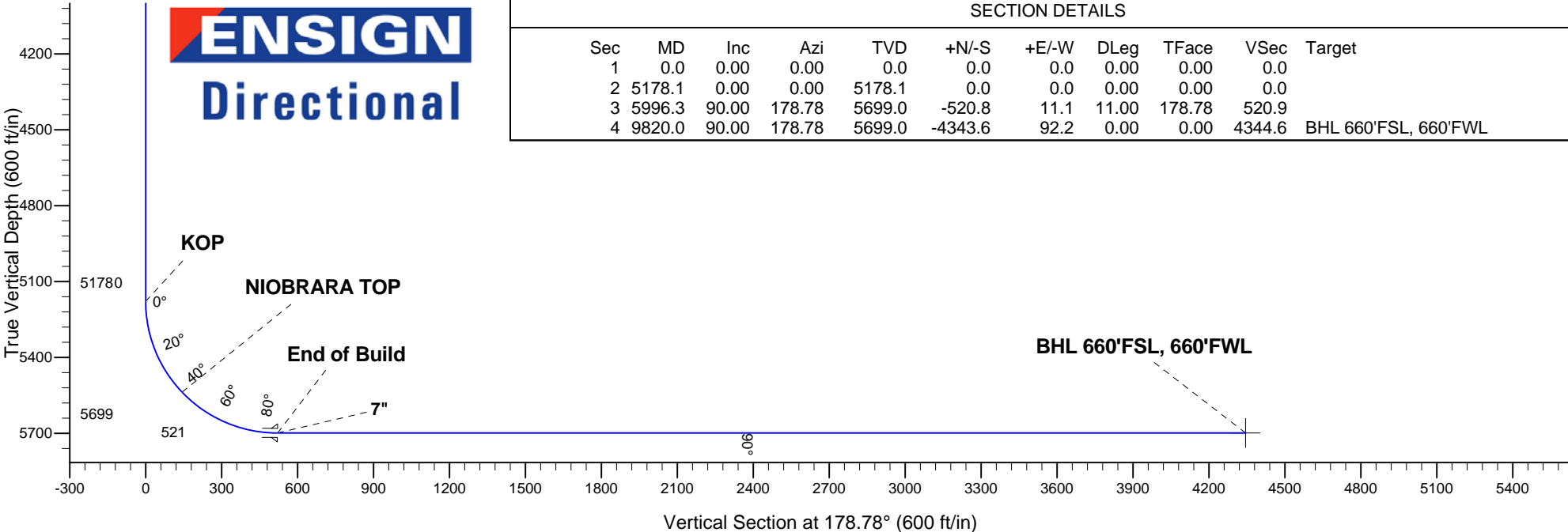
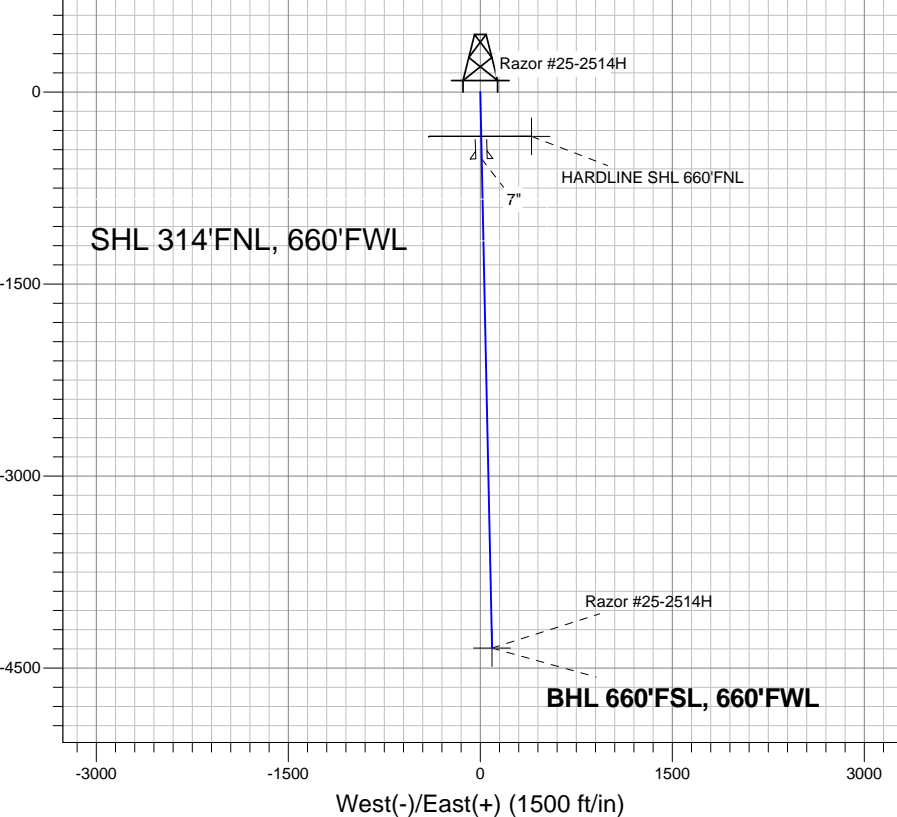
Azimuths to True North  
Magnetic North: 8.21°  
  
Magnetic Field  
Strength: 53314.6nT  
Dip Angle: 67.49°  
Date: 9/10/2012  
Model: IGRF2010

ANNOTATIONS

TVD	MD	Annotation
5178.1	5178.1	KOP
5699.0	5996.3	End of Build

Razor #25-2514H Pad Sec.25-T10N-R58W  
Razor #25-2514H  
Plan #1 (9-10-12)

South(-)/North(+) (1500 ft/in)



SECTION DETAILS

Sec	MD	Inc	Azi	TVD	+N/-S	+E/-W	DLeg	TFace	VSec	Target
1	0.0	0.00	0.00	0.0	0.0	0.0	0.00	0.00	0.0	
2	5178.1	0.00	0.00	5178.1	0.0	0.0	0.00	0.00	0.0	
3	5996.3	90.00	178.78	5699.0	-520.8	11.1	11.00	178.78	520.9	
4	9820.0	90.00	178.78	5699.0	-4343.6	92.2	0.00	0.00	4344.6	BHL 660'FSL, 660'FWL



## **Directional**

### **Whiting Oil & Gas**

**SEC.25-T10N-R58W**

**Razor #25-2514H Pad Sec.25-T10N-R58W**

**Razor #25-2514H**

**Wellbore #1**

**Plan: Plan #1 (9-10-12)**

### **Standard Planning Report**

**10 September, 2012**

Plan Sections										
Measured Depth (ft)	Inclination (°)	Azimuth (°)	Vertical Depth (ft)	+N/-S (ft)	+E/-W (ft)	Dogleg Rate (°/100ft)	Build Rate (°/100ft)	Turn Rate (°/100ft)	TFO (°)	Target
0.0	0.00	0.00	0.0	0.0	0.0	0.00	0.00	0.00	0.00	
5,178.1	0.00	0.00	5,178.1	0.0	0.0	0.00	0.00	0.00	0.00	
5,996.3	90.00	178.78	5,699.0	-520.8	11.1	11.00	11.00	0.00	178.78	
9,820.0	90.00	178.78	5,699.0	-4,343.6	92.2	0.00	0.00	0.00	0.00	BHL 660'FSL, 660'F

<b>Database:</b>	Landmark	<b>Local Co-ordinate Reference:</b>	Well Razor #25-2514H
<b>Company:</b>	Whiting Oil & Gas	<b>TVD Reference:</b>	WELL @ 4777.7ft (Original Well Elev)
<b>Project:</b>	SEC.25-T10N-R58W	<b>MD Reference:</b>	WELL @ 4777.7ft (Original Well Elev)
<b>Site:</b>	Razor #25-2514H Pad Sec.25-T10N-R58W	<b>North Reference:</b>	True
<b>Well:</b>	Razor #25-2514H	<b>Survey Calculation Method:</b>	Minimum Curvature
<b>Wellbore:</b>	Wellbore #1		
<b>Design:</b>	Plan #1 (9-10-12)		

Planned Survey									
Measured Depth (ft)	Inclination (°)	Azimuth (°)	Vertical Depth (ft)	+N/-S (ft)	+E/-W (ft)	Vertical Section (ft)	Dogleg Rate (°/100ft)	Build Rate (°/100ft)	Turn Rate (°/100ft)
0.0	0.00	0.00	0.0	0.0	0.0	0.0	0.00	0.00	0.00
40.0	0.00	0.00	40.0	0.0	0.0	0.0	0.00	0.00	0.00
80.0	0.00	0.00	80.0	0.0	0.0	0.0	0.00	0.00	0.00
120.0	0.00	0.00	120.0	0.0	0.0	0.0	0.00	0.00	0.00
160.0	0.00	0.00	160.0	0.0	0.0	0.0	0.00	0.00	0.00
200.0	0.00	0.00	200.0	0.0	0.0	0.0	0.00	0.00	0.00
240.0	0.00	0.00	240.0	0.0	0.0	0.0	0.00	0.00	0.00
280.0	0.00	0.00	280.0	0.0	0.0	0.0	0.00	0.00	0.00
320.0	0.00	0.00	320.0	0.0	0.0	0.0	0.00	0.00	0.00
360.0	0.00	0.00	360.0	0.0	0.0	0.0	0.00	0.00	0.00
400.0	0.00	0.00	400.0	0.0	0.0	0.0	0.00	0.00	0.00
440.0	0.00	0.00	440.0	0.0	0.0	0.0	0.00	0.00	0.00
480.0	0.00	0.00	480.0	0.0	0.0	0.0	0.00	0.00	0.00
520.0	0.00	0.00	520.0	0.0	0.0	0.0	0.00	0.00	0.00
560.0	0.00	0.00	560.0	0.0	0.0	0.0	0.00	0.00	0.00
600.0	0.00	0.00	600.0	0.0	0.0	0.0	0.00	0.00	0.00
640.0	0.00	0.00	640.0	0.0	0.0	0.0	0.00	0.00	0.00
680.0	0.00	0.00	680.0	0.0	0.0	0.0	0.00	0.00	0.00
720.0	0.00	0.00	720.0	0.0	0.0	0.0	0.00	0.00	0.00
760.0	0.00	0.00	760.0	0.0	0.0	0.0	0.00	0.00	0.00
800.0	0.00	0.00	800.0	0.0	0.0	0.0	0.00	0.00	0.00
840.0	0.00	0.00	840.0	0.0	0.0	0.0	0.00	0.00	0.00
880.0	0.00	0.00	880.0	0.0	0.0	0.0	0.00	0.00	0.00
920.0	0.00	0.00	920.0	0.0	0.0	0.0	0.00	0.00	0.00
960.0	0.00	0.00	960.0	0.0	0.0	0.0	0.00	0.00	0.00
1,000.0	0.00	0.00	1,000.0	0.0	0.0	0.0	0.00	0.00	0.00
1,040.0	0.00	0.00	1,040.0	0.0	0.0	0.0	0.00	0.00	0.00
1,080.0	0.00	0.00	1,080.0	0.0	0.0	0.0	0.00	0.00	0.00
1,120.0	0.00	0.00	1,120.0	0.0	0.0	0.0	0.00	0.00	0.00
1,160.0	0.00	0.00	1,160.0	0.0	0.0	0.0	0.00	0.00	0.00
1,200.0	0.00	0.00	1,200.0	0.0	0.0	0.0	0.00	0.00	0.00
1,240.0	0.00	0.00	1,240.0	0.0	0.0	0.0	0.00	0.00	0.00
1,280.0	0.00	0.00	1,280.0	0.0	0.0	0.0	0.00	0.00	0.00
1,320.0	0.00	0.00	1,320.0	0.0	0.0	0.0	0.00	0.00	0.00
1,360.0	0.00	0.00	1,360.0	0.0	0.0	0.0	0.00	0.00	0.00
1,400.0	0.00	0.00	1,400.0	0.0	0.0	0.0	0.00	0.00	0.00
1,440.0	0.00	0.00	1,440.0	0.0	0.0	0.0	0.00	0.00	0.00
1,480.0	0.00	0.00	1,480.0	0.0	0.0	0.0	0.00	0.00	0.00
1,520.0	0.00	0.00	1,520.0	0.0	0.0	0.0	0.00	0.00	0.00
1,560.0	0.00	0.00	1,560.0	0.0	0.0	0.0	0.00	0.00	0.00
1,600.0	0.00	0.00	1,600.0	0.0	0.0	0.0	0.00	0.00	0.00
1,640.0	0.00	0.00	1,640.0	0.0	0.0	0.0	0.00	0.00	0.00
1,680.0	0.00	0.00	1,680.0	0.0	0.0	0.0	0.00	0.00	0.00
1,720.0	0.00	0.00	1,720.0	0.0	0.0	0.0	0.00	0.00	0.00
1,760.0	0.00	0.00	1,760.0	0.0	0.0	0.0	0.00	0.00	0.00
1,800.0	0.00	0.00	1,800.0	0.0	0.0	0.0	0.00	0.00	0.00
1,840.0	0.00	0.00	1,840.0	0.0	0.0	0.0	0.00	0.00	0.00
1,880.0	0.00	0.00	1,880.0	0.0	0.0	0.0	0.00	0.00	0.00
1,920.0	0.00	0.00	1,920.0	0.0	0.0	0.0	0.00	0.00	0.00
1,960.0	0.00	0.00	1,960.0	0.0	0.0	0.0	0.00	0.00	0.00
2,000.0	0.00	0.00	2,000.0	0.0	0.0	0.0	0.00	0.00	0.00
2,040.0	0.00	0.00	2,040.0	0.0	0.0	0.0	0.00	0.00	0.00
2,080.0	0.00	0.00	2,080.0	0.0	0.0	0.0	0.00	0.00	0.00
2,120.0	0.00	0.00	2,120.0	0.0	0.0	0.0	0.00	0.00	0.00

<b>Database:</b>	Landmark	<b>Local Co-ordinate Reference:</b>	Well Razor #25-2514H
<b>Company:</b>	Whiting Oil & Gas	<b>TVD Reference:</b>	WELL @ 4777.7ft (Original Well Elev)
<b>Project:</b>	SEC.25-T10N-R58W	<b>MD Reference:</b>	WELL @ 4777.7ft (Original Well Elev)
<b>Site:</b>	Razor #25-2514H Pad Sec.25-T10N-R58W	<b>North Reference:</b>	True
<b>Well:</b>	Razor #25-2514H	<b>Survey Calculation Method:</b>	Minimum Curvature
<b>Wellbore:</b>	Wellbore #1		
<b>Design:</b>	Plan #1 (9-10-12)		

Planned Survey									
Measured Depth (ft)	Inclination (°)	Azimuth (°)	Vertical Depth (ft)	+N/-S (ft)	+E/-W (ft)	Vertical Section (ft)	Dogleg Rate (°/100ft)	Build Rate (°/100ft)	Turn Rate (°/100ft)
2,160.0	0.00	0.00	2,160.0	0.0	0.0	0.0	0.00	0.00	0.00
2,200.0	0.00	0.00	2,200.0	0.0	0.0	0.0	0.00	0.00	0.00
2,240.0	0.00	0.00	2,240.0	0.0	0.0	0.0	0.00	0.00	0.00
2,280.0	0.00	0.00	2,280.0	0.0	0.0	0.0	0.00	0.00	0.00
2,320.0	0.00	0.00	2,320.0	0.0	0.0	0.0	0.00	0.00	0.00
2,360.0	0.00	0.00	2,360.0	0.0	0.0	0.0	0.00	0.00	0.00
2,400.0	0.00	0.00	2,400.0	0.0	0.0	0.0	0.00	0.00	0.00
2,440.0	0.00	0.00	2,440.0	0.0	0.0	0.0	0.00	0.00	0.00
2,480.0	0.00	0.00	2,480.0	0.0	0.0	0.0	0.00	0.00	0.00
2,520.0	0.00	0.00	2,520.0	0.0	0.0	0.0	0.00	0.00	0.00
2,560.0	0.00	0.00	2,560.0	0.0	0.0	0.0	0.00	0.00	0.00
2,600.0	0.00	0.00	2,600.0	0.0	0.0	0.0	0.00	0.00	0.00
2,640.0	0.00	0.00	2,640.0	0.0	0.0	0.0	0.00	0.00	0.00
2,680.0	0.00	0.00	2,680.0	0.0	0.0	0.0	0.00	0.00	0.00
2,720.0	0.00	0.00	2,720.0	0.0	0.0	0.0	0.00	0.00	0.00
2,760.0	0.00	0.00	2,760.0	0.0	0.0	0.0	0.00	0.00	0.00
2,800.0	0.00	0.00	2,800.0	0.0	0.0	0.0	0.00	0.00	0.00
2,840.0	0.00	0.00	2,840.0	0.0	0.0	0.0	0.00	0.00	0.00
2,880.0	0.00	0.00	2,880.0	0.0	0.0	0.0	0.00	0.00	0.00
2,920.0	0.00	0.00	2,920.0	0.0	0.0	0.0	0.00	0.00	0.00
2,960.0	0.00	0.00	2,960.0	0.0	0.0	0.0	0.00	0.00	0.00
3,000.0	0.00	0.00	3,000.0	0.0	0.0	0.0	0.00	0.00	0.00
3,040.0	0.00	0.00	3,040.0	0.0	0.0	0.0	0.00	0.00	0.00
3,080.0	0.00	0.00	3,080.0	0.0	0.0	0.0	0.00	0.00	0.00
3,120.0	0.00	0.00	3,120.0	0.0	0.0	0.0	0.00	0.00	0.00
3,160.0	0.00	0.00	3,160.0	0.0	0.0	0.0	0.00	0.00	0.00
3,200.0	0.00	0.00	3,200.0	0.0	0.0	0.0	0.00	0.00	0.00
3,240.0	0.00	0.00	3,240.0	0.0	0.0	0.0	0.00	0.00	0.00
3,280.0	0.00	0.00	3,280.0	0.0	0.0	0.0	0.00	0.00	0.00
3,320.0	0.00	0.00	3,320.0	0.0	0.0	0.0	0.00	0.00	0.00
3,360.0	0.00	0.00	3,360.0	0.0	0.0	0.0	0.00	0.00	0.00
3,400.0	0.00	0.00	3,400.0	0.0	0.0	0.0	0.00	0.00	0.00
3,440.0	0.00	0.00	3,440.0	0.0	0.0	0.0	0.00	0.00	0.00
3,480.0	0.00	0.00	3,480.0	0.0	0.0	0.0	0.00	0.00	0.00
3,520.0	0.00	0.00	3,520.0	0.0	0.0	0.0	0.00	0.00	0.00
3,560.0	0.00	0.00	3,560.0	0.0	0.0	0.0	0.00	0.00	0.00
3,600.0	0.00	0.00	3,600.0	0.0	0.0	0.0	0.00	0.00	0.00
3,640.0	0.00	0.00	3,640.0	0.0	0.0	0.0	0.00	0.00	0.00
3,680.0	0.00	0.00	3,680.0	0.0	0.0	0.0	0.00	0.00	0.00
3,720.0	0.00	0.00	3,720.0	0.0	0.0	0.0	0.00	0.00	0.00
3,760.0	0.00	0.00	3,760.0	0.0	0.0	0.0	0.00	0.00	0.00
3,800.0	0.00	0.00	3,800.0	0.0	0.0	0.0	0.00	0.00	0.00
3,840.0	0.00	0.00	3,840.0	0.0	0.0	0.0	0.00	0.00	0.00
3,880.0	0.00	0.00	3,880.0	0.0	0.0	0.0	0.00	0.00	0.00
3,920.0	0.00	0.00	3,920.0	0.0	0.0	0.0	0.00	0.00	0.00
3,960.0	0.00	0.00	3,960.0	0.0	0.0	0.0	0.00	0.00	0.00
4,000.0	0.00	0.00	4,000.0	0.0	0.0	0.0	0.00	0.00	0.00
4,040.0	0.00	0.00	4,040.0	0.0	0.0	0.0	0.00	0.00	0.00
4,080.0	0.00	0.00	4,080.0	0.0	0.0	0.0	0.00	0.00	0.00
4,120.0	0.00	0.00	4,120.0	0.0	0.0	0.0	0.00	0.00	0.00
4,160.0	0.00	0.00	4,160.0	0.0	0.0	0.0	0.00	0.00	0.00
4,200.0	0.00	0.00	4,200.0	0.0	0.0	0.0	0.00	0.00	0.00
4,240.0	0.00	0.00	4,240.0	0.0	0.0	0.0	0.00	0.00	0.00
4,280.0	0.00	0.00	4,280.0	0.0	0.0	0.0	0.00	0.00	0.00

<b>Database:</b>	Landmark	<b>Local Co-ordinate Reference:</b>	Well Razor #25-2514H
<b>Company:</b>	Whiting Oil & Gas	<b>TVD Reference:</b>	WELL @ 4777.7ft (Original Well Elev)
<b>Project:</b>	SEC.25-T10N-R58W	<b>MD Reference:</b>	WELL @ 4777.7ft (Original Well Elev)
<b>Site:</b>	Razor #25-2514H Pad Sec.25-T10N-R58W	<b>North Reference:</b>	True
<b>Well:</b>	Razor #25-2514H	<b>Survey Calculation Method:</b>	Minimum Curvature
<b>Wellbore:</b>	Wellbore #1		
<b>Design:</b>	Plan #1 (9-10-12)		

Planned Survey									
Measured Depth (ft)	Inclination (°)	Azimuth (°)	Vertical Depth (ft)	+N/-S (ft)	+E/-W (ft)	Vertical Section (ft)	Dogleg Rate (°/100ft)	Build Rate (°/100ft)	Turn Rate (°/100ft)
4,320.0	0.00	0.00	4,320.0	0.0	0.0	0.0	0.00	0.00	0.00
4,360.0	0.00	0.00	4,360.0	0.0	0.0	0.0	0.00	0.00	0.00
4,400.0	0.00	0.00	4,400.0	0.0	0.0	0.0	0.00	0.00	0.00
4,440.0	0.00	0.00	4,440.0	0.0	0.0	0.0	0.00	0.00	0.00
4,480.0	0.00	0.00	4,480.0	0.0	0.0	0.0	0.00	0.00	0.00
4,520.0	0.00	0.00	4,520.0	0.0	0.0	0.0	0.00	0.00	0.00
4,560.0	0.00	0.00	4,560.0	0.0	0.0	0.0	0.00	0.00	0.00
4,600.0	0.00	0.00	4,600.0	0.0	0.0	0.0	0.00	0.00	0.00
4,640.0	0.00	0.00	4,640.0	0.0	0.0	0.0	0.00	0.00	0.00
4,680.0	0.00	0.00	4,680.0	0.0	0.0	0.0	0.00	0.00	0.00
4,720.0	0.00	0.00	4,720.0	0.0	0.0	0.0	0.00	0.00	0.00
4,760.0	0.00	0.00	4,760.0	0.0	0.0	0.0	0.00	0.00	0.00
4,800.0	0.00	0.00	4,800.0	0.0	0.0	0.0	0.00	0.00	0.00
4,840.0	0.00	0.00	4,840.0	0.0	0.0	0.0	0.00	0.00	0.00
4,880.0	0.00	0.00	4,880.0	0.0	0.0	0.0	0.00	0.00	0.00
4,920.0	0.00	0.00	4,920.0	0.0	0.0	0.0	0.00	0.00	0.00
4,960.0	0.00	0.00	4,960.0	0.0	0.0	0.0	0.00	0.00	0.00
5,000.0	0.00	0.00	5,000.0	0.0	0.0	0.0	0.00	0.00	0.00
5,040.0	0.00	0.00	5,040.0	0.0	0.0	0.0	0.00	0.00	0.00
5,080.0	0.00	0.00	5,080.0	0.0	0.0	0.0	0.00	0.00	0.00
5,120.0	0.00	0.00	5,120.0	0.0	0.0	0.0	0.00	0.00	0.00
5,160.0	0.00	0.00	5,160.0	0.0	0.0	0.0	0.00	0.00	0.00
5,178.1	0.00	0.00	5,178.1	0.0	0.0	0.0	0.00	0.00	0.00
<b>KOP</b>									
5,200.0	2.41	178.78	5,200.0	-0.5	0.0	0.5	10.99	10.99	0.00
5,240.0	6.81	178.78	5,239.9	-3.7	0.1	3.7	11.00	11.00	0.00
5,280.0	11.21	178.78	5,279.4	-9.9	0.2	9.9	11.00	11.00	0.00
5,320.0	15.61	178.78	5,318.3	-19.2	0.4	19.2	11.00	11.00	0.00
5,360.0	20.01	178.78	5,356.3	-31.4	0.7	31.4	11.00	11.00	0.00
5,400.0	24.41	178.78	5,393.4	-46.5	1.0	46.5	11.00	11.00	0.00
5,440.0	28.81	178.78	5,429.1	-64.4	1.4	64.5	11.00	11.00	0.00
5,480.0	33.21	178.78	5,463.4	-85.0	1.8	85.1	11.00	11.00	0.00
5,520.0	37.61	178.78	5,496.0	-108.2	2.3	108.2	11.00	11.00	0.00
5,560.0	42.01	178.78	5,526.7	-133.8	2.8	133.8	11.00	11.00	0.00
5,575.0	43.66	178.78	5,537.7	-144.0	3.1	144.0	11.00	11.00	0.00
<b>NIORARA TOP</b>									
5,600.0	46.41	178.78	5,555.4	-161.7	3.4	161.7	11.00	11.00	0.00
5,640.0	50.81	178.78	5,581.8	-191.7	4.1	191.7	11.00	11.00	0.00
5,680.0	55.21	178.78	5,605.9	-223.6	4.7	223.6	11.00	11.00	0.00
5,720.0	59.61	178.78	5,627.4	-257.3	5.5	257.3	11.00	11.00	0.00
5,760.0	64.01	178.78	5,646.3	-292.5	6.2	292.6	11.00	11.00	0.00
5,800.0	68.41	178.78	5,662.4	-329.1	7.0	329.2	11.00	11.00	0.00
5,840.0	72.81	178.78	5,675.7	-366.8	7.8	366.9	11.00	11.00	0.00
5,880.0	77.21	178.78	5,686.1	-405.4	8.6	405.5	11.00	11.00	0.00
5,920.0	81.61	178.78	5,693.4	-444.7	9.4	444.8	11.00	11.00	0.00
5,960.0	86.01	178.78	5,697.7	-484.5	10.3	484.6	11.00	11.00	0.00
5,996.3	90.00	178.78	5,699.0	-520.7	11.1	520.9	11.00	11.00	0.00
<b>End of Build - 7"</b>									
6,000.0	90.00	178.78	5,699.0	-524.4	11.1	524.6	0.03	0.03	0.00
6,040.0	90.00	178.78	5,699.0	-564.4	12.0	564.6	0.00	0.00	0.00
6,080.0	90.00	178.78	5,699.0	-604.4	12.8	604.6	0.00	0.00	0.00
6,120.0	90.00	178.78	5,699.0	-644.4	13.7	644.6	0.00	0.00	0.00
6,160.0	90.00	178.78	5,699.0	-684.4	14.5	684.6	0.00	0.00	0.00

<b>Database:</b>	Landmark	<b>Local Co-ordinate Reference:</b>	Well Razor #25-2514H
<b>Company:</b>	Whiting Oil & Gas	<b>TVD Reference:</b>	WELL @ 4777.7ft (Original Well Elev)
<b>Project:</b>	SEC.25-T10N-R58W	<b>MD Reference:</b>	WELL @ 4777.7ft (Original Well Elev)
<b>Site:</b>	Razor #25-2514H Pad Sec.25-T10N-R58W	<b>North Reference:</b>	True
<b>Well:</b>	Razor #25-2514H	<b>Survey Calculation Method:</b>	Minimum Curvature
<b>Wellbore:</b>	Wellbore #1		
<b>Design:</b>	Plan #1 (9-10-12)		

Planned Survey									
Measured Depth (ft)	Inclination (°)	Azimuth (°)	Vertical Depth (ft)	+N/-S (ft)	+E/-W (ft)	Vertical Section (ft)	Dogleg Rate (°/100ft)	Build Rate (°/100ft)	Turn Rate (°/100ft)
6,200.0	90.00	178.78	5,699.0	-724.4	15.4	724.6	0.00	0.00	0.00
6,240.0	90.00	178.78	5,699.0	-764.4	16.2	764.6	0.00	0.00	0.00
6,280.0	90.00	178.78	5,699.0	-804.4	17.1	804.6	0.00	0.00	0.00
6,320.0	90.00	178.78	5,699.0	-844.4	17.9	844.6	0.00	0.00	0.00
6,360.0	90.00	178.78	5,699.0	-884.4	18.8	884.6	0.00	0.00	0.00
6,400.0	90.00	178.78	5,699.0	-924.4	19.6	924.6	0.00	0.00	0.00
6,440.0	90.00	178.78	5,699.0	-964.3	20.5	964.6	0.00	0.00	0.00
6,480.0	90.00	178.78	5,699.0	-1,004.3	21.3	1,004.6	0.00	0.00	0.00
6,520.0	90.00	178.78	5,699.0	-1,044.3	22.2	1,044.6	0.00	0.00	0.00
6,560.0	90.00	178.78	5,699.0	-1,084.3	23.0	1,084.6	0.00	0.00	0.00
6,600.0	90.00	178.78	5,699.0	-1,124.3	23.9	1,124.6	0.00	0.00	0.00
6,640.0	90.00	178.78	5,699.0	-1,164.3	24.7	1,164.6	0.00	0.00	0.00
6,680.0	90.00	178.78	5,699.0	-1,204.3	25.6	1,204.6	0.00	0.00	0.00
6,720.0	90.00	178.78	5,699.0	-1,244.3	26.4	1,244.6	0.00	0.00	0.00
6,760.0	90.00	178.78	5,699.0	-1,284.3	27.3	1,284.6	0.00	0.00	0.00
6,800.0	90.00	178.78	5,699.0	-1,324.3	28.1	1,324.6	0.00	0.00	0.00
6,840.0	90.00	178.78	5,699.0	-1,364.3	29.0	1,364.6	0.00	0.00	0.00
6,880.0	90.00	178.78	5,699.0	-1,404.2	29.8	1,404.6	0.00	0.00	0.00
6,920.0	90.00	178.78	5,699.0	-1,444.2	30.7	1,444.6	0.00	0.00	0.00
6,960.0	90.00	178.78	5,699.0	-1,484.2	31.5	1,484.6	0.00	0.00	0.00
7,000.0	90.00	178.78	5,699.0	-1,524.2	32.4	1,524.6	0.00	0.00	0.00
7,040.0	90.00	178.78	5,699.0	-1,564.2	33.2	1,564.6	0.00	0.00	0.00
7,080.0	90.00	178.78	5,699.0	-1,604.2	34.0	1,604.6	0.00	0.00	0.00
7,120.0	90.00	178.78	5,699.0	-1,644.2	34.9	1,644.6	0.00	0.00	0.00
7,160.0	90.00	178.78	5,699.0	-1,684.2	35.7	1,684.6	0.00	0.00	0.00
7,200.0	90.00	178.78	5,699.0	-1,724.2	36.6	1,724.6	0.00	0.00	0.00
7,240.0	90.00	178.78	5,699.0	-1,764.2	37.4	1,764.6	0.00	0.00	0.00
7,280.0	90.00	178.78	5,699.0	-1,804.2	38.3	1,804.6	0.00	0.00	0.00
7,320.0	90.00	178.78	5,699.0	-1,844.1	39.1	1,844.6	0.00	0.00	0.00
7,360.0	90.00	178.78	5,699.0	-1,884.1	40.0	1,884.6	0.00	0.00	0.00
7,400.0	90.00	178.78	5,699.0	-1,924.1	40.8	1,924.6	0.00	0.00	0.00
7,440.0	90.00	178.78	5,699.0	-1,964.1	41.7	1,964.6	0.00	0.00	0.00
7,480.0	90.00	178.78	5,699.0	-2,004.1	42.5	2,004.6	0.00	0.00	0.00
7,520.0	90.00	178.78	5,699.0	-2,044.1	43.4	2,044.6	0.00	0.00	0.00
7,560.0	90.00	178.78	5,699.0	-2,084.1	44.2	2,084.6	0.00	0.00	0.00
7,600.0	90.00	178.78	5,699.0	-2,124.1	45.1	2,124.6	0.00	0.00	0.00
7,640.0	90.00	178.78	5,699.0	-2,164.1	45.9	2,164.6	0.00	0.00	0.00
7,680.0	90.00	178.78	5,699.0	-2,204.1	46.8	2,204.6	0.00	0.00	0.00
7,720.0	90.00	178.78	5,699.0	-2,244.1	47.6	2,244.6	0.00	0.00	0.00
7,760.0	90.00	178.78	5,699.0	-2,284.0	48.5	2,284.6	0.00	0.00	0.00
7,800.0	90.00	178.78	5,699.0	-2,324.0	49.3	2,324.6	0.00	0.00	0.00
7,840.0	90.00	178.78	5,699.0	-2,364.0	50.2	2,364.6	0.00	0.00	0.00
7,880.0	90.00	178.78	5,699.0	-2,404.0	51.0	2,404.6	0.00	0.00	0.00
7,920.0	90.00	178.78	5,699.0	-2,444.0	51.9	2,444.6	0.00	0.00	0.00
7,960.0	90.00	178.78	5,699.0	-2,484.0	52.7	2,484.6	0.00	0.00	0.00
8,000.0	90.00	178.78	5,699.0	-2,524.0	53.6	2,524.6	0.00	0.00	0.00
8,040.0	90.00	178.78	5,699.0	-2,564.0	54.4	2,564.6	0.00	0.00	0.00
8,080.0	90.00	178.78	5,699.0	-2,604.0	55.3	2,604.6	0.00	0.00	0.00
8,120.0	90.00	178.78	5,699.0	-2,644.0	56.1	2,644.6	0.00	0.00	0.00
8,160.0	90.00	178.78	5,699.0	-2,684.0	57.0	2,684.6	0.00	0.00	0.00
8,200.0	90.00	178.78	5,699.0	-2,723.9	57.8	2,724.6	0.00	0.00	0.00
8,240.0	90.00	178.78	5,699.0	-2,763.9	58.7	2,764.6	0.00	0.00	0.00
8,280.0	90.00	178.78	5,699.0	-2,803.9	59.5	2,804.6	0.00	0.00	0.00
8,320.0	90.00	178.78	5,699.0	-2,843.9	60.4	2,844.6	0.00	0.00	0.00

<b>Database:</b>	Landmark	<b>Local Co-ordinate Reference:</b>	Well Razor #25-2514H
<b>Company:</b>	Whiting Oil & Gas	<b>TVD Reference:</b>	WELL @ 4777.7ft (Original Well Elev)
<b>Project:</b>	SEC.25-T10N-R58W	<b>MD Reference:</b>	WELL @ 4777.7ft (Original Well Elev)
<b>Site:</b>	Razor #25-2514H Pad Sec.25-T10N-R58W	<b>North Reference:</b>	True
<b>Well:</b>	Razor #25-2514H	<b>Survey Calculation Method:</b>	Minimum Curvature
<b>Wellbore:</b>	Wellbore #1		
<b>Design:</b>	Plan #1 (9-10-12)		

Planned Survey									
Measured Depth (ft)	Inclination (°)	Azimuth (°)	Vertical Depth (ft)	+N/-S (ft)	+E/-W (ft)	Vertical Section (ft)	Dogleg Rate (°/100ft)	Build Rate (°/100ft)	Turn Rate (°/100ft)
8,360.0	90.00	178.78	5,699.0	-2,883.9	61.2	2,884.6	0.00	0.00	0.00
8,400.0	90.00	178.78	5,699.0	-2,923.9	62.1	2,924.6	0.00	0.00	0.00
8,440.0	90.00	178.78	5,699.0	-2,963.9	62.9	2,964.6	0.00	0.00	0.00
8,480.0	90.00	178.78	5,699.0	-3,003.9	63.8	3,004.6	0.00	0.00	0.00
8,520.0	90.00	178.78	5,699.0	-3,043.9	64.6	3,044.6	0.00	0.00	0.00
8,560.0	90.00	178.78	5,699.0	-3,083.9	65.5	3,084.6	0.00	0.00	0.00
8,600.0	90.00	178.78	5,699.0	-3,123.9	66.3	3,124.6	0.00	0.00	0.00
8,640.0	90.00	178.78	5,699.0	-3,163.8	67.2	3,164.6	0.00	0.00	0.00
8,680.0	90.00	178.78	5,699.0	-3,203.8	68.0	3,204.6	0.00	0.00	0.00
8,720.0	90.00	178.78	5,699.0	-3,243.8	68.8	3,244.6	0.00	0.00	0.00
8,760.0	90.00	178.78	5,699.0	-3,283.8	69.7	3,284.6	0.00	0.00	0.00
8,800.0	90.00	178.78	5,699.0	-3,323.8	70.5	3,324.6	0.00	0.00	0.00
8,840.0	90.00	178.78	5,699.0	-3,363.8	71.4	3,364.6	0.00	0.00	0.00
8,880.0	90.00	178.78	5,699.0	-3,403.8	72.2	3,404.6	0.00	0.00	0.00
8,920.0	90.00	178.78	5,699.0	-3,443.8	73.1	3,444.6	0.00	0.00	0.00
8,960.0	90.00	178.78	5,699.0	-3,483.8	73.9	3,484.6	0.00	0.00	0.00
9,000.0	90.00	178.78	5,699.0	-3,523.8	74.8	3,524.6	0.00	0.00	0.00
9,040.0	90.00	178.78	5,699.0	-3,563.8	75.6	3,564.6	0.00	0.00	0.00
9,080.0	90.00	178.78	5,699.0	-3,603.7	76.5	3,604.6	0.00	0.00	0.00
9,120.0	90.00	178.78	5,699.0	-3,643.7	77.3	3,644.6	0.00	0.00	0.00
9,160.0	90.00	178.78	5,699.0	-3,683.7	78.2	3,684.6	0.00	0.00	0.00
9,200.0	90.00	178.78	5,699.0	-3,723.7	79.0	3,724.6	0.00	0.00	0.00
9,240.0	90.00	178.78	5,699.0	-3,763.7	79.9	3,764.6	0.00	0.00	0.00
9,280.0	90.00	178.78	5,699.0	-3,803.7	80.7	3,804.6	0.00	0.00	0.00
9,320.0	90.00	178.78	5,699.0	-3,843.7	81.6	3,844.6	0.00	0.00	0.00
9,360.0	90.00	178.78	5,699.0	-3,883.7	82.4	3,884.6	0.00	0.00	0.00
9,400.0	90.00	178.78	5,699.0	-3,923.7	83.3	3,924.6	0.00	0.00	0.00
9,440.0	90.00	178.78	5,699.0	-3,963.7	84.1	3,964.6	0.00	0.00	0.00
9,480.0	90.00	178.78	5,699.0	-4,003.7	85.0	4,004.6	0.00	0.00	0.00
9,520.0	90.00	178.78	5,699.0	-4,043.6	85.8	4,044.6	0.00	0.00	0.00
9,560.0	90.00	178.78	5,699.0	-4,083.6	86.7	4,084.6	0.00	0.00	0.00
9,600.0	90.00	178.78	5,699.0	-4,123.6	87.5	4,124.6	0.00	0.00	0.00
9,640.0	90.00	178.78	5,699.0	-4,163.6	88.4	4,164.6	0.00	0.00	0.00
9,680.0	90.00	178.78	5,699.0	-4,203.6	89.2	4,204.6	0.00	0.00	0.00
9,720.0	90.00	178.78	5,699.0	-4,243.6	90.1	4,244.6	0.00	0.00	0.00
9,760.0	90.00	178.78	5,699.0	-4,283.6	90.9	4,284.6	0.00	0.00	0.00
9,800.0	90.00	178.78	5,699.0	-4,323.6	91.8	4,324.6	0.00	0.00	0.00
9,820.0	90.00	178.78	5,699.0	-4,343.6	92.2	4,344.6	0.00	0.00	0.00

Casing Points				
Measured Depth (ft)	Vertical Depth (ft)	Name	Casing Diameter (")	Hole Diameter (")
5,996.3	5,699.0	7"	7	8-3/4

Formations				
Measured Depth (ft)	Vertical Depth (ft)	Name	Lithology	Dip (°) Dip Direction (°)
5,575.0	5,537.7	NIOBARRA TOP		0.00



<b>Database:</b>	Landmark	<b>Local Co-ordinate Reference:</b>	Well Razor #25-2514H
<b>Company:</b>	Whiting Oil & Gas	<b>TVD Reference:</b>	WELL @ 4777.7ft (Original Well Elev)
<b>Project:</b>	SEC.25-T10N-R58W	<b>MD Reference:</b>	WELL @ 4777.7ft (Original Well Elev)
<b>Site:</b>	Razor #25-2514H Pad Sec.25-T10N-R58W	<b>North Reference:</b>	True
<b>Well:</b>	Razor #25-2514H	<b>Survey Calculation Method:</b>	Minimum Curvature
<b>Wellbore:</b>	Wellbore #1		
<b>Design:</b>	Plan #1 (9-10-12)		

Plan Annotations					
Measured Depth (ft)	Vertical Depth (ft)	Local Coordinates		Comment	
		+N/-S (ft)	+E/-W (ft)		
5,178.1	5,178.1	0.0	0.0	KOP	
5,996.3	5,699.0	-520.7	11.1	End of Build	