

*MULTI-WELL PLAN*  
*T9N, R59W, 6th P.M.*

TARGET BOTTOM HOLE  
TIMBRO LC13-77-1HN  
SEC. 13, T9N, R59W  
LAT: 40.756475°  
LONG: 103.929922°  
660' FNL 1650' FWL

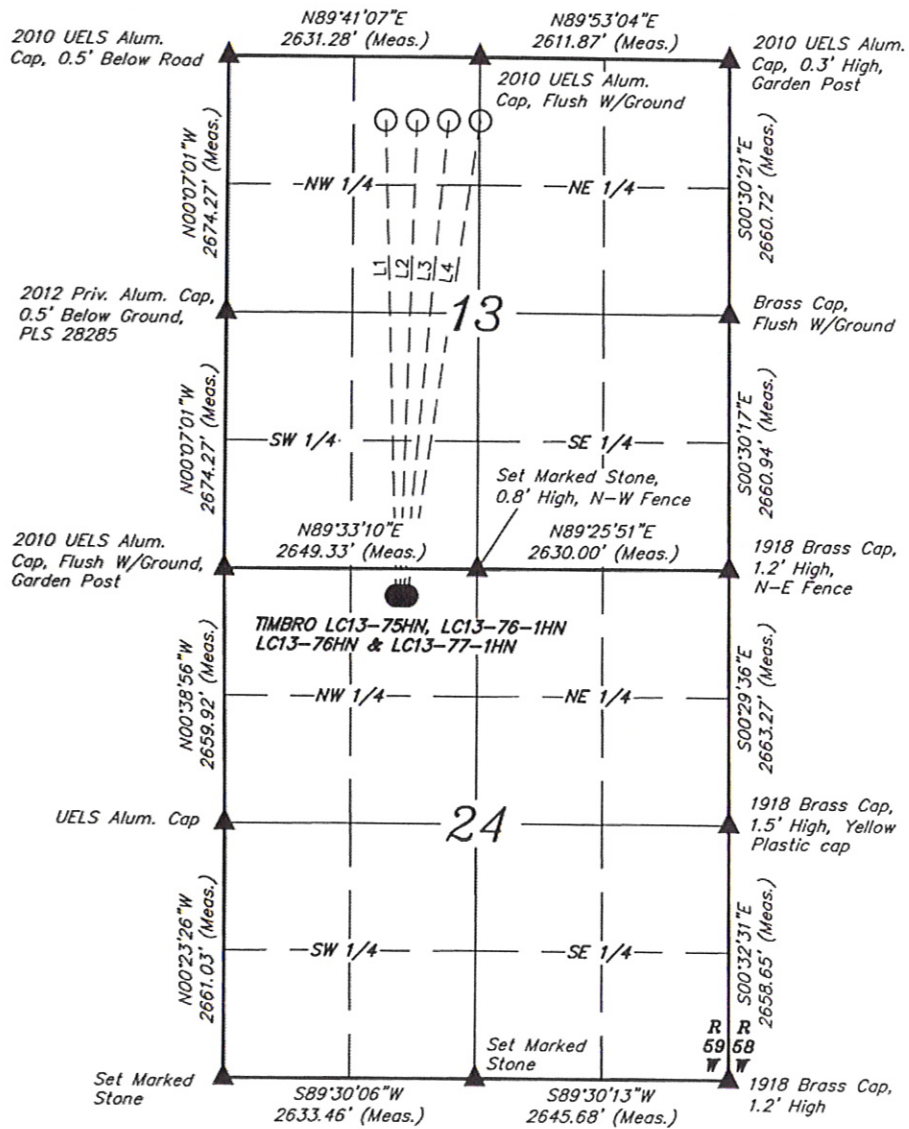
TARGET BOTTOM HOLE  
TIMBRO LC13-76HN  
SEC. 13, T9N, R59W  
LAT: 40.756483°  
LONG: 103.928731°  
660' FNL 1980' FWL

TARGET BOTTOM HOLE  
TIMBRO LC13-76-1HN  
SEC. 13, T9N, R59W  
LAT: 40.756489°  
LONG: 103.927542°  
660' FNL 2310' FWL

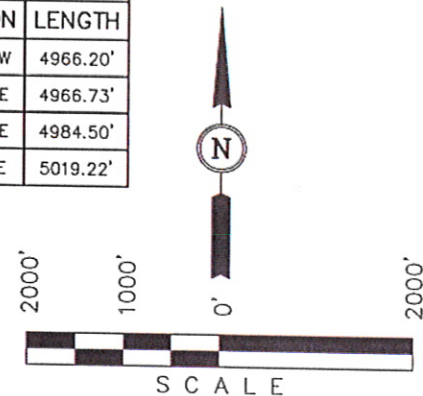
TARGET BOTTOM HOLE  
TIMBRO LC13-75HN  
SEC. 13, T9N, R59W  
LAT: 40.756494°  
LONG: 103.926350°  
660' FNL 2640' FWL

NOBLE ENERGY, INC.

Well location, TIMBRO LC13-75HN, LC13-76-1HN, LC13-76HN & LC13-77-1HN located as shown in the NE 1/4 NW 1/4 of Section 24, T9N, R59W, 6th P.M., Weld County, Colorado.



LINE TABLE		
LINE	DIRECTION	LENGTH
L1	N01°52'40"W	4966.20'
L2	N01°29'49"E	4966.73'
L3	N04°51'34"E	4984.50'
L4	N08°11'12"E	5019.22'



LEGEND:

- ▲ = SECTION CORNERS LOCATED.  
● = PROPOSED WELL HEAD.  
○ = TARGET BOTTOM HOLE.

UINTAH ENGINEERING & LAND SURVEYING  
85 SOUTH 200 EAST - VERNAL, UTAH 84078  
(435) 789-1017

SCALE 1" = 2000'	DATE SURVEYED: 09-03-12	DATE DRAWN: 10-05-12
PARTY ZANE BULLARD A.G. J.M.H.	REFERENCES G.L.O. PLAT	
WEATHER WARM	FILE NOBLE ENERGY, INC.	



NOBLE ENERGY, INC.

MULTI-WELL PLAN

TIMBRO LC13-77-1HN, LC13-76HN,  
LC13-76-1HN & LC13-75HN  
SECTION 24, T9N, R59W, 6th P.M.

DATE: 10-05-12  
DRAWN BY: J.M.H.

