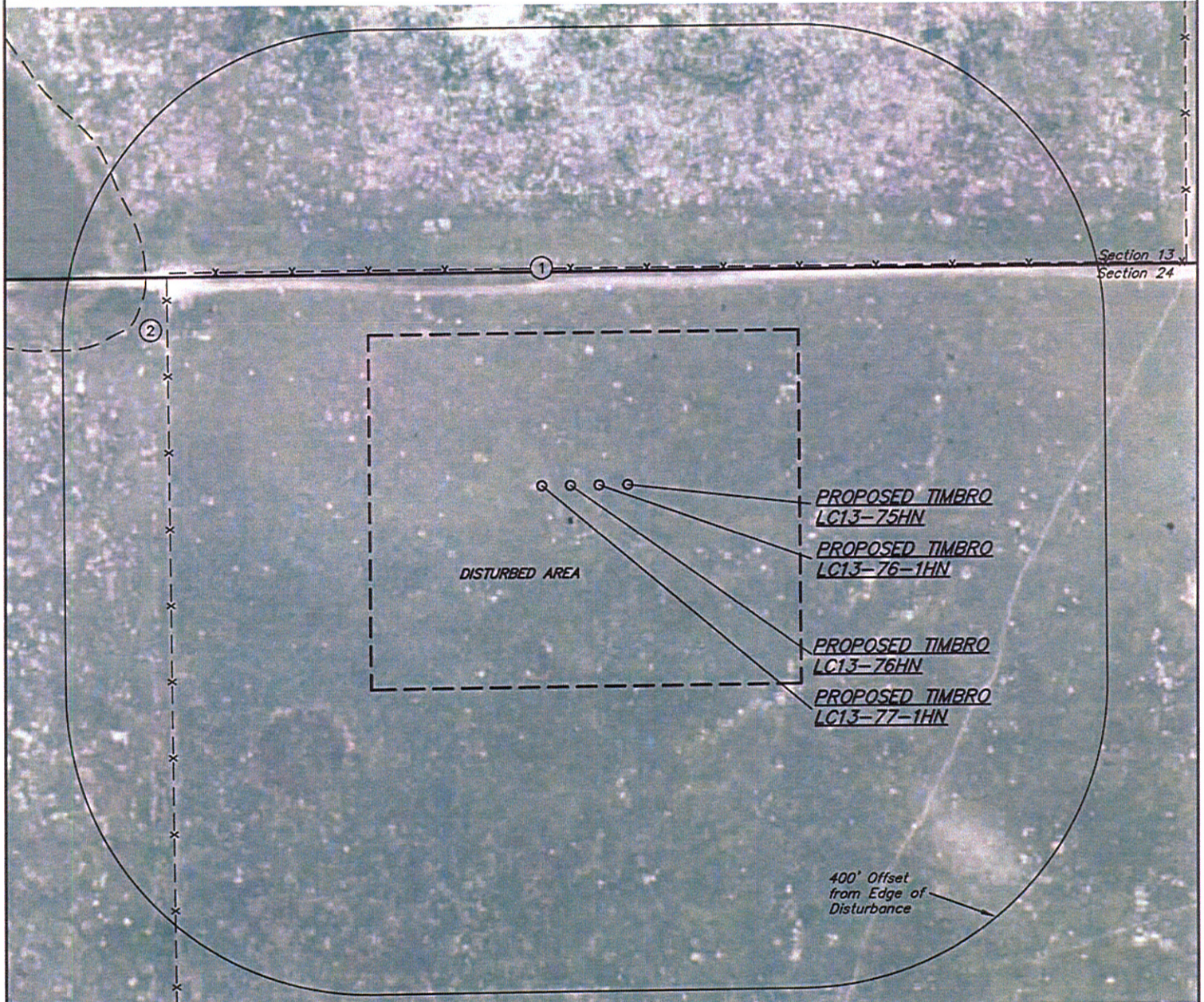
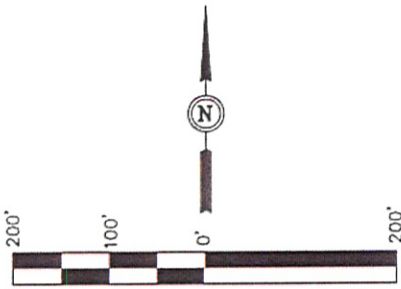


NOBLE ENERGY, INC.

LOCATION DRAWING

DATE: 10-05-12  
DRAWN BY: J.M.H.

TIMBRO LC13-77-1HN, LC13-76HN,  
LC13-76-1HN & LC13-75HN  
SECTION 24, T9N, R59W, 6th P.M.



NOTE:  
DIRECTION AND DISTANCE TO IMPROVEMENTS AND NEAREST FEATURES ARE FROM PROPOSED TIMBRO LC13-77-1HN.

IMPROVEMENTS:

- ① FENCE 284' N, 487' W
- ② DRY POND 575' NW

PAD DETAILS:

WELL HEAD SPACING = 37.5'

ACREAGE:

DISTURBED AREA = 6.0 AC.

NEAREST FEATURE: BUILDING 5280' +, PUBLIC ROAD  
1848' NW (CR 119), ABOVE GROUND UTILITY 1806'  
NW, RAILROAD 5280' +, PROPERTY LINE 280' N

UINTAH ENGINEERING & LAND SURVEYING  
85 So. 200 East \* Vernal, Utah 84078 \* (435) 789-1017