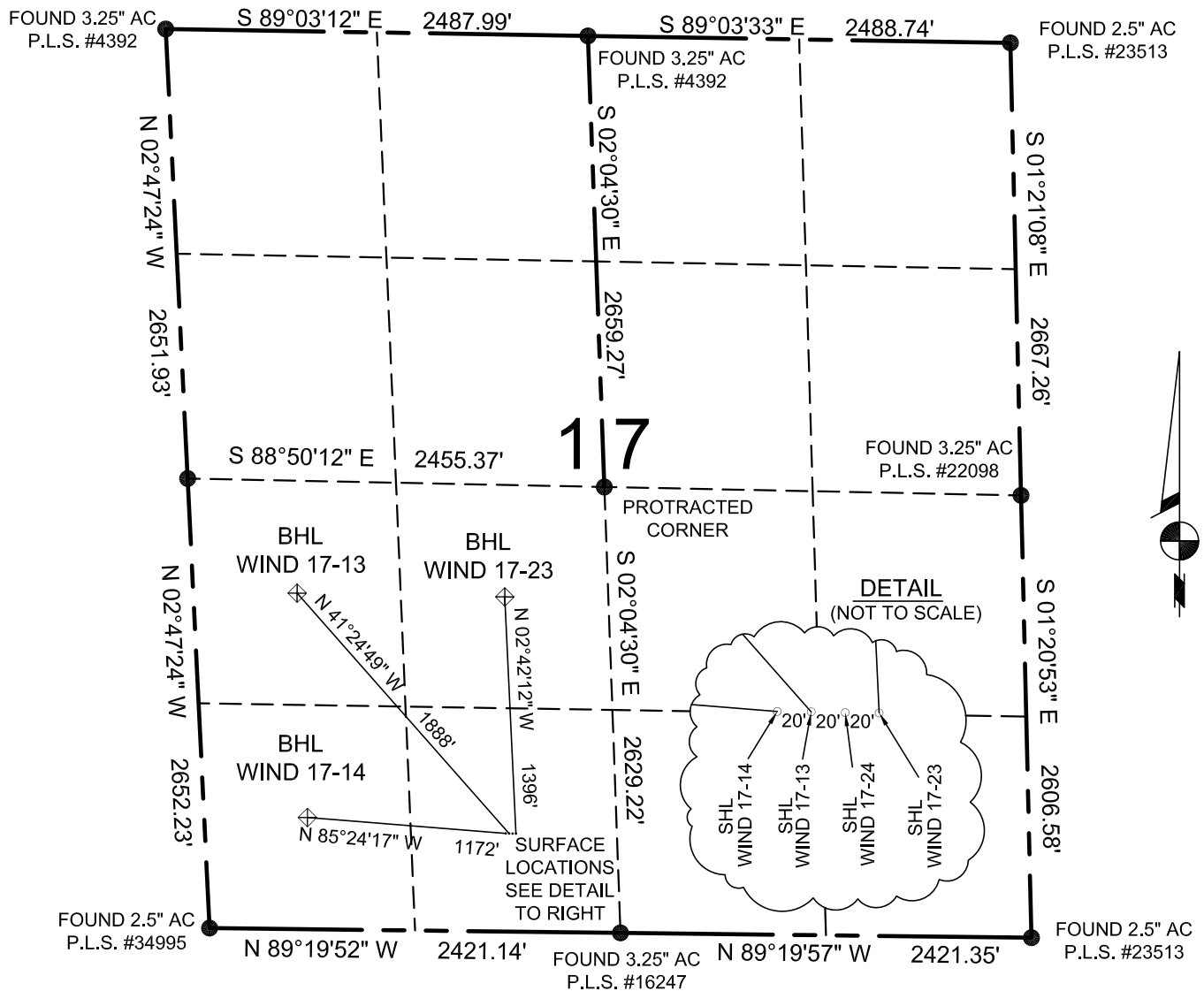


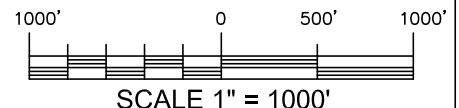
PAD DRAWING - WIND 17-13, WIND 17-14, WIND 17-23 WIND 17-24

SECTION 17, TOWNSHIP 4 NORTH, RANGE 67 WEST 6TH P.M., WELD COUNTY



- NOTES:
1. THIS SURVEY WAS DONE BY GPS METHODS AND CONFORMS TO THE MINIMUM STANDARDS AS SET BY THE C.O.G.C.C. RULE NO. 215.
 2. ELEVATIONS SHOWN AT THE WELL HEAD, AS WELL AS HORIZONTAL CONTROL, ARE BASED ON GPS-RTK VALUES DERIVED FROM DOING 2-HOUR STATIC GPS SESSIONS AND REDUCTIONS USING O.P.U.S. SOLUTIONS. VERTICAL = NAVD88 HORIZONTAL = NAD83/92
 3. THE BEARINGS AS SHOWN HEREON ARE BASED ON GPS OBSERVATIONS BETWEEN THE MONUMENTS SHOWN HEREON AS FOUND IN THE FIELD DATE BELOW.
 4. DISTANCES SHOWN ARE AT GROUND LEVEL, AS MEASURED IN THE FIELD, WITH TIES TO WELLS MEASURED AT A PERPENDICULAR TO SECTION LINES.

WIND 17-14	WIND 17-13	WIND 17-24	WIND 17-23
<p>SURFACE LOCATION 1770' FWL & 578' FSL N.A.D. 83 LAT = 40.30739°N LON = 104.91675°W P.D.O.P. = 2.6 G.P.S. OPERATOR C. VANMATRE</p> <p>BOTTOM HOLE LOCATION 607' FWL & 658' FSL N.A.D. 83 LAT = 40.30767°N LON = 104.92094°W P.D.O.P. = 1.9 G.P.S. OPERATOR C. VANMATRE</p>	<p>SURFACE LOCATION 1790' FWL & 578' FSL N.A.D. 83 LAT = 40.30739°N LON = 104.91668°W P.D.O.P. = 2.9 G.P.S. OPERATOR C. VANMATRE</p> <p>BOTTOM HOLE LOCATION 612' FWL & 1979' FSL N.A.D. 83 LAT = 40.331130°N LON = 104.92112°W P.D.O.P. = 3.0 G.P.S. OPERATOR C. VANMATRE</p>	<p>SURFACE LOCATION 1810' FSL & 578' FSL N.A.D. 83 LAT = 40.30739°N LON = 104.91661°W P.D.O.P. = 2.1 G.P.S. OPERATOR C. VANMATRE</p>	<p>SURFACE LOCATION 1830' FWL & 577' FSL N.A.D. 83 LAT = 40.30739°N LON = 104.91654°W P.D.O.P. = 1.9 G.P.S. OPERATOR C. VANMATRE</p> <p>BOTTOM HOLE LOCATION 1832' FWL & 1971' FSL N.A.D. 83 LAT = 40.31122°N LON = 104.9674°W P.D.O.P. = 1.8 G.P.S. OPERATOR C. VANMATRE</p>



POWERTM
Surveying Company, Inc.
Established 1948

120 W. 84TH AVENUE
THORNTON, COLORADO 80260
WWW.POWERSURVEYING.COM

PH. 303-702-1617
FAX. 303-702-1488

DATE OF FIELD WORK: 11/2/12
DATE OF COMPLETION: 11/19/12
PROJECT NUMBER: 501-12-233A