

HALLIBURTON



02617633

WPX ENERGY ROCKY MOUNTAIN LLC-EBUS

**KP 533-18
KOKOPELLI
Garfield County , Colorado**

Squeeze Perfs
26-Oct-2012

Post Job Summary

The Road to Excellence Starts with Safety

Sold To #: 300721	Ship To #: 2925160	Quote #:	Sales Order #: 9879647
Customer: WPX ENERGY ROCKY MOUNTAIN LLC-EBUS	Customer Rep: Brady, Jeff		
Well Name: KP	Well #: 533-18	API/UWI #: 05-045-20628	
Field: KOKOPELLI	City (SAP): SILT	County/Parish: Garfield	State: Colorado
Lat: N 39.522 deg. OR N 39 deg. 31 min. 20.377 secs.	Long: W 107.595 deg. OR W -108 deg. 24 min. 18.965 secs.		
Contractor: WORKOVER	Rig/Platform Name/Num: WORKOVER		
Job Purpose: Squeeze Perfs			
Well Type: Development Well	Job Type: Squeeze Perfs		
Sales Person: MAYO, MARK	Srv Supervisor: DEUSSEN, EDWARD	MBU ID Emp #: 485182	

Job Personnel

HES Emp Name	Exp Hrs	Emp #	HES Emp Name	Exp Hrs	Emp #	HES Emp Name	Exp Hrs	Emp #
BANKS, BRENT A	11.0	371353	DEUSSEN, EDWARD Eric	11.0	485182	GRAGERT, JEFFREY Robert	11.0	528091
LINN, PAUL Andrew	11.0	479143	MILLER, KEVIN Paul	11.0	443040			

Equipment

HES Unit #	Distance-1 way	HES Unit #	Distance-1 way	HES Unit #	Distance-1 way	HES Unit #	Distance-1 way

Job Hours

Date	On Location Hours	Operating Hours	Date	On Location Hours	Operating Hours	Date	On Location Hours	Operating Hours

TOTAL Total is the sum of each column separately

Job				Job Times			
Formation Name					Date	Time	Time Zone
Formation Depth (MD)	Top		Bottom	Called Out	26 - Oct - 2012	02:00	MST
Form Type		BHST		On Location	26 - Oct - 2012	06:00	MST
Job depth MD	1866. ft	Job Depth TVD	1866. ft	Job Started	26 - Oct - 2012	08:36	MST
Water Depth		Wk Ht Above Floor	5. ft	Job Completed	26 - Oct - 2012	15:25	MST
Perforation Depth (MD)	From		To	Departed Loc	26 - Oct - 2012	17:00	MST

Well Data

Description	New / Used	Max pressure psig	Size in	ID in	Weight lbm/ft	Thread	Grade	Top MD ft	Bottom MD ft	Top TVD ft	Bottom TVD ft

Tools and Accessories

Type	Size	Qty	Make	Depth	Type	Size	Qty	Make	Depth	Type	Size	Qty	Make
Guide Shoe					Packer					Top Plug			
Float Shoe					Bridge Plug					Bottom Plug			
Float Collar					Retainer					SSR plug set			
Insert Float										Plug Container			
Stage Tool										Centralizers			

Miscellaneous Materials

Gelling Agt		Conc		Surfactant		Conc		Acid Type		Qty		Conc	%
Treatment Fld		Conc		Inhibitor		Conc		Sand Type		Size		Qty	

Fluid Data

Stage/Plug #: 1													
Fluid #	Stage Type	Fluid Name			Qty	Qty uom	Mixing Density lbm/gal	Yield ft ³ /sk	Mix Fluid Gal/sk	Rate bbl/min	Total Mix Fluid Gal/sk		

Stage/Plug #: 1													
Fluid #	Stage Type	Fluid Name			Qty	Qty uom	Mixing Density uom	Yield uom	Mix Fluid uom	Rate uom	Total Mix Fluid uom		
1	Injection Test				7.00	bbl	8.33	.0	.0	.0			

Stage/Plug #: 1									
Fluid #	Stage Type	Fluid Name	Qty	Qty uom	Mixing Density lbm/gal	Yield ft ³ /sk	Mix Fluid Gal/sk	Rate bbl/min	Total Mix Fluid Gal/sk
2	SqueezeCem Tail Cement	SQUEEZECEM (TM) SYSTEM (452971)	50.0	sacks	17.	.99	3.77		3.77
3.77 Gal		FRESH WATER							
3	Displacement		7.00	bbl	8.33	.0	.0	.0	
4	Injection Test		5.00	bbl	.	.0	.0	.0	
5	SUPER FLUSH 101	SUPER FLUSH 101 - SBM (12199)	15.00	bbl	10.	.0	.0	.0	
6	Spacer		5.00	bbl	.	.0	.0	.0	
7	2nd Stage Tail	SQUEEZECEM (TM) SYSTEM (452971)	75.0	sacks	17.	.99	3.77		3.77
3.77 Gal		FRESH WATER							
8	Displacement		5.00	bbl	.	.0	.0	.0	
Calculated Values		Pressures		Volumes					
Displacement		Shut In: Instant		Lost Returns		Cement Slurry		Pad	
Top Of Cement		5 Min		Cement Returns		Actual Displacement		Treatment	
Frac Gradient		15 Min		Spacers		Load and Breakdown		Total Job	
Rates									
Circulating		Mixing		Displacement		Avg. Job			
Cement Left In Pipe	Amount	0 ft	Reason	Shoe Joint					
Frac Ring # 1 @	ID	Frac ring # 2 @	ID	Frac Ring # 3 @	ID	Frac Ring # 4 @	ID		
The Information Stated Herein Is Correct				Customer Representative Signature					

The Road to Excellence Starts with Safety

Sold To #: 300721		Ship To #: 2925160		Quote #:		Sales Order #: 9879647	
Customer: WPX ENERGY ROCKY MOUNTAIN LLC-EBUS				Customer Rep: Brady, Jeff			
Well Name: KP			Well #: 533-18			API/UWI #: 05-045-20628	
Field: KOKOPELLI		City (SAP): SILT		County/Parish: Garfield		State: Colorado	
Legal Description:							
Lat: N 39.522 deg. OR N 39 deg. 31 min. 20.377 secs.				Long: W 107.595 deg. OR W -108 deg. 24 min. 18.965 secs.			
Contractor: WORKOVER			Rig/Platform Name/Num: WORKOVER				
Job Purpose: Squeeze Perfs						Ticket Amount:	
Well Type: Development Well			Job Type: Squeeze Perfs				
Sales Person: MAYO, MARK			Srv Supervisor: DEUSSEN, EDWARD			MBU ID Emp #: 485182	

Activity Description	Date/Time	Cht #	Rate bbl/ min	Volume bbl		Pressure psig		Comments
				Stage	Total	Tubing	Casing	
Call Out	10/26/2012 02:00							CREW ALREADY IN FIELD
Pre-Convoy Safety Meeting	10/26/2012 04:00							ALL HES PERSONNEL
Crew Leave Yard	10/26/2012 04:15							1 ELITE, 1 BODYLOAD, 1 SUPERFLUSH TRANSPORT, 1 PICKUP
Arrive At Loc	10/26/2012 06:00							FIRST ON LOCATION
Assessment Of Location Safety Meeting	10/26/2012 06:15							
Pre-Rig Up Safety Meeting	10/26/2012 06:30							ALL HES PERSONNEL
Rig-Up Equipment	10/26/2012 06:45							MANIFOLD ON GROUND, 1 HARD LINE TO FLOOR, 1 HARD LINE TO WASH UP TANK, 1 WATER LINE TO WATER TRUCK, 1 BULK HOSE TO BODYLOAD, 1 HOSE TO SUPERFLUSH
Pre-Job Safety Meeting	10/26/2012 08:00							ALL HES PERSONNEL AND RIG CREW
Start Job	10/26/2012 08:36	1						SQUEEZE #1 - RETAINER @ 1866', PERFS @ 1950', BRIDGE PLUG @ 4000'
Pump Water	10/26/2012 08:37	2	1	1			.0	FILL LINES
Pressure Test	10/26/2012 08:42	4						PRESSURED UP TO 4718 PSI - PRESSURE HELD WELL

Activity Description	Date/Time	Cht #	Rate bbl/min	Volume bbl		Pressure psig		Comments
				Stage	Total	Tubing	Casing	
Pump Spacer 1	10/26/2012 08:46	5	2	7.5			937.0	INJECTION TEST - FRESH WATER
Shutdown	10/26/2012 08:51	6						ISIP @ 450 PSI
Pump Tail Cement	10/26/2012 09:05	8	1	8.8			440.0	50 SKS, 17.0 PPG, 0.99 YIELD, 3.77 GAL/SK
Pump Displacement	10/26/2012 09:11	9	1.5	4			690.0	FRESH WATER
Shutdown	10/26/2012 09:13	10						HESITATE 10 MINUTES
Pump Displacement	10/26/2012 09:23	11	0.5	0.5	4.5		380.0	SQUEEZE ON CEMENT
Shutdown	10/26/2012 09:24	12						HESITATE 20 MINUTES
Pump Displacement	10/26/2012 09:45	13	0.5	0.5	5		535.0	SQUEEZE ON CEMENT
Shutdown	10/26/2012 09:46	14						HESITATE 15 MINUTES
Pump Displacement	10/26/2012 10:00	15	0.5	0.5	5.5		838.0	SQUEEZE ON CEMENT
Shutdown	10/26/2012 10:01	16						HESITATE 15 MINUTES
Pump Displacement	10/26/2012 10:13	17	0.5	0.25	5.75		1063.0	SQUEEZE ON CEMENT
Shutdown	10/26/2012 10:14	18						HESITATE 10 MINUTES
Pump Displacement	10/26/2012 10:24	19	0.5	0.25	6		1215.0	SQUEEZE ON CEMENT
Shutdown	10/26/2012 10:25	20						HESITATE 5 MINUTES
Pump Displacement	10/26/2012 10:31	21	0.5	0.25	6.25		1543.0	SQUEEZE ON CEMENT
Shutdown	10/26/2012 10:32	22						PRESSURE HOLDING
Pump Displacement	10/26/2012 10:33	23	0.5	0.25	6.5		2025.0	SQUEEZE ON CEMENT
Shutdown	10/26/2012 10:34	24						CEMENT SQUEEZED OFF
Other	10/26/2012 10:35	25						RELEASE PRESSURE
Other	10/26/2012 10:36							STING OUT OF RETAINER - SWAP OVER TO RIG TO REVERSE OUT
Reverse Circ Well	10/26/2012 10:38	26						RIG REVERSE OUT - WASH UP PUMP
Activity Description	Date/Time	Cht	Rate bbl/min	Volume bbl		Pressure psig		Comments

		#		Stage	Total	Tubing	Casing	
Other	10/26/2012 11:00							SQUEEZE #2 -SET NEW RETAINER @ 1450' - 2ND SET OF PERFS @ 1500'
Pump Water	10/26/2012 12:27	29	1	0.5			260.0	FILL LINES
Pressure Test	10/26/2012 12:31	31						PRESSURED UP TO 4480 PSI - PRESSURE HELD WELL
Pump Spacer 1	10/26/2012 12:33	32	2.5	5			1214. 0	FRESH WATER
Pump Spacer	10/26/2012 12:38	33	2	15			1301. 0	SUPERFLUSH
Pump Spacer 1	10/26/2012 12:46	34	2	5			1032. 0	FRESH WATER
Pump Tail Cement	10/26/2012 12:52	35	1.5	13.2			790.0	75 SACKS, 17.0 PPG, 0.99 YIELD, 3.77 GAL/SK
Pump Displacement	10/26/2012 13:01	36	1.5	2.5			747.0	FRESH WATER
Shutdown	10/26/2012 13:02	37						HESITATE 15 MINUTES
Pump Displacement	10/26/2012 13:16	38	0.5	0.5	3		716.0	SQUEEZE ON CEMENT
Shutdown	10/26/2012 13:18	39						HESITATE 20 MINUTES
Pump Displacement	10/26/2012 13:37	40	0.5	0.25	3.25		830.0	SQUEEZE ON CEMENT
Shutdown	10/26/2012 13:38	41						HESITATE 20 MINUTES
Pump Displacement	10/26/2012 14:02	42	0.5	0.25	3.5		782.0	SQUEEZE ON CEMENT
Shutdown	10/26/2012 14:03	43						HESITATE 15 MINUTES
Pump Displacement	10/26/2012 14:16	44	0.5	0.25	3.75		775.0	SQUEEZE ON CEMENT
Shutdown	10/26/2012 14:17	45						HESITATE 10 MINUTES
Pump Displacement	10/26/2012 14:20							
Shutdown	10/26/2012 14:20							
Pump Displacement	10/26/2012 14:27	46	0.5	0.25	4		860.0	SQUEEZE ON CEMENT
Shutdown	10/26/2012 14:28	47						HESITATE 10 MINUTES
Pump Displacement	10/26/2012 14:38	48	0.5	0.25	4.25		924.0	SQUEEZE ON CEMENT
Shutdown	10/26/2012 14:39	49						HESITATE 10 MINUTES

Sold To #: 300721

Ship To #: 2925160

Quote #:

Sales Order #:

9879647

SUMMIT Version: 7.3.0045

Saturday, November 03, 2012 12:21:00

Activity Description	Date/Time	Cht #	Rate bbl/min	Volume bbl		Pressure psig		Comments
				Stage	Total	Tubing	Casing	
Pump Displacement	10/26/2012 14:49	50	0.5	0.25	4.5		1043.0	SQUEEZE ON CEMENT
Shutdown	10/26/2012 14:50	51						HESITATE
Pump Displacement	10/26/2012 15:00	52	0.5	0.1	4.6		1237.0	SQUEEZE ON CEMENT
Shutdown	10/26/2012 15:01	53						HESITATE
Pump Displacement	10/26/2012 15:07	54	0.5	0.1	4.7		1296.0	SQUEEZE ON CEMENT
Shutdown	10/26/2012 15:08	55						HESITATE
Pump Displacement	10/26/2012 15:16	56	0.5	0.1	4.8		1920.0	SQUEEZE ON CEMENT
Shutdown	10/26/2012 15:17	57						HESITATE
Pump Displacement	10/26/2012 15:21	58	0.5	0.1	4.9		2030.0	SQUEEZE ON CEMENT
Shutdown	10/26/2012 15:22	59						HESITATE - END JOB PER COMPANY REP - PAST TIME ON CEMENT SET PER LAB TESTS
Other	10/26/2012 15:24	60						STING OUT OF RETAINER - SWAP OVER TO RIG TO REVERSE OUT
Reverse Circ Well	10/26/2012 15:24							RIG REVERSE OUT - WASH UP PUMP
End Job	10/26/2012 15:25							NO SWAGE CHARGES - 6 ADD HOURS - 80 LBS SUGAR
Post-Job Safety Meeting (Pre Rig-Down)	10/26/2012 15:45							
Rig-Down Equipment	10/26/2012 16:00							
Pre-Convoy Safety Meeting	10/26/2012 16:45							
Crew Leave Location	10/26/2012 17:00							THANK YOU FOR USING HALLIBURTON AND ED DEUSSEN AND CREW

WPX - KP 533-18

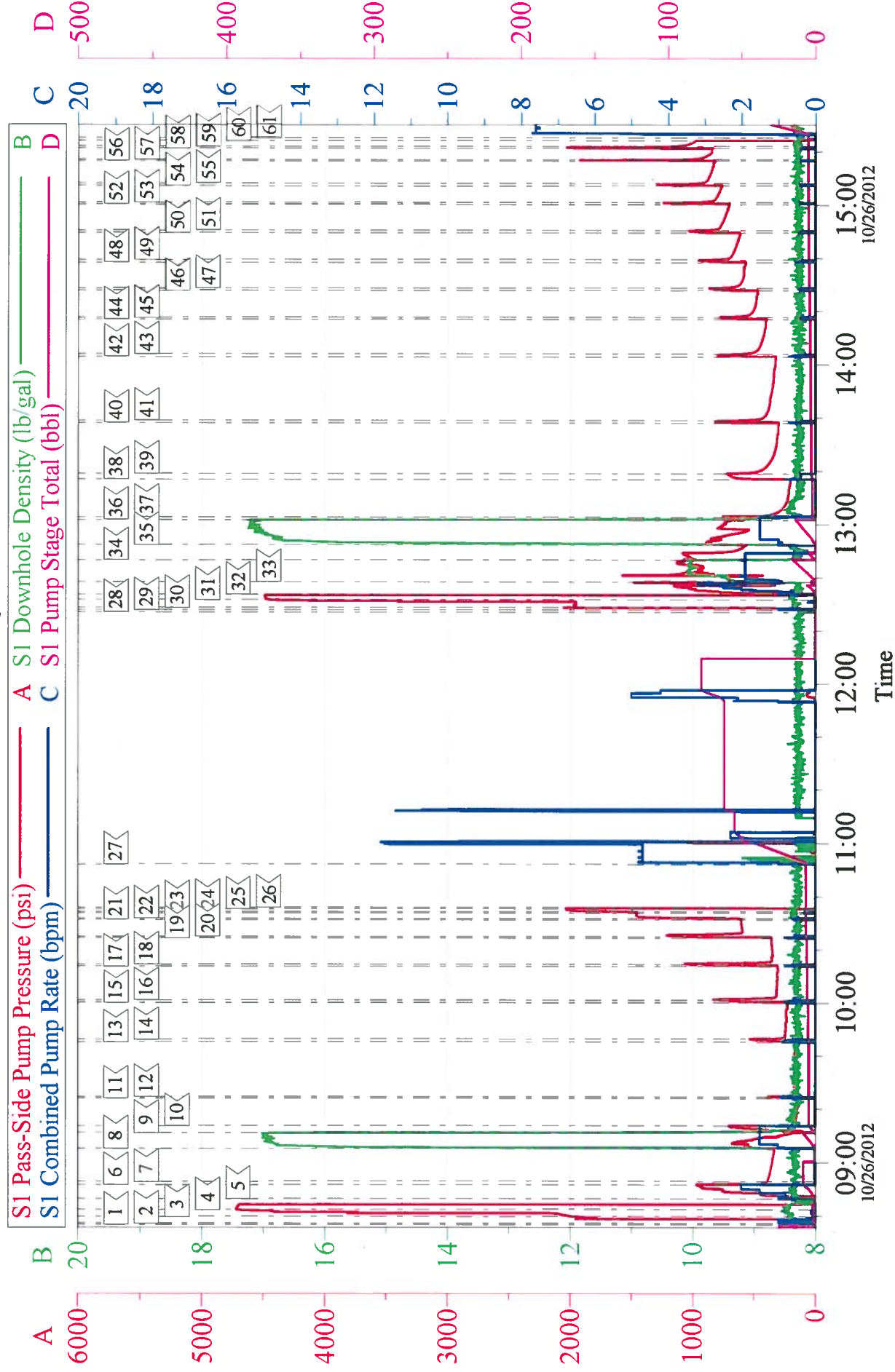
CIRCULATION SQUEEZE



Local Event Log									
1	2	3	4	5	6	7	8	9	10
1	2	3	4	5	6	7	8	9	10
11	12	13	14	15	16	17	18	19	20
21	22	23	24	25	26	27	28	29	30
31	32	33	34	35	36	37	38	39	40
41	42	43	44	45	46	47	48	49	50
51	52	53	54	55	56	57	58	59	60
61	62	63	64	65	66	67	68	69	70
71	72	73	74	75	76	77	78	79	80
81	82	83	84	85	86	87	88	89	90
91	92	93	94	95	96	97	98	99	100
101	102	103	104	105	106	107	108	109	110
111	112	113	114	115	116	117	118	119	120
121	122	123	124	125	126	127	128	129	130
131	132	133	134	135	136	137	138	139	140
141	142	143	144	145	146	147	148	149	150
151	152	153	154	155	156	157	158	159	160
161	162	163	164	165	166	167	168	169	170
171	172	173	174	175	176	177	178	179	180
181	182	183	184	185	186	187	188	189	190
191	192	193	194	195	196	197	198	199	200
201	202	203	204	205	206	207	208	209	210
211	212	213	214	215	216	217	218	219	220
221	222	223	224	225	226	227	228	229	230
231	232	233	234	235	236	237	238	239	240
241	242	243	244	245	246	247	248	249	250
251	252	253	254	255	256	257	258	259	260
261	262	263	264	265	266	267	268	269	270
271	272	273	274	275	276	277	278	279	280
281	282	283	284	285	286	287	288	289	290
291	292	293	294	295	296	297	298	299	300
301	302	303	304	305	306	307	308	309	310
311	312	313	314	315	316	317	318	319	320
321	322	323	324	325	326	327	328	329	330
331	332	333	334	335	336	337	338	339	340
341	342	343	344	345	346	347	348	349	350
351	352	353	354	355	356	357	358	359	360
361	362	363	364	365	366	367	368	369	370
371	372	373	374	375	376	377	378	379	380
381	382	383	384	385	386	387	388	389	390
391	392	393	394	395	396	397	398	399	400
401	402	403	404	405	406	407	408	409	410
411	412	413	414	415	416	417	418	419	420
421	422	423	424	425	426	427	428	429	430
431	432	433	434	435	436	437	438	439	440
441	442	443	444	445	446	447	448	449	450
451	452	453	454	455	456	457	458	459	460
461	462	463	464	465	466	467	468	469	470
471	472	473	474	475	476	477	478	479	480
481	482	483	484	485	486	487	488	489	490
491	492	493	494	495	496	497	498	499	500
501	502	503	504	505	506	507	508	509	510
511	512	513	514	515	516	517	518	519	520
521	522	523	524	525	526	527	528	529	530
531	532	533	534	535	536	537	538	539	540
541	542	543	544	545	546	547	548	549	550
551	552	553	554	555	556	557	558	559	560
561	562	563	564	565	566	567	568	569	570
571	572	573	574	575	576	577	578	579	580
581	582	583	584	585	586	587	588	589	590
591	592	593	594	595	596	597	598	599	600
601	602	603	604	605	606	607	608	609	610
611	612	613	614	615	616	617	618	619	620
621	622	623	624	625	626	627	628	629	630
631	632	633	634	635	636	637	638	639	640
641	642	643	644	645	646	647	648	649	650
651	652	653	654	655	656	657	658	659	660
661	662	663	664	665	666	667	668	669	670
671	672	673	674	675	676	677	678	679	680
681	682	683	684	685	686	687	688	689	690
691	692	693	694	695	696	697	698	699	700
701	702	703	704	705	706	707	708	709	710
711	712	713	714	715	716	717	718	719	720
721	722	723	724	725	726	727	728	729	730
731	732	733	734	735	736	737	738	739	740
741	742	743	744	745	746	747	748	749	750
751	752	753	754	755	756	757	758	759	760
761	762	763	764	765	766	767	768	769	770
771	772	773	774	775	776	777	778	779	780
781	782	783	784	785	786	787	788	789	790
791	792	793	794	795	796	797	798	799	800
801	802	803	804	805	806	807	808	809	810
811	812	813	814	815	816	817	818	819	820
821	822	823	824	825	826	827	828	829	830
831	832	833	834	835	836	837	838	839	840
841	842	843	844	845	846	847	848	849	850
851	852	853	854	855	856	857	858	859	860
861	862	863	864	865	866	867	868	869	870
871	872	873	874	875	876	877	878	879	880
881	882	883	884	885	886	887	888	889	890
891	892	893	894	895	896	897	898	899	900
901	902	903	904	905	906	907	908	909	910
911	912	913	914	915	916	917	918	919	920
921	922	923	924	925	926	927	928	929	930
931	932	933	934	935	936	937	938	939	940
941	942	943	944	945	946	947	948	949	950
951	952	953	954	955	956	957	958	959	960
961	962	963	964	965	966	967	968	969	970
971	972	973	974	975	976	977	978	979	980
981	982	983	984	985	986	987	988	989	990
991	992	993	994	995	996	997	998	999	1000
1001	1002	1003	1004	1005	1006	1007	1008	1009	1010
1011	1012	1013	1014	1015	1016	1017	1018	1019	1020
1021	1022	1023	1024	1025	1026	1027	1028	1029	1030
1031	1032	1033	1034	1035	1036	1037	1038	1039	1040
1041	1042	1043	1044	1045	1046	1047	1048	1049	1050
1051	1052	1053	1054	1055	1056	1057	1058	1059	1060
1061	1062	1063	1064	1065	1066	1067	1068	1069	1070
1071	1072	1073	1074	1075	1076	1077	1078	1079	1080
1081	1082	1083	1084	1085	1086	1087	1088	1089	1090
1091	1092	1093	1094	1095	1096	1097	1098	1099	1100
1101	1102	1103	1104	1105	1106	1107	1108	1109	1110
1111	1112	1113	1114	1115	1116	1117	1118	1119	1120
1121	1122	1123	1124	1125	1126	1127	1128	1129	1130
1131	1132	1133	1134	1135	1136	1137	1138	1139	1140
1141	1142	1143	1144	1145	1146	1147	1148	1149	1150
1151	1152	1153	1154	1155	1156	1157	1158	1159	1160
1161	1162	1163	1164	1165	1166	1167	1168	1169	1170
1171	1172	1173	1174	1175	1176	1177	1178	1179	1180
1181	1182	1183	1184	1185	1186	1187	1188	1189	1190
1191	1192	1193	1194	1195	1196	1197	1198	1199	1200
1201	1202	1203	1204	1205	1206	1207	1208	1209	1210
1211	1212	1213	1214	1215	1216	1217	1218	1219	1220
1221	1222	1223	1224	1225	1226	1227	1228	1229	1230
1231	1232	1233	1234	1235	1236	1237	1238	1239	1240
1241	1242	1243	1244	1245	1246	1247	1248	1249	1250
1251	1252	1253	1254	1255	1256	1257	1258	1259	1260
1261	1262	1263	1264	1265	1266	1267	1268	1269	1270
1271	1272	1273	1274	1275	1276	1277	1278	1279	1280
1281	1282	1283	1284	1285	1286	1287	1288	1289	1290
1291	1292	1293	1294	1295	1296	1297	1298	1299	1300
1301	1302	1303	1304	1305	1306	1307	1308	1309	1310
1311	1312	1313	1314	1315	1316	1317	1318	1319	1320
1321	1322	1323	1324	1325	1326	1327	1328	1329	1330
1331	1332	1333	1334	1335	1336	1337	1338	1339	1340
1341	1342	1343	1344	1345	1346	1347	1348	1349	135

WPX - KP 533-18

CIRCULATION SQUEEZE



Customer: WPX	Job Date: 26-Oct-2012	Sales Order #: 9879647
Well Description: KP 533-18	Job Type: SQUEEZE	ADC Used: YES
Company Rep: JEFF BRADY	Cement Supervisor: ED DEUSSEN	RED TIGER: ANDREW LINN

HALLIBURTON

Water Analysis Report

Company: WILLIAMS
Submitted by: ED DEUSSEN
Attention: J.TROUT
Lease: KP
Well #: 533-18

Date: 10/26/2012
Date Rec.: 10/26/2012
S.O.#: 9879647
Job Type: SQUEEZE

Specific Gravity	<i>MAX</i>	1
pH	<i>8</i>	7.5
Potassium (K)	<i>5000</i>	450 Mg / L
Calcium (Ca)	<i>500</i>	120 Mg / L
Iron (FE2)	<i>300</i>	0 Mg / L
Chlorides (Cl)	<i>3000</i>	0 Mg / L
Sulfates (SO ₄)	<i>1500</i>	<200 Mg / L
Temp	<i>40-80</i>	38 Deg
Total Dissolved Solids		20 Mg / L

Respectfully: ED DEUSSEN

Title: CEMENTING SUPERVISOR

Location: Grand Junction, CO

NOTICE:

This report is limited to the described sample tested. Any person using or relying on this report agrees that Halliburton shall not be liable for any loss or damage whether due to act or omission resulting from such report or its use.

Sales Order #: 9879647	Line Item: 10	Survey Conducted Date: 10/26/2012
Customer: WPX ENERGY ROCKY MOUNTAIN LLC-EBUS		Job Type (BOM): CMT SQUEEZE PERFORATIONS BOM
Customer Representative: JEFF BRADY		API / UWI: (leave blank if unknown) 05-045-20628
Well Name: KP		Well Number: 533-18
Well Type: Development Well	Well Country: United States of America	
H2S Present: No	Well State: Colorado	Well County: Garfield

Dear Customer,

We hope that you were satisfied with the service quality of this job performed by Halliburton. It is the aim of our management and service personnel to deliver equipment and service of a standard unmatched in the service sector of the energy industry.

Please take the time to let us know if our performance met with your satisfaction. Please be as critical as possible to ensure we constantly improve our service. Your comments are of great value to us and are intended for the exclusive use of Halliburton.

CUSTOMER SATISFACTION SURVEY

CATEGORY	CUSTOMER SATISFACTION RESPONSE	
Survey Conducted Date	The date the survey was conducted	10/26/2012
Survey Interviewer	The survey interviewer is the person who initiated the survey.	EDWARD DEUSSEN (HB57194)
Customer Participation	Did the customer participate in this survey? (Y/N)	Yes
Customer Representative	Enter the Customer representative name	JEFF BRADY
HSE	Was our HSE performance satisfactory? Circle Y or N	Yes
Equipment	Were you satisfied with our Equipment? Circle Y or N	Yes
Personnel	Were you satisfied with our people? Circle Y or N	Yes
Customer Comment	Customer's Comment	THANKS

CUSTOMER SIGNATURE

Sales Order #: 9879647	Line Item: 10	Survey Conducted Date: 10/26/2012
Customer: WPX ENERGY ROCKY MOUNTAIN LLC-EBUS		Job Type (BOM): CMT SQUEEZE PERFORATIONS BOM
Customer Representative: JEFF BRADY		API / UWI: (leave blank if unknown) 05-045-20628
Well Name: KP		Well Number: 533-18
Well Type: Development Well	Well Country: United States of America	
H2S Present: No	Well State: Colorado	Well County: Garfield

KEY PERFORMANCE INDICATORS

General

Survey Conducted Date The date the survey was conducted	10/26/2012
---	------------

Cementing KPI Survey

Type of Job Select the type of job. (Cementing or Non-Cementing)	0
Select the Maximum Deviation range for this Job What is the highest deviation for the job you just completed? This may not be the maximum well deviation.	Vertical
Total Operating Time (hours) Total Operating Hours Including Rig-up, Pumping, Rig-down. Enter in decimal format.	9
HSE Incident, Accident, Injury HSE Incident, Accident, Injury. This should be recordable incidents only.	No
Was the job purpose achieved? Was the job delivered correctly as per customer agreed design?	Yes
Operating Hours (Pumping Hours) Total number of hours pumping fluid on this job. Enter in decimal format.	7
Customer Non-Productive Rig Time (hrs) Lost time due to Halliburton in the start, execution, or completion of an ordered service or product, or delays in a follow-on service. Enter in decimal format. 0 if none.	0
Type of Rig Classification Job Was Performed Type Of Rig (classification) Job Was Performed On	Drilling Rig (Portable)
Number Of JSAs Performed Number Of Jsas Performed	5
Number of Unplanned Shutdowns Unplanned shutdown is when injection stops for any period of time.	0
Was this a Primary Cement Job (Yes / No)	No

Sales Order #: 9879647	Line Item: 10	Survey Conducted Date: 10/26/2012
Customer: WPX ENERGY ROCKY MOUNTAIN LLC-EBUS		Job Type (BOM): CMT SQUEEZE PERFORATIONS BOM
Customer Representative: JEFF BRADY		API / UWI: (leave blank if unknown) 05-045-20628
Well Name: KP		Well Number: 533-18
Well Type: Development Well	Well Country: United States of America	
H2S Present: No	Well State: Colorado	Well County: Garfield

Primary Cement Job= Casing job, Liner job, or Tie-back job.	
Was this a Plug or a Squeeze Job? Please select the appropriate choice	No
Was this a Primary or a Remedial Job? Kick off plug, Plug to Abandon, LCM plug or Planned Liner Top Squeeze, Squeeze of existing perforations, Squeeze of casing leak	No
Mixing Density of Job Stayed in Designed Density Range (0-100%) Density Range defined as +/- .20 ppg. Calculation: Total BBLs cement mixed at designed density divided by total BBLs of cement multiplied by 100	98
Was Automated Density Control Used? Was Automated Density Control (ADC) Used ?	Yes
Pump Rate (percent) of Job Stayed At Designed Pump Rate Pump Rate range defined as +/- 1 bbl/min. Calculation: Total BBLs of fluid pumped at the designed rate divided by Total BBLs of fluid pumped, multiplied by 100	99
Nbr of Remedial Sqz Jobs Rqd - Competition Number Of Remedial Squeeze Jobs Required After Primary Job Performed By Competition	0
Nbr of Remedial Plug Jobs Rqd - HES Number Of Remedial Plug Jobs Needed After Primary Plug Pumped By HES	0
Nbr of Remedial Sqz Jobs Rqd - HES Number Of Remedial Squeeze Jobs Required After Primary Job Performed By HES	0