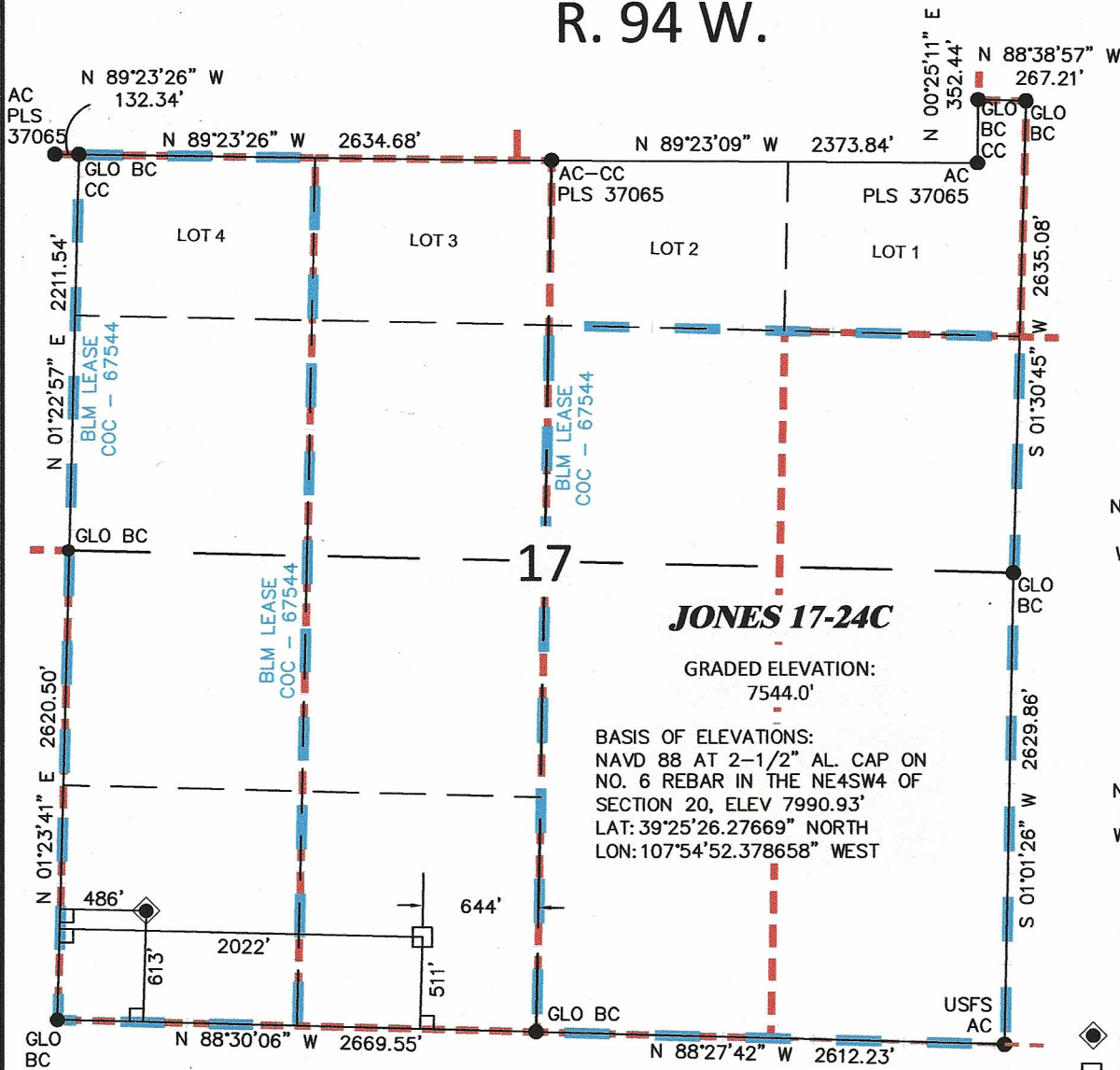


R. 94 W.



SCALE: 1"=1000'
0' 250' 500' 1000'

T. 7 S.

SURFACE HOLE LOCATION

SHL LATITUDE(NAD 83)
NORTH 39.433419 DEG.
SHL LONGITUDE(NAD 83)
WEST 107.917755 DEG.
SHL COLORADO CENTRAL
ZONE (NAD83)
NORTHING
1591839.38 FT.
EASTING
2317182.34 FT.

BOTTOM HOLE LOCATION

BHL LATITUDE(NAD 83)
NORTH 39.433143 DEG.
BHL LONGITUDE(NAD 83)
WEST 107.912317 DEG.
BHL COLORADO CENTRAL
ZONE (NAD83)
NORTHING
1591689 FT.
EASTING
2318715 FT.

LEGEND

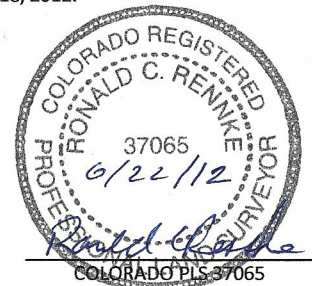
- SURFACE HOLE LOCATION
- BOTTOM HOLE LOCATION
- FOUND CORNER MONUMENT, AS NOTED
- LEASE LINE
- PROPERTY LINE

SURVEYOR'S STATEMENT

I, Ronald C. Renneke, an employee and agent for William H. Smith & Associates P.C., Inc. state the plat hereon is a representation of a field survey made under my authority of the shown JONES 17-24C surface hole location, being staked on the ground as shown hereon on June 18, 2012.

NOTES

- (1.) Basis of Datum is the Colorado State Plane Coordinate System, Central Zone, NAD83 (horizontal) & NAVD88 (vertical) derived from OPUS solution.
- (2.) The Basis of Bearings for this survey is referenced to the south line of the SW4 of Section 17 monumented with USGLO brass caps dated 1911 and bearing N 88°30'06" W.
- (3.) Current land use is native, non-crop & rangeland.
- (4.) Improvements exist within 400' radius, see exhibit 2 for details.
- (5.) GPS operator Ron Renneke, observed PDOP 1.6
- (6.) All GPS observations for the shown well location are in compliance with COGCC rule no. 215.



Notice: In accordance with Colorado State Law, any legal action based upon any defect in this survey plat must commence within three (3) years after first discovery of such defect. In no event may any action based upon any defect in this survey plat be commenced more than ten (10) years from the date of certification shown hereon.



WILLIAM H. SMITH & ASSOCIATES P.C.
SURVEYING CONSULTANTS
550 EAST SECOND NORTH PHONE: 307-875-3638
GREEN RIVER, WY 307-875-3639
www.whsmithpc.com

**PLAT OF DRILLING LOCATION
FOR NOBLE ENERGY, INC
JONES 17-24C - SW4SW4 SECTION 17
613' F/SL & 486' F/WL, SECTION 17
T. 7 S., R. 94 W., 6TH P.M.
GARFIELD COUNTY, COLORADO**

JOB NO: 2011900.004

REVISIONS:

DATE DRAWN - BY: 6/18/12 - rcr

SCALE: 1" = 1000'

EXHIBIT 1

PAGE 1 OF 1