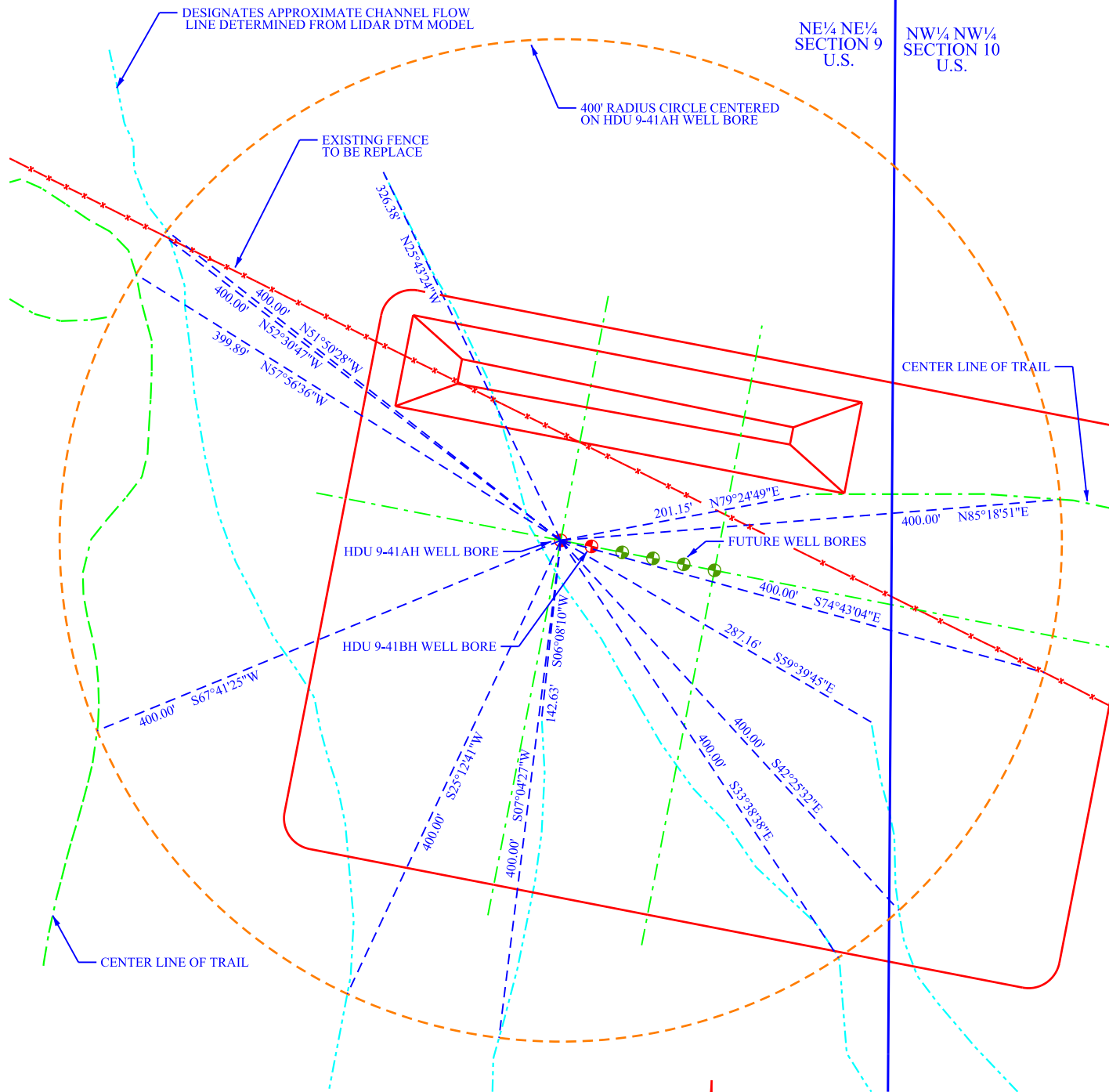


EXHIBIT I-B: VISIBLE IMPROVEMENTS PLAT T. 8 S., R. 98 W., 6TH P.M.



NOTE:
Surface use of site area is grazing. Vegetation consists predominantly of sagebrush, cedar, buckbrush and native grasses.

CERTIFICATE OF SURVEYOR

THIS IS TO CERTIFY THAT THIS SURVEY PLAT WAS MADE FROM NOTES TAKEN DURING A FIELD SURVEY MADE BY ME OR UNDER MY DIRECTION AND THAT IT CORRECTLY SHOWS THE LOCATION OF THE DRILLING SITE AS STAKED ON THE GROUND.

BASIS OF BEARINGS: PLANE PROJECTION
DATUM: NAD83 (CORS 96) (EPOCH 2002.0) @
NGS STATIONS "MC01", "MC07", & "MC08"
ORIGIN at SE CORNER, SECTION 16, T8S, R98W,
39°21'07.15853" N. SF = 1.0000
108°19'21.06044" W
HEIGHT = 5871' ELEV = 5925'

SCALE: 1" = 120'

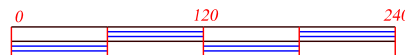


EXHIBIT I-B: VISIBLE IMPROVEMENTS PLAT
HOMER DEEP UNIT 9-41AH
LOCATED IN
NE 1/4 NE 1/4 OF SECTION 9
T. 8 S., R. 98 W., 6TH P.M.
GARFIELD COUNTY, COLORADO

OWNER:

BLACK HILLS PLATEAU
PRODUCTION COMPANY LLC
DENVER, COLORADO

FIELD SURVEY DATE
OCTOBER 13, 2012

SURVEYOR
AARON M. GROSCH

DRAWING DATE
NOVEMBER 19, 2012

PROJECT NO.
25A12

PREPARED BY:

PAUL A. REID, PLS
PROFESSIONAL LAND SURVEYOR
1533 PINION DRIVE
CHEYENNE, WYOMING 82001
(307) 637-3400 - FAX (307) 347-8589