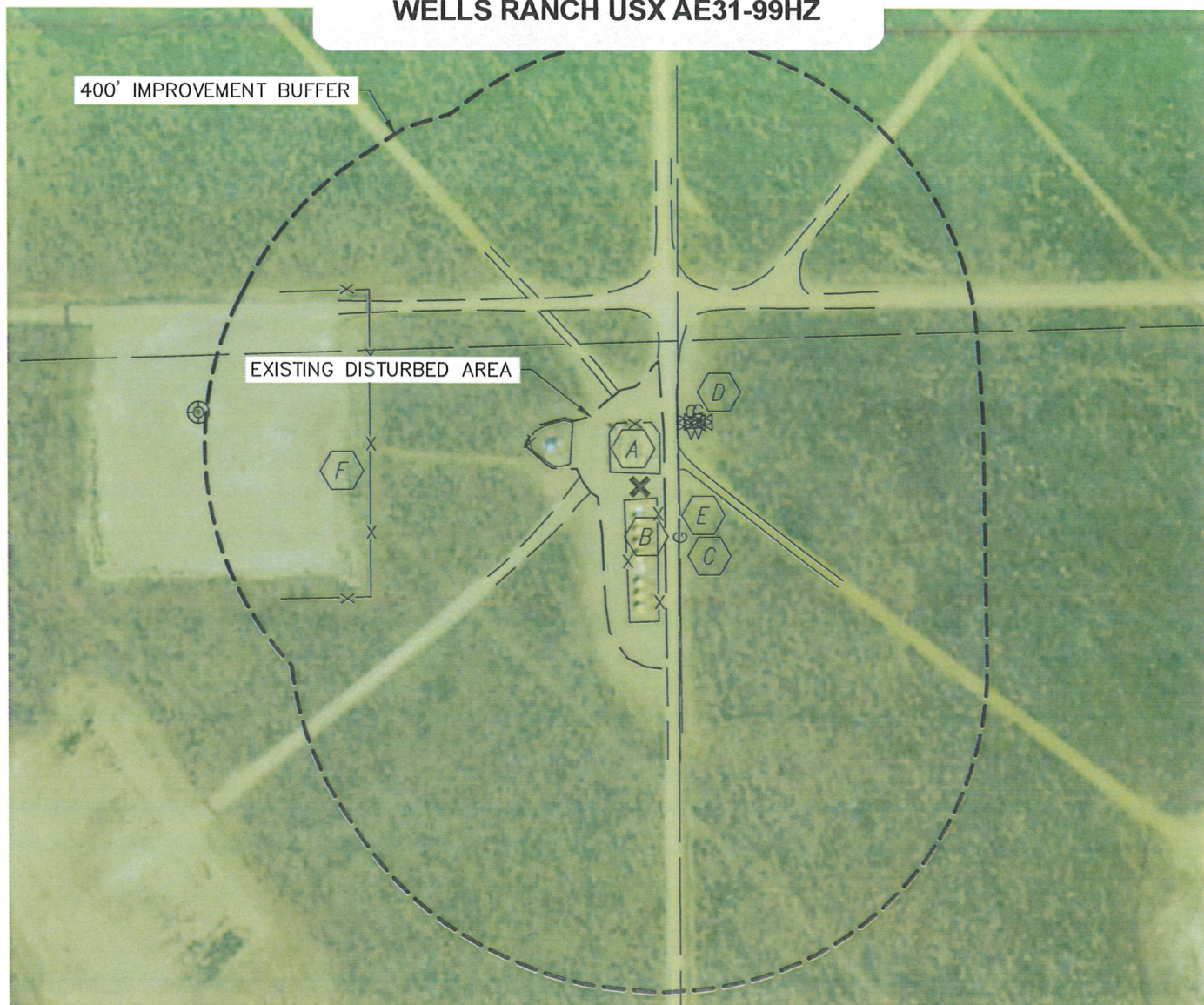


# PRODUCTION FACILITY AS-BUILT

SECTION: 31  
TOWNSHIP: 6N  
RANGE: 62W

## WELLS RANCH USX AE31-99HZ



### REFERENCE POINT LOCATION:

LAT: 40.44609°N  
LONG: 104.37118°W  
ELEV: 4696'  
PDOP: 2.2  
DATE: 11/7/2012  
OPERATOR: ADAM KELLY  
1/41/4: SW1/4NW1/4  
FNL: 1503'  
FWL: 1274'  
DISTANCE TO WELL: 559'  
ASSOCIATED NEW WELLS:  
NONE  
ASSOCIATED EXISTING WELLS:  
WELLS RANCH USX AE31-99HZ  
WELLS RANCH USX AE31-3P  
WELLS RANCH USX AE31-5P  
WELLS RANCH USX AE31-4  
WELLS RANCH USX AE31-6

### IMPROVEMENTS:

- A** EX. PRODUCTION EQUIPMENT (NOBLE) 16' N, 16' S, 91' NW
- B** EDGE OF DISTURBANCE 31' E, 67' W, 124' N, 224' S
- C** FIELD ROAD 31' E, 67' W, 58' NE, 124' NE. 332' NE, 221' N
- D** GAS VALVE 102' NE, 108' NE
- E** GAS LINE 49' E
- F** FENCE 337' W

### LEGEND

**X** - REFERENCE POINT  
ALL DISTANCES ARE APPROXIMATE.

NEAREST: BUILDING 5280'+,  
PUBLIC ROAD 5280'+, ABOVE GROUND UTILITY 5280'+,  
RAILROAD 5280'+, PROPERTY LINE 1274' W

