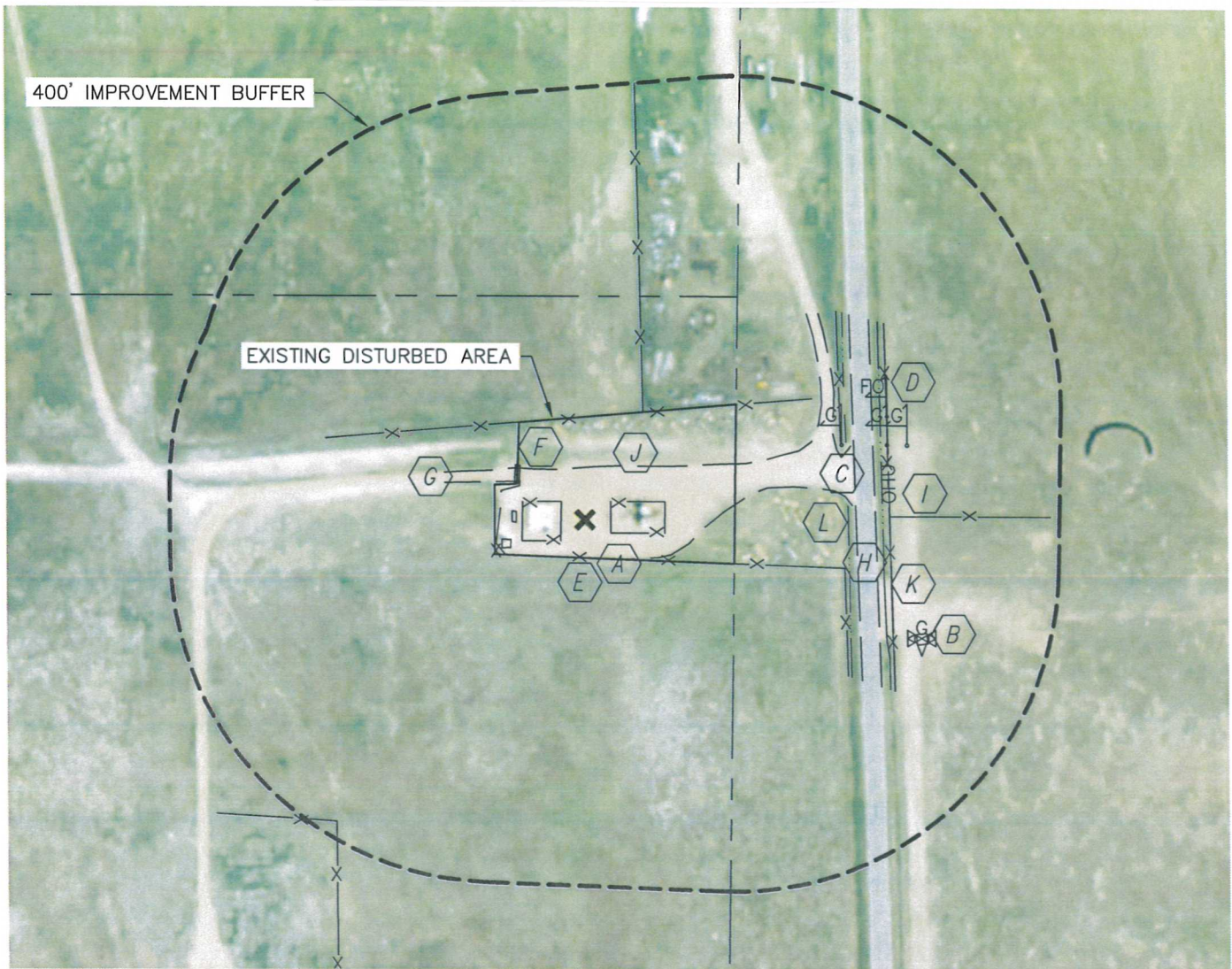


Lat40°, Inc. 1635 Foxtrail Drive, Suite 325 Loveland, CO 970-776-3321

PRODUCTION FACILITY AS-BUILT

MARICK 1061-6-41

SECTION: 6
TOWNSHIP: 10N
RANGE: 61W



REFERENCE POINT LOCATION:

LAT: 40.86294°N
LONG: 104.24020°W
ELEV: 5083'
PDOP: 2.6
DATE: 11/14/2012
OPERATOR: ADAM KELLY
1/41/4: NE1/4SE1/4
FSL: 2543'
FEL: 183'
DISTANCE TO WELL: 730'
ASSOCIATED NEW WELLS:
NONE
ASSOCIATED EXISTING WELLS:
MARICK 1061-6-41

IMPROVEMENTS:

- | | |
|---|--|
| A PRODUCTION EQUIPMENT (NOBLE)
30' & 85' W, 31' E, 95' SW | H CR 87 333' E |
| B GAS VALVE 438' SE | I OVERHEAD UTILITY 375' E |
| C GAS MARKER 329',
384' & 408' NE | J EDGE OF DISTURBANCE
46' S, 64' N, 106' W |
| D FIBER OPTIC MARKER 393' NE | K CULVERT 374' SE |
| E FENCE 47' S, 112' W, 125' N,
150' NE, 375' E, 480' SW | L BARROW DITCH 324' & 366' E |
| F CATTLE GUARD 93' NW | |
| G FIELD ROAD 100' NW, 306' NE | |

LEGEND

X - REFERENCE POINT
ALL DISTANCES ARE APPROXIMATE.

NEAREST: BUILDING (OUT-BUILDING) 1250' NE,
PUBLIC ROAD (CR 87) 333' E, ABOVE GROUND UTILITY 375' E,
RAILROAD (ABANDONED) 5130' NE, PROPERTY LINE 183' E

