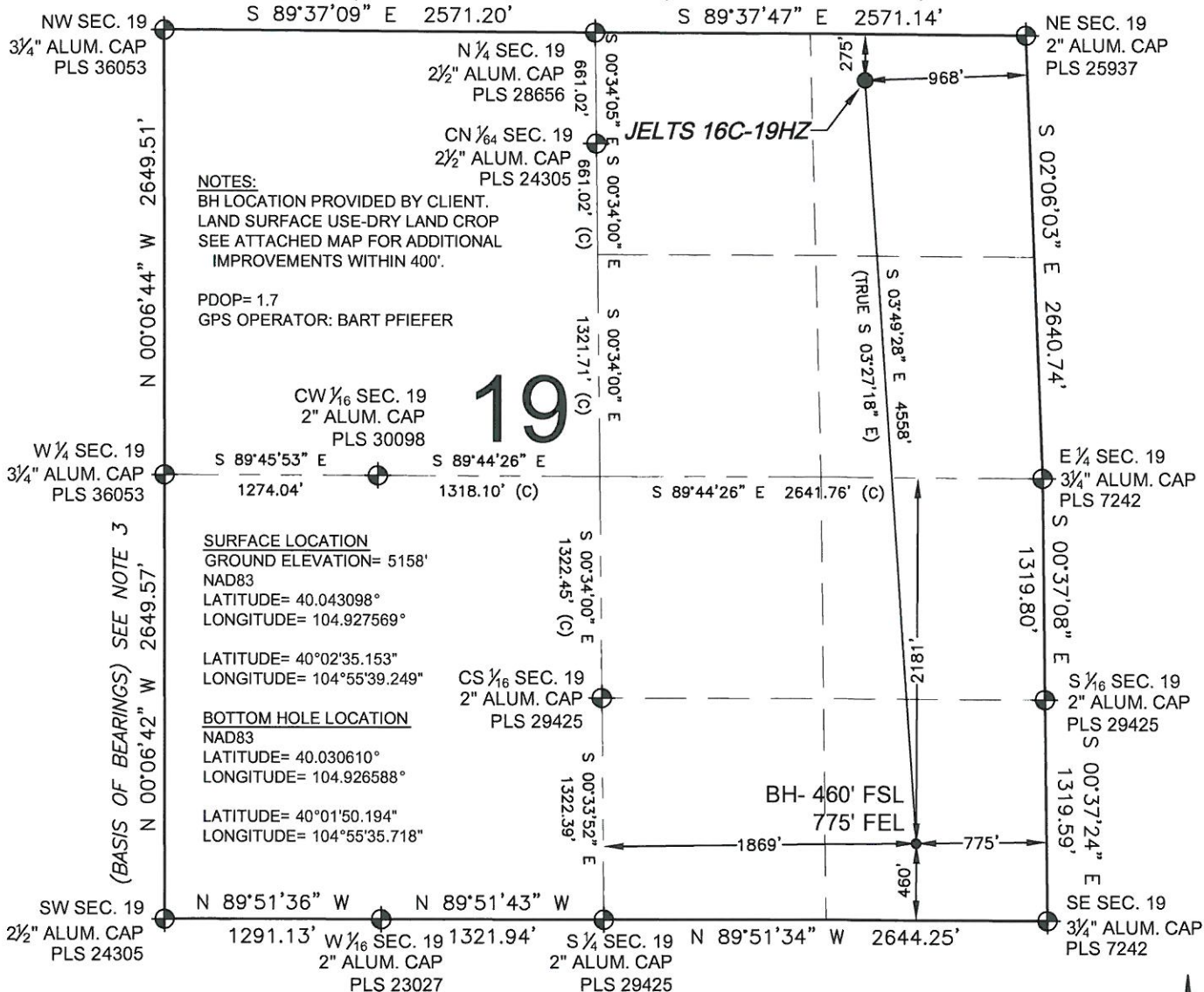


WELL LOCATION CERTIFICATE: JELTS 16C-19HZ

SECTION 19, TOWNSHIP 1 NORTH, RANGE 67 WEST, 6TH P.M.



NOTES:
BH LOCATION PROVIDED BY CLIENT.
LAND SURFACE USE-DRY LAND CROP
SEE ATTACHED MAP FOR ADDITIONAL IMPROVEMENTS WITHIN 400'.

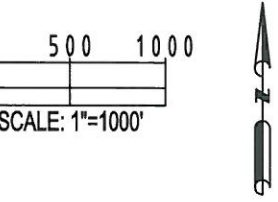
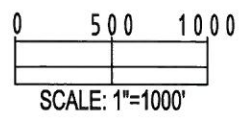
PDOP= 1.7
GPS OPERATOR: BART PFIEFER

SURFACE LOCATION
GROUND ELEVATION= 5158'
NAD83
LATITUDE= 40.043098°
LONGITUDE= 104.927569°

LATITUDE= 40°02'35.153"
LONGITUDE= 104°55'39.249"

BOTTOM HOLE LOCATION
NAD83
LATITUDE= 40.030610°
LONGITUDE= 104.926588°

LATITUDE= 40°01'50.194"
LONGITUDE= 104°55'35.718"



PREPARED BY: Petroleum Field Services, LLC 1801 W. 13th Ave. Denver, CO 80204	FIELD DATE: 10-24-12	SURFACE LOCATION: NE 1/4 NE 1/4, SEC. 19, T1N, R67W, 6TH P.M. WELD COUNTY, COLORADO
	DRAWING DATE: 10-31-12	BY: SMF CHECKED: MCH