

Anadarko Petroleum Corp.

Weld County, CO (NAD 83)

Sec. 19-T1N-R67W

Jelts 36N-19HZ

Plan B Rev 0

Plan: Plan B Rev 0 Permit

Sperry Drilling Services

Proposal Report

05 December, 2012

Well Coordinates: 1,259,069.73 N, 3,159,345.52 E (40° 02' 35.27" N, 104° 55' 51.09" W)

Ground Level: 5,148.00 ft

Local Coordinate Origin:

Centered on Well Jelts 36N-19HZ

Viewing Datum:

RKB=17 @ 5165.00ft (Drilling Rig)

TVDs to System:

N

North Reference:

True

Unit System:

API - US Survey Feet - Custom

Geodetic Scale Factor Applied

Version: 2003.16 Build: 431

HALLIBURTON

Project: Weld County, CO (NAD 83)
Site: Sec. 19-T1N-R67W
Well: Jelts 36N-19HZ
Wellbore: Plan B Rev 0
Design: Plan B Rev 0 Permit

Anadarko Petroleum Corp.

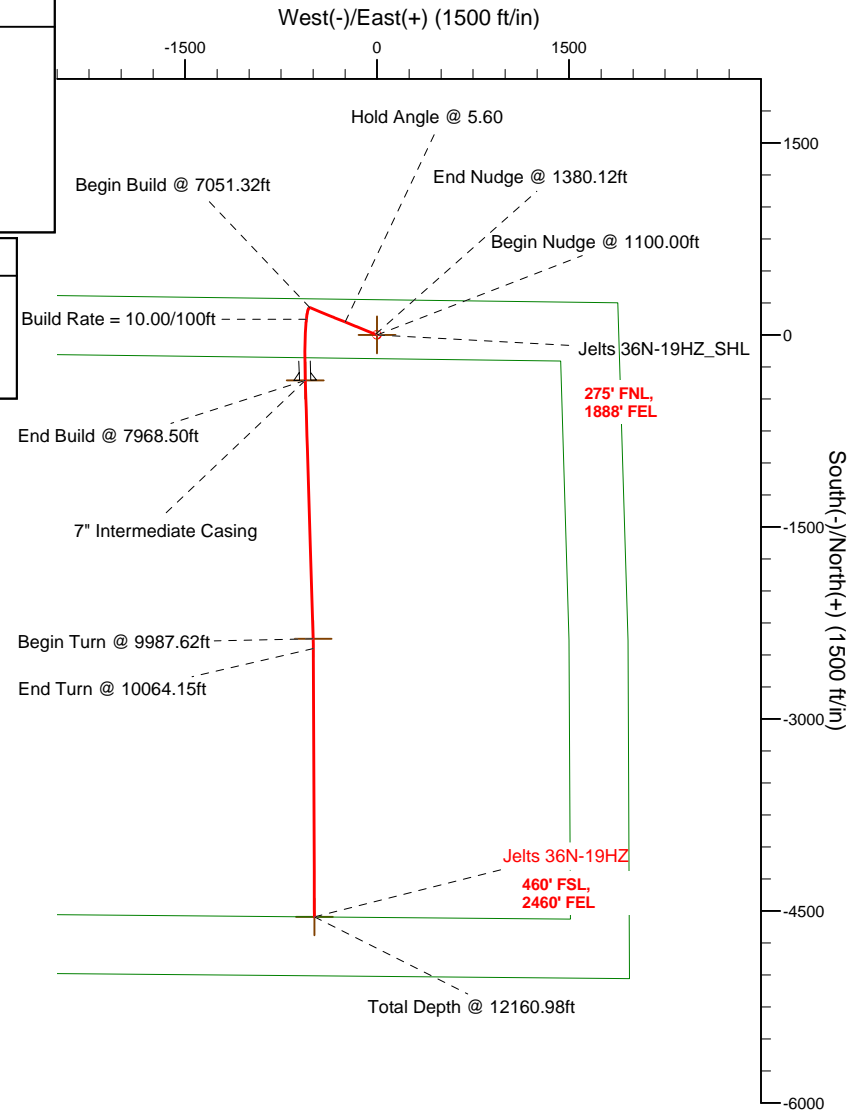
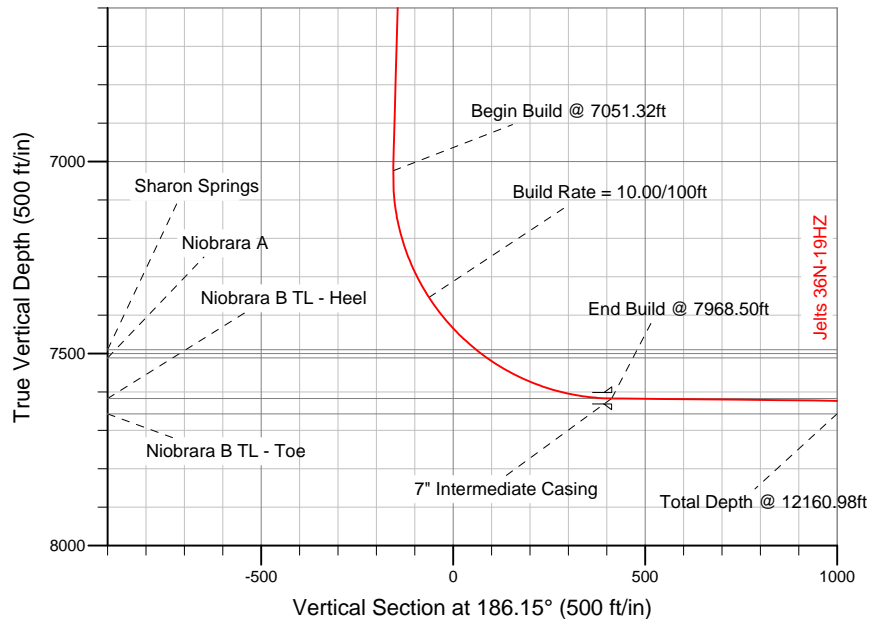
HALLIBURTON
Sperry Drilling

SECTION DETAILS

Sec	MD	Inc	Azi	TVD	+N/-S	+E/-W	DLeg	TFace	VSec	Target
1	0.00	0.00	0.00	0.00	0.00	0.00	0.00	0.00	0.00	
2	1100.00	0.00	0.00	1100.00	0.00	0.00	0.00	0.00	0.00	
3	1380.12	5.60	292.10	1379.67	5.15	-12.68	2.00	292.10	-3.76	
4	7051.32	5.60	292.10	7023.79	213.41	-525.66	0.00	0.00	-155.88	
5	7968.50	89.45	178.25	7617.00	-355.00	-561.00	10.00	-113.80	413.05	Jelts 36N-19HZ_CP
6	9987.62	89.45	178.25	7636.26	-2373.08	-499.24	0.00	0.00	2412.90	Jelts 36N-19HZ_TP
7	10064.15	89.45	179.78	7636.99	-2449.60	-497.92	2.00	90.02	2488.84	
8	12160.98	89.45	179.78	7657.00	-4546.32	-489.79	0.00	0.00	4572.62	Jelts 36N-19HZ_BHL

WELLBORE TARGET DETAILS (LAT/LONG)

Name	TVD	+N/-S	+E/-W	Latitude	Longitude	Shape
Jelts 36N-19HZ_SHL	0.00	0.00	0.00	40.043131	-104.930857	Point
Jelts 36N-19HZ_CP	7617.00	-355.00	-561.00	40.042156	-104.932861	Point
Jelts 36N-19HZ_TP	7636.26	-2373.08	-499.24	40.036617	-104.932640	Point
Jelts 36N-19HZ_BHL	7657.00	-4546.32	-489.79	40.030651	-104.932606	Point



WELL DETAILS: Jelts 36N-19HZ

Ground Level: 5148.00 RKB=17 @ 5165.00ft (Drilling Rig)

Plan: Plan B Rev 0 Permit (Jelts 36N-19HZ/Plan B Rev 0)

Created By: Fred Hartmann Date: 12/03/2012
Reviewed: Date:

Plan Report for Jelts 36N-19HZ - Plan B Rev 0 Permit

Measured Depth (ft)	Inclination (°)	Azimuth (°)	Vertical Depth (ft)	+N/-S (ft)	+E/-W (ft)	Vertical Section (ft)	Dogleg Rate (°/100ft)	Build Rate (°/100ft)	Turn Rate (°/100ft)	Toolface Azimuth (°)
0.00	0.00	0.00	0.00	0.00	0.00	0.00	0.00	0.00	0.00	0.00
Jelts 36N-19HZ_SHL										
100.00	0.00	0.00	100.00	0.00	0.00	0.00	0.00	0.00	0.00	0.00
200.00	0.00	0.00	200.00	0.00	0.00	0.00	0.00	0.00	0.00	0.00
300.00	0.00	0.00	300.00	0.00	0.00	0.00	0.00	0.00	0.00	0.00
400.00	0.00	0.00	400.00	0.00	0.00	0.00	0.00	0.00	0.00	0.00
500.00	0.00	0.00	500.00	0.00	0.00	0.00	0.00	0.00	0.00	0.00
600.00	0.00	0.00	600.00	0.00	0.00	0.00	0.00	0.00	0.00	0.00
700.00	0.00	0.00	700.00	0.00	0.00	0.00	0.00	0.00	0.00	0.00
800.00	0.00	0.00	800.00	0.00	0.00	0.00	0.00	0.00	0.00	0.00
900.00	0.00	0.00	900.00	0.00	0.00	0.00	0.00	0.00	0.00	0.00
1,000.00	0.00	0.00	1,000.00	0.00	0.00	0.00	0.00	0.00	0.00	0.00
1,100.00	0.00	0.00	1,100.00	0.00	0.00	0.00	0.00	0.00	0.00	0.00
Begin Nudge @ 1100.00ft										
1,200.00	2.00	292.10	1,199.98	0.66	-1.62	-0.48	2.00	2.00	0.00	292.10
1,300.00	4.00	292.10	1,299.84	2.63	-6.47	-1.92	2.00	2.00	0.00	0.00
1,380.12	5.60	292.10	1,379.67	5.15	-12.68	-3.76	2.00	2.00	0.00	0.00
End Nudge @ 1380.12ft										
1,400.00	5.60	292.10	1,399.46	5.88	-14.48	-4.29	0.00	0.00	0.00	0.00
1,500.00	5.60	292.10	1,498.98	9.55	-23.52	-6.98	0.00	0.00	0.00	0.00
1,600.00	5.60	292.10	1,598.50	13.22	-32.57	-9.66	0.00	0.00	0.00	0.00
1,700.00	5.60	292.10	1,698.03	16.89	-41.61	-12.34	0.00	0.00	0.00	0.00
1,800.00	5.60	292.10	1,797.55	20.57	-50.66	-15.02	0.00	0.00	0.00	0.00
1,900.00	5.60	292.10	1,897.07	24.24	-59.70	-17.71	0.00	0.00	0.00	0.00
2,000.00	5.60	292.10	1,996.59	27.91	-68.75	-20.39	0.00	0.00	0.00	0.00
2,100.00	5.60	292.10	2,096.12	31.58	-77.79	-23.07	0.00	0.00	0.00	0.00
2,200.00	5.60	292.10	2,195.64	35.26	-86.84	-25.75	0.00	0.00	0.00	0.00
2,300.00	5.60	292.10	2,295.16	38.93	-95.88	-28.43	0.00	0.00	0.00	0.00
2,400.00	5.60	292.10	2,394.68	42.60	-104.93	-31.12	0.00	0.00	0.00	0.00
2,500.00	5.60	292.10	2,494.20	46.27	-113.98	-33.80	0.00	0.00	0.00	0.00
2,600.00	5.60	292.10	2,593.73	49.95	-123.02	-36.48	0.00	0.00	0.00	0.00
2,700.00	5.60	292.10	2,693.25	53.62	-132.07	-39.16	0.00	0.00	0.00	0.00
2,800.00	5.60	292.10	2,792.77	57.29	-141.11	-41.85	0.00	0.00	0.00	0.00
2,900.00	5.60	292.10	2,892.29	60.96	-150.16	-44.53	0.00	0.00	0.00	0.00
3,000.00	5.60	292.10	2,991.82	64.64	-159.20	-47.21	0.00	0.00	0.00	0.00
3,100.00	5.60	292.10	3,091.34	68.31	-168.25	-49.89	0.00	0.00	0.00	0.00
3,200.00	5.60	292.10	3,190.86	71.98	-177.29	-52.58	0.00	0.00	0.00	0.00
3,300.00	5.60	292.10	3,290.38	75.65	-186.34	-55.26	0.00	0.00	0.00	0.00
3,400.00	5.60	292.10	3,389.91	79.32	-195.38	-57.94	0.00	0.00	0.00	0.00
3,500.00	5.60	292.10	3,489.43	83.00	-204.43	-60.62	0.00	0.00	0.00	0.00
3,600.00	5.60	292.10	3,588.95	86.67	-213.47	-63.31	0.00	0.00	0.00	0.00
3,700.00	5.60	292.10	3,688.47	90.34	-222.52	-65.99	0.00	0.00	0.00	0.00
3,800.00	5.60	292.10	3,788.00	94.01	-231.56	-68.67	0.00	0.00	0.00	0.00
3,900.00	5.60	292.10	3,887.52	97.69	-240.61	-71.35	0.00	0.00	0.00	0.00
4,000.00	5.60	292.10	3,987.04	101.36	-249.66	-74.03	0.00	0.00	0.00	0.00
Hold Angle @ 5.60										
4,100.00	5.60	292.10	4,086.56	105.03	-258.70	-76.72	0.00	0.00	0.00	0.00
4,200.00	5.60	292.10	4,186.08	108.70	-267.75	-79.40	0.00	0.00	0.00	0.00
4,300.00	5.60	292.10	4,285.61	112.38	-276.79	-82.08	0.00	0.00	0.00	0.00
4,400.00	5.60	292.10	4,385.13	116.05	-285.84	-84.76	0.00	0.00	0.00	0.00
4,500.00	5.60	292.10	4,484.65	119.72	-294.88	-87.45	0.00	0.00	0.00	0.00
4,600.00	5.60	292.10	4,584.17	123.39	-303.93	-90.13	0.00	0.00	0.00	0.00
4,700.00	5.60	292.10	4,683.70	127.07	-312.97	-92.81	0.00	0.00	0.00	0.00
4,800.00	5.60	292.10	4,783.22	130.74	-322.02	-95.49	0.00	0.00	0.00	0.00
4,900.00	5.60	292.10	4,882.74	134.41	-331.06	-98.18	0.00	0.00	0.00	0.00
4,932.41	5.60	292.10	4,915.00	135.60	-333.99	-99.05	0.00	0.00	0.00	0.00
Sussex										
5,000.00	5.60	292.10	4,982.26	138.08	-340.11	-100.86	0.00	0.00	0.00	0.00

Plan Report for Jelts 36N-19HZ - Plan B Rev 0 Permit

Measured Depth (ft)	Inclination (°)	Azimuth (°)	Vertical Depth (ft)	+N-S (ft)	+E-W (ft)	Vertical Section (ft)	Dogleg Rate (°/100ft)	Build Rate (°/100ft)	Turn Rate (°/100ft)	Toolface Azimuth (°)
5,100.00	5.60	292.10	5,081.79	141.76	-349.15	-103.54	0.00	0.00	0.00	0.00
5,200.00	5.60	292.10	5,181.31	145.43	-358.20	-106.22	0.00	0.00	0.00	0.00
5,300.00	5.60	292.10	5,280.83	149.10	-367.24	-108.91	0.00	0.00	0.00	0.00
5,400.00	5.60	292.10	5,380.35	152.77	-376.29	-111.59	0.00	0.00	0.00	0.00
5,500.00	5.60	292.10	5,479.87	156.44	-385.33	-114.27	0.00	0.00	0.00	0.00
5,600.00	5.60	292.10	5,579.40	160.12	-394.38	-116.95	0.00	0.00	0.00	0.00
5,700.00	5.60	292.10	5,678.92	163.79	-403.43	-119.63	0.00	0.00	0.00	0.00
5,800.00	5.60	292.10	5,778.44	167.46	-412.47	-122.32	0.00	0.00	0.00	0.00
5,900.00	5.60	292.10	5,877.96	171.13	-421.52	-125.00	0.00	0.00	0.00	0.00
6,000.00	5.60	292.10	5,977.49	174.81	-430.56	-127.68	0.00	0.00	0.00	0.00
6,100.00	5.60	292.10	6,077.01	178.48	-439.61	-130.36	0.00	0.00	0.00	0.00
6,200.00	5.60	292.10	6,176.53	182.15	-448.65	-133.05	0.00	0.00	0.00	0.00
6,300.00	5.60	292.10	6,276.05	185.82	-457.70	-135.73	0.00	0.00	0.00	0.00
6,400.00	5.60	292.10	6,375.58	189.50	-466.74	-138.41	0.00	0.00	0.00	0.00
6,500.00	5.60	292.10	6,475.10	193.17	-475.79	-141.09	0.00	0.00	0.00	0.00
6,600.00	5.60	292.10	6,574.62	196.84	-484.83	-143.78	0.00	0.00	0.00	0.00
6,700.00	5.60	292.10	6,674.14	200.51	-493.88	-146.46	0.00	0.00	0.00	0.00
6,800.00	5.60	292.10	6,773.67	204.19	-502.92	-149.14	0.00	0.00	0.00	0.00
6,900.00	5.60	292.10	6,873.19	207.86	-511.97	-151.82	0.00	0.00	0.00	0.00
7,000.00	5.60	292.10	6,972.71	211.53	-521.01	-154.51	0.00	0.00	0.00	0.00
7,051.32	5.60	292.10	7,023.78	213.41	-525.66	-155.88	0.00	0.00	0.00	0.00
Begin Build @ 7051.32ft										
7,100.00	5.75	241.24	7,072.26	213.14	-530.00	-155.14	10.00	0.29	-104.47	-113.80
7,200.00	13.59	199.98	7,170.86	199.65	-538.42	-140.83	10.00	7.84	-41.26	-63.16
7,300.00	23.14	190.31	7,265.67	169.20	-545.97	-109.75	10.00	9.56	-9.67	-22.35
7,400.00	32.96	186.15	7,353.83	122.70	-552.42	-62.83	10.00	9.81	-4.16	-13.14
Build Rate = 10.00/100ft										
7,500.00	42.85	183.75	7,432.64	61.57	-557.56	-1.50	10.00	9.89	-2.40	-9.45
7,584.23	51.21	182.33	7,490.00	0.08	-560.78	59.98	10.00	9.92	-1.68	-7.55
Sharon Springs										
7,600.00	52.78	182.10	7,499.71	-12.33	-561.26	72.38	10.00	9.94	-1.44	-6.58
7,619.08	54.67	181.84	7,511.00	-27.71	-561.79	87.72	10.00	9.94	-1.37	-6.44
Niobrara A										
7,700.00	62.72	180.85	7,553.01	-96.77	-563.38	156.56	10.00	9.95	-1.23	-6.29
7,800.00	72.67	179.80	7,590.92	-189.17	-563.88	248.48	10.00	9.95	-1.05	-5.77
7,900.00	82.63	178.86	7,612.27	-286.72	-562.72	345.35	10.00	9.96	-0.94	-5.37
7,968.50	89.45	178.25	7,617.00	-355.00	-561.00	413.05	10.00	9.96	-0.90	-5.17
End Build @ 7968.50ft - Niobrara B TL - Heel - 7" Intermediate Casing - Jelts 36N-19HZ_CP										
8,000.00	89.45	178.25	7,617.30	-386.48	-560.04	444.24	0.00	0.00	0.00	-5.12
8,100.00	89.45	178.25	7,618.25	-486.43	-556.98	543.29	0.00	0.00	0.00	0.00
8,200.00	89.45	178.25	7,619.21	-586.38	-553.92	642.34	0.00	0.00	0.00	0.00
8,300.00	89.45	178.25	7,620.16	-686.33	-550.86	741.38	0.00	0.00	0.00	0.00
8,400.00	89.45	178.25	7,621.12	-786.28	-547.80	840.43	0.00	0.00	0.00	0.00
8,500.00	89.45	178.25	7,622.07	-886.22	-544.74	939.47	0.00	0.00	0.00	0.00
8,600.00	89.45	178.25	7,623.02	-986.17	-541.68	1,038.52	0.00	0.00	0.00	0.00
8,700.00	89.45	178.25	7,623.98	-1,086.12	-538.62	1,137.57	0.00	0.00	0.00	0.00
8,800.00	89.45	178.25	7,624.93	-1,186.07	-535.57	1,236.61	0.00	0.00	0.00	0.00
8,900.00	89.45	178.25	7,625.89	-1,286.02	-532.51	1,335.66	0.00	0.00	0.00	0.00
9,000.00	89.45	178.25	7,626.84	-1,385.97	-529.45	1,434.70	0.00	0.00	0.00	0.00
9,100.00	89.45	178.25	7,627.79	-1,485.92	-526.39	1,533.75	0.00	0.00	0.00	0.00
9,200.00	89.45	178.25	7,628.75	-1,585.86	-523.33	1,632.80	0.00	0.00	0.00	0.00
9,300.00	89.45	178.25	7,629.70	-1,685.81	-520.27	1,731.84	0.00	0.00	0.00	0.00
9,400.00	89.45	178.25	7,630.65	-1,785.76	-517.21	1,830.89	0.00	0.00	0.00	0.00
9,500.00	89.45	178.25	7,631.61	-1,885.71	-514.15	1,929.93	0.00	0.00	0.00	0.00
9,600.00	89.45	178.25	7,632.56	-1,985.66	-511.09	2,028.98	0.00	0.00	0.00	0.00
9,700.00	89.45	178.25	7,633.52	-2,085.61	-508.04	2,128.03	0.00	0.00	0.00	0.00
9,800.00	89.45	178.25	7,634.47	-2,185.56	-504.98	2,227.07	0.00	0.00	0.00	0.00
9,900.00	89.45	178.25	7,635.42	-2,285.51	-501.92	2,326.12	0.00	0.00	0.00	0.00
9,987.62	89.45	178.25	7,636.26	-2,373.08	-499.24	2,412.90	0.00	0.00	0.00	0.00

Plan Report for Jelts 36N-19HZ - Plan B Rev 0 Permit

Measured Depth (ft)	Inclination (°)	Azimuth (°)	Vertical Depth (ft)	+N/-S (ft)	+E/-W (ft)	Vertical Section (ft)	Dogleg Rate (°/100ft)	Build Rate (°/100ft)	Turn Rate (°/100ft)	Toolface Azimuth (°)
Begin Turn @ 9987.62ft - Jelts 36N-19HZ_TP										
10,000.00	89.45	178.49	7,636.38	-2,385.45	-498.89	2,425.17	2.00	0.00	2.00	90.02
10,064.15	89.45	179.78	7,636.99	-2,449.59	-497.92	2,488.83	2.00	0.00	2.00	90.01
End Turn @ 10064.15ft										
10,100.00	89.45	179.78	7,637.33	-2,485.44	-497.78	2,524.46	0.00	0.00	0.00	90.00
10,200.00	89.45	179.78	7,638.29	-2,585.44	-497.39	2,623.84	0.00	0.00	0.00	0.00
10,300.00	89.45	179.78	7,639.24	-2,685.43	-497.00	2,723.22	0.00	0.00	0.00	0.00
10,400.00	89.45	179.78	7,640.20	-2,785.43	-496.62	2,822.59	0.00	0.00	0.00	0.00
10,500.00	89.45	179.78	7,641.15	-2,885.42	-496.23	2,921.97	0.00	0.00	0.00	0.00
10,600.00	89.45	179.78	7,642.10	-2,985.41	-495.84	3,021.35	0.00	0.00	0.00	0.00
10,700.00	89.45	179.78	7,643.06	-3,085.41	-495.45	3,120.73	0.00	0.00	0.00	0.00
10,800.00	89.45	179.78	7,644.01	-3,185.40	-495.06	3,220.11	0.00	0.00	0.00	0.00
10,900.00	89.45	179.78	7,644.97	-3,285.40	-494.68	3,319.48	0.00	0.00	0.00	0.00
11,000.00	89.45	179.78	7,645.92	-3,385.39	-494.29	3,418.86	0.00	0.00	0.00	0.00
11,100.00	89.45	179.78	7,646.88	-3,485.39	-493.90	3,518.24	0.00	0.00	0.00	0.00
11,200.00	89.45	179.78	7,647.83	-3,585.38	-493.51	3,617.62	0.00	0.00	0.00	0.00
11,300.00	89.45	179.78	7,648.78	-3,685.38	-493.13	3,717.00	0.00	0.00	0.00	0.00
11,400.00	89.45	179.78	7,649.74	-3,785.37	-492.74	3,816.37	0.00	0.00	0.00	0.00
11,500.00	89.45	179.78	7,650.69	-3,885.37	-492.35	3,915.75	0.00	0.00	0.00	0.00
11,600.00	89.45	179.78	7,651.65	-3,985.36	-491.96	4,015.13	0.00	0.00	0.00	0.00
11,700.00	89.45	179.78	7,652.60	-4,085.36	-491.57	4,114.51	0.00	0.00	0.00	0.00
11,800.00	89.45	179.78	7,653.56	-4,185.35	-491.19	4,213.88	0.00	0.00	0.00	0.00
11,900.00	89.45	179.78	7,654.51	-4,285.35	-490.80	4,313.26	0.00	0.00	0.00	0.00
12,000.00	89.45	179.78	7,655.46	-4,385.34	-490.41	4,412.64	0.00	0.00	0.00	0.00
12,100.00	89.45	179.78	7,656.42	-4,485.34	-490.02	4,512.02	0.00	0.00	0.00	0.00
12,160.98	89.45	179.78	7,657.00	-4,546.31	-489.79	4,572.62	0.00	0.00	0.00	0.00
Total Depth @ 12160.98ft - Jelts 36N-19HZ_BHL										

Plan Annotations

Measured Depth (ft)	Vertical Depth (ft)	Local Coordinates		Comment
		+N/-S (ft)	+E/-W (ft)	
1,100.00	1,100.00	0.00	0.00	Begin Nudge @ 1100.00ft
1,380.12	1,379.67	5.15	-12.68	End Nudge @ 1380.12ft
4,000.00	3,987.04	101.36	-249.66	Hold Angle @ 5.60
7,051.32	7,023.78	213.41	-525.66	Begin Build @ 7051.32ft
7,400.00	7,353.83	122.70	-552.42	Build Rate = 10.00/100ft
7,968.50	7,617.00	-355.00	-561.00	End Build @ 7968.50ft
9,987.62	7,636.26	-2,373.08	-499.24	Begin Turn @ 9987.62ft
10,064.15	7,636.99	-2,449.59	-497.92	End Turn @ 10064.15ft
12,160.98	7,657.00	-4,546.31	-489.79	Total Depth @ 12160.98ft

Vertical Section Information

Angle Type	Target	Azimuth (°)	Origin Type	+N/-S (ft)	+E/-W (ft)	Start TVD (ft)
Target	Jelts 36N-19HZ_BHL	186.15	Slot	0.00	0.00	7,657.00

Survey tool program

From (ft)	To (ft)	Survey/Plan	Survey Tool
0.00	12,160.98	Plan B Rev 0 Permit	MWD

Plan Report for Jelts 36N-19HZ - Plan B Rev 0 Permit**Casing Details**

Measured Depth (ft)	Vertical Depth (ft)	Name	Casing Diameter (")	Hole Diameter (")
7,968.50	7,617.00	7" Intermediate Casing	7	8-3/4

Formation Details

Measured Depth (ft)	Vertical Depth (ft)	Name	Lithology	Dip (°)	Dip Direction (°)
4,932.41	4,915.00	Sussex		0.00	
7,584.23	7,490.00	Sharon Springs		0.00	
7,619.08	7,511.00	Niobrara A		0.00	
7,968.50	7,617.00	Niobrara B TL - Heel		0.00	
12,160.98	7,657.00	Niobrara B TL - Toe		0.00	

Targets associated with this wellbore

Target Name	TVD (ft)	+N/-S (ft)	+E/-W (ft)	Shape
Jelts 36N-19HZ_SHL	0.00	0.00	0.00	Point
Jelts 36N-19HZ_BHL	7,657.00	-4,546.32	-489.79	Point
Jelts 36N-19HZ_CP	7,617.00	-355.00	-561.00	Point
Jelts 36N-19HZ_TP	7,636.26	-2,373.08	-499.24	Point

North Reference Sheet for Sec. 19-T1N-R67W - Jelts 36N-19HZ - Plan B Rev 0

All data is in US Feet unless otherwise stated. Directions and Coordinates are relative to True North Reference.

Vertical Depths are relative to RKB=17 @ 5165.00ft (Drilling Rig). Northing and Easting are relative to Jelts 36N-19HZ

Coordinate System is US State Plane 1983, Colorado Northern Zone using datum North American Datum 1983, ellipsoid GRS 1980

Projection method is Lambert Conformal Conic (2 parallel)

Central Meridian is -105.50°, Longitude Origin:0.000000°, Latitude Origin:40.783333°

False Easting: 3,000,000.00ft, False Northing: 1,000,000.00ft, Scale Reduction: 0.99996338

Grid Coordinates of Well: 1,259,069.73 ft N, 3,159,345.52 ft E

Geographical Coordinates of Well: 40° 02' 35.27" N, 104° 55' 51.09" W

Grid Convergence at Surface is: 0.37°

Based upon Minimum Curvature type calculations, at a Measured Depth of 12,160.98ft
the Bottom Hole Displacement is 4,572.62ft in the Direction of 186.15° (True).

Magnetic Convergence at surface is: -8.40° (5 December 2012, , BGGM2012)

