

Anadarko Petroleum Corp.

Weld County, CO (NAD 83)

Sec. 19-T1N-R67W

Jelts 15C-19HZ

Plan B Rev 0

Plan: Plan B Rev 0 Permit

Sperry Drilling Services

Proposal Report

05 December, 2012

Well Coordinates: 1,259,069.56 N, 3,159,375.76 E (40° 02' 35.27" N, 104° 55' 50.70" W)

Ground Level: 5,148.00 ft

Local Coordinate Origin:

Centered on Well Jelts 15C-19HZ

Viewing Datum:

RKB=17 @ 5165.00ft (Drilling Rig)

TVDs to System:

N

North Reference:

True

Unit System:

API - US Survey Feet - Custom

Geodetic Scale Factor Applied

Version: 2003.16 Build: 431

HALLIBURTON

Project: Weld County, CO (NAD 83)
Site: Sec. 19-T1N-R67W
Well: Jelts 15C-19HZ
Wellbore: Plan B Rev 0
Design: Plan B Rev 0 Permit

Anadarko Petroleum Corp.

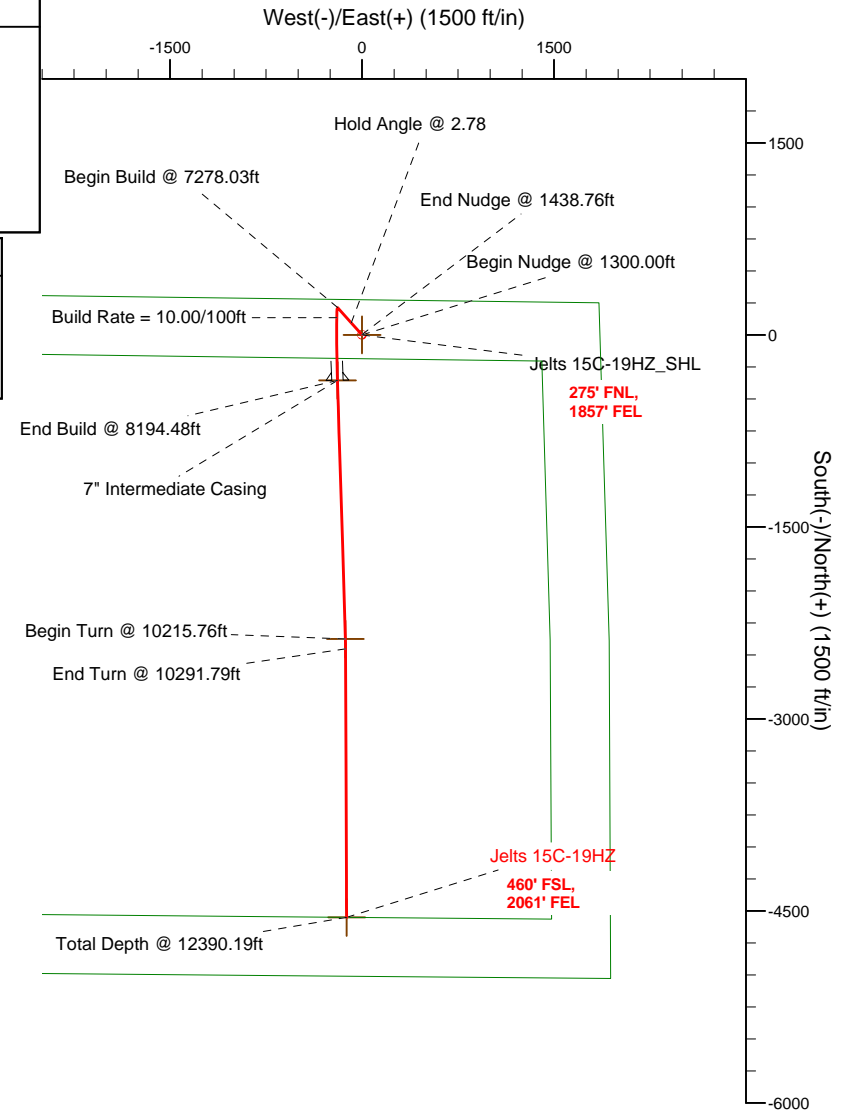
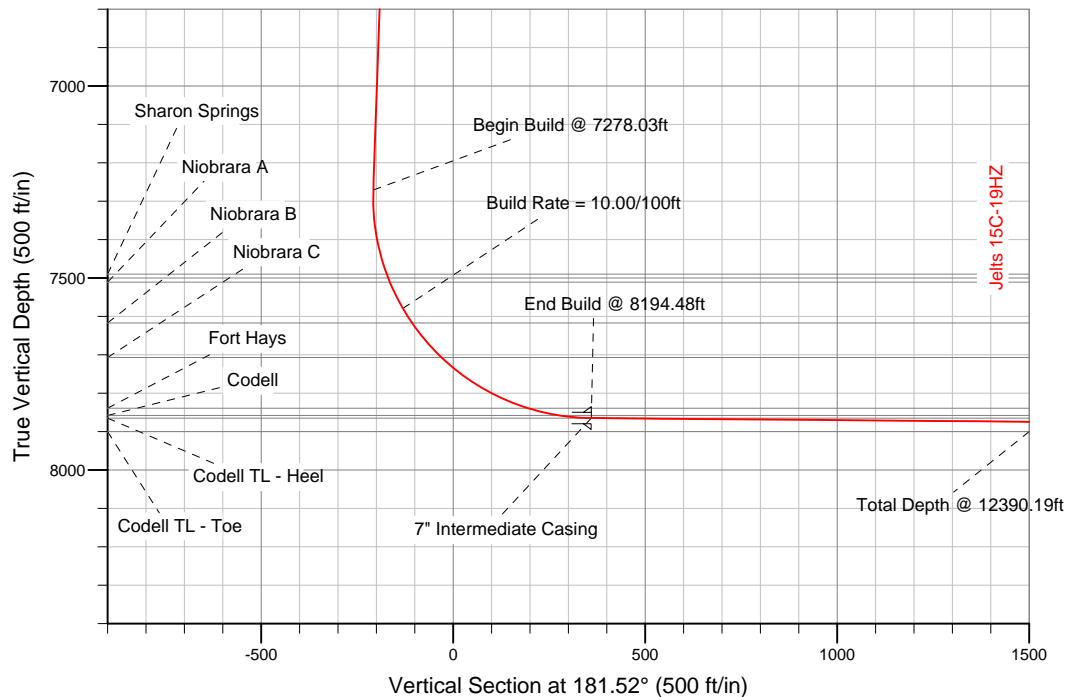
HALLIBURTON
Sperry Drilling

SECTION DETAILS

Sec	MD	Inc	Azi	TVD	+N/-S	+E/-W	DLeg	TFace	VSec	Target
1	0.00	0.00	0.00	0.00	0.00	0.00	0.00	0.00	0.00	
2	1300.00	0.00	0.00	1300.00	0.00	0.00	0.00	0.00	0.00	
3	1438.76	2.78	318.14	1438.71	2.50	-2.24	2.00	318.14	-2.44	
4	7278.03	2.78	318.14	7271.13	213.08	-190.90	0.00	0.00	-207.94	
5	8194.48	89.52	178.26	7865.00	-355.00	-192.00	10.00	-139.87	359.98	Jelts 15C-19HZ_CP
6	10215.76	89.52	178.26	7881.86	-2375.28	-130.47	0.00	0.00	2377.91	Jelts 15C-19HZ_TP
7	10291.79	89.52	179.78	7882.49	-2451.29	-129.17	2.00	90.01	2453.86	
8	12390.19	89.52	179.78	7900.00	-4549.60	-120.98	0.00	0.00	4551.21	Jelts 15C-19HZ_BHL

WELLBORE TARGET DETAILS (LAT/LONG)

Name	TVD	+N/-S	+E/-W	Latitude	Longitude	Shape
Jelts 15C-19HZ_SHL	0.00	0.00	0.00	40.043130	-104.930749	Point
Jelts 15C-19HZ_CP	7865.00	-355.00	-192.00	40.042155	-104.931435	Point
Jelts 15C-19HZ_TP	7881.86	-2375.28	-130.47	40.036610	-104.931215	Point
Jelts 15C-19HZ_BHL	7900.00	-4549.60	-120.98	40.030641	-104.931181	Point



WELL DETAILS: Jelts 15C-19HZ

Ground Level: 5148.00 RKB=17 @ 5165.00ft (Drilling Rig)

Plan: Plan B Rev 0 Permit (Jelts 15C-19HZ/Plan B Rev 0)

Created By: Fred Hartmann Date: 12/03/2012
Reviewed: Date:

Plan Report for Jelts 15C-19HZ - Plan B Rev 0 Permit

Measured Depth (ft)	Inclination (°)	Azimuth (°)	Vertical Depth (ft)	+N/-S (ft)	+E/-W (ft)	Vertical Section (ft)	Dogleg Rate (°/100ft)	Build Rate (°/100ft)	Turn Rate (°/100ft)	Toolface Azimuth (°)
0.00	0.00	0.00	0.00	0.00	0.00	0.00	0.00	0.00	0.00	0.00
Jelts 15C-19HZ_SHL										
100.00	0.00	0.00	100.00	0.00	0.00	0.00	0.00	0.00	0.00	0.00
200.00	0.00	0.00	200.00	0.00	0.00	0.00	0.00	0.00	0.00	0.00
300.00	0.00	0.00	300.00	0.00	0.00	0.00	0.00	0.00	0.00	0.00
400.00	0.00	0.00	400.00	0.00	0.00	0.00	0.00	0.00	0.00	0.00
500.00	0.00	0.00	500.00	0.00	0.00	0.00	0.00	0.00	0.00	0.00
600.00	0.00	0.00	600.00	0.00	0.00	0.00	0.00	0.00	0.00	0.00
700.00	0.00	0.00	700.00	0.00	0.00	0.00	0.00	0.00	0.00	0.00
800.00	0.00	0.00	800.00	0.00	0.00	0.00	0.00	0.00	0.00	0.00
900.00	0.00	0.00	900.00	0.00	0.00	0.00	0.00	0.00	0.00	0.00
1,000.00	0.00	0.00	1,000.00	0.00	0.00	0.00	0.00	0.00	0.00	0.00
1,100.00	0.00	0.00	1,100.00	0.00	0.00	0.00	0.00	0.00	0.00	0.00
1,200.00	0.00	0.00	1,200.00	0.00	0.00	0.00	0.00	0.00	0.00	0.00
1,300.00	0.00	0.00	1,300.00	0.00	0.00	0.00	0.00	0.00	0.00	0.00
Begin Nudge @ 1300.00ft										
1,400.00	2.00	318.14	1,399.98	1.30	-1.16	-1.27	2.00	2.00	0.00	318.14
1,438.76	2.78	318.14	1,438.71	2.50	-2.24	-2.44	2.00	2.00	0.00	0.00
End Nudge @ 1438.76ft										
1,500.00	2.78	318.14	1,499.87	4.71	-4.22	-4.60	0.00	0.00	0.00	0.00
1,600.00	2.78	318.14	1,599.76	8.32	-7.45	-8.12	0.00	0.00	0.00	0.00
1,700.00	2.78	318.14	1,699.64	11.92	-10.68	-11.64	0.00	0.00	0.00	0.00
1,800.00	2.78	318.14	1,799.52	15.53	-13.91	-15.15	0.00	0.00	0.00	0.00
1,900.00	2.78	318.14	1,899.40	19.14	-17.14	-18.67	0.00	0.00	0.00	0.00
2,000.00	2.78	318.14	1,999.29	22.74	-20.37	-22.19	0.00	0.00	0.00	0.00
2,100.00	2.78	318.14	2,099.17	26.35	-23.61	-25.71	0.00	0.00	0.00	0.00
2,200.00	2.78	318.14	2,199.05	29.96	-26.84	-29.23	0.00	0.00	0.00	0.00
2,300.00	2.78	318.14	2,298.94	33.56	-30.07	-32.75	0.00	0.00	0.00	0.00
2,400.00	2.78	318.14	2,398.82	37.17	-33.30	-36.27	0.00	0.00	0.00	0.00
2,500.00	2.78	318.14	2,498.70	40.77	-36.53	-39.79	0.00	0.00	0.00	0.00
2,600.00	2.78	318.14	2,598.58	44.38	-39.76	-43.31	0.00	0.00	0.00	0.00
2,700.00	2.78	318.14	2,698.47	47.99	-42.99	-46.83	0.00	0.00	0.00	0.00
2,800.00	2.78	318.14	2,798.35	51.59	-46.22	-50.35	0.00	0.00	0.00	0.00
2,900.00	2.78	318.14	2,898.23	55.20	-49.45	-53.87	0.00	0.00	0.00	0.00
3,000.00	2.78	318.14	2,998.11	58.81	-52.68	-57.38	0.00	0.00	0.00	0.00
3,100.00	2.78	318.14	3,098.00	62.41	-55.91	-60.90	0.00	0.00	0.00	0.00
3,200.00	2.78	318.14	3,197.88	66.02	-59.14	-64.42	0.00	0.00	0.00	0.00
3,300.00	2.78	318.14	3,297.76	69.62	-62.38	-67.94	0.00	0.00	0.00	0.00
3,400.00	2.78	318.14	3,397.65	73.23	-65.61	-71.46	0.00	0.00	0.00	0.00
3,500.00	2.78	318.14	3,497.53	76.84	-68.84	-74.98	0.00	0.00	0.00	0.00
3,600.00	2.78	318.14	3,597.41	80.44	-72.07	-78.50	0.00	0.00	0.00	0.00
3,700.00	2.78	318.14	3,697.29	84.05	-75.30	-82.02	0.00	0.00	0.00	0.00
3,800.00	2.78	318.14	3,797.18	87.66	-78.53	-85.54	0.00	0.00	0.00	0.00
3,900.00	2.78	318.14	3,897.06	91.26	-81.76	-89.06	0.00	0.00	0.00	0.00
4,000.00	2.78	318.14	3,996.94	94.87	-84.99	-92.58	0.00	0.00	0.00	0.00
Hold Angle @ 2.78										
4,100.00	2.78	318.14	4,096.82	98.48	-88.22	-96.10	0.00	0.00	0.00	0.00
4,200.00	2.78	318.14	4,196.71	102.08	-91.45	-99.61	0.00	0.00	0.00	0.00
4,300.00	2.78	318.14	4,296.59	105.69	-94.68	-103.13	0.00	0.00	0.00	0.00
4,400.00	2.78	318.14	4,396.47	109.29	-97.91	-106.65	0.00	0.00	0.00	0.00
4,500.00	2.78	318.14	4,496.36	112.90	-101.14	-110.17	0.00	0.00	0.00	0.00
4,600.00	2.78	318.14	4,596.24	116.51	-104.38	-113.69	0.00	0.00	0.00	0.00
4,700.00	2.78	318.14	4,696.12	120.11	-107.61	-117.21	0.00	0.00	0.00	0.00
4,800.00	2.78	318.14	4,796.00	123.72	-110.84	-120.73	0.00	0.00	0.00	0.00
4,900.00	2.78	318.14	4,895.89	127.33	-114.07	-124.25	0.00	0.00	0.00	0.00
4,919.14	2.78	318.14	4,915.00	128.02	-114.69	-124.92	0.00	0.00	0.00	0.00
Sussex										
5,000.00	2.78	318.14	4,995.77	130.93	-117.30	-127.77	0.00	0.00	0.00	0.00

Plan Report for Jelts 15C-19HZ - Plan B Rev 0 Permit

Measured Depth (ft)	Inclination (°)	Azimuth (°)	Vertical Depth (ft)	+N-S (ft)	+E-W (ft)	Vertical Section (ft)	Dogleg Rate (°/100ft)	Build Rate (°/100ft)	Turn Rate (°/100ft)	Toolface Azimuth (°)
5,100.00	2.78	318.14	5,095.65	134.54	-120.53	-131.29	0.00	0.00	0.00	0.00
5,200.00	2.78	318.14	5,195.53	138.14	-123.76	-134.81	0.00	0.00	0.00	0.00
5,300.00	2.78	318.14	5,295.42	141.75	-126.99	-138.33	0.00	0.00	0.00	0.00
5,400.00	2.78	318.14	5,395.30	145.36	-130.22	-141.84	0.00	0.00	0.00	0.00
5,500.00	2.78	318.14	5,495.18	148.96	-133.45	-145.36	0.00	0.00	0.00	0.00
5,600.00	2.78	318.14	5,595.07	152.57	-136.68	-148.88	0.00	0.00	0.00	0.00
5,700.00	2.78	318.14	5,694.95	156.18	-139.91	-152.40	0.00	0.00	0.00	0.00
5,800.00	2.78	318.14	5,794.83	159.78	-143.15	-155.92	0.00	0.00	0.00	0.00
5,900.00	2.78	318.14	5,894.71	163.39	-146.38	-159.44	0.00	0.00	0.00	0.00
6,000.00	2.78	318.14	5,994.60	166.99	-149.61	-162.96	0.00	0.00	0.00	0.00
6,100.00	2.78	318.14	6,094.48	170.60	-152.84	-166.48	0.00	0.00	0.00	0.00
6,200.00	2.78	318.14	6,194.36	174.21	-156.07	-170.00	0.00	0.00	0.00	0.00
6,300.00	2.78	318.14	6,294.24	177.81	-159.30	-173.52	0.00	0.00	0.00	0.00
6,400.00	2.78	318.14	6,394.13	181.42	-162.53	-177.04	0.00	0.00	0.00	0.00
6,500.00	2.78	318.14	6,494.01	185.03	-165.76	-180.55	0.00	0.00	0.00	0.00
6,600.00	2.78	318.14	6,593.89	188.63	-168.99	-184.07	0.00	0.00	0.00	0.00
6,700.00	2.78	318.14	6,693.78	192.24	-172.22	-187.59	0.00	0.00	0.00	0.00
6,800.00	2.78	318.14	6,793.66	195.85	-175.45	-191.11	0.00	0.00	0.00	0.00
6,900.00	2.78	318.14	6,893.54	199.45	-178.68	-194.63	0.00	0.00	0.00	0.00
7,000.00	2.78	318.14	6,993.42	203.06	-181.92	-198.15	0.00	0.00	0.00	0.00
7,100.00	2.78	318.14	7,093.31	206.66	-185.15	-201.67	0.00	0.00	0.00	0.00
7,200.00	2.78	318.14	7,193.19	210.27	-188.38	-205.19	0.00	0.00	0.00	0.00
7,278.03	2.78	318.14	7,271.13	213.08	-190.90	-207.94	0.00	0.00	0.00	0.00
Begin Build @ 7278.03ft										
7,300.00	1.79	265.87	7,293.08	213.46	-191.59	-208.29	10.00	-4.49	-237.94	-139.87
7,400.00	10.23	188.20	7,392.51	204.53	-194.43	-199.29	10.00	8.44	-77.67	-87.63
7,500.00	20.15	183.12	7,488.90	178.48	-196.64	-173.19	10.00	9.92	-5.08	-10.12
7,501.17	20.27	183.09	7,490.00	178.08	-196.66	-172.78	10.00	9.96	-2.62	-5.20
Sharon Springs										
7,523.72	22.51	182.56	7,511.00	169.86	-197.06	-164.56	10.00	9.96	-2.35	-5.17
Niobrara A										
7,600.00	30.12	181.33	7,579.32	136.09	-198.16	-130.77	10.00	9.97	-1.62	-4.67
Build Rate = 10.00/100ft										
7,644.61	34.58	180.84	7,617.00	112.23	-198.60	-106.91	10.00	9.98	-1.09	-3.57
Niobrara B										
7,700.00	40.11	180.37	7,661.02	78.64	-198.95	-73.33	10.00	9.99	-0.85	-3.15
7,763.17	46.42	179.94	7,707.00	35.37	-199.05	-30.07	10.00	9.99	-0.67	-2.78
Niobrara C										
7,800.00	50.10	179.74	7,731.51	7.90	-198.98	-2.61	10.00	9.99	-0.56	-2.47
7,900.00	60.09	179.27	7,788.67	-74.00	-198.25	79.25	10.00	9.99	-0.47	-2.33
8,000.00	70.08	178.89	7,830.74	-164.57	-196.78	169.74	10.00	9.99	-0.38	-2.06
8,025.88	72.67	178.80	7,839.00	-189.09	-196.28	194.24	10.00	9.99	-0.35	-1.90
Fort Hays										
8,100.00	80.08	178.55	7,856.45	-261.05	-194.62	266.13	10.00	9.99	-0.33	-1.87
8,109.46	81.02	178.52	7,858.00	-270.38	-194.38	275.45	10.00	9.99	-0.32	-1.82
Codell										
8,194.48	89.52	178.26	7,865.00	-355.00	-192.00	359.98	10.00	9.99	-0.31	-1.81
End Build @ 8194.48ft - Codell TL - Heel - 7" Intermediate Casing - Jelts 15C-19HZ_CP										
8,200.00	89.52	178.26	7,865.05	-360.52	-191.83	365.49	0.00	0.00	0.00	-1.79
8,300.00	89.52	178.26	7,865.88	-460.47	-188.79	465.33	0.00	0.00	0.00	0.00
8,400.00	89.52	178.26	7,866.71	-560.42	-185.74	565.16	0.00	0.00	0.00	0.00
8,500.00	89.52	178.26	7,867.55	-660.37	-182.70	664.99	0.00	0.00	0.00	0.00
8,600.00	89.52	178.26	7,868.38	-760.32	-179.66	764.83	0.00	0.00	0.00	0.00
8,700.00	89.52	178.26	7,869.22	-860.27	-176.61	864.66	0.00	0.00	0.00	0.00
8,800.00	89.52	178.26	7,870.05	-960.22	-173.57	964.49	0.00	0.00	0.00	0.00
8,900.00	89.52	178.26	7,870.88	-1,060.17	-170.52	1,064.33	0.00	0.00	0.00	0.00
9,000.00	89.52	178.26	7,871.72	-1,160.12	-167.48	1,164.16	0.00	0.00	0.00	0.00
9,100.00	89.52	178.26	7,872.55	-1,260.07	-164.44	1,264.00	0.00	0.00	0.00	0.00

Plan Report for Jelts 15C-19HZ - Plan B Rev 0 Permit

Measured Depth (ft)	Inclination (°)	Azimuth (°)	Vertical Depth (ft)	+N/-S (ft)	+E/-W (ft)	Vertical Section (ft)	Dogleg Rate (°/100ft)	Build Rate (°/100ft)	Turn Rate (°/100ft)	Toolface Azimuth (°)
9,200.00	89.52	178.26	7,873.39	-1,360.02	-161.39	1,363.83	0.00	0.00	0.00	0.00
9,300.00	89.52	178.26	7,874.22	-1,459.97	-158.35	1,463.66	0.00	0.00	0.00	0.00
9,400.00	89.52	178.26	7,875.06	-1,559.92	-155.31	1,563.50	0.00	0.00	0.00	0.00
9,500.00	89.52	178.26	7,875.89	-1,659.87	-152.26	1,663.33	0.00	0.00	0.00	0.00
9,600.00	89.52	178.26	7,876.72	-1,759.82	-149.22	1,763.17	0.00	0.00	0.00	0.00
9,700.00	89.52	178.26	7,877.56	-1,859.77	-146.17	1,863.00	0.00	0.00	0.00	0.00
9,800.00	89.52	178.26	7,878.39	-1,959.72	-143.13	1,962.83	0.00	0.00	0.00	0.00
9,900.00	89.52	178.26	7,879.23	-2,059.67	-140.09	2,062.67	0.00	0.00	0.00	0.00
10,000.00	89.52	178.26	7,880.06	-2,159.62	-137.04	2,162.50	0.00	0.00	0.00	0.00
10,100.00	89.52	178.26	7,880.89	-2,259.57	-134.00	2,262.34	0.00	0.00	0.00	0.00
10,200.00	89.52	178.26	7,881.73	-2,359.52	-130.95	2,362.17	0.00	0.00	0.00	0.00
10,215.76	89.52	178.26	7,881.86	-2,375.28	-130.47	2,377.91	0.00	0.00	0.00	0.00
Begin Turn @ 10215.76ft - Jelts 15C-19HZ_TP										
10,291.79	89.52	179.78	7,882.49	-2,451.29	-129.17	2,453.86	2.00	0.00	2.00	90.01
End Turn @ 10291.79ft										
10,300.00	89.52	179.78	7,882.56	-2,459.50	-129.14	2,462.06	0.00	0.00	0.00	90.00
10,400.00	89.52	179.78	7,883.40	-2,559.49	-128.75	2,562.01	0.00	0.00	0.00	0.00
10,500.00	89.52	179.78	7,884.23	-2,659.49	-128.36	2,661.96	0.00	0.00	0.00	0.00
10,600.00	89.52	179.78	7,885.07	-2,759.49	-127.97	2,761.91	0.00	0.00	0.00	0.00
10,700.00	89.52	179.78	7,885.90	-2,859.48	-127.57	2,861.86	0.00	0.00	0.00	0.00
10,800.00	89.52	179.78	7,886.73	-2,959.48	-127.18	2,961.81	0.00	0.00	0.00	0.00
10,900.00	89.52	179.78	7,887.57	-3,059.47	-126.79	3,061.76	0.00	0.00	0.00	0.00
11,000.00	89.52	179.78	7,888.40	-3,159.47	-126.40	3,161.71	0.00	0.00	0.00	0.00
11,100.00	89.52	179.78	7,889.24	-3,259.46	-126.01	3,261.66	0.00	0.00	0.00	0.00
11,200.00	89.52	179.78	7,890.07	-3,359.46	-125.62	3,361.61	0.00	0.00	0.00	0.00
11,300.00	89.52	179.78	7,890.91	-3,459.46	-125.23	3,461.56	0.00	0.00	0.00	0.00
11,400.00	89.52	179.78	7,891.74	-3,559.45	-124.84	3,561.51	0.00	0.00	0.00	0.00
11,500.00	89.52	179.78	7,892.57	-3,659.45	-124.45	3,661.46	0.00	0.00	0.00	0.00
11,600.00	89.52	179.78	7,893.41	-3,759.44	-124.06	3,761.41	0.00	0.00	0.00	0.00
11,700.00	89.52	179.78	7,894.24	-3,859.44	-123.67	3,861.36	0.00	0.00	0.00	0.00
11,800.00	89.52	179.78	7,895.08	-3,959.44	-123.28	3,961.31	0.00	0.00	0.00	0.00
11,900.00	89.52	179.78	7,895.91	-4,059.43	-122.89	4,061.26	0.00	0.00	0.00	0.00
12,000.00	89.52	179.78	7,896.74	-4,159.43	-122.50	4,161.21	0.00	0.00	0.00	0.00
12,100.00	89.52	179.78	7,897.58	-4,259.42	-122.11	4,261.16	0.00	0.00	0.00	0.00
12,200.00	89.52	179.78	7,898.41	-4,359.42	-121.72	4,361.11	0.00	0.00	0.00	0.00
12,300.00	89.52	179.78	7,899.25	-4,459.41	-121.33	4,461.06	0.00	0.00	0.00	0.00
12,390.19	89.52	179.78	7,900.00	-4,549.60	-120.98	4,551.21	0.00	0.00	0.00	0.00
Codell TL - Toe - Jelts 15C-19HZ_BHL										

Plan Annotations

Measured Depth (ft)	Vertical Depth (ft)	Local Coordinates		Comment
		+N/-S (ft)	+E/-W (ft)	
1,300.00	1,300.00	0.00	0.00	Begin Nudge @ 1300.00ft
1,438.76	1,438.71	2.50	-2.24	End Nudge @ 1438.76ft
4,000.00	3,996.94	94.87	-84.99	Hold Angle @ 2.78
7,278.03	7,271.13	213.08	-190.90	Begin Build @ 7278.03ft
7,600.00	7,579.32	136.09	-198.16	Build Rate = 10.00/100ft
8,194.48	7,865.00	-355.00	-192.00	End Build @ 8194.48ft
10,215.76	7,881.86	-2,375.28	-130.47	Begin Turn @ 10215.76ft
10,291.79	7,882.49	-2,451.29	-129.17	End Turn @ 10291.79ft
12,390.19	7,900.00	-4,549.60	-120.98	Total Depth @ 12390.19ft

Plan Report for Jelts 15C-19HZ - Plan B Rev 0 Permit

Vertical Section Information

Angle Type	Target	Azimuth (°)	Origin Type	Origin +N/_S (ft)	Origin +E/-W (ft)	Start TVD (ft)
Target	Jelts 15C-19HZ_BHL	181.52	Slot	0.00	0.00	7,900.00

Survey tool program

From (ft)	To (ft)	Survey/Plan	Survey Tool
0.00	12,390.19	Plan B Rev 0 Permit	MWD

Casing Details

Measured Depth (ft)	Vertical Depth (ft)	Name	Casing Diameter (")	Hole Diameter (")
8,194.48	7,865.00	7" Intermediate Casing	7	8-3/4

Formation Details

Measured Depth (ft)	Vertical Depth (ft)	Name	Lithology	Dip (°)	Dip Direction (°)
4,919.14	4,915.00	Sussex		0.00	
7,501.17	7,490.00	Sharon Springs		0.00	
7,523.72	7,511.00	Niobrara A		0.00	
7,644.61	7,617.00	Niobrara B		0.00	
7,763.17	7,707.00	Niobrara C		0.00	
8,025.88	7,839.00	Fort Hays		0.00	
8,109.46	7,858.00	Codell		0.00	
8,194.48	7,865.00	Codell TL - Heel		0.00	
12,390.19	7,900.00	Codell TL - Toe		0.00	

Targets associated with this wellbore

Target Name	TVD (ft)	+N/-S (ft)	+E/-W (ft)	Shape
Jelts 15C-19HZ_SHL	0.00	0.00	0.00	Point
Jelts 15C-19HZ_CP	7,865.00	-355.00	-192.00	Point
Jelts 15C-19HZ_TP	7,881.86	-2,375.28	-130.47	Point
Jelts 15C-19HZ_BHL	7,900.00	-4,549.60	-120.98	Point

North Reference Sheet for Sec. 19-T1N-R67W - Jelts 15C-19HZ - Plan B Rev 0

All data is in US Feet unless otherwise stated. Directions and Coordinates are relative to True North Reference.
 Vertical Depths are relative to RKB=17 @ 5165.00ft (Drilling Rig). Northing and Easting are relative to Jelts 15C-19HZ
 Coordinate System is US State Plane 1983, Colorado Northern Zone using datum North American Datum 1983, ellipsoid GRS 1980

Projection method is Lambert Conformal Conic (2 parallel)
 Central Meridian is -105.50°, Longitude Origin:0.000000°, Latitude Origin:40.783333°
 False Easting: 3,000,000.00ft, False Northing: 1,000,000.00ft, Scale Reduction: 0.99996338

Grid Coordinates of Well: 1,259,069.56 ft N, 3,159,375.76 ft E
 Geographical Coordinates of Well: 40° 02' 35.27" N, 104° 55' 50.70" W
 Grid Convergence at Surface is: 0.37°

Based upon Minimum Curvature type calculations, at a Measured Depth of 12,390.19ft
 the Bottom Hole Displacement is 4,551.21ft in the Direction of 181.52° (True).

Magnetic Convergence at surface is: -8.40° (5 December 2012, , BGGM2012)

