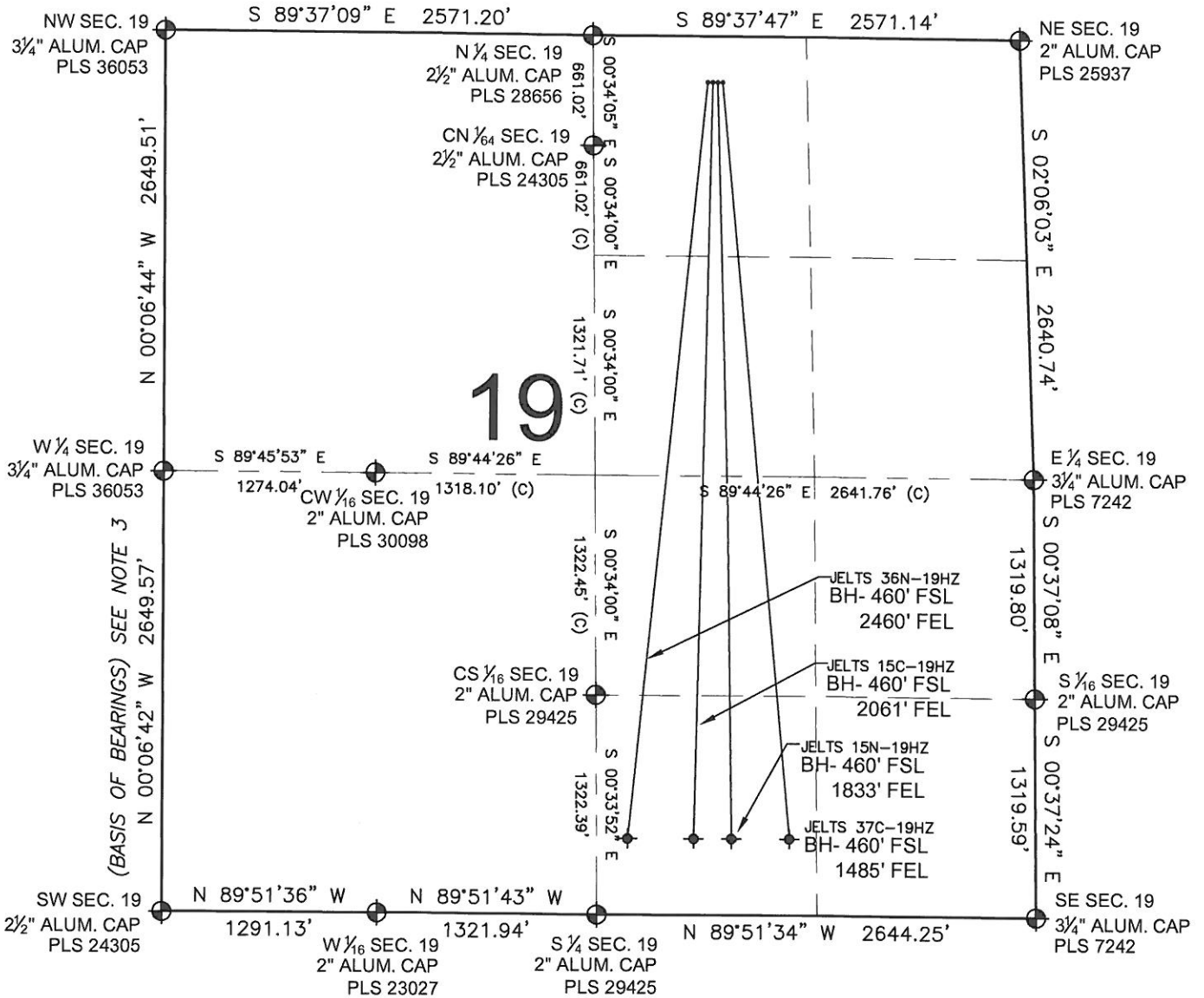


MULTI-WELL PLAN

JELTS 15C-19HZ

SECTION 19, TOWNSHIP 1 NORTH, RANGE 67 WEST, 6TH P.M.

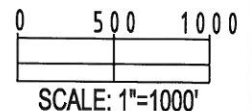


- NOTES:**
- THIS FIELD SURVEY CONFORMS TO THE MINIMUM STANDARDS SET BY THE C.O.G.C.C., RULE NO. 215
 - HORIZONTAL POSITIONS AND ORTHOMETRIC ELEVATIONS SHOWN AT THE WELL HEAD, ARE BASED ON GPS-RTK POSITIONS DERIVED FROM MINIMUM 2-HOUR STATIC OBSERVATIONS CORRECTED BY THE NATIONAL GEODETIC SURVEY ONLINE POSITIONING USER SERVICE, O.P.U.S. DATUM: HORIZONTAL = NAD83/2007, VERTICAL = NAVD88
 - THE BASIS OF BEARINGS ARE STATE PLANE COORDINATE SYSTEM GRID BEARINGS SHOWN HEREON BETWEEN THE DESCRIBED MONUMENTS SHOWN HEREON.
 - GRID DISTANCES ARE SHOWN, AS MEASURED IN THE FIELD, WITH TIES TO WELLS MEASURED PERPENDICULAR TO SECTION LINES.

- NOTES:**
- JELTS 37C-19HZ TO BE AT 275' FNL, 1798' FEL. BOTTOM HOLE AT 460' FSL & 1485' FEL.
 - JELTS 15N-19HZ TO BE AT 275' FNL, 1828' FEL. BOTTOM HOLE AT 460' FSL & 1833' FEL.
 - JELTS 15C-19HZ TO BE AT 275' FNL, 1857' FEL. BOTTOM HOLE AT 460' FSL & 2061' FEL.
 - JELTS 36N-19HZ TO BE AT 275' FNL, 1888' FEL. BOTTOM HOLE AT 460' FSL & 2460' FEL.

LEGEND

- ⊙ = EXISTING MONUMENT
- ⊙ = PROPOSED WELL
- ◆ = BOTTOM HOLE
- ◆ = EXISTING WELL
- BH= BOTTOM HOLE



PREPARED BY:



KERR-MCGEE OIL & GAS ONSHORE LP

FIELD DATE: 10-24-12	PAD NAME: JELTS 4 PAD NWNE
DRAWING DATE: 10-31-12	SURFACE LOCATION: NW 1/4 NE 1/4, SEC. 19, T1N, R67W, 6TH P.M.
BY: SMF	CHECKED: MCH
WELD COUNTY, COLORADO	