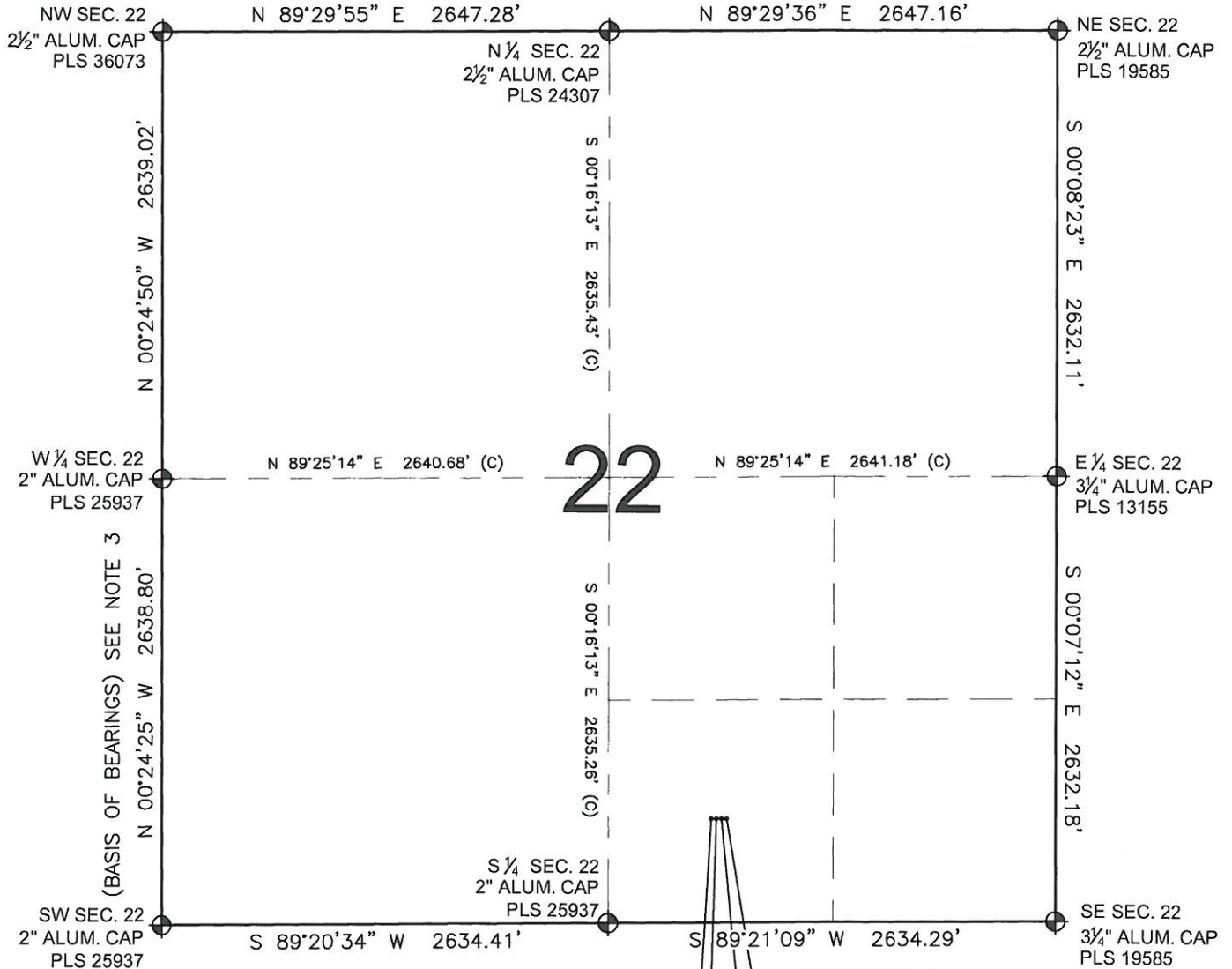


# MULTI-WELL PLAN GOBBLER 15N-27HZ

SECTION 22, TOWNSHIP 2 NORTH, RANGE 66 WEST, 6TH P.M.



## LEGEND

- ⊕ = EXISTING MONUMENT
- ⊙ = PROPOSED WELL
- ⬥ = BOTTOM HOLE
- ◆ = EXISTING WELL
- BH= BOTTOM HOLE

## NOTES:

- THIS FIELD SURVEY CONFORMS TO THE MINIMUM STANDARDS SET BY THE C.O.G.C.C., RULE NO. 215
- HORIZONTAL POSITIONS AND ORTHOMETRIC ELEVATIONS SHOWN AT THE WELL HEAD, ARE BASED ON GPS-RTK POSITIONS DERIVED FROM MINIMUM 2-HOUR STATIC OBSERVATIONS CORRECTED BY THE NATIONAL GEODETIC SURVEY ONLINE POSITIONING USER SERVICE, O.P.U.S. DATUM: HORIZONTAL = NAD83/2007, VERTICAL = NAVD88
- THE BASIS OF BEARINGS ARE STATE PLANE COORDINATE SYSTEM GRID BEARINGS SHOWN HEREON BETWEEN THE DESCRIBED THE MONUMENTS SHOWN HEREON.
- GRID DISTANCES ARE SHOWN, AS MEASURED IN THE FIELD, WITH TIES TO WELLS MEASURED PERPENDICULAR TO SECTION LINES.

## NOTES:

- GOBBLER 36C-27HZ TO BE AT 615' FSL, 2032' FEL. BOTTOM HOLE AT 460' FSL & 2427' FEL.
- GOBBLER 15N-27HZ TO BE AT 615' FSL, 2002' FEL. BOTTOM HOLE AT 460' FSL & 2227' FEL.
- GOBBLER 37N-27HZ TO BE AT 615' FSL, 1972' FEL. BOTTOM HOLE AT 460' FSL & 1536' FEL.
- GOBBLER 37C-27HZ TO BE AT 615' FSL, 1942' FEL. BOTTOM HOLE AT 460' FSL & 1177' FEL.

PREPARED BY:



KERR-MCGEE OIL & GAS ONSHORE LP

FIELD DATE: 03-23-12	PAD NAME: GOBBLER 4 PAD
DRAWING DATE: 07-26-12	SURFACE LOCATION: WELD COUNTY, COLORADO
BY: SMF	REV: JAH
SW 1/4 SE 1/4, SEC. 22, T2N, R66W, 6TH P.M.	

