

T10N, R58W, 6th P.M.

WHITTING OIL & GAS CORP.

2010 UELS Alum. Cap,  
0.3' High  
Lat: 40.802117°  
Long: 103.879772°  
Target  
Bottom Hole

2010 UELS Alum. Cap,  
0.5' Below Ground  
Lat: 40.802136°  
Long: 103.860622°

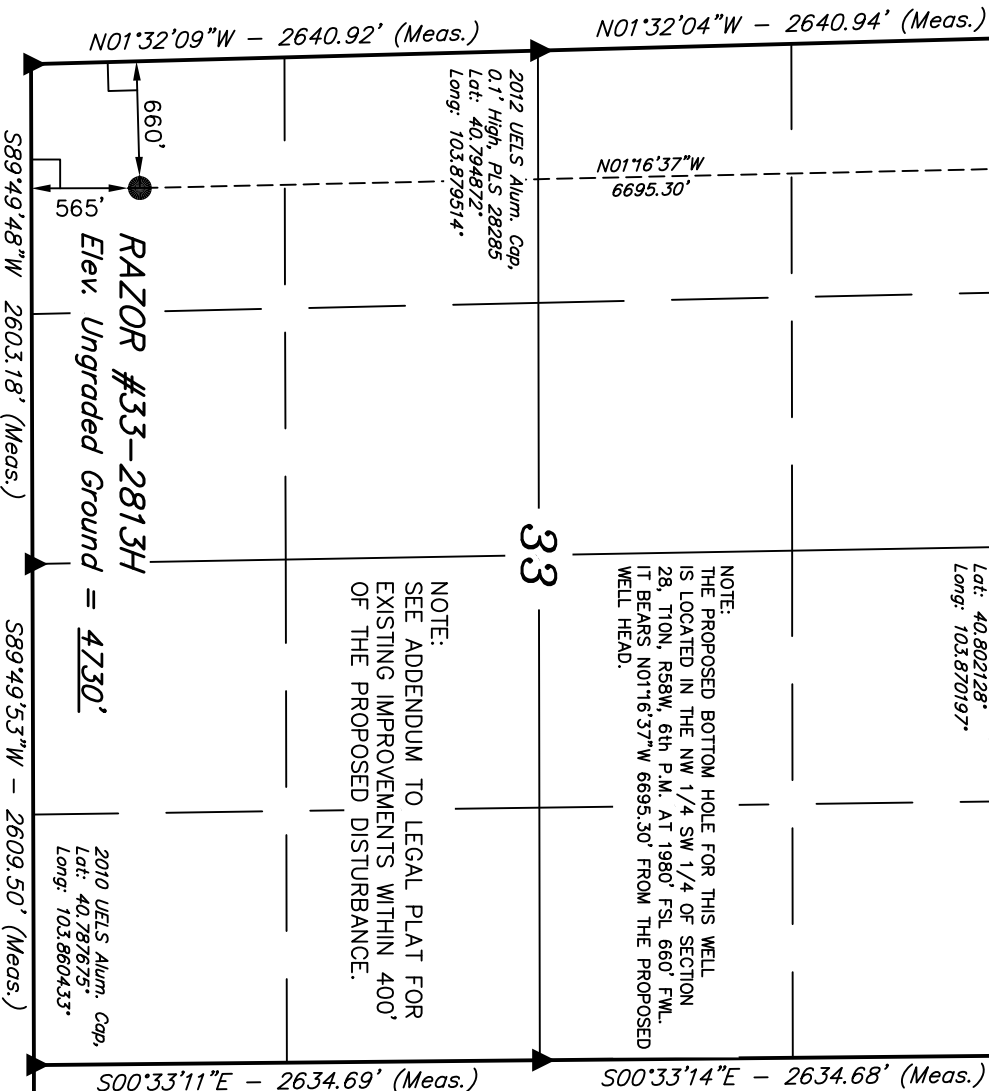
Well location, RAZOR #33-2813H (SURFACE LOCATION), located as shown in the SW 1/4 SW 1/4 of Section 33, T10N, R58W, 6th P.M., Weld County, Colorado.

BASIS OF ELEVATION

SPOT ELEVATION LOCATED AT THE NORTHEAST CORNER OF SECTION 15, T9N, R58W, 6th P.M. TAKEN FROM THE GATEHOOK SPRING, QUADRANGLE, COLORADO, WELD COUNTY, 7.5 MINUTE QUAD (TOPOGRAPHIC MAP) PUBLISHED BY THE UNITED STATES DEPARTMENT OF THE INTERIOR, GEOLOGICAL SURVEY. SAID ELEVATION IS MARKED AS BEING 4679 FEET.

BASIS OF BEARINGS

BASIS OF BEARINGS IS A C.P.S. OBSERVATION.



NOTE:  
SEE ADDENDUM TO LEGAL PLAT FOR  
EXISTING IMPROVEMENTS WITHIN 400'  
OF THE PROPOSED DISTURBANCE.

NOTE:  
THE PROPOSED BOTTOM HOLE FOR THIS WELL  
IS LOCATED IN THE NW 1/4 SW 1/4 OF SECTION  
28, T10N, R58W, 6th P.M. AT 1980' FSL 660' F.W.L.  
IT BEARS N01°16'37\"W 6695.30' FROM THE PROPOSED  
WELL HEAD.

THIS IS TO CERTIFY THAT THE ABOVE PLAT WAS PREPARED FROM  
FIELD NOTES OF ACTUAL SURVEYS MADE BY ME OR UNDER MY  
SUPERVISION AND THAT THE SAME ARE TRUE AND CORRECT TO THE  
BEST OF MY KNOWLEDGE AND BELIEF

REVISED 07-23-12 H.K.W.  
REVISED 05-09-12 W.M.  
REVISED 05-07-12 W.M.

REGISTERED LAND SURVEYOR  
REGISTRATION NO. 1492  
STATE OF COLORADO  
07-30-12

UNTANH ENGINEERING & LAND SURVEYING  
85 SOUTH 200 EAST - VERNAL, UTAH 84078  
(435) 789-1017

LEGEND:

- 90° SYMBOL
- PROPOSED WELL HEAD.
- SECTION CORNERS LOCATED.

PDOP = 1.7

NAD 83 (SURFACE LOCATION)	
LATITUDE = 40°47'21.07" (40.789186)	
LONGITUDE = 103°52'36.93" (103.876925)	
NAD 27 (SURFACE LOCATION)	
LATITUDE = 40°47'21.12" (40.789200)	
LONGITUDE = 103°52'35.12" (103.876422)	

SCALE	DATE SURVEYED:	DATE DRAWN:
1" = 1000'	04-26-12	04-27-12
PARTY	REFERENCES	
D.N. G.W. R.L.L.	G.L.O. PLAT	
WEATHER	FILE	
WARM	WHITTING OIL & GAS CORP.	

# T10N, R58W, 6th P.M.

2010 UELS Alum. Cap.  
Flush W/Ground  
RLS 17492  
Lat: 40.816664°  
Long: 103.880000°

2010 UELS Alum. Cap.  
0.5' Below Ground  
Lat: 40.816692°  
Long: 103.860906°

N89°26'39"E - 2646.52' (Meas.)

S89°36'23"E - 2640.06' (Meas.)

2012 UELS Alum.  
Cap, 0.5' High  
Lat: 40.816736°  
Long: 103.870442°

N00°39'32"W - 2650.45' (Meas.)

2012 UELS Alum. Cap,  
0.1' High, PLS 28285  
Lat: 40.809389°  
Long: 103.879886°

2012 UELS Alum. Cap,  
PLS 28285,  
0.6' Below Ground  
Lat: 40.809414°  
Long: 103.860764°

S00°50'22"E - 2652.79' (Meas.)

N00°39'29"W - 2650.44' (Meas.)

660'  
1980'  
N01°16'37"W  
6695.30'

RAZOR #33-2813H  
Target  
Bottom Hole

NOTE:  
THE PROPOSED BOTTOM HOLE BEARS N01°16'37"W  
6695.30' FROM THE PROPOSED WELL HEAD WHICH  
IS LOCATED IN THE SW 1/4 SW 1/4 OF SECTION  
33, T10N, R58W, 6th P.M. AT 565' FSL 660' FWL.

N00°50'25"W - 2652.82' (Meas.)

2010 UELS Alum. Cap,  
0.5' Below Ground  
Lat: 40.802136°  
Long: 103.860622°

S89°57'03"W - 2651.65' (Meas.)

S89°57'02"W - 2651.62' (Meas.)

2010 UELS Alum. Cap,  
0.3' High  
Lat: 40.802117°  
Long: 103.879772°

2012 UELS Alum. Cap,  
PLS 28285, 0.2' High  
Lat: 40.802128°  
Long: 103.870197°

## LEGEND:

└ = 90° SYMBOL

● = PROPOSED WELL HEAD.

▲ = SECTION CORNERS LOCATED.

Surface Location

## WHITTING OIL & GAS CORP.

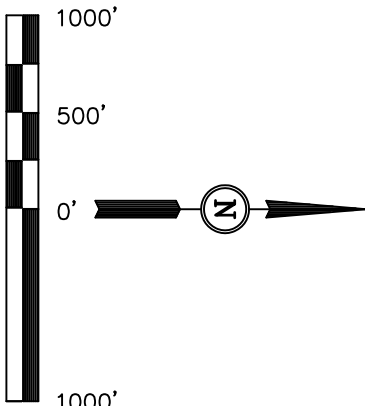
Well location, RAZOR #33-2813H (TARGET BOTTOM HOLE), located as shown in the NW 1/4 SW 1/4 of Section 28, T10N, R58W, 6th P.M., Weld County, Colorado.

### BASIS OF ELEVATION

SPOT ELEVATION LOCATED AT THE NORTHEAST CORNER OF SECTION 15, T9N, R58W, 6th P.M. TAKEN FROM THE GATEHOOK SPRING, QUADRANGLE, COLORADO, WELD COUNTY, 7.5 MINUTE QUAD (TOPOGRAPHIC MAP) PUBLISHED BY THE UNITED STATES DEPARTMENT OF THE INTERIOR, GEOLOGICAL SURVEY. SAID ELEVATION IS MARKED AS BEING 4679 FEET.

### BASIS OF BEARINGS

BASIS OF BEARINGS IS A C.P.S. OBSERVATION.



### CERTIFICATE

THIS IS TO CERTIFY THAT THE ABOVE PLAT WAS PREPARED FROM FIELD NOTES OF ACTUAL SURVEYS MADE BY ME OR UNDER MY SUPERVISION AND THAT THE SAME ARE TRUE AND CORRECT TO THE BEST OF MY KNOWLEDGE AND BELIEF.

REVISED 07-22-12 H.K.W.  
REVISED 05-09-12 W.M.  
REVISED 05-04-12 W.M.

REGISTERED LAND SURVEYOR  
REGISTRATION NO. 17492  
STATE OF COLORADO  
07-30-12

UNTIAH ENGINEERING & LAND SURVEYING  
85 SOUTH 200 EAST - VERNAL, UTAH 84078  
(435) 789-1017

SCALE 1" = 1000'	DATE SURVEYED: 04-26-12	DATE DRAWN: 04-27-12
PARTY D.N. G.W. R.L.L.	REFERENCES G.L.O. PLAT	
WEATHER WARM	FILE WHITTING OIL & GAS CORP.	