

Condor Energy, Weld County, CO

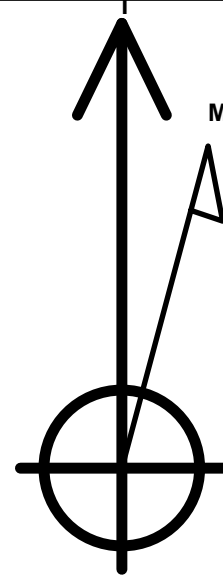
Well Name: **Waves 2H**

Surface Location: Waves 2H Pad Sec.18-T7N-R59W
 North American Datum 1983 , US State Plane 1983 , Colorado Northern Zone

Ground Elevation: 4887.0

+N/-S	+E/-W	Northing	Easting	Latitude	Longitude	Slot
0.0	0.0	1453420.19	3408283.51	40.568750	-104.030320	
RKB - 13' WELL @ 4900.0ft (RKB - 13')						

Waves 2H Pad Sec.18-T7N-R59W
 Waves 2H
 Plan #1 (9-19-12)
 15:15, September 24 2012



Azimuths to True North
 Magnetic North: 8.31°

Magnetic Field
 Strength: 53162.0nT
 Dip Angle: 67.26°
 Date: 9/19/2012
 Model: IGRF2010

WELLBORE TARGET DETAILS

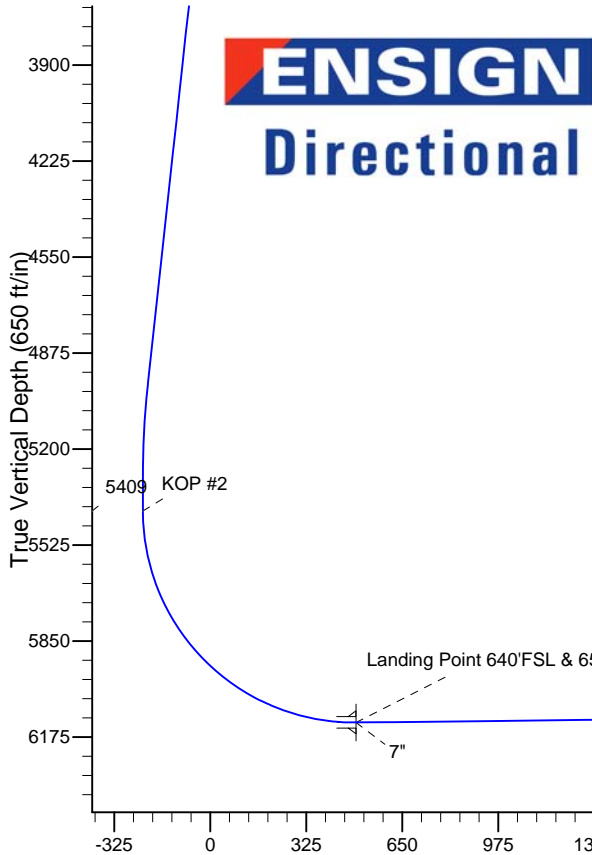
Name	TVD	+N/-S	+E/-W	Shape
HARDLINE 600' BHL	1.0	3232.3	4491.3	Polygon
HARDLINE 600' SHL	1.0	324.3	291.7	Polygon
SECTION LINE 274'S & 313'W of SHL	1.0	-274.0	-313.0	Polygon
WP1	6114.2	966.6	1140.8	Point
WP2	6116.4	1568.9	1939.7	Point
WP3	6116.9	2171.2	2738.5	Point
WP4	6122.8	2773.5	3537.4	Point
WP5	6124.6	3375.8	4336.3	Point
BHL 1550'FNL & 680'FEL	6125.4	3432.3	4411.3	Point
Landing Point 640'FSL & 650'FWL	6125.4	364.3	341.7	Point

ANNOTATIONS

TVD	MD	Annotation
2700.0	2700.0	KOP #1
5409.2	5422.3	KOP #2

SECTION DETAILS

Sec	MD	Inc	Azi	TVD	+N/-S	+E/-W	DLeg	TFace	VSec	Target
1	0.0	0.00	0.00	0.0	0.0	0.0	0.00	0.00	0.0	
2	2700.0	0.00	0.00	2700.0	0.0	0.0	0.00	0.00	0.0	
3	3364.0	6.64	253.37	3362.5	-11.0	-36.8	1.00	253.37	-35.8	
4	4981.1	6.64	253.37	4968.7	-64.5	-216.0	0.00	0.00	-210.1	
5	5313.1	0.00	0.00	5300.0	-70.0	-234.4	2.00	180.00	-228.0	
6	5422.3	0.00	0.00	5409.2	-70.0	-234.4	0.00	0.00	-228.0	
7	6549.8	90.20	52.99	6125.4	362.7	339.5	8.00	52.99	490.6	
8	6552.6	90.20	52.99	6125.4	364.3	341.7	0.00	0.00	493.4	Landing Point 640'FSL & 650'FWL
9	6574.9	90.65	52.99	6125.2	377.8	359.5	2.00	0.95	515.7	
10	7553.3	90.65	52.99	6114.2	966.6	1140.8	0.00	0.00	1493.9	WP1
11	7592.6	89.86	52.99	6114.0	990.3	1172.2	2.00	-179.34	1533.3	
12	8553.8	89.86	52.99	6116.4	1568.9	1939.7	0.00	0.00	2494.3	WP2
13	8559.3	89.97	52.99	6116.4	1572.3	1944.1	2.00	-0.09	2499.9	
14	9554.2	89.97	52.99	6116.9	2171.2	2738.5	0.00	0.00	3494.7	WP3
15	9569.6	89.66	52.99	6117.0	2180.5	2750.8	2.00	179.94	3510.1	
16	10554.7	89.66	52.99	6122.8	2773.5	3537.4	0.00	0.00	4495.0	WP4
17	10566.4	89.90	52.99	6122.8	2780.5	3546.7	2.00	-0.09	4506.7	
18	11555.2	89.90	52.99	6124.6	3375.8	4336.3	0.00	0.00	5495.4	WP5
19	11576.1	89.48	52.99	6124.7	3388.4	4352.9	2.00	179.08	5516.3	
20	11649.1	89.48	52.99	6125.4	3432.3	4411.3	0.00	0.00	5589.3	BHL 1550'FNL & 680'FEL



Vertical Section at 52.11° (650 ft/in)

BHL 1550'FNL & 680'FEL



Surface Location: Waves 2H

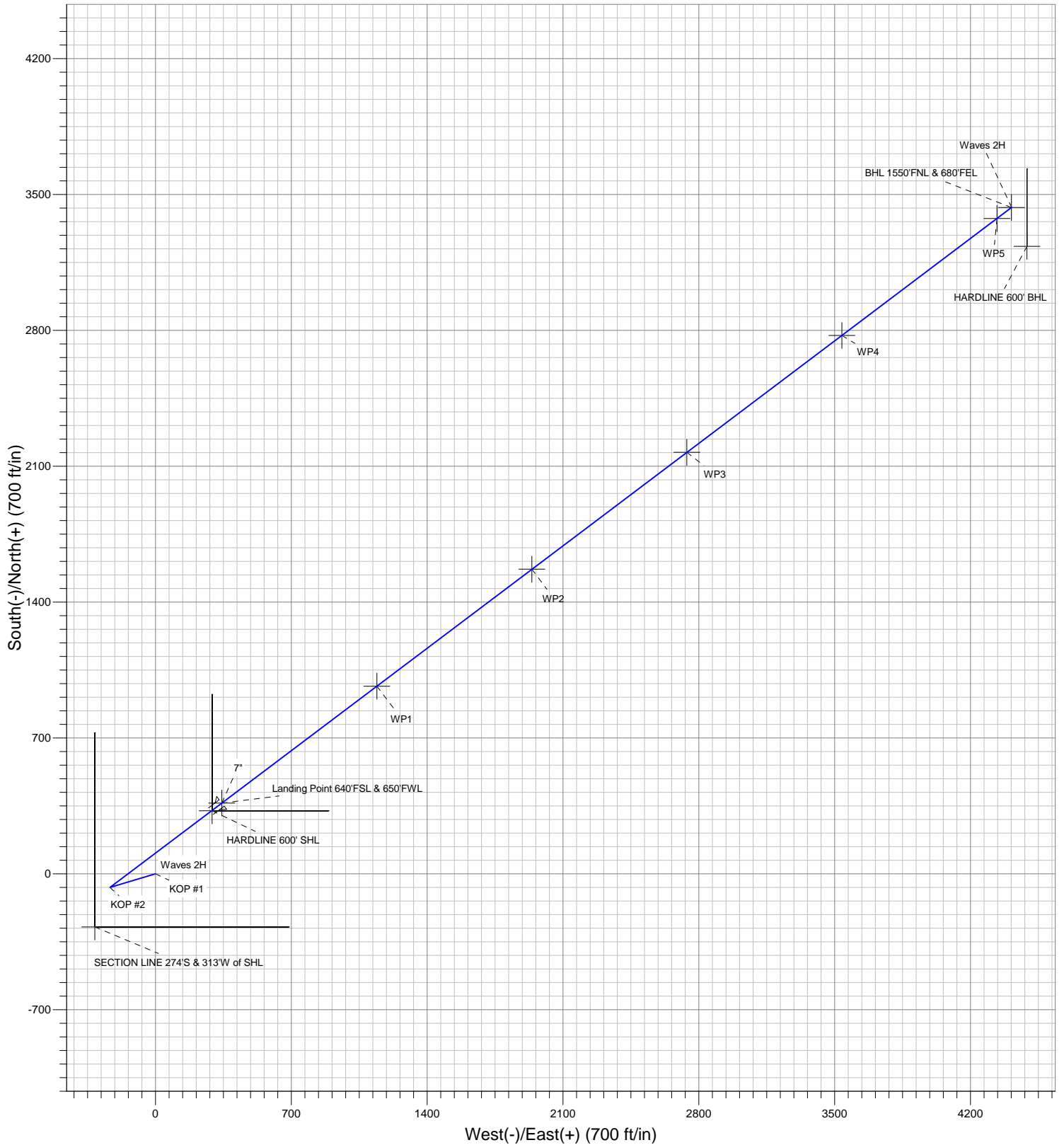
Waves 2H Pad Sec. 18-T7N-R59W

North American Datum 1983 , US State Plane 1983 , Colorado Northern Zone

Ground Elevation: 4887.0

+N/-S	+E/-W	Northing	Easting	Latitude	Longitude	Slot
0.0	0.0	1453420.19	3408283.51	40.568750	-104.030320	

Design Version: Plan #1 (9-19-12)





Condor Energy, Weld County, CO

SEC.18-T7N-R59W

Waves 2H Pad Sec.18-T7N-R59W

Waves 2H

Wellbore #1

Plan: Plan #1 (9-19-12)

Standard Planning Report

24 September, 2012

Database:	Landmark	Local Co-ordinate Reference:	Well Waves 2H
Company:	Condor Energy, Weld County, CO	TVD Reference:	WELL @ 4900.0ft (RKB - 13')
Project:	SEC.18-T7N-R59W	MD Reference:	WELL @ 4900.0ft (RKB - 13')
Site:	Waves 2H Pad Sec.18-T7N-R59W	North Reference:	True
Well:	Waves 2H	Survey Calculation Method:	Minimum Curvature
Wellbore:	Wellbore #1		
Design:	Plan #1 (9-19-12)		

Project	SEC.18-T7N-R59W, Weld County, CO		
Map System:	US State Plane 1983	System Datum:	Mean Sea Level
Geo Datum:	North American Datum 1983		Using Well Reference Point
Map Zone:	Colorado Northern Zone		Using geodetic scale factor

Site	Waves 2H Pad Sec.18-T7N-R59W				
Site Position:		Northing:	1,453,420.20 ft	Latitude:	40.568750
From:	Lat/Long	Easting:	3,408,283.51 ft	Longitude:	-104.030320
Position Uncertainty:	0.0 ft	Slot Radius:	"	Grid Convergence:	0.95 °

Well	Waves 2H					
Well Position	+N-S	0.0 ft	Northing:	1,453,420.19 ft	Latitude:	40.568750
	+E-W	0.0 ft	Easting:	3,408,283.51 ft	Longitude:	-104.030320
Position Uncertainty		0.0 ft	Wellhead Elevation:	ft	Ground Level:	4,887.0 ft

Wellbore	Wellbore #1				
Magnetics	Model Name	Sample Date	Declination (°)	Dip Angle (°)	Field Strength (nT)
	IGRF2010	9/19/2012	8.31	67.26	53,162

Design	Plan #1 (9-19-12)			
Audit Notes:				
Version:	Phase:	PROTOTYPE	Tie On Depth:	0.0
Vertical Section:	Depth From (TVD) (ft)	+N-S (ft)	+E-W (ft)	Direction (°)
	0.0	0.0	0.0	52.11

Database:	Landmark	Local Co-ordinate Reference:	Well Waves 2H
Company:	Condor Energy, Weld County, CO	TVD Reference:	WELL @ 4900.0ft (RKB - 13')
Project:	SEC.18-T7N-R59W	MD Reference:	WELL @ 4900.0ft (RKB - 13')
Site:	Waves 2H Pad Sec.18-T7N-R59W	North Reference:	True
Well:	Waves 2H	Survey Calculation Method:	Minimum Curvature
Wellbore:	Wellbore #1		
Design:	Plan #1 (9-19-12)		

Plan Sections										
Measured Depth (ft)	Inclination (°)	Azimuth (°)	Vertical Depth (ft)	+N/-S (ft)	+E/-W (ft)	Dogleg Rate (°/100ft)	Build Rate (°/100ft)	Turn Rate (°/100ft)	TFO (°)	Target
0.0	0.00	0.00	0.0	0.0	0.0	0.00	0.00	0.00	0.00	
2,700.0	0.00	0.00	2,700.0	0.0	0.0	0.00	0.00	0.00	0.00	
3,364.0	6.64	253.37	3,362.5	-11.0	-36.8	1.00	1.00	0.00	253.37	
4,981.1	6.64	253.37	4,968.7	-64.5	-216.0	0.00	0.00	0.00	0.00	
5,313.1	0.00	0.00	5,300.0	-70.0	-234.4	2.00	-2.00	0.00	180.00	
5,422.3	0.00	0.00	5,409.2	-70.0	-234.4	0.00	0.00	0.00	0.00	
6,549.8	90.20	52.99	6,125.4	362.7	339.5	8.00	8.00	0.00	52.99	
6,552.6	90.20	52.99	6,125.4	364.3	341.7	0.00	0.00	0.00	0.00	Landing Point 640°F
6,574.9	90.65	52.99	6,125.2	377.8	359.5	2.00	2.00	0.03	0.95	
7,553.3	90.65	52.99	6,114.2	966.6	1,140.8	0.00	0.00	0.00	0.00	WP1
7,592.6	89.86	52.99	6,114.0	990.3	1,172.2	2.00	-2.00	-0.02	-179.34	
8,553.8	89.86	52.99	6,116.4	1,568.9	1,939.7	0.00	0.00	0.00	0.00	WP2
8,559.3	89.97	52.99	6,116.4	1,572.3	1,944.1	2.00	2.00	0.00	-0.09	
9,554.2	89.97	52.99	6,116.9	2,171.2	2,738.5	0.00	0.00	0.00	0.00	WP3
9,569.6	89.66	52.99	6,117.0	2,180.5	2,750.8	2.00	-2.00	0.00	179.94	
10,554.7	89.66	52.99	6,122.8	2,773.5	3,537.4	0.00	0.00	0.00	0.00	WP4
10,566.4	89.90	52.99	6,122.8	2,780.5	3,546.7	2.00	2.00	0.00	-0.09	
11,555.2	89.90	52.99	6,124.6	3,375.8	4,336.3	0.00	0.00	0.00	0.00	WP5
11,576.1	89.48	52.99	6,124.7	3,388.4	4,352.9	2.00	-2.00	0.03	179.08	
11,649.1	89.48	52.99	6,125.4	3,432.3	4,411.3	0.00	0.00	0.00	0.00	BHL 1550'FNL & 6E

Database:	Landmark	Local Co-ordinate Reference:	Well Waves 2H
Company:	Condor Energy, Weld County, CO	TVD Reference:	WELL @ 4900.0ft (RKB - 13')
Project:	SEC.18-T7N-R59W	MD Reference:	WELL @ 4900.0ft (RKB - 13')
Site:	Waves 2H Pad Sec.18-T7N-R59W	North Reference:	True
Well:	Waves 2H	Survey Calculation Method:	Minimum Curvature
Wellbore:	Wellbore #1		
Design:	Plan #1 (9-19-12)		

Planned Survey

Measured Depth (ft)	Inclination (°)	Azimuth (°)	Vertical Depth (ft)	+N-S (ft)	+E-W (ft)	Vertical Section (ft)	Dogleg Rate (°/100ft)	Build Rate (°/100ft)	Turn Rate (°/100ft)
0.0	0.00	0.00	0.0	0.0	0.0	0.0	0.00	0.00	0.00
1.0	0.00	0.00	1.0	0.0	0.0	0.0	0.00	0.00	0.00
HARDLINE 600' BHL - SECTION LINE 274'S & 313'W of SHL - HARDLINE 600' SHL									
40.0	0.00	0.00	40.0	0.0	0.0	0.0	0.00	0.00	0.00
80.0	0.00	0.00	80.0	0.0	0.0	0.0	0.00	0.00	0.00
120.0	0.00	0.00	120.0	0.0	0.0	0.0	0.00	0.00	0.00
160.0	0.00	0.00	160.0	0.0	0.0	0.0	0.00	0.00	0.00
200.0	0.00	0.00	200.0	0.0	0.0	0.0	0.00	0.00	0.00
240.0	0.00	0.00	240.0	0.0	0.0	0.0	0.00	0.00	0.00
280.0	0.00	0.00	280.0	0.0	0.0	0.0	0.00	0.00	0.00
320.0	0.00	0.00	320.0	0.0	0.0	0.0	0.00	0.00	0.00
360.0	0.00	0.00	360.0	0.0	0.0	0.0	0.00	0.00	0.00
400.0	0.00	0.00	400.0	0.0	0.0	0.0	0.00	0.00	0.00
440.0	0.00	0.00	440.0	0.0	0.0	0.0	0.00	0.00	0.00
480.0	0.00	0.00	480.0	0.0	0.0	0.0	0.00	0.00	0.00
520.0	0.00	0.00	520.0	0.0	0.0	0.0	0.00	0.00	0.00
560.0	0.00	0.00	560.0	0.0	0.0	0.0	0.00	0.00	0.00
600.0	0.00	0.00	600.0	0.0	0.0	0.0	0.00	0.00	0.00
640.0	0.00	0.00	640.0	0.0	0.0	0.0	0.00	0.00	0.00
680.0	0.00	0.00	680.0	0.0	0.0	0.0	0.00	0.00	0.00
720.0	0.00	0.00	720.0	0.0	0.0	0.0	0.00	0.00	0.00
760.0	0.00	0.00	760.0	0.0	0.0	0.0	0.00	0.00	0.00
800.0	0.00	0.00	800.0	0.0	0.0	0.0	0.00	0.00	0.00
840.0	0.00	0.00	840.0	0.0	0.0	0.0	0.00	0.00	0.00
880.0	0.00	0.00	880.0	0.0	0.0	0.0	0.00	0.00	0.00
920.0	0.00	0.00	920.0	0.0	0.0	0.0	0.00	0.00	0.00
960.0	0.00	0.00	960.0	0.0	0.0	0.0	0.00	0.00	0.00
1,000.0	0.00	0.00	1,000.0	0.0	0.0	0.0	0.00	0.00	0.00
1,040.0	0.00	0.00	1,040.0	0.0	0.0	0.0	0.00	0.00	0.00
1,080.0	0.00	0.00	1,080.0	0.0	0.0	0.0	0.00	0.00	0.00
1,120.0	0.00	0.00	1,120.0	0.0	0.0	0.0	0.00	0.00	0.00
1,160.0	0.00	0.00	1,160.0	0.0	0.0	0.0	0.00	0.00	0.00
1,200.0	0.00	0.00	1,200.0	0.0	0.0	0.0	0.00	0.00	0.00
1,240.0	0.00	0.00	1,240.0	0.0	0.0	0.0	0.00	0.00	0.00
1,280.0	0.00	0.00	1,280.0	0.0	0.0	0.0	0.00	0.00	0.00
1,320.0	0.00	0.00	1,320.0	0.0	0.0	0.0	0.00	0.00	0.00
1,360.0	0.00	0.00	1,360.0	0.0	0.0	0.0	0.00	0.00	0.00
1,400.0	0.00	0.00	1,400.0	0.0	0.0	0.0	0.00	0.00	0.00
1,440.0	0.00	0.00	1,440.0	0.0	0.0	0.0	0.00	0.00	0.00
1,480.0	0.00	0.00	1,480.0	0.0	0.0	0.0	0.00	0.00	0.00
1,520.0	0.00	0.00	1,520.0	0.0	0.0	0.0	0.00	0.00	0.00
1,560.0	0.00	0.00	1,560.0	0.0	0.0	0.0	0.00	0.00	0.00
1,600.0	0.00	0.00	1,600.0	0.0	0.0	0.0	0.00	0.00	0.00
1,640.0	0.00	0.00	1,640.0	0.0	0.0	0.0	0.00	0.00	0.00
1,680.0	0.00	0.00	1,680.0	0.0	0.0	0.0	0.00	0.00	0.00
1,720.0	0.00	0.00	1,720.0	0.0	0.0	0.0	0.00	0.00	0.00
1,760.0	0.00	0.00	1,760.0	0.0	0.0	0.0	0.00	0.00	0.00
1,800.0	0.00	0.00	1,800.0	0.0	0.0	0.0	0.00	0.00	0.00
1,840.0	0.00	0.00	1,840.0	0.0	0.0	0.0	0.00	0.00	0.00
1,880.0	0.00	0.00	1,880.0	0.0	0.0	0.0	0.00	0.00	0.00
1,920.0	0.00	0.00	1,920.0	0.0	0.0	0.0	0.00	0.00	0.00
1,960.0	0.00	0.00	1,960.0	0.0	0.0	0.0	0.00	0.00	0.00
2,000.0	0.00	0.00	2,000.0	0.0	0.0	0.0	0.00	0.00	0.00
2,040.0	0.00	0.00	2,040.0	0.0	0.0	0.0	0.00	0.00	0.00

Database:	Landmark	Local Co-ordinate Reference:	Well Waves 2H
Company:	Condor Energy, Weld County, CO	TVD Reference:	WELL @ 4900.0ft (RKB - 13')
Project:	SEC.18-T7N-R59W	MD Reference:	WELL @ 4900.0ft (RKB - 13')
Site:	Waves 2H Pad Sec.18-T7N-R59W	North Reference:	True
Well:	Waves 2H	Survey Calculation Method:	Minimum Curvature
Wellbore:	Wellbore #1		
Design:	Plan #1 (9-19-12)		

Planned Survey									
Measured Depth (ft)	Inclination (°)	Azimuth (°)	Vertical Depth (ft)	+N/-S (ft)	+E/-W (ft)	Vertical Section (ft)	Dogleg Rate (°/100ft)	Build Rate (°/100ft)	Turn Rate (°/100ft)
2,080.0	0.00	0.00	2,080.0	0.0	0.0	0.0	0.00	0.00	0.00
2,120.0	0.00	0.00	2,120.0	0.0	0.0	0.0	0.00	0.00	0.00
2,160.0	0.00	0.00	2,160.0	0.0	0.0	0.0	0.00	0.00	0.00
2,200.0	0.00	0.00	2,200.0	0.0	0.0	0.0	0.00	0.00	0.00
2,240.0	0.00	0.00	2,240.0	0.0	0.0	0.0	0.00	0.00	0.00
2,280.0	0.00	0.00	2,280.0	0.0	0.0	0.0	0.00	0.00	0.00
2,320.0	0.00	0.00	2,320.0	0.0	0.0	0.0	0.00	0.00	0.00
2,360.0	0.00	0.00	2,360.0	0.0	0.0	0.0	0.00	0.00	0.00
2,400.0	0.00	0.00	2,400.0	0.0	0.0	0.0	0.00	0.00	0.00
2,440.0	0.00	0.00	2,440.0	0.0	0.0	0.0	0.00	0.00	0.00
2,480.0	0.00	0.00	2,480.0	0.0	0.0	0.0	0.00	0.00	0.00
2,520.0	0.00	0.00	2,520.0	0.0	0.0	0.0	0.00	0.00	0.00
2,560.0	0.00	0.00	2,560.0	0.0	0.0	0.0	0.00	0.00	0.00
2,600.0	0.00	0.00	2,600.0	0.0	0.0	0.0	0.00	0.00	0.00
2,640.0	0.00	0.00	2,640.0	0.0	0.0	0.0	0.00	0.00	0.00
2,680.0	0.00	0.00	2,680.0	0.0	0.0	0.0	0.00	0.00	0.00
2,700.0	0.00	0.00	2,700.0	0.0	0.0	0.0	0.00	0.00	0.00
KOP #1									
2,720.0	0.20	253.37	2,720.0	0.0	0.0	0.0	1.00	1.00	0.00
2,760.0	0.60	253.37	2,760.0	-0.1	-0.3	-0.3	1.00	1.00	0.00
2,800.0	1.00	253.37	2,800.0	-0.2	-0.8	-0.8	1.00	1.00	0.00
2,840.0	1.40	253.37	2,840.0	-0.5	-1.6	-1.6	1.00	1.00	0.00
2,880.0	1.80	253.37	2,880.0	-0.8	-2.7	-2.6	1.00	1.00	0.00
2,920.0	2.20	253.37	2,919.9	-1.2	-4.0	-3.9	1.00	1.00	0.00
2,960.0	2.60	253.37	2,959.9	-1.7	-5.7	-5.5	1.00	1.00	0.00
3,000.0	3.00	253.37	2,999.9	-2.2	-7.5	-7.3	1.00	1.00	0.00
3,040.0	3.40	253.37	3,039.8	-2.9	-9.7	-9.4	1.00	1.00	0.00
3,080.0	3.80	253.37	3,079.7	-3.6	-12.1	-11.7	1.00	1.00	0.00
3,120.0	4.20	253.37	3,119.6	-4.4	-14.7	-14.3	1.00	1.00	0.00
3,160.0	4.60	253.37	3,159.5	-5.3	-17.7	-17.2	1.00	1.00	0.00
3,200.0	5.00	253.37	3,199.4	-6.2	-20.9	-20.3	1.00	1.00	0.00
3,240.0	5.40	253.37	3,239.2	-7.3	-24.4	-23.7	1.00	1.00	0.00
3,280.0	5.80	253.37	3,279.0	-8.4	-28.1	-27.3	1.00	1.00	0.00
3,320.0	6.20	253.37	3,318.8	-9.6	-32.1	-31.2	1.00	1.00	0.00
3,360.0	6.60	253.37	3,358.5	-10.9	-36.4	-35.4	1.00	1.00	0.00
3,364.0	6.64	253.37	3,362.5	-11.0	-36.8	-35.8	1.00	1.00	0.00
3,400.0	6.64	253.37	3,398.3	-12.2	-40.8	-39.7	0.00	0.00	0.00
3,440.0	6.64	253.37	3,438.0	-13.5	-45.2	-44.0	0.00	0.00	0.00
3,480.0	6.64	253.37	3,477.7	-14.8	-49.7	-48.3	0.00	0.00	0.00
3,520.0	6.64	253.37	3,517.5	-16.2	-54.1	-52.6	0.00	0.00	0.00
3,560.0	6.64	253.37	3,557.2	-17.5	-58.5	-56.9	0.00	0.00	0.00
3,600.0	6.64	253.37	3,596.9	-18.8	-63.0	-61.2	0.00	0.00	0.00
3,640.0	6.64	253.37	3,636.7	-20.1	-67.4	-65.6	0.00	0.00	0.00
3,680.0	6.64	253.37	3,676.4	-21.5	-71.8	-69.9	0.00	0.00	0.00
3,720.0	6.64	253.37	3,716.1	-22.8	-76.3	-74.2	0.00	0.00	0.00
3,760.0	6.64	253.37	3,755.9	-24.1	-80.7	-78.5	0.00	0.00	0.00
3,800.0	6.64	253.37	3,795.6	-25.4	-85.1	-82.8	0.00	0.00	0.00
3,840.0	6.64	253.37	3,835.3	-26.7	-89.6	-87.1	0.00	0.00	0.00
3,880.0	6.64	253.37	3,875.1	-28.1	-94.0	-91.4	0.00	0.00	0.00
3,920.0	6.64	253.37	3,914.8	-29.4	-98.4	-95.7	0.00	0.00	0.00
3,960.0	6.64	253.37	3,954.5	-30.7	-102.9	-100.0	0.00	0.00	0.00
4,000.0	6.64	253.37	3,994.2	-32.0	-107.3	-104.4	0.00	0.00	0.00
4,040.0	6.64	253.37	4,034.0	-33.4	-111.7	-108.7	0.00	0.00	0.00

Database:	Landmark	Local Co-ordinate Reference:	Well Waves 2H
Company:	Condor Energy, Weld County, CO	TVD Reference:	WELL @ 4900.0ft (RKB - 13')
Project:	SEC.18-T7N-R59W	MD Reference:	WELL @ 4900.0ft (RKB - 13')
Site:	Waves 2H Pad Sec.18-T7N-R59W	North Reference:	True
Well:	Waves 2H	Survey Calculation Method:	Minimum Curvature
Wellbore:	Wellbore #1		
Design:	Plan #1 (9-19-12)		

Planned Survey									
Measured Depth (ft)	Inclination (°)	Azimuth (°)	Vertical Depth (ft)	+N/-S (ft)	+E/-W (ft)	Vertical Section (ft)	Dogleg Rate (°/100ft)	Build Rate (°/100ft)	Turn Rate (°/100ft)
4,080.0	6.64	253.37	4,073.7	-34.7	-116.2	-113.0	0.00	0.00	0.00
4,120.0	6.64	253.37	4,113.4	-36.0	-120.6	-117.3	0.00	0.00	0.00
4,160.0	6.64	253.37	4,153.2	-37.3	-125.0	-121.6	0.00	0.00	0.00
4,200.0	6.64	253.37	4,192.9	-38.7	-129.4	-125.9	0.00	0.00	0.00
4,240.0	6.64	253.37	4,232.6	-40.0	-133.9	-130.2	0.00	0.00	0.00
4,280.0	6.64	253.37	4,272.4	-41.3	-138.3	-134.5	0.00	0.00	0.00
4,320.0	6.64	253.37	4,312.1	-42.6	-142.7	-138.8	0.00	0.00	0.00
4,360.0	6.64	253.37	4,351.8	-44.0	-147.2	-143.1	0.00	0.00	0.00
4,400.0	6.64	253.37	4,391.6	-45.3	-151.6	-147.5	0.00	0.00	0.00
4,440.0	6.64	253.37	4,431.3	-46.6	-156.0	-151.8	0.00	0.00	0.00
4,480.0	6.64	253.37	4,471.0	-47.9	-160.5	-156.1	0.00	0.00	0.00
4,520.0	6.64	253.37	4,510.8	-49.2	-164.9	-160.4	0.00	0.00	0.00
4,560.0	6.64	253.37	4,550.5	-50.6	-169.3	-164.7	0.00	0.00	0.00
4,600.0	6.64	253.37	4,590.2	-51.9	-173.8	-169.0	0.00	0.00	0.00
4,640.0	6.64	253.37	4,630.0	-53.2	-178.2	-173.3	0.00	0.00	0.00
4,680.0	6.64	253.37	4,669.7	-54.5	-182.6	-177.6	0.00	0.00	0.00
4,720.0	6.64	253.37	4,709.4	-55.9	-187.1	-181.9	0.00	0.00	0.00
4,760.0	6.64	253.37	4,749.2	-57.2	-191.5	-186.3	0.00	0.00	0.00
4,800.0	6.64	253.37	4,788.9	-58.5	-195.9	-190.6	0.00	0.00	0.00
4,840.0	6.64	253.37	4,828.6	-59.8	-200.4	-194.9	0.00	0.00	0.00
4,880.0	6.64	253.37	4,868.3	-61.2	-204.8	-199.2	0.00	0.00	0.00
4,920.0	6.64	253.37	4,908.1	-62.5	-209.2	-203.5	0.00	0.00	0.00
4,960.0	6.64	253.37	4,947.8	-63.8	-213.7	-207.8	0.00	0.00	0.00
4,981.1	6.64	253.37	4,968.7	-64.5	-216.0	-210.1	0.00	0.00	0.00
5,000.0	6.26	253.37	4,987.5	-65.1	-218.0	-212.1	2.00	-2.00	0.00
5,040.0	5.46	253.37	5,027.3	-66.3	-221.9	-215.9	2.00	-2.00	0.00
5,080.0	4.66	253.37	5,067.2	-67.3	-225.3	-219.2	2.00	-2.00	0.00
5,120.0	3.86	253.37	5,107.1	-68.1	-228.2	-221.9	2.00	-2.00	0.00
5,160.0	3.06	253.37	5,147.0	-68.8	-230.5	-224.2	2.00	-2.00	0.00
5,200.0	2.26	253.37	5,187.0	-69.4	-232.3	-225.9	2.00	-2.00	0.00
5,240.0	1.46	253.37	5,226.9	-69.7	-233.5	-227.1	2.00	-2.00	0.00
5,280.0	0.66	253.37	5,266.9	-69.9	-234.2	-227.8	2.00	-2.00	0.00
5,313.1	0.00	0.00	5,300.0	-70.0	-234.4	-228.0	2.00	-2.00	0.00
5,320.0	0.00	0.00	5,306.9	-70.0	-234.4	-228.0	0.00	0.00	0.00
5,360.0	0.00	0.00	5,346.9	-70.0	-234.4	-228.0	0.00	0.00	0.00
5,400.0	0.00	0.00	5,386.9	-70.0	-234.4	-228.0	0.00	0.00	0.00
5,422.3	0.00	0.00	5,409.2	-70.0	-234.4	-228.0	0.00	0.00	0.00
KOP #2									
5,440.0	1.42	52.99	5,426.9	-69.9	-234.2	-227.8	8.01	8.01	0.00
5,480.0	4.62	52.99	5,466.9	-68.6	-232.5	-225.7	8.00	8.00	0.00
5,520.0	7.82	52.99	5,506.6	-66.0	-229.1	-221.3	8.00	8.00	0.00
5,560.0	11.02	52.99	5,546.1	-62.1	-223.9	-214.8	8.00	8.00	0.00
5,600.0	14.22	52.99	5,585.1	-56.8	-216.9	-206.0	8.00	8.00	0.00
5,640.0	17.42	52.99	5,623.6	-50.2	-208.2	-195.1	8.00	8.00	0.00
5,680.0	20.62	52.99	5,661.4	-42.4	-197.8	-182.1	8.00	8.00	0.00
5,720.0	23.82	52.99	5,698.4	-33.3	-185.7	-167.0	8.00	8.00	0.00
5,760.0	27.02	52.99	5,734.5	-22.9	-172.0	-149.8	8.00	8.00	0.00
5,800.0	30.22	52.99	5,769.7	-11.4	-156.7	-130.7	8.00	8.00	0.00
5,840.0	33.42	52.99	5,803.6	1.3	-139.9	-109.6	8.00	8.00	0.00
5,880.0	36.62	52.99	5,836.4	15.1	-121.5	-86.6	8.00	8.00	0.00
5,920.0	39.82	52.99	5,867.8	30.0	-101.8	-61.9	8.00	8.00	0.00
5,960.0	43.02	52.99	5,897.8	45.9	-80.6	-35.5	8.00	8.00	0.00
6,000.0	46.22	52.99	5,926.3	62.8	-58.2	-7.4	8.00	8.00	0.00
6,040.0	49.42	52.99	5,953.1	80.7	-34.5	22.3	8.00	8.00	0.00

Database:	Landmark	Local Co-ordinate Reference:	Well Waves 2H
Company:	Condor Energy, Weld County, CO	TVD Reference:	WELL @ 4900.0ft (RKB - 13')
Project:	SEC.18-T7N-R59W	MD Reference:	WELL @ 4900.0ft (RKB - 13')
Site:	Waves 2H Pad Sec.18-T7N-R59W	North Reference:	True
Well:	Waves 2H	Survey Calculation Method:	Minimum Curvature
Wellbore:	Wellbore #1		
Design:	Plan #1 (9-19-12)		

Planned Survey										
Measured Depth (ft)	Inclination (°)	Azimuth (°)	Vertical Depth (ft)	+N/-S (ft)	+E/-W (ft)	Vertical Section (ft)	Dogleg Rate (°/100ft)	Build Rate (°/100ft)	Turn Rate (°/100ft)	
6,080.0	52.62	52.99	5,978.3	99.4	-9.7	53.4	8.00	8.00	0.00	
6,120.0	55.82	52.99	6,001.7	118.9	16.2	85.8	8.00	8.00	0.00	
6,160.0	59.02	52.99	6,023.2	139.2	43.1	119.5	8.00	8.00	0.00	
6,200.0	62.22	52.99	6,042.8	160.2	70.9	154.3	8.00	8.00	0.00	
6,240.0	65.42	52.99	6,060.5	181.8	99.6	190.2	8.00	8.00	0.00	
6,280.0	68.62	52.99	6,076.1	204.0	129.0	227.0	8.00	8.00	0.00	
6,320.0	71.82	52.99	6,089.6	226.6	159.0	264.7	8.00	8.00	0.00	
6,360.0	75.02	52.99	6,101.1	249.7	189.6	303.0	8.00	8.00	0.00	
6,400.0	78.22	52.99	6,110.3	273.1	220.7	341.9	8.00	8.00	0.00	
6,440.0	81.42	52.99	6,117.4	296.8	252.1	381.3	8.00	8.00	0.00	
6,480.0	84.62	52.99	6,122.2	320.7	283.8	421.0	8.00	8.00	0.00	
6,520.0	87.82	52.99	6,124.9	344.7	315.7	460.9	8.00	8.00	0.00	
6,549.8	90.20	52.99	6,125.4	362.7	339.5	490.6	8.00	8.00	0.00	
6,552.6	90.20	52.99	6,125.4	364.3	341.7	493.4	0.00	0.00	0.00	
7" - Landing Point 640'FSL & 650'FWL										
6,560.0	90.35	52.99	6,125.4	368.8	347.6	500.8	2.00	2.00	0.03	
6,574.9	90.65	52.99	6,125.2	377.8	359.5	515.7	2.00	2.00	0.03	
6,600.0	90.65	52.99	6,124.9	392.9	379.6	540.8	0.00	0.00	0.00	
6,640.0	90.65	52.99	6,124.5	417.0	411.5	580.8	0.00	0.00	0.00	
6,680.0	90.65	52.99	6,124.0	441.0	443.5	620.8	0.00	0.00	0.00	
6,720.0	90.65	52.99	6,123.6	465.1	475.4	660.8	0.00	0.00	0.00	
6,760.0	90.65	52.99	6,123.1	489.2	507.3	700.8	0.00	0.00	0.00	
6,800.0	90.65	52.99	6,122.7	513.2	539.3	740.8	0.00	0.00	0.00	
6,840.0	90.65	52.99	6,122.2	537.3	571.2	780.8	0.00	0.00	0.00	
6,880.0	90.65	52.99	6,121.8	561.4	603.2	820.8	0.00	0.00	0.00	
6,920.0	90.65	52.99	6,121.3	585.5	635.1	860.8	0.00	0.00	0.00	
6,960.0	90.65	52.99	6,120.9	609.5	667.1	900.8	0.00	0.00	0.00	
7,000.0	90.65	52.99	6,120.4	633.6	699.0	940.8	0.00	0.00	0.00	
7,040.0	90.65	52.99	6,120.0	657.7	730.9	980.8	0.00	0.00	0.00	
7,080.0	90.65	52.99	6,119.5	681.8	762.9	1,020.8	0.00	0.00	0.00	
7,120.0	90.65	52.99	6,119.1	705.8	794.8	1,060.7	0.00	0.00	0.00	
7,160.0	90.65	52.99	6,118.6	729.9	826.8	1,100.7	0.00	0.00	0.00	
7,200.0	90.65	52.99	6,118.2	754.0	858.7	1,140.7	0.00	0.00	0.00	
7,240.0	90.65	52.99	6,117.7	778.1	890.6	1,180.7	0.00	0.00	0.00	
7,280.0	90.65	52.99	6,117.3	802.1	922.6	1,220.7	0.00	0.00	0.00	
7,320.0	90.65	52.99	6,116.8	826.2	954.5	1,260.7	0.00	0.00	0.00	
7,360.0	90.65	52.99	6,116.4	850.3	986.5	1,300.7	0.00	0.00	0.00	
7,400.0	90.65	52.99	6,115.9	874.4	1,018.4	1,340.7	0.00	0.00	0.00	
7,440.0	90.65	52.99	6,115.5	898.4	1,050.3	1,380.7	0.00	0.00	0.00	
7,480.0	90.65	52.99	6,115.0	922.5	1,082.3	1,420.7	0.00	0.00	0.00	
7,520.0	90.65	52.99	6,114.6	946.6	1,114.2	1,460.7	0.00	0.00	0.00	
7,553.3	90.65	52.99	6,114.2	966.6	1,140.8	1,493.9	0.00	0.00	0.00	
WP1										
7,560.0	90.51	52.99	6,114.1	970.7	1,146.2	1,500.7	2.00	-2.00	-0.02	
7,592.6	89.86	52.99	6,114.0	990.3	1,172.2	1,533.3	2.00	-2.00	-0.02	
7,600.0	89.86	52.99	6,114.0	994.7	1,178.1	1,540.7	0.00	0.00	0.00	
7,640.0	89.86	52.99	6,114.1	1,018.8	1,210.1	1,580.7	0.00	0.00	0.00	
7,680.0	89.86	52.99	6,114.2	1,042.9	1,242.0	1,620.7	0.00	0.00	0.00	
7,720.0	89.86	52.99	6,114.3	1,067.0	1,273.9	1,660.6	0.00	0.00	0.00	
7,760.0	89.86	52.99	6,114.4	1,091.1	1,305.9	1,700.6	0.00	0.00	0.00	
7,800.0	89.86	52.99	6,114.5	1,115.1	1,337.8	1,740.6	0.00	0.00	0.00	
7,840.0	89.86	52.99	6,114.6	1,139.2	1,369.7	1,780.6	0.00	0.00	0.00	
7,880.0	89.86	52.99	6,114.7	1,163.3	1,401.7	1,820.6	0.00	0.00	0.00	
7,920.0	89.86	52.99	6,114.8	1,187.4	1,433.6	1,860.6	0.00	0.00	0.00	

Database:	Landmark	Local Co-ordinate Reference:	Well Waves 2H
Company:	Condor Energy, Weld County, CO	TVD Reference:	WELL @ 4900.0ft (RKB - 13')
Project:	SEC.18-T7N-R59W	MD Reference:	WELL @ 4900.0ft (RKB - 13')
Site:	Waves 2H Pad Sec.18-T7N-R59W	North Reference:	True
Well:	Waves 2H	Survey Calculation Method:	Minimum Curvature
Wellbore:	Wellbore #1		
Design:	Plan #1 (9-19-12)		

Planned Survey									
Measured Depth (ft)	Inclination (°)	Azimuth (°)	Vertical Depth (ft)	+N/-S (ft)	+E/-W (ft)	Vertical Section (ft)	Dogleg Rate (°/100ft)	Build Rate (°/100ft)	Turn Rate (°/100ft)
7,960.0	89.86	52.99	6,114.9	1,211.5	1,465.6	1,900.6	0.00	0.00	0.00
8,000.0	89.86	52.99	6,115.0	1,235.5	1,497.5	1,940.6	0.00	0.00	0.00
8,040.0	89.86	52.99	6,115.1	1,259.6	1,529.4	1,980.6	0.00	0.00	0.00
8,080.0	89.86	52.99	6,115.2	1,283.7	1,561.4	2,020.6	0.00	0.00	0.00
8,120.0	89.86	52.99	6,115.3	1,307.8	1,593.3	2,060.6	0.00	0.00	0.00
8,160.0	89.86	52.99	6,115.4	1,331.9	1,625.3	2,100.6	0.00	0.00	0.00
8,200.0	89.86	52.99	6,115.5	1,355.9	1,657.2	2,140.6	0.00	0.00	0.00
8,240.0	89.86	52.99	6,115.6	1,380.0	1,689.1	2,180.6	0.00	0.00	0.00
8,280.0	89.86	52.99	6,115.7	1,404.1	1,721.1	2,220.6	0.00	0.00	0.00
8,320.0	89.86	52.99	6,115.8	1,428.2	1,753.0	2,260.6	0.00	0.00	0.00
8,360.0	89.86	52.99	6,115.9	1,452.3	1,785.0	2,300.6	0.00	0.00	0.00
8,400.0	89.86	52.99	6,116.0	1,476.3	1,816.9	2,340.6	0.00	0.00	0.00
8,440.0	89.86	52.99	6,116.1	1,500.4	1,848.8	2,380.6	0.00	0.00	0.00
8,480.0	89.86	52.99	6,116.2	1,524.5	1,880.8	2,420.6	0.00	0.00	0.00
8,520.0	89.86	52.99	6,116.3	1,548.6	1,912.7	2,460.6	0.00	0.00	0.00
8,553.8	89.86	52.99	6,116.4	1,568.9	1,939.7	2,494.3	0.00	0.00	0.00
WP2									
8,559.3	89.97	52.99	6,116.4	1,572.3	1,944.1	2,499.9	2.00	2.00	0.00
8,560.0	89.97	52.99	6,116.4	1,572.7	1,944.7	2,500.5	0.00	0.00	0.00
8,600.0	89.97	52.99	6,116.4	1,596.7	1,976.6	2,540.5	0.00	0.00	0.00
8,640.0	89.97	52.99	6,116.4	1,620.8	2,008.5	2,580.5	0.00	0.00	0.00
8,680.0	89.97	52.99	6,116.5	1,644.9	2,040.5	2,620.5	0.00	0.00	0.00
8,720.0	89.97	52.99	6,116.5	1,669.0	2,072.4	2,660.5	0.00	0.00	0.00
8,760.0	89.97	52.99	6,116.5	1,693.1	2,104.4	2,700.5	0.00	0.00	0.00
8,800.0	89.97	52.99	6,116.5	1,717.1	2,136.3	2,740.5	0.00	0.00	0.00
8,840.0	89.97	52.99	6,116.5	1,741.2	2,168.2	2,780.5	0.00	0.00	0.00
8,880.0	89.97	52.99	6,116.6	1,765.3	2,200.2	2,820.5	0.00	0.00	0.00
8,920.0	89.97	52.99	6,116.6	1,789.4	2,232.1	2,860.5	0.00	0.00	0.00
8,960.0	89.97	52.99	6,116.6	1,813.5	2,264.0	2,900.5	0.00	0.00	0.00
9,000.0	89.97	52.99	6,116.6	1,837.5	2,296.0	2,940.5	0.00	0.00	0.00
9,040.0	89.97	52.99	6,116.6	1,861.6	2,327.9	2,980.5	0.00	0.00	0.00
9,080.0	89.97	52.99	6,116.7	1,885.7	2,359.9	3,020.5	0.00	0.00	0.00
9,120.0	89.97	52.99	6,116.7	1,909.8	2,391.8	3,060.5	0.00	0.00	0.00
9,160.0	89.97	52.99	6,116.7	1,933.9	2,423.7	3,100.5	0.00	0.00	0.00
9,200.0	89.97	52.99	6,116.7	1,958.0	2,455.7	3,140.5	0.00	0.00	0.00
9,240.0	89.97	52.99	6,116.7	1,982.0	2,487.6	3,180.5	0.00	0.00	0.00
9,280.0	89.97	52.99	6,116.8	2,006.1	2,519.6	3,220.5	0.00	0.00	0.00
9,320.0	89.97	52.99	6,116.8	2,030.2	2,551.5	3,260.5	0.00	0.00	0.00
9,360.0	89.97	52.99	6,116.8	2,054.3	2,583.4	3,300.5	0.00	0.00	0.00
9,400.0	89.97	52.99	6,116.8	2,078.4	2,615.4	3,340.5	0.00	0.00	0.00
9,440.0	89.97	52.99	6,116.9	2,102.4	2,647.3	3,380.4	0.00	0.00	0.00
9,480.0	89.97	52.99	6,116.9	2,126.5	2,679.3	3,420.4	0.00	0.00	0.00
9,520.0	89.97	52.99	6,116.9	2,150.6	2,711.2	3,460.4	0.00	0.00	0.00
9,554.2	89.97	52.99	6,116.9	2,174.7	2,738.5	3,494.7	0.00	0.00	0.00
WP3									
9,560.0	89.86	52.99	6,116.9	2,174.7	2,743.1	3,500.4	2.00	-2.00	0.00
9,569.6	89.66	52.99	6,117.0	2,180.5	2,750.8	3,510.1	2.00	-2.00	0.00
9,600.0	89.66	52.99	6,117.1	2,198.8	2,775.1	3,540.4	0.00	0.00	0.00
9,640.0	89.66	52.99	6,117.4	2,222.8	2,807.0	3,580.4	0.00	0.00	0.00
9,680.0	89.66	52.99	6,117.6	2,246.9	2,839.0	3,620.4	0.00	0.00	0.00
9,720.0	89.66	52.99	6,117.8	2,271.0	2,870.9	3,660.4	0.00	0.00	0.00
9,760.0	89.66	52.99	6,118.1	2,295.1	2,902.8	3,700.4	0.00	0.00	0.00
9,800.0	89.66	52.99	6,118.3	2,319.2	2,934.8	3,740.4	0.00	0.00	0.00

Database:	Landmark	Local Co-ordinate Reference:	Well Waves 2H
Company:	Condor Energy, Weld County, CO	TVD Reference:	WELL @ 4900.0ft (RKB - 13')
Project:	SEC.18-T7N-R59W	MD Reference:	WELL @ 4900.0ft (RKB - 13')
Site:	Waves 2H Pad Sec.18-T7N-R59W	North Reference:	True
Well:	Waves 2H	Survey Calculation Method:	Minimum Curvature
Wellbore:	Wellbore #1		
Design:	Plan #1 (9-19-12)		

Planned Survey										
Measured Depth (ft)	Inclination (°)	Azimuth (°)	Vertical Depth (ft)	+N/-S (ft)	+E/-W (ft)	Vertical Section (ft)	Dogleg Rate (°/100ft)	Build Rate (°/100ft)	Turn Rate (°/100ft)	
9,840.0	89.66	52.99	6,118.6	2,343.2	2,966.7	3,780.4	0.00	0.00	0.00	
9,880.0	89.66	52.99	6,118.8	2,367.3	2,998.7	3,820.4	0.00	0.00	0.00	
9,920.0	89.66	52.99	6,119.0	2,391.4	3,030.6	3,860.4	0.00	0.00	0.00	
9,960.0	89.66	52.99	6,119.3	2,415.5	3,062.5	3,900.4	0.00	0.00	0.00	
10,000.0	89.66	52.99	6,119.5	2,439.6	3,094.5	3,940.4	0.00	0.00	0.00	
10,040.0	89.66	52.99	6,119.7	2,463.6	3,126.4	3,980.4	0.00	0.00	0.00	
10,080.0	89.66	52.99	6,120.0	2,487.7	3,158.3	4,020.4	0.00	0.00	0.00	
10,120.0	89.66	52.99	6,120.2	2,511.8	3,190.3	4,060.4	0.00	0.00	0.00	
10,160.0	89.66	52.99	6,120.4	2,535.9	3,222.2	4,100.4	0.00	0.00	0.00	
10,200.0	89.66	52.99	6,120.7	2,560.0	3,254.2	4,140.3	0.00	0.00	0.00	
10,240.0	89.66	52.99	6,120.9	2,584.0	3,286.1	4,180.3	0.00	0.00	0.00	
10,280.0	89.66	52.99	6,121.1	2,608.1	3,318.0	4,220.3	0.00	0.00	0.00	
10,320.0	89.66	52.99	6,121.4	2,632.2	3,350.0	4,260.3	0.00	0.00	0.00	
10,360.0	89.66	52.99	6,121.6	2,656.3	3,381.9	4,300.3	0.00	0.00	0.00	
10,400.0	89.66	52.99	6,121.8	2,680.4	3,413.9	4,340.3	0.00	0.00	0.00	
10,440.0	89.66	52.99	6,122.1	2,704.4	3,445.8	4,380.3	0.00	0.00	0.00	
10,480.0	89.66	52.99	6,122.3	2,728.5	3,477.7	4,420.3	0.00	0.00	0.00	
10,520.0	89.66	52.99	6,122.6	2,752.6	3,509.7	4,460.3	0.00	0.00	0.00	
10,554.7	89.66	52.99	6,122.8	2,773.5	3,537.4	4,495.0	0.00	0.00	0.00	
WP4										
10,560.0	89.77	52.99	6,122.8	2,776.7	3,541.6	4,500.3	2.00	2.00	0.00	
10,566.4	89.90	52.99	6,122.8	2,780.5	3,546.7	4,506.7	2.00	2.00	0.00	
10,600.0	89.90	52.99	6,122.9	2,800.8	3,573.6	4,540.3	0.00	0.00	0.00	
10,640.0	89.90	52.99	6,122.9	2,824.8	3,605.5	4,580.3	0.00	0.00	0.00	
10,680.0	89.90	52.99	6,123.0	2,848.9	3,637.4	4,620.3	0.00	0.00	0.00	
10,720.0	89.90	52.99	6,123.1	2,873.0	3,669.4	4,660.3	0.00	0.00	0.00	
10,760.0	89.90	52.99	6,123.2	2,897.1	3,701.3	4,700.3	0.00	0.00	0.00	
10,800.0	89.90	52.99	6,123.2	2,921.2	3,733.2	4,740.3	0.00	0.00	0.00	
10,840.0	89.90	52.99	6,123.3	2,945.2	3,765.2	4,780.3	0.00	0.00	0.00	
10,880.0	89.90	52.99	6,123.4	2,969.3	3,797.1	4,820.3	0.00	0.00	0.00	
10,920.0	89.90	52.99	6,123.5	2,993.4	3,829.1	4,860.3	0.00	0.00	0.00	
10,960.0	89.90	52.99	6,123.5	3,017.5	3,861.0	4,900.3	0.00	0.00	0.00	
11,000.0	89.90	52.99	6,123.6	3,041.6	3,892.9	4,940.2	0.00	0.00	0.00	
11,040.0	89.90	52.99	6,123.7	3,065.6	3,924.9	4,980.2	0.00	0.00	0.00	
11,080.0	89.90	52.99	6,123.7	3,089.7	3,956.8	5,020.2	0.00	0.00	0.00	
11,120.0	89.90	52.99	6,123.8	3,113.8	3,988.8	5,060.2	0.00	0.00	0.00	
11,160.0	89.90	52.99	6,123.9	3,137.9	4,020.7	5,100.2	0.00	0.00	0.00	
11,200.0	89.90	52.99	6,124.0	3,162.0	4,052.6	5,140.2	0.00	0.00	0.00	
11,240.0	89.90	52.99	6,124.0	3,186.1	4,084.6	5,180.2	0.00	0.00	0.00	
11,280.0	89.90	52.99	6,124.1	3,210.1	4,116.5	5,220.2	0.00	0.00	0.00	
11,320.0	89.90	52.99	6,124.2	3,234.2	4,148.5	5,260.2	0.00	0.00	0.00	
11,360.0	89.90	52.99	6,124.3	3,258.3	4,180.4	5,300.2	0.00	0.00	0.00	
11,400.0	89.90	52.99	6,124.3	3,282.4	4,212.3	5,340.2	0.00	0.00	0.00	
11,440.0	89.90	52.99	6,124.4	3,306.5	4,244.3	5,380.2	0.00	0.00	0.00	
11,480.0	89.90	52.99	6,124.5	3,330.5	4,276.2	5,420.2	0.00	0.00	0.00	
11,520.0	89.90	52.99	6,124.5	3,354.6	4,308.2	5,460.2	0.00	0.00	0.00	
11,555.2	89.90	52.99	6,124.6	3,375.8	4,336.3	5,495.4	0.00	0.00	0.00	
WP5										
11,560.0	89.80	52.99	6,124.6	3,378.7	4,340.1	5,500.2	2.00	-2.00	0.03	
11,576.1	89.48	52.99	6,124.7	3,388.4	4,352.9	5,516.3	2.00	-2.00	0.03	
11,600.0	89.48	52.99	6,124.9	3,402.8	4,372.0	5,540.2	0.00	0.00	0.00	
11,640.0	89.48	52.99	6,125.3	3,426.8	4,404.0	5,580.2	0.00	0.00	0.00	
11,649.1	89.48	52.99	6,125.4	3,432.3	4,411.3	5,589.3	0.00	0.00	0.00	

Database:	Landmark	Local Co-ordinate Reference:	Well Waves 2H
Company:	Condor Energy, Weld County, CO	TVD Reference:	WELL @ 4900.0ft (RKB - 13')
Project:	SEC.18-T7N-R59W	MD Reference:	WELL @ 4900.0ft (RKB - 13')
Site:	Waves 2H Pad Sec.18-T7N-R59W	North Reference:	True
Well:	Waves 2H	Survey Calculation Method:	Minimum Curvature
Wellbore:	Wellbore #1		
Design:	Plan #1 (9-19-12)		

Planned Survey									
Measured Depth (ft)	Inclination (°)	Azimuth (°)	Vertical Depth (ft)	+N/-S (ft)	+E/-W (ft)	Vertical Section (ft)	Dogleg Rate (°/100ft)	Build Rate (°/100ft)	Turn Rate (°/100ft)
BHL 1550'FNL & 680'FEL									

Targets									
Target Name	Dip Angle (°)	Dip Dir. (°)	TVD (ft)	+N/-S (ft)	+E/-W (ft)	Northing (ft)	Easting (ft)	Latitude	Longitude
WP1 - plan hits target center - Point	0.00	0.00	6,114.2	966.6	1,140.8	1,454,405.54	3,409,408.10	40.571403	-104.026214
HARDLINE 600' BHL - plan misses target center by 5533.5ft at 1.0ft MD (1.0 TVD, 0.0 N, 0.0 E) - Polygon	0.00	0.00	1.0	3,232.3	4,491.3	1,456,726.38	3,412,720.49	40.577621	-104.014152
Point 1			1.0	0.0	0.0	1,456,726.38	3,412,720.49		
Point 2			1.0	400.0	0.0	1,457,126.31	3,412,713.86		
WP3 - plan hits target center - Point	0.00	0.00	6,116.9	2,171.2	2,738.5	1,455,636.41	3,410,985.60	40.574709	-104.020462
SECTION LINE 274'S - plan misses target center by 416.0ft at 1.0ft MD (1.0 TVD, 0.0 N, 0.0 E) - Polygon	0.00	0.00	1.0	-274.0	-313.0	1,453,141.05	3,407,975.10	40.567998	-104.031447
Point 1			1.0	0.0	0.0	1,453,141.05	3,407,975.10		
Point 2			1.0	0.0	1,000.0	1,453,157.62	3,408,974.94		
Point 3			1.0	0.0	0.0	1,453,141.05	3,407,975.10		
Point 4			1.0	1,000.0	0.0	1,454,140.88	3,407,958.53		
BHL 1550'FNL & 680' - plan hits target center - Point	0.00	0.00	6,125.4	3,432.3	4,411.3	1,456,925.05	3,412,637.14	40.578170	-104.014440
WP4 - plan hits target center - Point	0.00	0.00	6,122.8	2,773.5	3,537.4	1,456,251.85	3,411,774.36	40.576362	-104.017586
Landing Point 640'FSI - plan hits target center - Point	0.00	0.00	6,125.4	364.3	341.7	1,453,790.13	3,408,619.14	40.569750	-104.029090
HARDLINE 600' SHL - plan misses target center by 436.2ft at 1.0ft MD (1.0 TVD, 0.0 N, 0.0 E) - Polygon	0.00	0.00	1.0	324.3	291.7	1,453,749.27	3,408,569.79	40.569640	-104.029270
Point 1			1.0	0.0	0.0	1,453,749.27	3,408,569.79		
Point 2			1.0	0.0	600.0	1,453,759.21	3,409,169.69		
Point 3			1.0	0.0	0.0	1,453,749.27	3,408,569.79		
Point 4			1.0	600.0	0.0	1,454,349.17	3,408,559.84		
WP5 - plan hits target center - Point	0.00	0.00	6,124.6	3,375.8	4,336.3	1,456,867.29	3,412,563.10	40.578015	-104.014710
WP2 - plan hits target center - Point	0.00	0.00	6,116.4	1,568.9	1,939.7	1,455,020.97	3,410,196.86	40.573056	-104.023338

Database:	Landmark	Local Co-ordinate Reference:	Well Waves 2H
Company:	Condor Energy, Weld County, CO	TVD Reference:	WELL @ 4900.0ft (RKB - 13')
Project:	SEC.18-T7N-R59W	MD Reference:	WELL @ 4900.0ft (RKB - 13')
Site:	Waves 2H Pad Sec.18-T7N-R59W	North Reference:	True
Well:	Waves 2H	Survey Calculation Method:	Minimum Curvature
Wellbore:	Wellbore #1		
Design:	Plan #1 (9-19-12)		

Casing Points

Measured Depth (ft)	Vertical Depth (ft)	Name	Casing Diameter (")	Hole Diameter (")
6,552.6	6,125.4	7"	7	7-1/2

Plan Annotations

Measured Depth (ft)	Vertical Depth (ft)	Local Coordinates		Comment
		+N/-S (ft)	+E/-W (ft)	
2,700.0	2,700.0	0.0	0.0	KOP #1
5,422.3	5,409.2	-70.0	-234.4	KOP #2