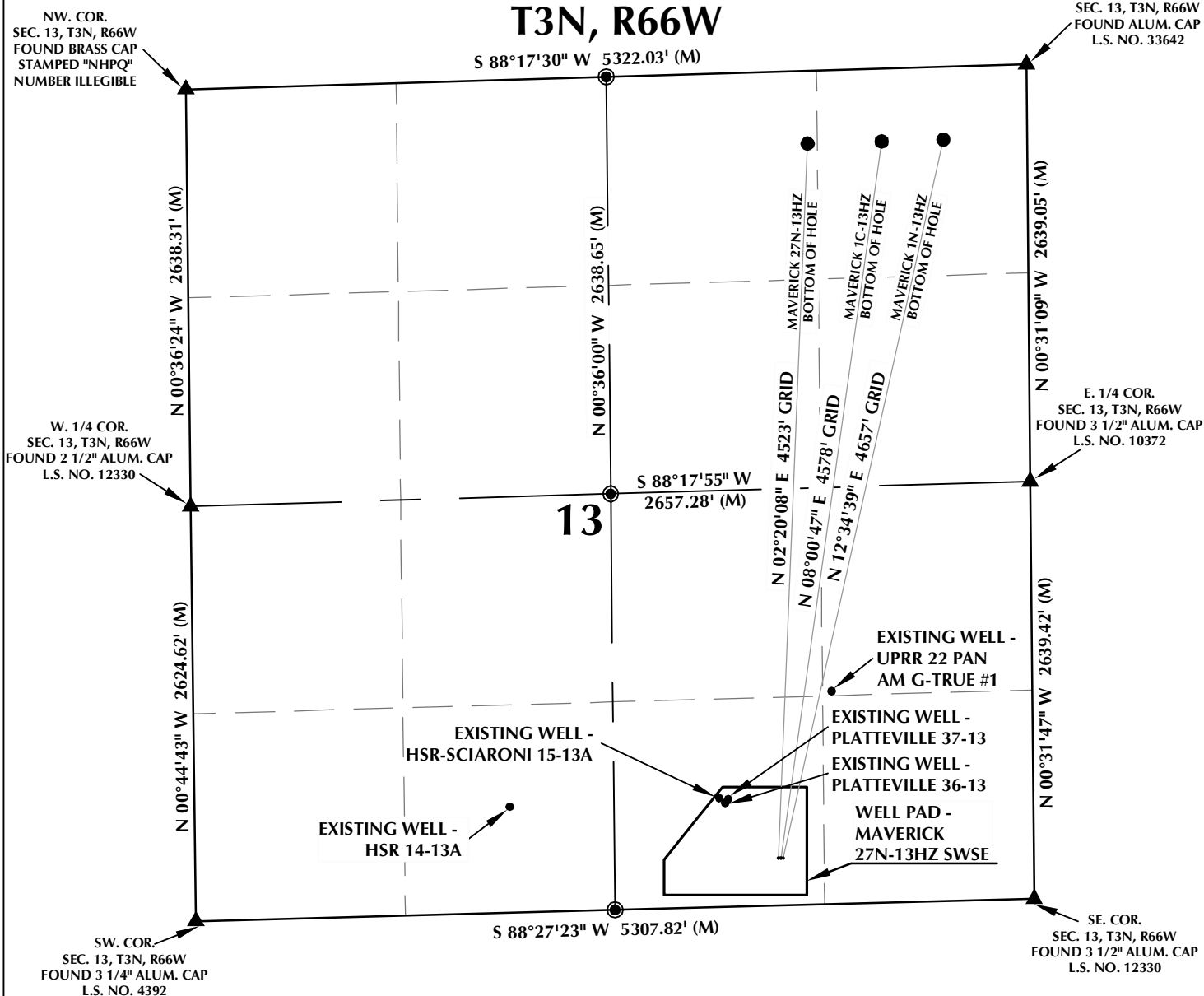


MULTI-WELL PLAN

MAVERICK 27N-13HZ

T3N, R66W



WELL NOTES:

MAVERICK 27N-13HZ
SURFACE: 300' FSL, 1616' FEL
BOTTOM HOLE: 460' FNL, 1390' FEL

MAVERICK 1C-13HZ
SURFACE: 300' FSL, 1601' FEL
BOTTOM HOLE: 460' FNL, 921' FEL

MAVERICK 1N-13HZ
SURFACE: 300' FSL, 1586' FEL
BOTTOM HOLE: 460' FNL, 530' FEL

NOTES:

- ▲ INDICATES FOUND SECTION CORNER
- INDICATES CALCULATED CORNER
- BASIS OF BEARING DERIVED FROM COLORADO COORDINATE SYSTEM 1983 NORTH ZONE UNLESS OTHERWISE NOTED.
- ALL MEASURED DISTANCES ARE GRID.
- COMBINED SCALE FACTOR: .99972118
- WELL FOOTAGES ARE MEASURED AT RIGHT ANGLES TO THE SECTION LINES.

WELL PAD - MAVERICK 27N-13HZ SWSE

INTERFERENCE DIAGRAM
MAVERICK 27N-13HZ,
MAVERICK 1C-13HZ &
MAVERICK 1N-13HZ
LOCATED IN SECTION 13
T3N, R66W, 6TH P.M.
WELD COUNTY, COLORADO

**Kerr-McGee Oil &
Gas Onshore L.P.**
1099 18th Street
Denver, Colorado 80202



CONSULTING, LLC

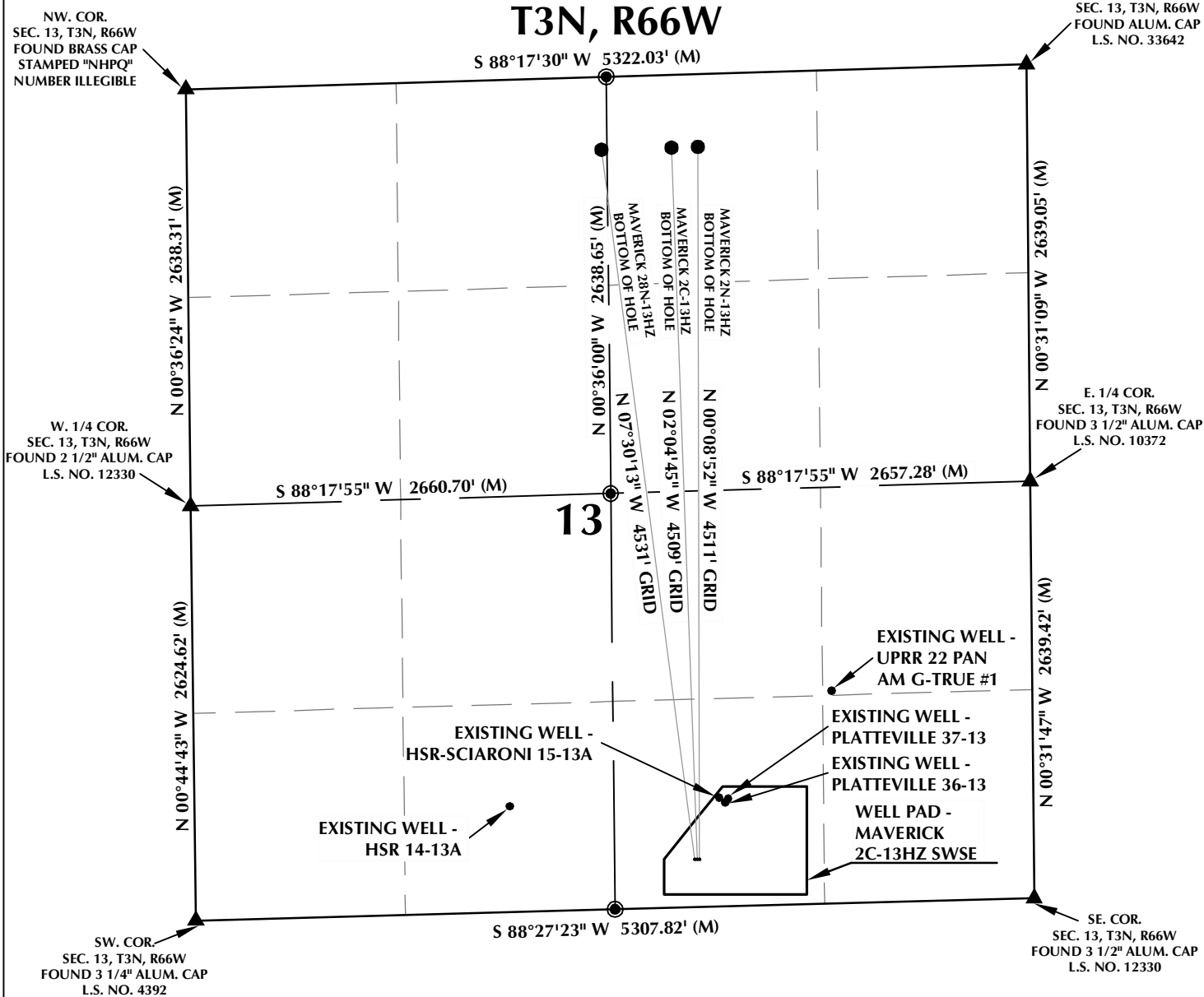
2155 North Main Street
Sheridan, Wyoming 82801
Phone 307-674-0609
Fax 307-674-0182

DRAFTED BY:	APF	CHECKED BY:	BJR
DATE DRAFTED:	5/4/12	DATE SURVEYED:	4/18/12
REVISED:	8/20/12	FILE NAME:	12-29

MULTI-WELL PLAN

MAVERICK 27N-13HZ

T3N, R66W



WELL NOTES:

MAVERICK 28N-13HZ
SURFACE: 303' FSL, 2145' FEL
BOTTOM HOLE: 460' FNL, 2625' FWL
MAVERICK 2C-13HZ
SURFACE: 302' FSL, 2130' FEL
BOTTOM HOLE: 460' FNL, 2252' FEL
MAVERICK 2N-13HZ
SURFACE: 302' FSL, 2115' FEL
BOTTOM HOLE: 460' FNL, 2085' FEL

NOTES:

- ▲ INDICATES FOUND SECTION CORNER
- INDICATES CALCULATED CORNER
- BASIS OF BEARING DERIVED FROM COLORADO COORDINATE SYSTEM 1983 NORTH ZONE UNLESS OTHERWISE NOTED.
- ALL MEASURED DISTANCES ARE GRID.
- COMBINED SCALE FACTOR: .99972118
- WELL FOOTAGES ARE MEASURED AT RIGHT ANGLES TO THE SECTION LINES.



SCALE: 1" = 1000'

WELL PAD - MAVERICK 2C-13HZ SWSE

INTERFERENCE DIAGRAM
MAVERICK 28N-13HZ,
MAVERICK 2C-13HZ &
MAVERICK 2N-13HZ
LOCATED IN SECTION 13
T3N, R66W, 6TH P.M.
WELD COUNTY, COLORADO

**Kerr-McGee Oil &
Gas Onshore L.P.**
1099 18th Street
Denver, Colorado 80202



CONSULTING, LLC

2155 North Main Street
Sheridan, Wyoming 82801
Phone 307-674-0609
Fax 307-674-0182

DRAFTED BY:	APF	CHECKED BY:	BJR
DATE DRAFTED:	5/4/12	DATE SURVEYED:	4/18/12
REVISED:	8/17/12	FILE NAME:	12-29