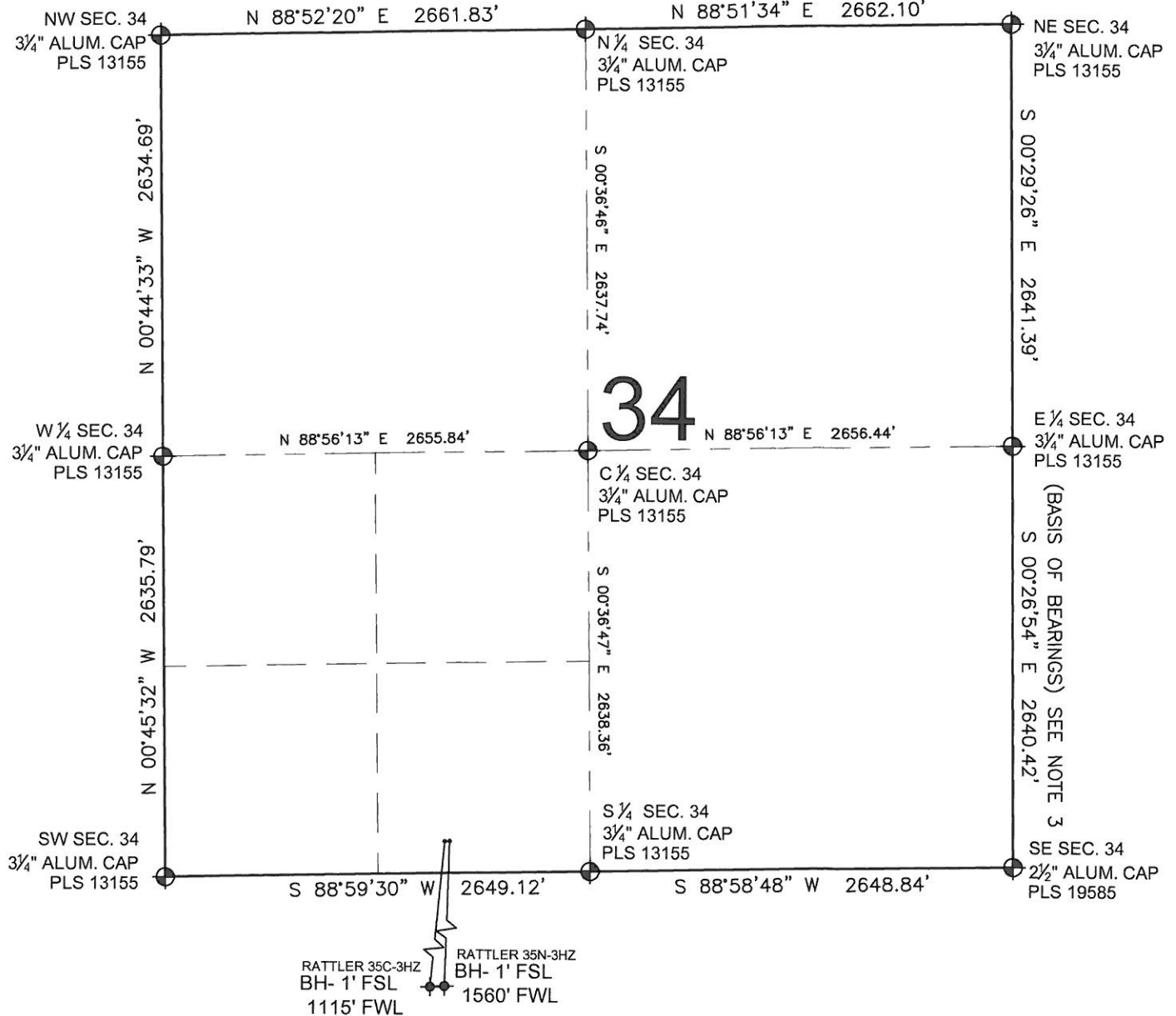


MULTI-WELL PLAN

RATTLER 35N-3HZ

SECTION 34, TOWNSHIP 3 NORTH, RANGE 66 WEST, 6TH P.M.



NOTES:

- THIS FIELD SURVEY CONFORMS TO THE MINIMUM STANDARDS SET BY THE C.O.G.C.C., RULE NO. 215
- HORIZONTAL POSITIONS AND ORTHOMETRIC ELEVATIONS SHOWN AT THE WELL HEAD, ARE BASED ON GPS-RTK POSITIONS DERIVED FROM MINIMUM 2-HOUR STATIC OBSERVATIONS CORRECTED BY THE NATIONAL GEODETIC SURVEY ONLINE POSITIONING USER SERVICE, O.P.U.S. DATUM: HORIZONTAL = NAD83/2007, VERTICAL = NAVD88
- THE BASIS OF BEARINGS ARE STATE PLANE COORDINATE SYSTEM GRID BEARINGS SHOWN HEREON BETWEEN THE DESCRIBED MONUMENTS SHOWN HEREON.
- GRID DISTANCES ARE SHOWN, AS MEASURED IN THE FIELD, WITH TIES TO WELLS MEASURED PERPENDICULAR TO SECTION LINES.

NOTES:

- RATTLER 35C-3HZ TO BE AT 200' FSL, 1747' FWL. BOTTOM HOLE AT 1' FSL & 1115' FWL.
- RATTLER 35N-3HZ TO BE AT 200' FSL, 1777' FWL. BOTTOM HOLE AT 1' FSL & 1560' FWL.

LEGEND

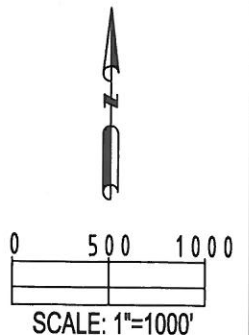
- ⊕ = EXISTING MONUMENT
- ⊙ = PROPOSED WELL
- ⬥ = EXISTING WELL
- ⬥ = BOTTOM HOLE
- ⬥ = BOTTOM HOLE

PREPARED BY:



KERR-MCGEE OIL & GAS ONSHORE LP

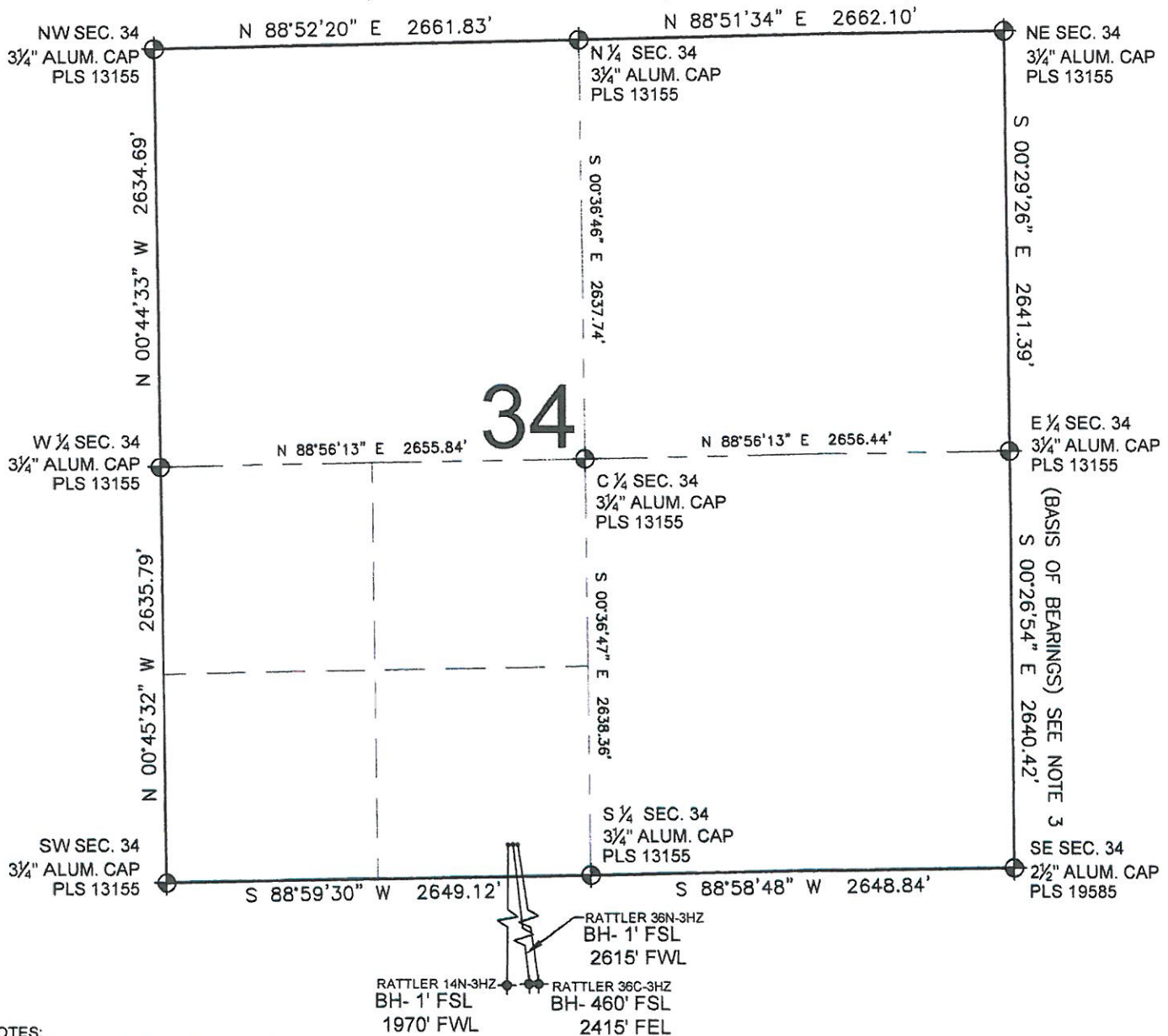
FIELD DATE: 12-01-11	PAD NAME: RATTLER 2 PAD SESW
DRAWING DATE: 10-03-12	SURFACE LOCATION: SE 1/4 SW 1/4, SEC. 34, T3N, R66W, 6TH P.M. WELD COUNTY, COLORADO
BY: SMF	CHECKED: MLP



MULTI-WELL PLAN

RATTLER 35N-3HZ

SECTION 34, TOWNSHIP 3 NORTH, RANGE 66 WEST, 6TH P.M.



NOTES:

1. THIS FIELD SURVEY CONFORMS TO THE MINIMUM STANDARDS SET BY THE C.O.G.C.C., RULE NO. 215
2. HORIZONTAL POSITIONS AND ORTHOMETRIC ELEVATIONS SHOWN AT THE WELL HEAD, ARE BASED ON GPS-RTK POSITIONS DERIVED FROM MINIMUM 2-HOUR STATIC OBSERVATIONS CORRECTED BY THE NATIONAL GEODETIC SURVEY ONLINE POSITIONING USER SERVICE, O.P.U.S. DATUM: HORIZONTAL = NAD83/2007, VERTICAL = NAVD88
3. THE BASIS OF BEARINGS ARE STATE PLANE COORDINATE SYSTEM GRID BEARINGS SHOWN HEREON BETWEEN THE DESCRIBED MONUMENTS SHOWN HEREON.
4. GRID DISTANCES ARE SHOWN, AS MEASURED IN THE FIELD, WITH TIES TO WELLS MEASURED PERPENDICULAR TO SECTION LINES.

NOTES:

- RATTLER 14N-3HZ TO BE AT 200' FSL, 2137' FWL. BOTTOM HOLE AT 1' FSL & 1970' FWL.
- RATTLER 36N-3HZ TO BE AT 200' FSL, 2167' FWL. BOTTOM HOLE AT 1' FSL & 2615' FWL.
- RATTLER 36C-3HZ TO BE AT 200' FSL, 2197' FWL. BOTTOM HOLE AT 460' FSL & 2415' FEL.

LEGEND

- ⊕ = EXISTING MONUMENT
- ⊙ = PROPOSED WELL
- ⬥ = BOTTOM HOLE
- ◆ = EXISTING WELL
- BH = BOTTOM HOLE

PREPARED BY:

PFS
Petroleum Field Services, LLC
1801 W. 13th Ave.
Denver, CO 80204

KERR-MCGEE OIL & GAS ONSHORE LP

FIELD DATE: 12-01-11	PAD NAME: RATTLER 3 PAD
DRAWING DATE: 10-03-12	SURFACE LOCATION: SE 1/4 SW 1/4, SEC. 34, T3N, R66W, 6TH P.M. WELD COUNTY, COLORADO
REV: SMF	CHECKED: MLP

