

# T2N, R64W, 6th P.M.

## GREAT WESTERN OIL & GAS COMPANY

Well location, LAND JG #31-34D, located as shown in LOT 2 of Section 31, T2N, R64W, 6th P.M., Weld County, Colorado.

### BASIS OF ELEVATION

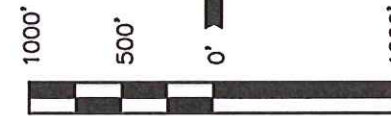
USGS COOPERATIVE BASE NETWORK CONTROL STATION, DESIGNATION 'HUDSON CC' NGS DATA SHEET LISTS THE NAVD 88 ELEVATION AS BEING 4999 FEET.

### BASIS OF BEARINGS

BASIS OF BEARINGS IS A G.P.S. OBSERVATION.

### LINE TABLE

LINE	DIRECTION	LENGTH
L1	S75°48'42"W	938.03'



SCALE

### CERTIFICATE

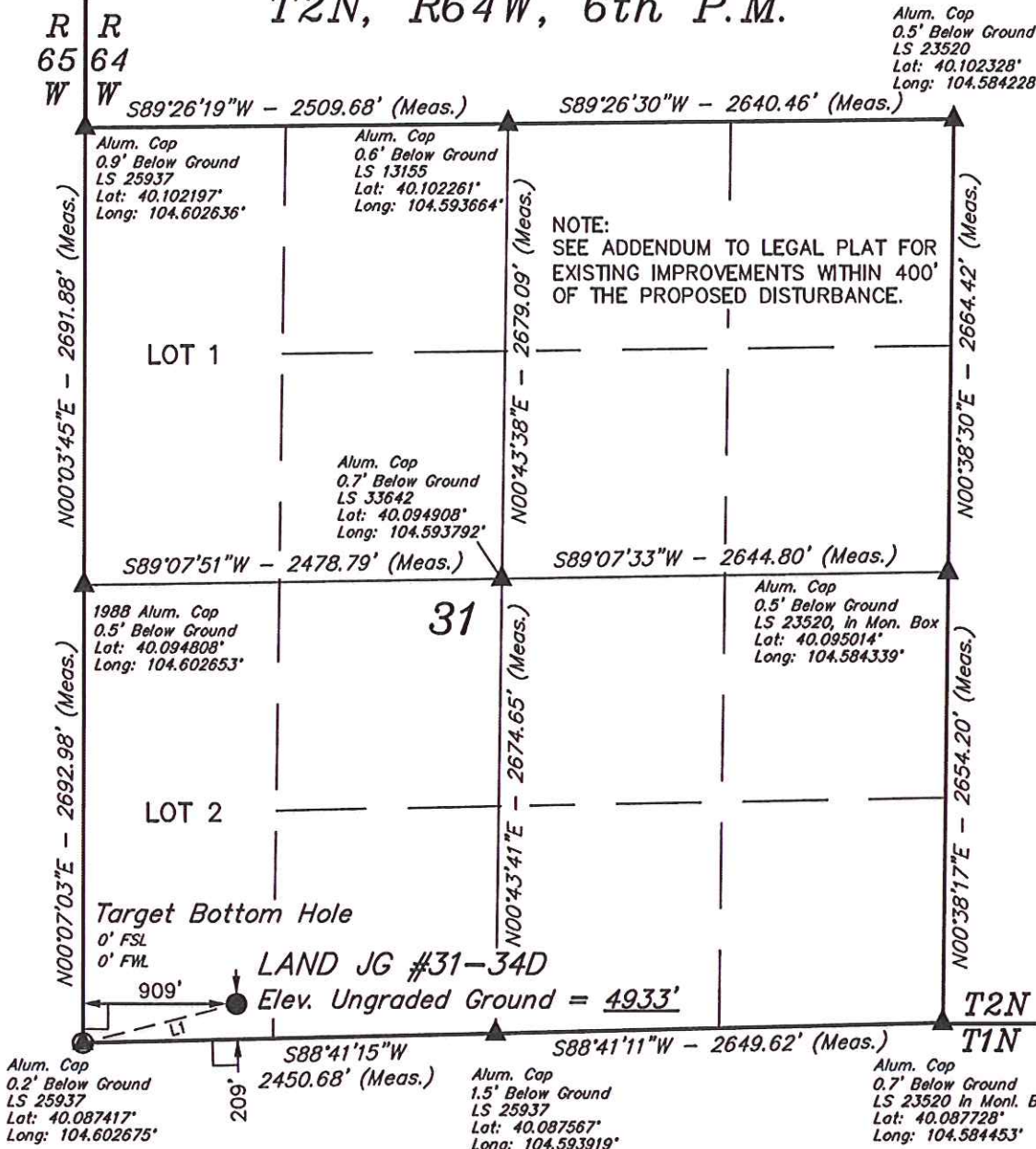
THIS IS TO CERTIFY THAT THE ABOVE PLAT WAS PREPARED FROM FIELD NOTES OF ACTUAL SURVEYS MADE BY ME OR UNDER MY SUPERVISION AND THAT THE SAME ARE TRUE AND CORRECT TO THE BEST OF MY KNOWLEDGE AND BELIEF.

*John A. G. J.W.*  
 REGISTERED LAND SURVEYOR  
 REGISTRATION NO. 17492  
 STATE OF COLORADO  
 08-26-12

### UINTAH ENGINEERING & LAND SURVEYING

85 SOUTH 200 EAST - VERNAL, UTAH 84078

(435) 789-1017



### LEGEND:

- = 90° SYMBOL
- = PROPOSED WELL HEAD.
- = SECTION CORNERS LOCATED.

NAD 83 (TARGET BOTTOM HOLE)		NAD 83 (SURFACE LOCATION)	
LATITUDE = 40°05'14.70"	(40.087417)	LATITUDE = 40°05'16.97"	(40.088047)
LONGITUDE = 104°36'09.63"	(104.602675)	LONGITUDE = 104°35'57.93"	(104.599425)
NAD 27 (TARGET BOTTOM HOLE)		NAD 27 (SURFACE LOCATION)	
LATITUDE = 40°05'14.76"	(40.087433)	LATITUDE = 40°05'17.03"	(40.088064)
LONGITUDE = 104°36'07.77"	(104.602158)	LONGITUDE = 104°35'56.07"	(104.598908)

PDOP = 1.8

SCALE 1" = 1000'	DATE SURVEYED: 10-18-12	DATE DRAWN: 10-22-12
PARTY Z.B. A.G. J.W.	REFERENCES G.L.O. PLAT	
WEATHER COOL	FILE GREAT WESTERN OIL & GAS COMPANY	