

# Encana OIL & GAS (USA) INC.

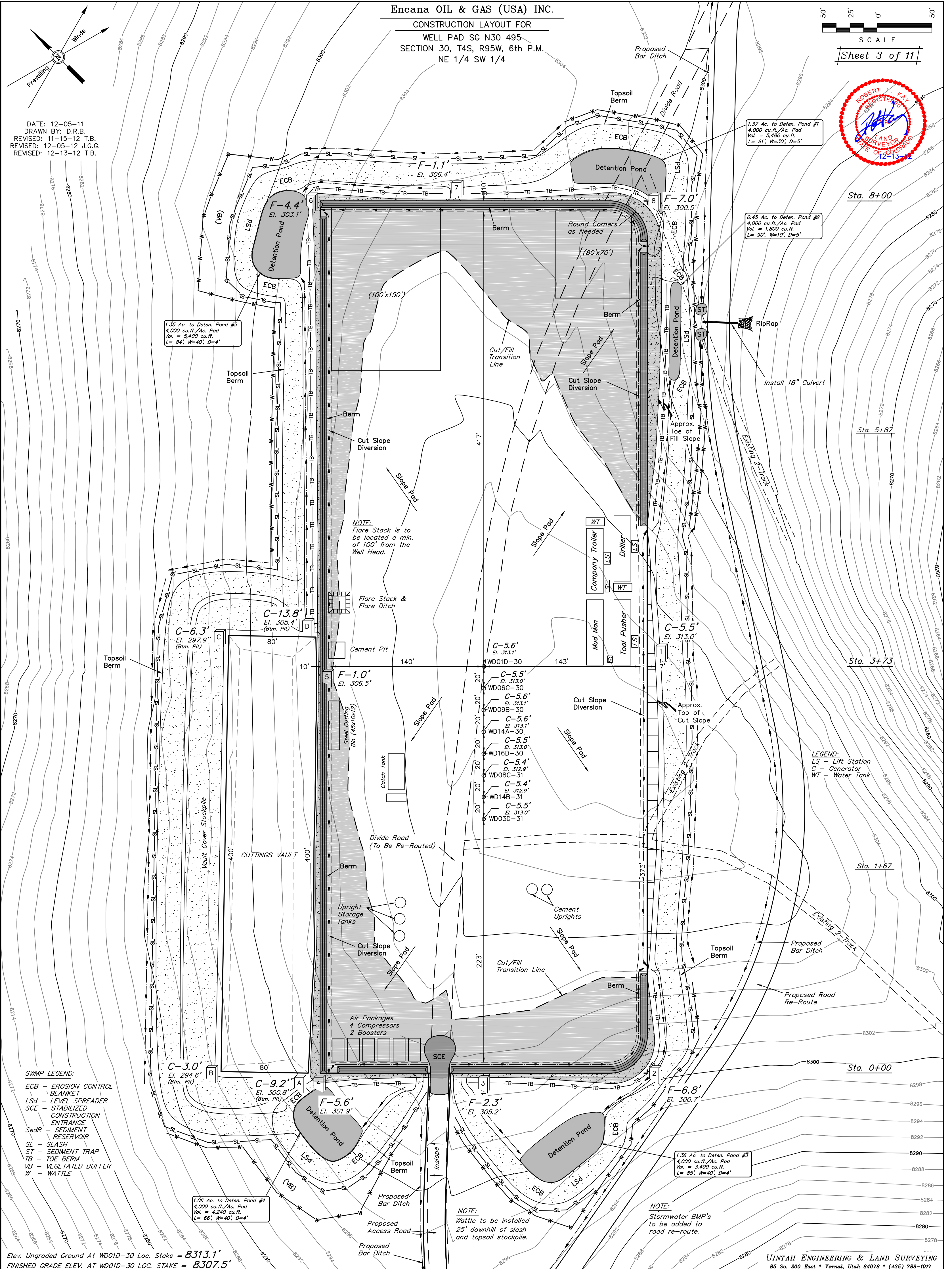
## CONSTRUCTION LAYOUT FOR

WELL PAD SG N30 495  
SECTION 30, T4S, R95W, 6th P.M.  
NE 1/4 SW 1/4

50' 25' 0' 50'  
SCALE  
Sheet 3 of 11



DATE: 12-05-11  
DRAWN BY: D.R.B.  
REVISED: 11-15-12 T.B.  
REVISED: 12-05-12 J.G.G.  
REVISED: 12-13-12 T.B.





\* NOTE:  
FILL QUANTITY INCLUDES  
5% FOR COMPACTION

EXCESS MATERIAL	=	9,220 Cu. Yds.
Topsoil	=	1,220 Cu. Yds.
EXCESS UNBALANCE (After Interim Rehabilitation)	=	8,000 Cu. Yds.



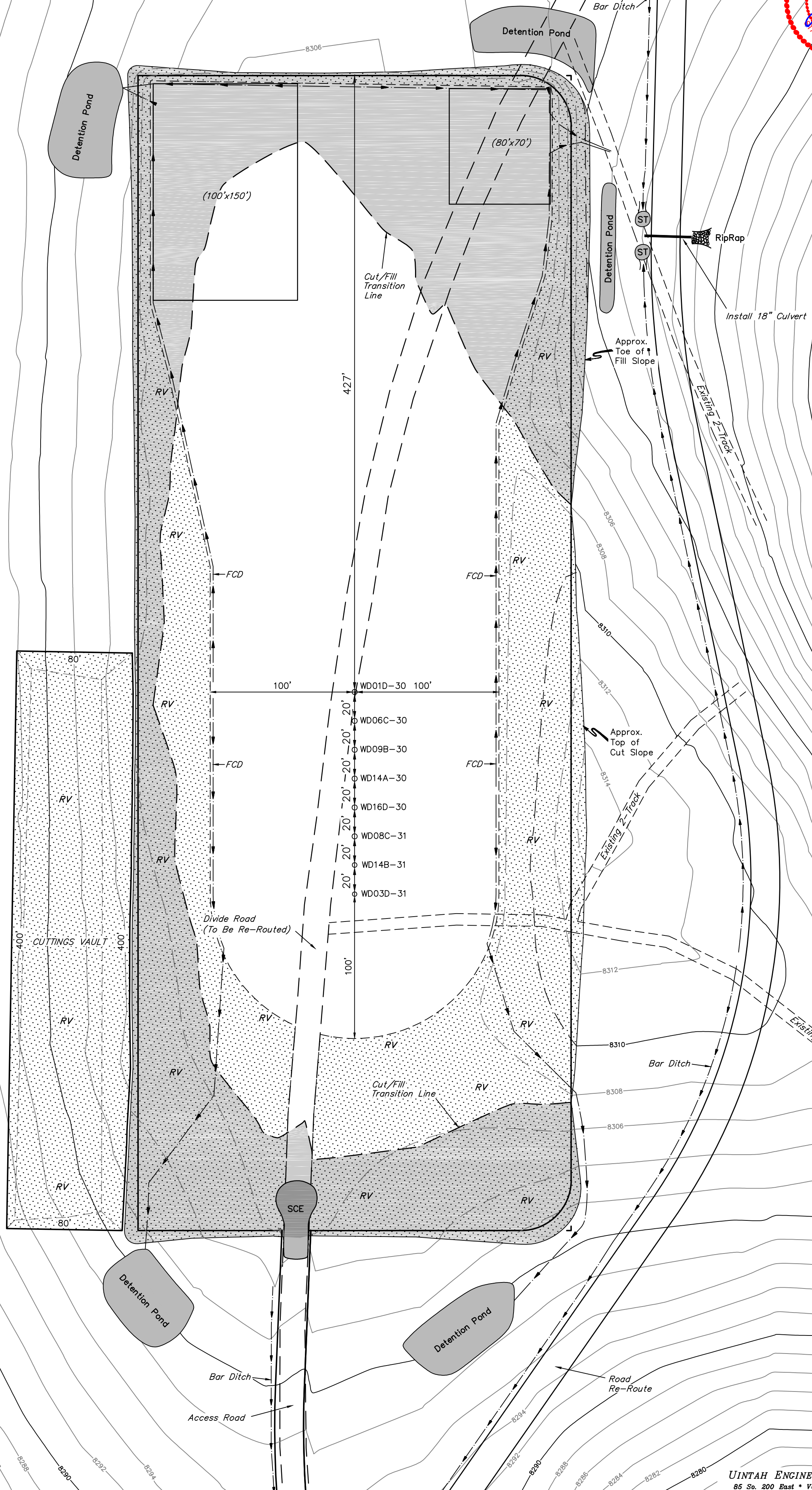
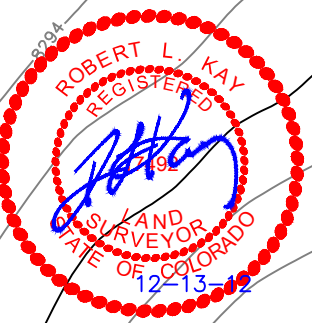
Encana OIL & GAS (USA) INC.

PRODUCTION SCHEMATIC FOR

WELL PAD SG N30 495  
SECTION 30, T4S, R95W, 6th P.M.  
NE 1/4 SW 1/4

50' 25' 0' 50'  
SCALE  
Sheet 6 of 11

DATE: 11-15-12  
DRAWN BY: T.B.  
REVISED: 12-13-12 T.B.



**SWMP LEGEND:**  
SCE - STABILIZED  
CONSTRUCTION  
ENTRANCE  
ST - SEDIMENT TRAP

RECLAIMED AREA

**APPROXIMATE ACREAGES**  
TOTAL RECLAIMED AREA = ± 3.156 ACRES  
UN-RECLAIMED AREA = ± 3.371 ACRES

UINTAH ENGINEERING & LAND SURVEYING  
85 So. 200 East • Vernal, Utah 84078 • (435) 789-1017