



LEGEND:

● PROPOSED LOCATION



Encana OIL & GAS (USA) INC.

WELL PAD SG N30 495

SECTION 30, T4S, R95W, 6th P.M.

NE 1/4 SW 1/4

SHEET 8 OF 11



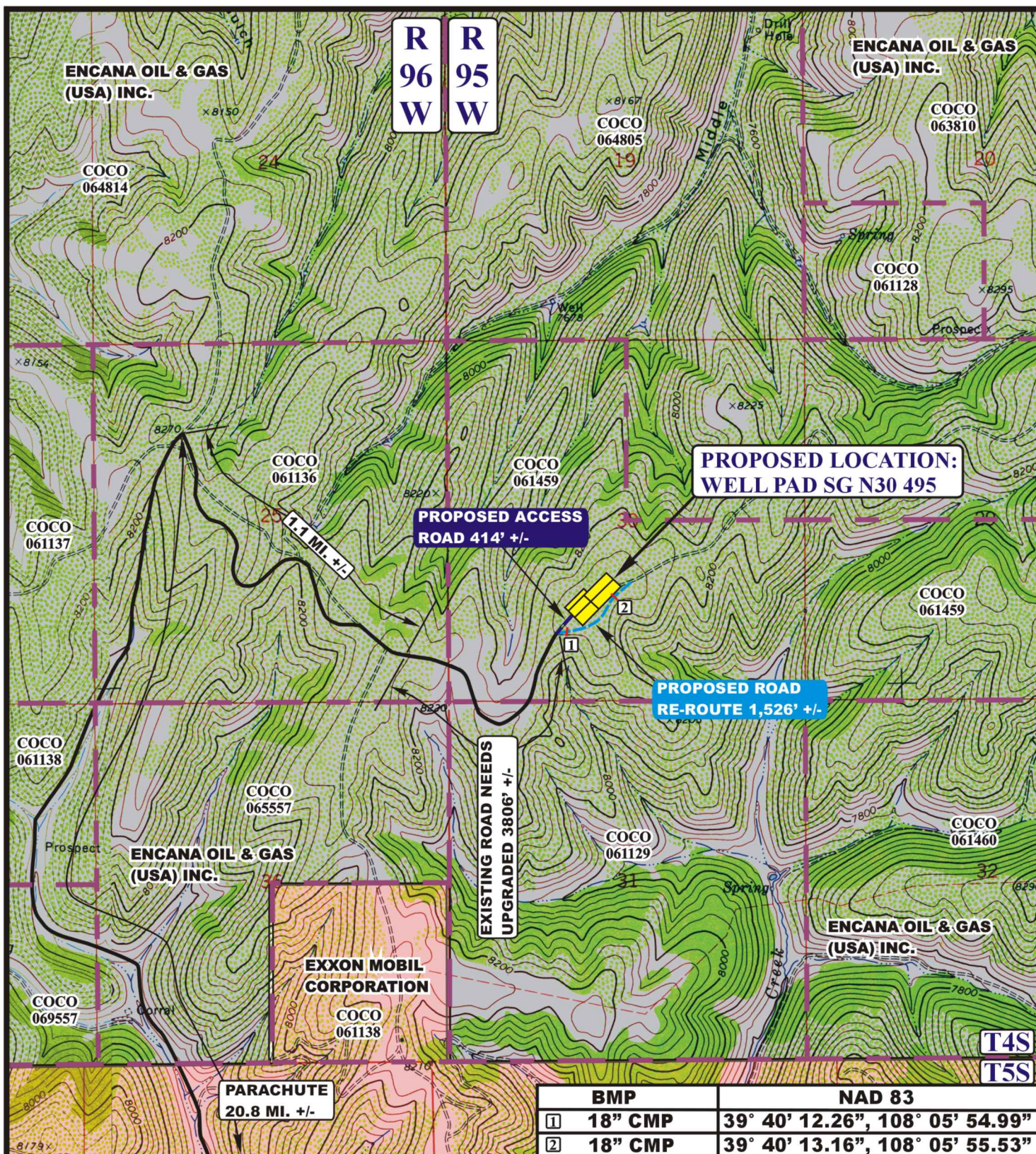
Uintah Engineering & Land Surveying
 85 South 200 East Vernal, Utah 84078
 (435) 789-1017 * FAX (435) 789-1813

ACCESS ROAD
MAP

11 **14** **12**
 MONTH DAY YEAR

SCALE: 1:100,000 DRAWN BY: J.L.G. REVISED: 12-13-12





LEGEND:

----- PROPOSED ACCESS ROAD
 ----- EXISTING ROAD



Encana OIL & GAS (USA) INC.

WELL PAD SG N30 495

SECTION 30, T4S, R95W, 6th P.M.

NE 1/4 SW 1/4

SHEET 9 OF 11



Uintah Engineering & Land Surveying
 85 South 200 East Vernal, Utah 84078
 (435) 789-1017 * FAX (435) 789-1813

**ACCESS ROAD
 MAP**

11 14 12
 MONTH DAY YEAR

SCALE: 1" = 2000' DRAWN BY: J.L.G. REVISED: 12-13-12

**B
 TOPO**

Encana OIL & GAS (USA) INC.
WELL PAD SG N30 495
SECTION 30, T4S, R95W, 6th P.M.

PROCEED IN A NORTHWESTERLY DIRECTION FROM PARACHUTE, COLORADO ALONG COUNTY ROAD 215 APPROXIMATELY 10.8 MILES TO THE JUNCTION OF THIS ROAD AND AN EXISTING ROAD TO THE NORTHWEST; TURN LEFT AND PROCEED IN A NORTHWESTERLY DIRECTION APPROXIMATELY 10.0 MILES TO THE JUNCTION OF THIS ROAD AND AN EXISTING ROAD SOUTHEAST; TURN RIGHT AND PROCEED IN A SOUTHEASTERLY, THEN SOUTHEASTERLY DIRECTION APPROXIMATELY 1.1 MILES TO AN EXISTING ROAD TO THE SOUTHEAST; CONTINUE IN A SOUTHEASTERLY, THEN NORTHEASTERLY DIRECTION APPROXIMATELY 3806' TO THE BEGINNING OF THE PROPOSED ACCESS ROAD TO THE NORTHEAST; FOLLOW ROAD FLAGS IN A NORTHEASTERLY DIRECTION APPROXIMATELY 414' TO THE PROPOSED LOCATION.

TOTAL DISTANCE FROM PARACHUTE, COLORADO TO THE PROPOSED WELL LOCATION IS APPROXIMATELY 22.7 MILES.