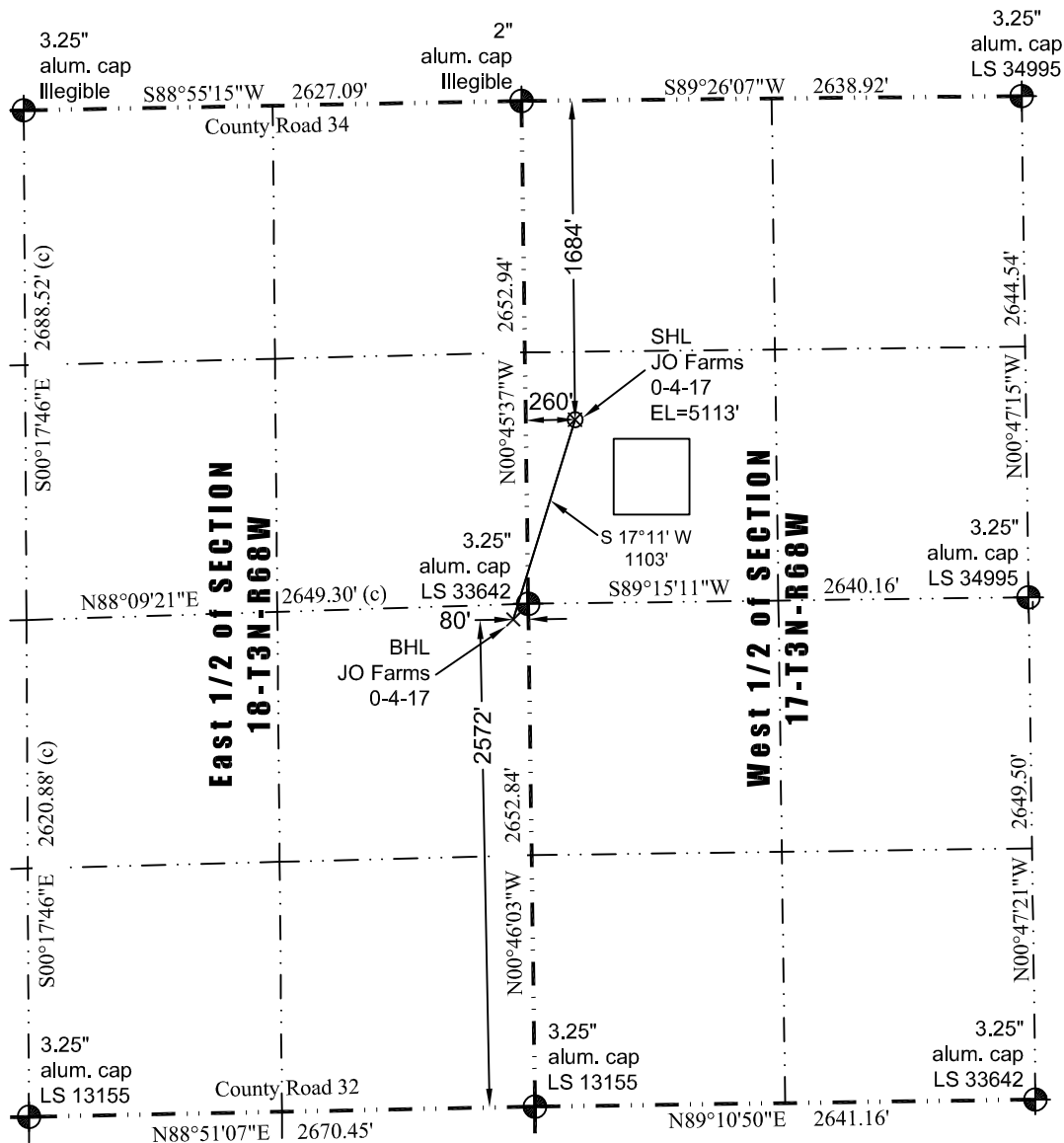


JR Land Surveying, LLC
8114 Northstar Drive
Windsor, Colorado 80528
P. 970-576-4641

WELL LOCATION CERTIFICATE

THIS MAP DOES NOT REPRESENT A BOUNDARY SURVEY



Scale 1" = 1000'
1000'
approximate scale

LEGEND
— found survey monument
(c) — calculated dimension

In accordance with a request from Jay Knutson of EnCana Oil & Gas (USA) Inc., JR Land Surveying, LLC has determined the location of the **JO Farms 0-4-17 well** site to be SHL: 1684' FNL and 260' FWL, (BHL 2572' FSL and 80' FEL), as measured at ninety (90) degrees from the section lines of Sections 17 and 18, Township 3 North, Range 68 West of the 6th Principal Meridian, Weld County Colorado.

Proposed Surface Hole Data:

Latitude: N 40.22836° (BHL: 40.22547°)
Longitude: W 105.03546° (BHL: 105.03664°)
PDOP: 2.0

Nearest:

Building 1,382' southwest	Above Ground Utility 214' west
Public Road 2,191' southwest	Railroad 8,648' southeast
Property Line 260' west	Well Window: SHL is 227' outside
Existing Well: Radio Tower #1, 2,961' northwest	

Notes:

- 1) Bearings and distances based on NAD 83 Colorado North State Plane Coordinates using RTK GPS observations taken 2/29/11 by operator J.R. McGehee.
- 2) Conversion factor to ground (1.000285153).
- 3) Elevations based on NAVD 88 GPS heights and Geoid 2003 corrections.
- 4) See Location Drawing for visible improvements within 400 feet of Pad Site.
- 5) The surface use is a cultivated field.

NOTICE: According to Colorado law you must commence any legal action based upon any defect in this W.L.C. within three years after you first discover such defect. In no event may any action based upon any defect in this W.L.C. be commenced more than ten years from this said date of the certification shown hereon.

I hereby certify that this Well Location Certificate was prepared by me or under my direct supervision on 11/13/2012 for and on behalf of EnCana Oil & Gas (USA) Inc. That it is not a Land Survey Plat or an Improvement Survey Plat and that it is not to be relied upon for establishment of fences, buildings, or other future improvement lines.

John Robert McGehee LS#38219
Well: JO Farms 0-4-17 WLC