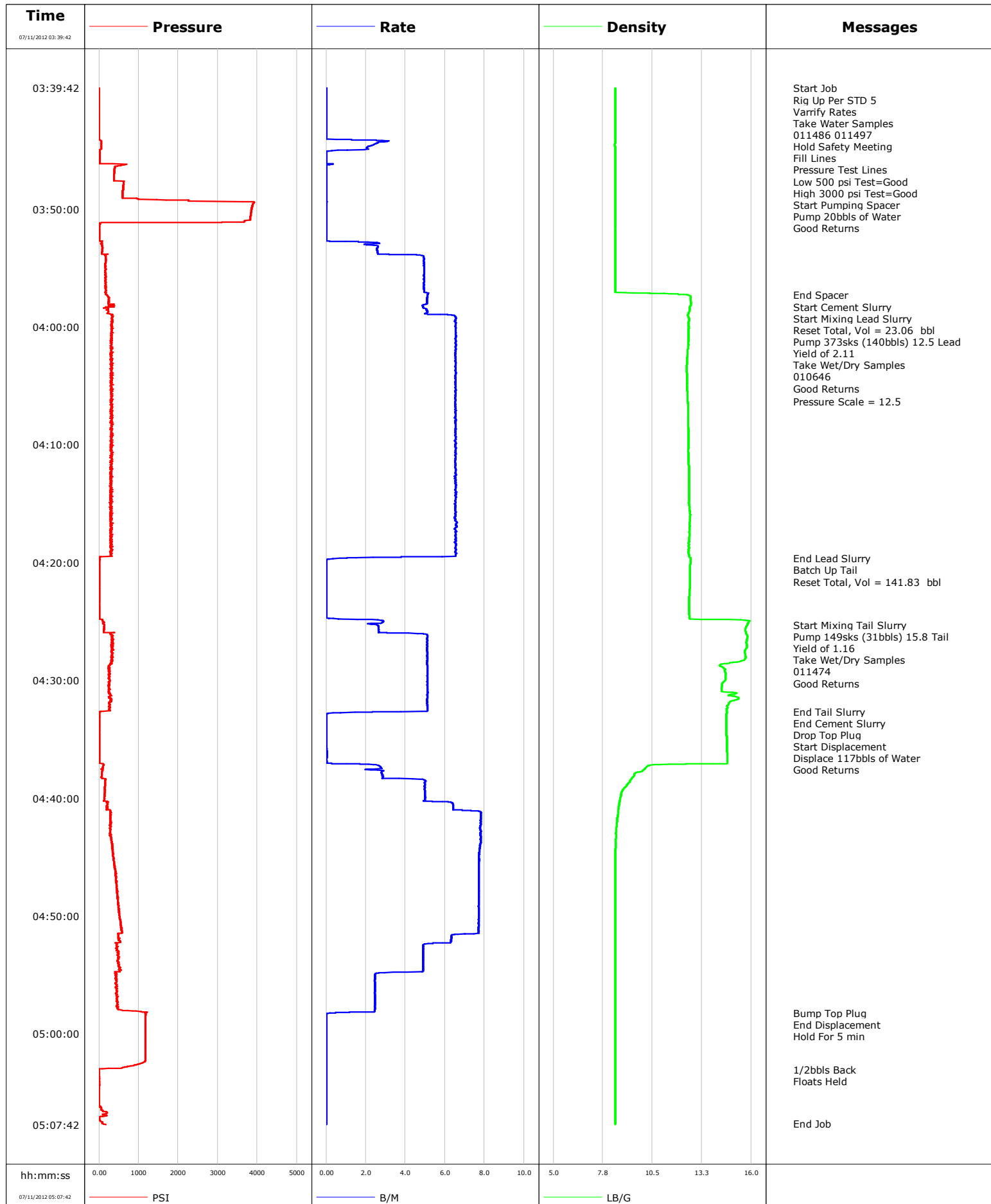


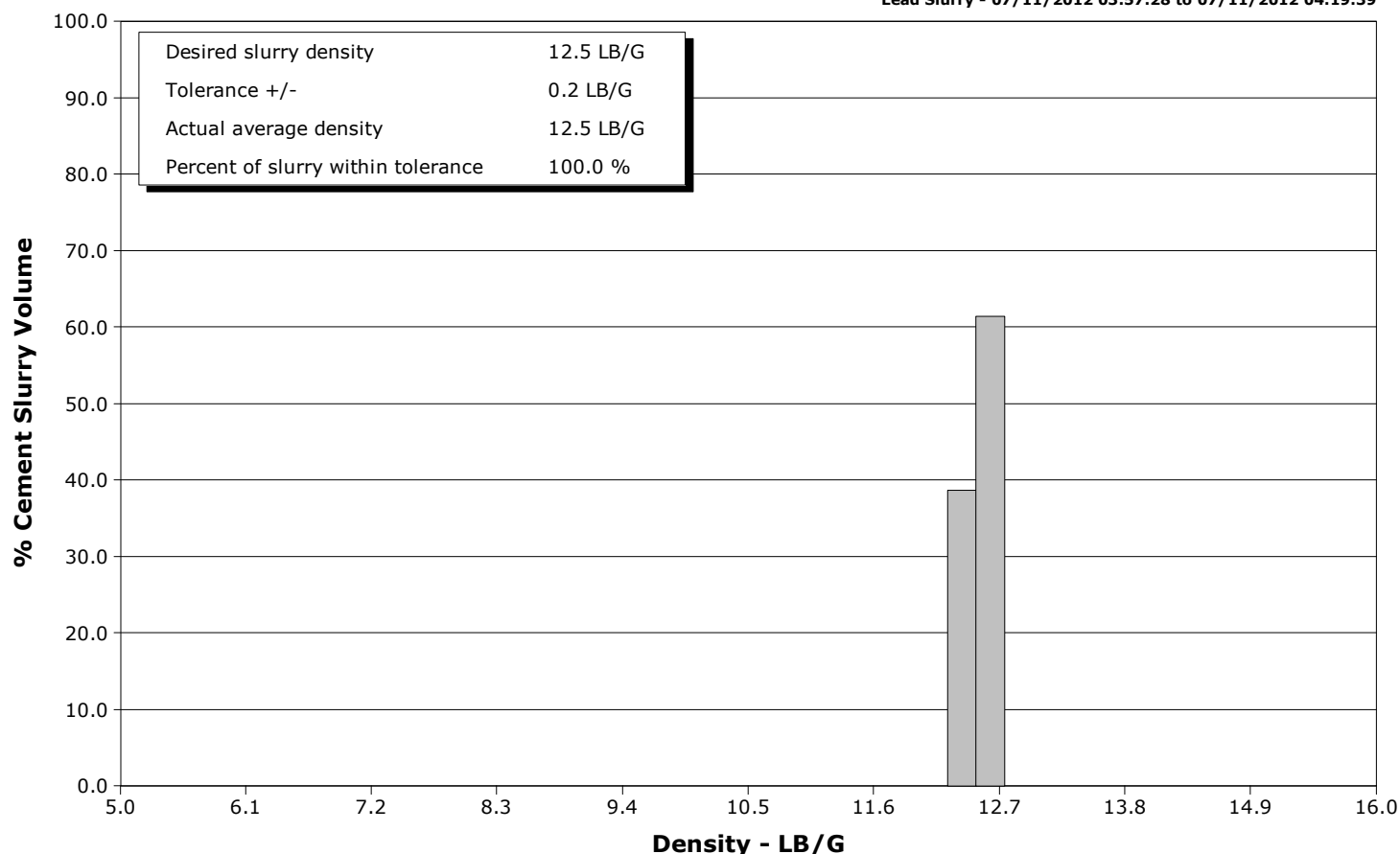
Well	MCU-16-13B	Client	ENCANA
Field	MAMM CREEK	SIR No.	809243
Engineer	Dant Ryan	Job Type	9 5/8 SUFACE
Country	United States	Job Date	07-11-2012



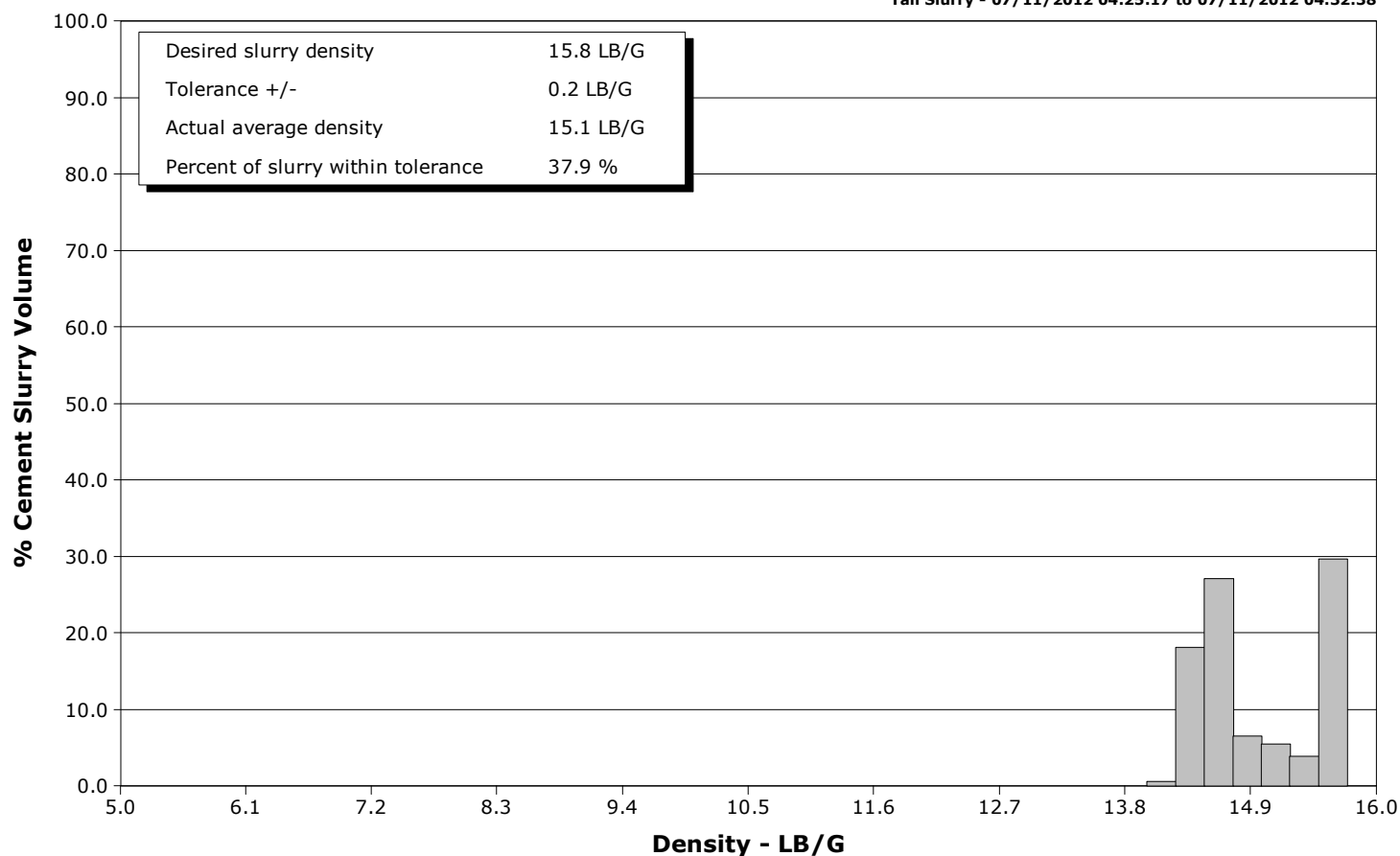
Well MCU-16-13B
Field MAMM CREEK
Engineer Dant Ryan
Country United States

Client ENCANA
SIR No. 809243
Job Type 9 5/8 SUFACE
Job Date 07-11-2012

Lead Slurry - 07/11/2012 03:57:28 to 07/11/2012 04:19:39



Tail Slurry - 07/11/2012 04:25:17 to 07/11/2012 04:32:38



				Customer ENCANA				Job Number 809243									
Well MCU-16-13B 16-13B				Location (legal) M16W				Schlumberger Location Grand Junction				Job Start Jul/11/2012					
Field MAMM CREEK			Formation Name/Type Shale			Deviation deg		Bit Size 12.3 in		Well MD 1563.0 ft		Well TVD 1563.0 ft					
County GARFIELD			State/Province Colorado			BHP psi		BHST 100 degF		BHCT 85 degF		Pore Press. Gradient lb/gal					
Well Master 0631269253			API/UWI														
Rig Name PATTERSON 308		Drilled For Gas		Service Via Land		Casing/Liner											
						Depth, ft		Size, in		Weight, lb/ft		Grade		Thread			
Offshore Zone		Well Class New		Well Type Development		40.0		16.0		65.0		N/A		N/A			
						1563.0		9.6		36.0		J55		8RD			
Drilling Fluid Type Bentonite			Max. Density lb/gal		Plastic Viscosity cP		Tubing/Drill Pipe										
						T/D		Depth, ft		Size, in		Weight, lb/ft		Grade		Thread	
Service Line Cementing		Job Type 9 5/8 SUFACE								0.0		0.0					
										0.0		0.0					
Max. Allowed Tub. Press psi		Max. Allowed Ann. Press psi		WH Connection Single Cement head		Perforations/Open Hole											
						Top, ft		Bottom, ft		shot/ft		No. of Shots		Total Interval ft			
						ft		ft									
						ft		ft						Diameter in			
						ft		ft									
						Treat Down Casing		Displacement 117.0 bbl		Packer Type		Packer Depth ft					
						Tubing Vol. bbl		Casing Vol. 121.0 bbl		Annular Vol. 90.0 bbl		Openhole Vol. 214.0 bbl					
Casing/Tubing Secured <input checked="" type="checkbox"/>		1 Hole Vol. Circulated prior to Cement <input checked="" type="checkbox"/>		Casing Tools				Squeeze Job									
Lift Pressure 773 psi				Shoe Type Float				Squeeze Type									
Pipe Rotated <input type="checkbox"/>		Pipe Reciprocated <input type="checkbox"/>		Shoe Depth 1563.0 ft				Tool Type									
No. Centralizers		Top Plugs 1		Bottom Plugs 0		Stage Tool Type				Tool Depth ft							
Cement Head Type Single				Stage Tool Depth ft				Tail Pipe Size in									
Job Scheduled For Jul/11/2012 00:00		Arrived on Location Jul/11/2012 00:00		Leave Location Jul/11/2012		Collar Type Float				Tail Pipe Depth ft							
						Collar Depth 1518.0 ft				Sqz. Total Vol. bbl							
Date	Time 24-hr clock	Treating Pressure PSI	Flow Rate B/M	Density LB/G	Volume BBL	Message											
07/11/2012	03:39:42	-2	0.0	8.44	0.0	Started Acquisition											
07/11/2012	03:39:43	-2	0.0	8.44	0.0	Rig Up Per STD 5											
07/11/2012	03:39:44	-2	0.0	8.44	0.0	011486 011497											
07/11/2012	03:39:46	-2	0.0	8.44	0.0	Hold Safety Meeting											
07/11/2012	03:40:46	-1	0.0	8.44	0.0	Fill Lines											
07/11/2012	03:40:49	-2	0.0	8.44	0.0	Pressure Test Lines											
07/11/2012	03:40:51	-1	0.0	8.44	0.0	Low 500 psi Test=Good											
07/11/2012	03:40:55	-2	0.0	8.44	0.0	Start Pumping Spacer											
07/11/2012	03:40:57	-2	0.0	8.44	0.0	Pump 20bbls of Water											
07/11/2012	03:41:22	-1	0.0	8.44	0.0												
07/11/2012	03:43:02	-1	0.0	8.44	0.0												
07/11/2012	03:44:42	54	2.1	8.43	1.5												
07/11/2012	03:46:22	407	0.0	8.43	2.2												
07/11/2012	03:48:02	610	0.0	8.43	2.2												
07/11/2012	03:49:42	3872	0.0	8.43	2.2												
07/11/2012	03:51:22	11	0.0	8.43	2.2												
07/11/2012	03:53:02	77	2.0	8.43	2.8												
07/11/2012	03:54:42	157	4.9	8.43	9.1												
07/11/2012	03:56:22	163	4.9	8.43	17.3												
07/11/2012	03:57:17	192	5.1	12.42	21.9	End Spacer											
07/11/2012	03:57:20	202	5.1	12.57	22.1	Start Cement Slurry											

Well			Field		Job Start		Customer		Job Number	
MCU-16-13B 16-13B			MAMM CREEK		Jul/11/2012		ENCANA		809243	
Date	Time 24-hr clock	Treating Pressure PSI	Flow Rate B/M	Density LB/G	Volume BBL	Message				
07/11/2012	03:57:31	264	5.1	12.61	23.1	Reset Total, Vol = 23.06 bbl				
07/11/2012	03:57:33	255	5.1	12.61	23.2	Pump 373sks (140bbls) 12.5 Lead				
07/11/2012	03:57:34	255	5.1	12.61	23.3	Yield of 2.11				
07/11/2012	03:58:02	225	5.1	12.65	25.7					
07/11/2012	03:58:18	381	4.9	12.58	27.0	Take Wet/Dry Samples				
07/11/2012	03:58:19	171	4.9	12.58	27.1	010646				
07/11/2012	03:58:47	241	5.1	12.51	29.4	Good Returns				
07/11/2012	03:59:42	313	6.5	12.51	35.2					
07/11/2012	04:01:22	288	6.5	12.49	46.1					
07/11/2012	04:03:02	296	6.5	12.42	56.9					
07/11/2012	04:04:42	293	6.5	12.44	67.8					
07/11/2012	04:06:18	327	6.5	12.47	78.3	Pressure Scale = 12.5				
07/11/2012	04:06:22	288	6.5	12.47	78.7					
07/11/2012	04:08:02	309	6.5	12.49	89.6					
07/11/2012	04:09:42	282	6.5	12.50	100.5					
07/11/2012	04:11:22	288	6.5	12.51	111.3					
07/11/2012	04:13:02	287	6.5	12.53	122.2					
07/11/2012	04:14:42	323	6.5	12.54	133.1					
07/11/2012	04:16:22	330	6.5	12.58	144.0					
07/11/2012	04:18:02	292	6.5	12.54	154.9					
07/11/2012	04:19:39	5	0.7	12.62	164.9	End Lead Slurry				
07/11/2012	04:19:41	12	0.3	12.62	164.9	Batch Up Tail				
07/11/2012	04:19:42	12	0.1	12.63	164.9					
07/11/2012	04:19:57	10	0.0	12.61	164.9	Reset Total, Vol = 141.83 bbl				
07/11/2012	04:21:22	5	0.0	12.59	164.9					
07/11/2012	04:23:02	7	0.0	12.53	164.9					
07/11/2012	04:24:42	11	0.0	12.55	164.9					
07/11/2012	04:25:17	125	2.6	15.78	166.2	Start Mixing Tail Slurry				
07/11/2012	04:25:21	130	2.6	15.76	166.3	Pump 149sks (31bbls) 15.8 Tail				
07/11/2012	04:25:22	130	2.6	15.74	166.4	Take Wet/Dry Samples				
07/11/2012	04:25:23	126	2.6	15.74	166.4	Good Returns				
07/11/2012	04:26:22	333	5.1	15.78	169.9					
07/11/2012	04:28:02	304	5.1	15.68	178.4					
07/11/2012	04:29:42	260	5.1	14.56	186.9					
07/11/2012	04:31:22	278	5.1	15.08	195.4					
07/11/2012	04:32:38	27	4.8	14.64	201.9	End Tail Slurry				
07/11/2012	04:32:39	27	3.8	14.64	201.9	End Cement Slurry				
07/11/2012	04:32:42	2	2.3	14.65	202.1	Drop Top Plug				
07/11/2012	04:32:44	9	0.7	14.64	202.2	Start Displacement				
07/11/2012	04:32:45	11	0.7	14.64	202.2	Displace 117bbls of Water				
07/11/2012	04:33:02	7	0.0	14.61	202.2					
07/11/2012	04:34:42	6	0.0	14.62	202.2					
07/11/2012	04:36:22	9	0.0	14.66	202.2					
07/11/2012	04:38:02	64	2.9	9.49	204.7					
07/11/2012	04:39:42	139	5.0	8.76	212.4					
07/11/2012	04:41:22	284	7.8	8.59	222.6					
07/11/2012	04:43:02	276	7.8	8.48	235.6					
07/11/2012	04:44:42	347	7.7	8.43	248.6					
07/11/2012	04:46:22	405	7.7	8.43	261.5					
07/11/2012	04:48:02	449	7.7	8.43	274.3					
07/11/2012	04:49:42	499	7.7	8.43	287.2					
07/11/2012	04:51:22	570	7.7	8.43	300.0					
07/11/2012	04:53:02	495	4.9	8.43	309.7					
07/11/2012	04:54:42	505	4.9	8.43	317.9					

Well			Field		Job Start	Customer		Job Number	
MCU-16-13B 16-13B			MAMM CREEK		Jul/11/2012	ENCANA		809243	
Date	Time 24-hr clock	Treating Pressure PSI	Flow Rate B/M	Density LB/G	Volume BBL	Message			
07/11/2012	04:58:02	718	2.5	8.43	326.3				
07/11/2012	04:58:13	1161	0.5	8.43	326.7	Bump Top Plug			
07/11/2012	04:58:15	1181	0.2	8.43	326.7	End Displacement			
07/11/2012	04:58:17	1184	0.0	8.43	326.7	Hold For 5 min			
07/11/2012	04:59:42	1170	0.0	8.43	326.7				
07/11/2012	05:01:22	1167	0.0	8.43	326.7				
07/11/2012	05:03:02	-2	0.0	8.43	326.7	1/2bbls Back			
07/11/2012	05:04:42	-2	0.0	8.43	326.7				
07/11/2012	05:06:22	54	0.0	8.43	326.7				

Post Job Summary

Average Pump Rates, bbl/min					Volume of Fluid Injected, bbl			
Slurry 5.4	N2	Mud	Maximum Rate 7.8		Total Slurry 326.7	Mud 0.0	Spacer 21.8	N2
Treating Pressure Summary, psi					Breakdown Fluid			
Maximum 3912	Final 179	Average 393	Bump Plug to 1175	Breakdown	Type	Volume bbl		Density lb/gal
Avg. N2 Percent %		Designed Slurry Volume 171.0 bbl		Displacement 124.6 bbl	Mix Water Temp 82 degF	Cement Circulated to Surface? <input checked="" type="checkbox"/>		Volume 55.0 bbl
						Washed Thru Perfs <input type="checkbox"/>		To ft
Customer or Authorized Representative ERASMO PARRAZ				Schlumberger Supervisor Dant Ryan			Circulation Lost <input type="checkbox"/>	Job Completed <input checked="" type="checkbox"/>
							-	-