

BILL BARRETT CORPORATION E-BILL

70 Ranch
70 Ranch 4-63-3-33H

Neighbors/M/-37

Post Job Summary **Cement Surface Casing**

Date Prepared: 10/26/2012
Version: 1

Service Supervisor: NIELSON, BRANDON

Submitted by: MCKAY, ADAM

HALLIBURTON

HALLIBURTON

Wellbore Geometry

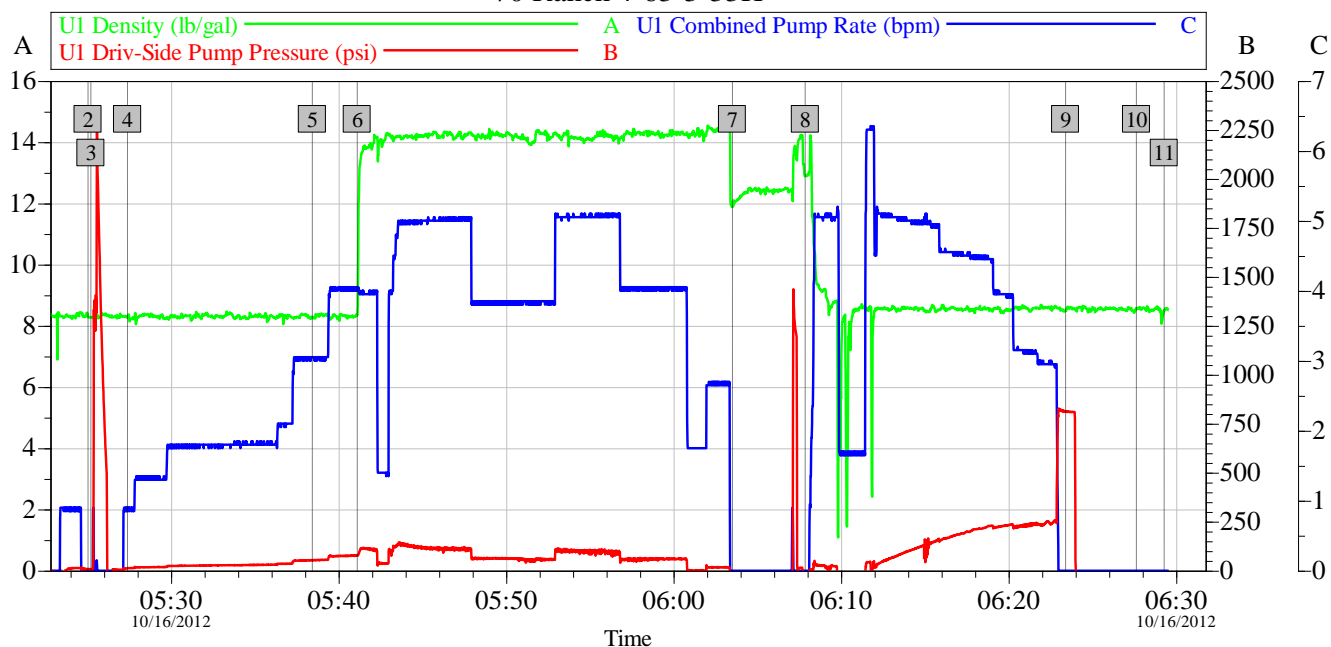
Job Tubulars					MD		TVD		Excess %	Shoe Joint Length ft
Type	Description	Size in	ID in	Wt lbm/ft	Top ft	Bottom ft	Top ft	Bottom ft		
Casing	9 5/8" Surface Casing	9.63	8.921	36.00	0.00	832.00	0.00	832.00		44.00
Open Hole Section	13 1/2" Open Hole		13.500		0.00	828.00	0.00	835.00		

Pumping Schedule

Stage /Plug #	Fluid #	Fluid Type	Fluid Name	Surface Density lbm/gal	Avg Rate bbl/min	Surface Volume	Downhole Volume
1	1	Spacer	Water Spacer	8.34	2.00	30.0 bbl	30.0 bbl
1	2	Cement Slurry	Surface Varicem 14.2#	14.20	4.00	380.0 sacks	380.0 sacks

Data Acquisition

Bill Barrett
70 Ranch 4-63-3-33H



Global Event Log

2 Start Job	05:25:02	3 Test Lines	05:25:12	4 Pump Spacer 1	05:27:24
5 Pump Spacer 2	05:38:26	6 Pump Cement	05:41:07	7 Shutdown	06:03:30
8 Pump Displacement	06:07:51	9 Bump Plug	06:23:24	10 End Job	06:27:37
11 Ending Job	06:29:17				

Customer:	Job Date: 16-Oct-2012	Sales Order #: 9888852
Well Description:	UWI:	

OptiCem v6.4.10
30-Oct-12 13:51

Service Supervisor Reports

Job Log

Date/Time	Chart #	Activity Code	Pump Rate	Cum Vol	Pump		Pressure (psig)	Comments
10/16/2012 05:25		Test Lines						TESTED LINES TO 2000 PSI NO VISIBLE LEAKS
10/16/2012 05:27		Pump Spacer 1	3	20			51.0	FRESH WATER
10/16/2012 05:38		Pump Spacer 2	4	10			75.0	FRESH WATER WITH 2 BOTTLES OF RED DYE
10/16/2012 05:41		Pump Cement	5	92			103.0	380 SKS SURFACE VARICEM MIXED @ 14.2 # WITH FRESH WATER
10/16/2012 06:03		Shutdown						
10/16/2012 06:07		Drop Top Plug						PLUG PRE LOADED WITNESSED BY COMPANY REP
10/16/2012 06:07		Pump Displacement	4.5	61.9			165.0	FRESH WATER CMT RETURNED TO SURFACE 40 BBL INTO DISPLACEMENT LEAVING US WITH 21 BBL TO SURFACE.
10/16/2012 06:23		Bump Plug	3				255.0	CALCULATED PRESSURE TO LAND WAS 251
10/16/2012 06:25		Check Floats						FLOATS HELD
10/16/2012 06:27		End Job						

HALLIBURTON

The Road to Excellence Starts with Safety

Sold To #: 343492	Ship To #: 2941447	Quote #:	Sales Order #: 9888852
Customer: BILL BARRETT CORPORATION E-BILL		Customer Rep: Schultz, Robert	
Well Name: 70 Ranch	Well #: 4-63-3-33H	API/UWI #: 05-123-35732	
Field: Wattenberg	City (SAP): KERSEY	County/Parish: Weld	State: Colorado
Contractor: Neighbors	Rig/Platform Name/Num: M-37		
Job Purpose: Cement Surface Casing			
Well Type: Development Well	Job Type: Cement Surface Casing		
Sales Person: AARON, WESLEY	Srvc Supervisor: NIELSON, BRANDON	MBU ID Emp #: 479703	

Job Personnel

HES Emp Name	Exp Hrs	Emp #	HES Emp Name	Exp Hrs	Emp #	HES Emp Name	Exp Hrs	Emp #
BOURGEOIS, KEVIN Paul	6.0	459092	CHISLUM, DENNIS	6.0	512130	NIELSON, BRANDON K	6.0	479703

Equipment

HES Unit #	Distance-1 way	HES Unit #	Distance-1 way	HES Unit #	Distance-1 way	HES Unit #	Distance-1 way
10824253C	45 mile	10857012C	45 mile	11527037	45 mile		

Job Hours

Date	On Location Hours	Operating Hours	Date	On Location Hours	Operating Hours	Date	On Location Hours	Operating Hours

TOTAL	Total is the sum of each column separately							
--------------	--	--	--	--	--	--	--	--

Job

Formation Name	Top	Bottom	Called Out	Date	Time	Time Zone
Formation Depth (MD)			On Location	15 - Oct - 2012	22:00	MST
Form Type	BHST		Job Started	16 - Oct - 2012	01:00	MST
Job depth MD	832. ft	Job Depth TVD	832. ft	Job Completed	16 - Oct - 2012	05:22
Water Depth		Wk Ht Above Floor	4. ft	Job Completed	16 - Oct - 2012	06:25
Perforation Depth (MD)	From	To	Departed Loc	16 - Oct - 2012	07:00	MST

Well Data

Description	New / Used	Max pressure psig	Size in	ID in	Weight lbm/ft	Thread	Grade	Top MD ft	Bottom MD ft	Top TVD ft	Bottom TVD ft
13 1/2" Open Hole				13.5				.	828.	.	835.
9 5/8" Surface Casing	New		9.625	8.921	36.			.	832.	.	832.

Tools and Accessories

Type	Size	Qty	Make	Depth	Type	Size	Qty	Make	Depth	Type	Size	Qty	Make
Guide Shoe					Packer					Top Plug			
Float Shoe					Bridge Plug					Bottom Plug			
Float Collar					Retainer					SSR plug set			
Insert Float										Plug Container			
Stage Tool										Centralizers			

Miscellaneous Materials

Gelling Agt	Conc	Surfactant	Conc	Acid Type	Qty	Conc	%
Treatment Fld	Conc	Inhibitor	Conc	Sand Type	Size	Qty	

Fluid Data

Stage/Plug #: 1

Fluid #	Stage Type	Fluid Name	Qty	Qty uom	Mixing Density lbm/gal	Yield ft3/sk	Mix Fluid Gal/sk	Rate bbl/min	Total Mix Fluid Gal/sk
---------	------------	------------	-----	---------	------------------------	--------------	------------------	--------------	------------------------

HALLIBURTON

1	Water Spacer		30.00	bbl	8.34	.0	.0	.0	
2	Surface Varicem 14.2#	VARICEM (TM) CEMENT (452009)	380.0	sacks	14.2	1.36	6.21		6.21
6.21 Gal		FRESH WATER							
Calculated Values		Pressures		Volumes					
Displacement		Shut In: Instant		Lost Returns		Cement Slurry		Pad	
Top Of Cement		5 Min		Cement Returns		Actual Displacement		Treatment	
Frac Gradient		15 Min		Spacers		Load and Breakdown		Total Job	
Rates									
Circulating		Mixing		Displacement		Avg. Job			
Cement Left In Pipe	Amount	44 ft	Reason	Shoe Joint					
Frac Ring # 1 @	ID		Frac ring # 2 @	ID		Frac Ring # 3 @	ID	Frac Ring # 4 @	ID
The Information Stated Herein Is Correct				Customer Representative Signature					