

The Road to Excellence Starts with Safety

Sold To #: 304535		Ship To #: 2954040		Quote #:		Sales Order #: 9846735	
Customer: PDC ENERGY EBUS				Customer Rep: ALVARADO, PHILIP			
Well Name: Wells Ranch		Well #: 31-34		API/UWI #:			
Field: WATTENBERG		City (SAP): KERSEY		County/Parish: Weld		State: Colorado	
Contractor: Basic		Rig/Platform Name/Num: 1548					
Job Purpose: Recement Service							
Well Type: Development Well				Job Type: Recement Service			
Sales Person: AARON, WESLEY		Srvc Supervisor: FANTASIA, JOSEPH		MBU ID Emp #: 485445			

Job Personnel							
HES Emp Name	Exp Hrs	Emp #	HES Emp Name	Exp Hrs	Emp #	HES Emp Name	Exp Hrs
BANUELOS, GUADALUPE	4.0	372277	BULINSKI, MATTHEW J	4.0	483865	EDWARDS, MICHAEL H	4.0
FANTASIA, JOSEPH Brandon	4.0	485445					

Equipment							
HES Unit #	Distance-1 way	HES Unit #	Distance-1 way	HES Unit #	Distance-1 way	HES Unit #	Distance-1 way
10972458	55 mile	11019275C	55 mile	11036301	55 mile	11142998	55 mile
11410470C	55 mile						

Job Hours							
Date	On Location Hours	Operating Hours	Date	On Location Hours	Operating Hours	Date	On Location Hours
9-26-2012	4	4					
TOTAL							

Total is the sum of each column separately

Job Times							
Formation Name	Formation Depth (MD)	Top	Bottom	Date	Time	Time Zone	
Form Type							
Job depth MD	3100. ft		Job Depth TVD	3100. ft			
Water Depth			Wk Ht Above Floor				
Perforation Depth (MD)	From		To				

Well Data							
Description	New / Used	Max pressure psig	Size in	ID in	Weight lbm/ft	Thread	Grade
Production Casing	Unknown		4.5	4.	11.6		
Tubing	Unknown		1.25	.824	2.4		

Tools and Accessories							
Type	Size	Qty	Make	Depth	Type	Size	Qty
Guide Shoe					Packer		
Float Shoe					Bridge Plug		
Float Collar					Retainer		
Insert Float							
Stage Tool							

Miscellaneous Materials							
Gelling Agt	Conc	Surfactant	Conc	Acid Type	Qty	Conc	%
Treatment Fld	Conc	Inhibitor	Conc	Sand Type	Size	Size	

Fluid Data							
Stage/Plug #:	Fluid Name	Qty	Qty uom	Mixing Density lbm/gal	Yield ft3/sk	Mix Fluid Gal/sk	Rate bbl/min
Fluid #	Stage Type						

Stage/Plug #: 1													
Fluid #	Stage Type	Fluid Name		Qty	Qty uom	Mixing Density lbm/gal	Yield ft ³ /sk	Mix Fluid Gal/sk	Rate bbl/min	Total Mix Fluid Gal/sk			
1	ClayWeb Water Spacer			10.00	bbl	8.33	.0	.0	2.0				
2	MUD FLUSH III	MUD FLUSH III - SBM (528788)		12.00	bbl	8.4	.0	.0	2.0				
3	ClayWeb Water Spacer			10.00	bbl	8.33	.0	.0	2.0				
59.525 gal/Mgal		CLA-WEB - TOTE (101985045)											
4	FILLCEM B1 11.8#	EXTENDACEM (TM) SYSTEM (452981)		485.0	sacks	11.8	2.05	11.24		11.24			
11.24 Gal		FRESH WATER											
Calculated Values		Pressures		Volumes									
Displacement	1.5	Shut In: Instant		Lost Returns	0	Cement Slurry	177	Pad					
Top Of Cement	0	5 Min		Cement Returns	8	Actual Displacement	1.5	Treatment					
Frac Gradient		15 Min		Spacers	22	Load and Breakdown		Total Job					
Rates													
Circulating	2	Mixing	2	Displacement	2	Avg. Job	2						
Cement Left In Pipe	Amount	0 ft	Reason	Shoe Joint									
Frac Ring # 1 @	ID	Frac ring # 2 @	ID	Frac Ring # 3 @	ID	Frac Ring # 4 @	ID						
The Information Stated Herein Is Correct				Customer Representative Signature									

Cementing Job Log

The Road to Excellence Starts with Safety

Sold To #: 304535		Ship To #: 2954040		Quote #:		Sales Order #: 9846735	
Customer: PDC ENERGY EBUS		Customer Rep: ALVARADO, PHILIP					
Well Name: Wells Ranch		Well #: 31-34		API/UWI #:			
Field: WATTENBERG		City (SAP): KERSEY		County/Parish: Weld		State: Colorado	
Legal Description:							
Lat:				Long:			
Contractor: Basic		Rig/Platform Name/Num: 1548					
Job Purpose: Recement Service		Ticket Amount:					
Well Type: Development Well		Job Type: Recement Service					
Sales Person: AARON, WESLEY		Src Supervisor: FANTASIA, JOSEPH		MBU ID Emp #:		485445	

Activity Description	Date/Time	Cht #	Rate bbl/min	Volume bbl	Pressure psig	Comments
Arrive at Location from Service Center	09/26/2012 12:06					
Assessment Of Location Safety Meeting	09/26/2012 12:15					
Start Job	09/26/2012 13:00					
Test Lines	09/26/2012 13:08				3000.0	PRESSURE TEST LINES TO 3000 PSI
Pump Spacer 1	09/26/2012 13:09	2		12	1520.0	PUMP 12 BLS MUD FLUSH MIXED USING SUPPLIED WATER
Pump Spacer 2	09/26/2012 13:16	2		10	1400.0	PUMP 10 BLS SUPPLIED WATER MIXED WITH CLAY WEB ADDITIVE
Pump Cement	09/26/2012 13:21	2		177	1956.0	485 SKS EXTENDACEM MIXED AT 11.8 PPG USING SUPPLIED WATER. APPROX 8 BLS CEMENT TO SURFACE.
Pump Displacement	09/26/2012 14:57		1.7	1.5	1950.0	PUMP 1.5 BLS WATER BEHIND.
End Job	09/26/2012 15:12					

Sold To #: 304535

Ship To #: 2954040

Quote #:

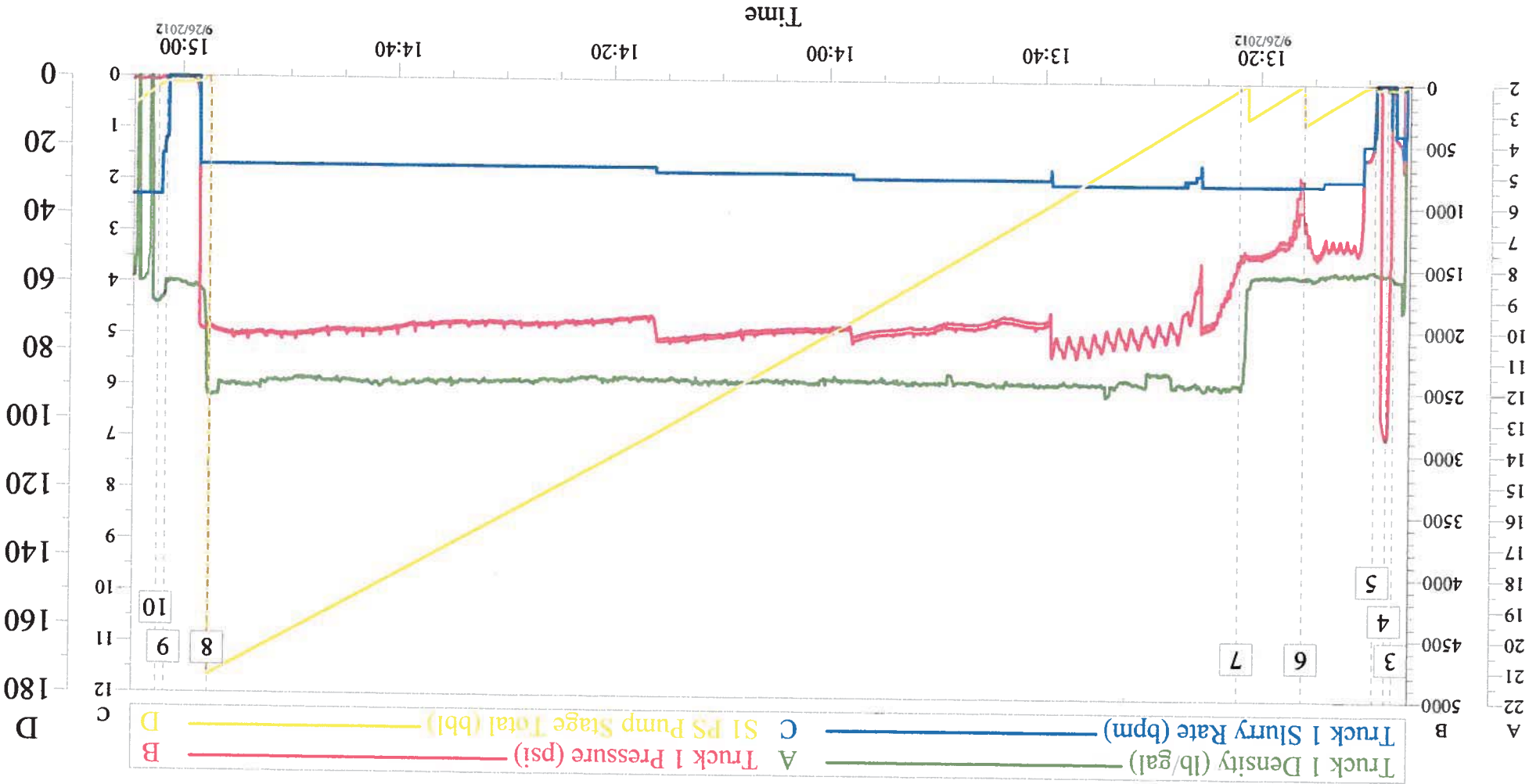
Sales Order #:

9846735

SUMMIT Version: 7.3.0040

Wednesday, September 26, 2012 03:17:00

PDC WELLS RANCH 31-34 RECEMENT



Global Event Log

1	Starting Job	12:41:44	2	Start Job	12:49:50	3	Start Job	13:07:41
4	Test Lines	13:08:19	5	Pump Spacer 1	13:09:26	6	Pump Spacer 2	13:16:01
7	Pump Lead Cement	13:21:58	8	Pump Displacement	14:57:27	9	End Job	15:01:30
10	Shutdown	15:02:15	11	Ending Job	15:09:48			